



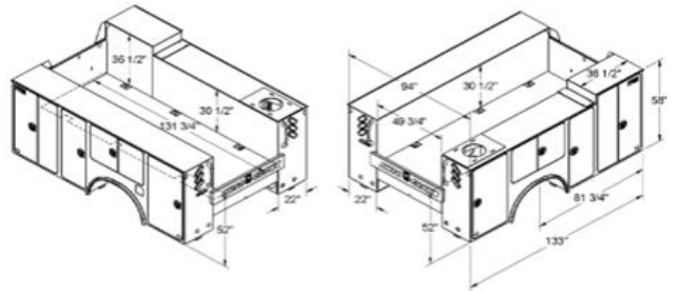
4707 North Mingo Road
Tulsa, OK 74117
voice: +1-918-438-2760
web: autocrane.com

Coming Soon!!!

Auto Crane Titan 38-HD Body & HC-8x NexStar 4 Service Crane

2023 Ram 5500

- 4x4
- 6.7L Cummins Turbo Diesel
- 6-Spd Automatic Transmission
- Regular cab
- 84CA / 168.5WB
- Rear back-up camera



Body Configuration

- Crane reinforcement up to 52,000 ft-lbs off the rear of the body and 43,000 ft-lbs off the sides
- Interlocking structural sub-frame
- 11' body length
- 10ga galvaneal steel (Patented) single panel side pack construction
- 22" deep side packs
- 50" Cargo floor width
- 58" right side front compartment, all other compartments 52" tall
- Six integrated tie downs in cargo floor (900lb rating each)
- Double panel galvaneal steel doors (10-ga outer, 14-ga inner panels)
- Internal stainless-steel door hinges
- Compression style T-handle door latches, keyed, rollers on latch rods (at contact points)
- Push on automotive style rubber door seals
- Gas door shock retainers
- Double panel pickup style slammable tail gate with paddle style latch
- Integral (formed) full length of body rain gutters
- Rear of body, heavy duty, grab handles, LH & RH
- Recessed bulkhead
- Titan Connect "Smart" Electrical



Driver Side Layout

LSF compartment (double doors)

- Toolbox (5) 3", (2) 5", (2) 7"
- 1 adjustable shelf

LSM compartment (single door)

- 3 fully adjustable shelves

LSH horizontal compartment (double doors)

- 1 fully adjustable shelf with dividers

LSR rear Compartment

- 3 fully adjustable shelves



4707 North Mingo Road
Tulsa, OK 74117
voice: +1-918-438-2760
web: autocrane.com

Passenger Side Layout

RSF compartment (double doors)

- Oxy-acet bottle holders (2)
- Divider panel
- 3 fully adjustable shelves
- 2" drop well
- Ceiling Mounted Oxy/Acet Gas Welding Hose Reel

RSM compartment (single door)

- 3 fully adjustable shelves

RSH horizontal compartment

- 1 fully adjustable shelf with dividers

RSR crane compartment

- 1 fixed shelf
- Air hose reel with rear wall exit
- Air F/L/R

Included Options:

- 24" work bench bumper
 - Includes integrated steps LH & RH, with galvanized steel open tread grating, for sure footing
 - Includes storage in bumper with latched doors LH & RH, includes inner latch protection
- 7-pin RV style trailer plug
- Receiver hitch
- Headache rack assembly
- LED marker and stop/tail/turn lights
- 4-LED work lights: 2-mounted rear of body facing back, 2-mounted on headache rack
- LED interior compartment lights
- LED Underbody Perimeter Safety Lighting
- Master locking system for driver and passenger side packs
- Body painted Titan Armor White – First Owner 15-Yr Rust-Thru/5-Yr Surface Rust Extended Warranty
- Bed liner:
 - Cargo walls and cargo floor
 - Tops of side packs
 - Front of body
 - Bumper
- 36-gallon hydraulic tank with sight glass
- ICC safety kit





4707 North Mingo Road
Tulsa, OK 74117
voice: +1-918-438-2760
web: autocrane.com

- Fire Extinguisher
- Backup safety alarm
- PTO/pump
- Spring reinforcement

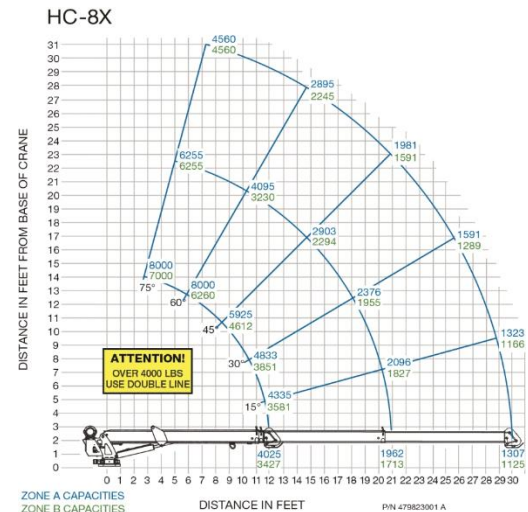


Power OnDemand

- Auto Crane patent-pending chassis engine/PTO automation system activation
- Upgrade to Titan Connect “Smart” electrical wiring system
- Turns off PTO/engine when crane or compressor are not in demand, automatically starts truck engine and ramps up PTO high idle when operator requires crane operation/compressor air required
- Saves fuel & maintenance costs, while reducing carbon emissions and extended chassis asset life

Crane Package:

- Auto Crane model HC-8X hydraulic crane with NexStar system
 - 8,000 lb. lift (max) off rear, 7,000 lb. lift (max) off sides
 - 52,000 ft-lb capacity
 - Full power extension to 30'
 - Power boom elevation, power hoist, and power rotation
 - - 14 to 75 degree boom elevation
 - Heavy duty swivel block with latch
 - 450-degree rotation
 - 55 ft./min. single line speed
 - 8 GPM @ 2,750 psi hydraulic requirement
 - 120 ft. of 3/8" 14,700 lbs. single line break strength aircraft quality cable
 - Automatic overload protection for hoist up, boom extend, and boom down
 - Crane painted Auto Crane White
 - NexStar Crane Management Systems include:
 - AutoDeploy & AutoStow functions
 - 12-hour continuous use rechargeable lithium-ion battery pack transmitter
 - 100% stability in all lift zones with Auto Crane Titan 38 body & outriggers
 - Independent proportional controls
 - Color LCD readout on controller
 - Pistol grip with thumb tip control of all functions
 - Angle detection of the boom and truck using two 3-axis sensors
- Transmitter recharging docking station
- 30 ft. optional tether cable & slap on AA battery back-up recharging pack
- Boom tip lights
- Crane boom support
- Hydraulic in/out & up/down outriggers with controls on rear of body

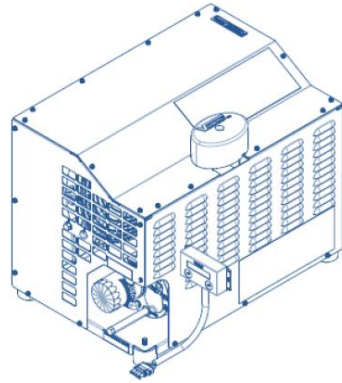




4707 North Mingo Road
Tulsa, OK 74117
voice: +1-918-438-2760
web: autocrane.com

Compressor:

- VMAC Predator H40 rotary screw compressor
- 40cfm @ 100psi (150psi max)
- 20-gallon in frame air receiver tank
- Air F/L/R
- Hose reel with 50' x 1/2" hose



PRICE: \$126,836.78

***** PRICE DOES NOT INCLUDE CAB/CHASSIS *****