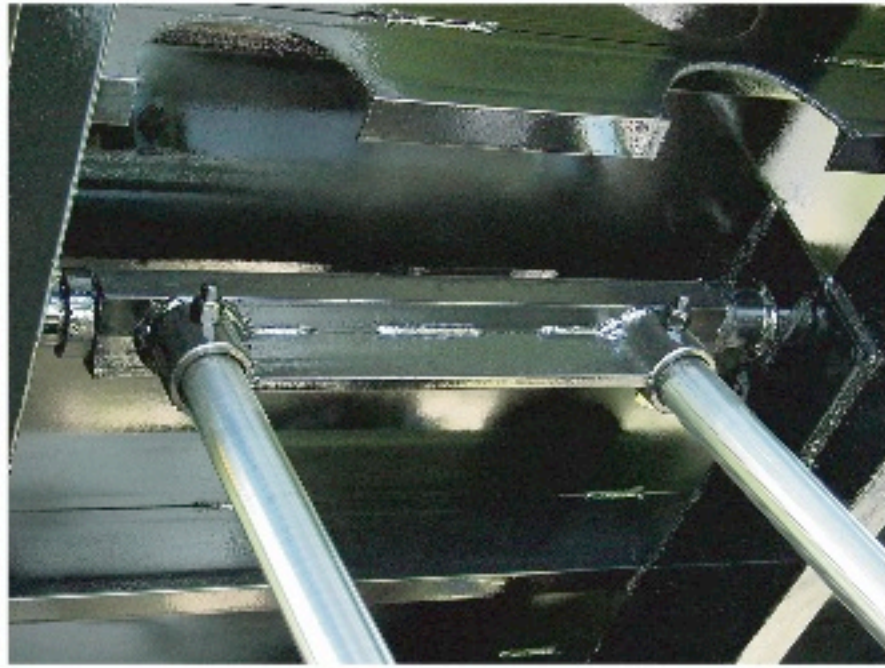


5530DM Hoists



The upper lift point of the 5530DM uses 2 1/4" pins that are welded to the longitudinals for extra strength.

This Subframe is built with A572 grade 50 high tensile steel & 4140 grade weldable castings

The 5530DM is double acting.



Shown are the 4140 heavy duty steel rear hinges with full length hinge pin. These hinges weld directly to the longitudinals.

Application Specifications

The 5530DM hoist is designed for trucks with 84" to 102" CA. This hoist is perfect for 10' to 14' bodies and has a dumping angle of 42 degrees and has a 1" mounting height. For the most durable combination, 6" body longitudinals are recommended. All Champion manufactured hoist are powder coat primed and are rigorously inspected by quality control to ensure top quality. The 5530DM hoist is equipped with two 5" cylinder with a 30" stroke and 2" chrome shaft.

5530DM is equivalent to class E

Available Components



The P22 direct gear pump is bi-rotational with side and rear ports for versatility, thus eliminating the drive line for added safety and dependability. This pump has an S.A.E. "B" 2-bolt flange. 15 GPM @ 1200 RPM



The SP4 valve with cable and lever control is used in conjunction with the P22 pump. This valve is easy to install and makes the hydraulic system double acting.



The 8.5 gallon box type reservoir is designed to be frame mounted inboard. It hangs out of the way and is equipped with a brass wire mesh suction strainer, oil level & temperature gauge.

Champion Hoist and Equipment™
200 Champion Drive
Dunn, NC 28334
(910) 897-4995 Fax (910) 897-7306

**POWDER
COATED
PRIMER**

5530DM Hoists

Experience that Matters

Dedicated to perfection and continuing to lead the industry, Champion Hoist and EquipmentTM has a low tolerance for defects and a strong desire for quality craftsmanship to ensure customer satisfaction. With over 35 years of excellence, Champion built hoists are well developed and industry proven. To ensure a long lasting durable product, all Champion equipment is shot blasted and powder coated black. We are a proud member of the National Truck Equipment Association.

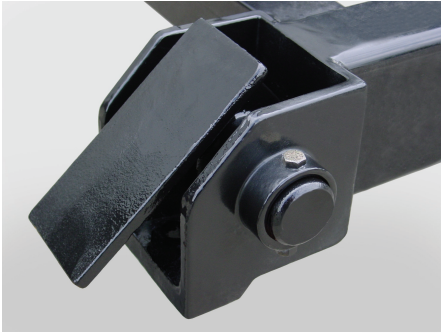


Champion built cylinders and hoists are designed to be double acting (power up and down). The 5530DM however is double acting. Our hoists are easy to install with as little truck and body modification as possible. To further ease the installation process, Champion hoists mount to the body and truck chassis using heavy duty grade 8 bolts with little or no welding needed.

With over 30 hoists offered,
Champion Hoist and EquipmentTM
is sure to have what you need.

Visit Champion Hoist and EquipmentTM
and all affiliated companies
on the world wide web.
www.championtruckhoist.com

PF-524 / PF-624



The hinges are cast from extra heavy duty 4140 grade steel to ensure durability. Adding to the ease of installation and durability, these hinges are welded directly to the body's main runners.

Payload range is governed by hinge location, load location, slide angle required to dump material, and includes average body weight.

This Subframe is built with A572 grade 50 high tensile steel & 4140 grade weldable castings

Champion reserves the right under its Product Improvement Program to modify construction and/or design and furnish equipment when so altered without reference to illustration and/or specifications shown herein. All specifications subject to change without notice.

Application Specifications

The PF524 is an extra stable pusher type hoist that features fast, easy mounting. The unit is ideal for one-ton and super-duty applications on trucks serving the smaller material handling needs of contractors, landscapers, golf courses and similar activities. Available with electric, direct mount or remote pump options. This hoist features a durable, smooth-working chrome piston rod, 5" / 6" cylinder bore with a 24" stroke. Capacity is 7.7 to 12.9 tons with an operating pressure of 2800 psi. This hoist dumps at 50 degrees and weighs less than 500 pounds. The PF524 and PF624 hoists are double acting (power up and down).

PF524DA is equivalent to class 30
PF624DA is equivalent to class 30

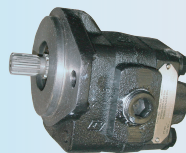
Available Components

The P21 direct mount gear pump is bi-rotational with side and rear ports for versatility, thus eliminating the drive line for added safety and dependability. This pump has an S.A.E. "B" 2-bolt flange and is used for lighter duty hoists. 10 GPM @ 1200 RPM

An electric pump is perfect for trucks without PTO provisions. Electric pumps are available in single acting and double acting (Power up or power Down) and are available for lighter duty hoists.

The 8.5 gallon box type reservoir is designed to be frame mounted. It hangs out of the way and is equipped with a brass wire mesh suction strainer, oil level & temperature gauge.

The pump directs flow to the tank valve combination that can be conveniently mounted to the frame. The control cable incorporates a safety button to prevent accidental operation. Available in 15 Quart and 21 Quart. Used with P21 and P22 pumps.



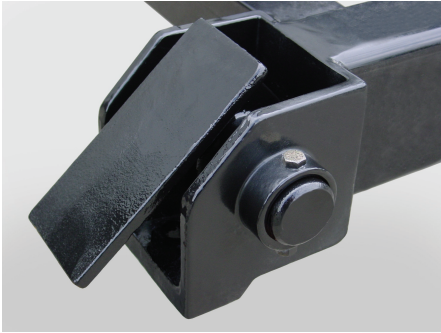
Champion Hoist and Equipment™

200 Champion Drive

Dunn, NC 28334

(910) 897-4995 Fax (910) 897-7306

PF-524 / PF-624



The hinges are cast from extra heavy duty 4140 grade steel to ensure durability. Adding to the ease of installation and durability, these hinges are welded directly to the body's main runners.

Payload range is governed by hinge location, load location, slide angle required to dump material, and includes average body weight.

This Subframe is built with A572 grade 50 high tensile steel & 4140 grade weldable castings

Champion reserves the right under its Product Improvement Program to modify construction and/or design and furnish equipment when so altered without reference to illustration and/or specifications shown herein. All specifications subject to change without notice.

Application Specifications

The PF524 is an extra stable pusher type hoist that features fast, easy mounting. The unit is ideal for one-ton and super-duty applications on trucks serving the smaller material handling needs of contractors, landscapers, golf courses and similar activities. Available with electric, direct mount or remote pump options. This hoist features a durable, smooth-working chrome piston rod, 5" / 6" cylinder bore with a 24" stroke. Capacity is 7.7 to 12.9 tons with an operating pressure of 2800 psi. This hoist dumps at 50 degrees and weighs less than 500 pounds. The PF524 and PF624 hoists are double acting (power up and down).

PF524DA is equivalent to class 30
PF624DA is equivalent to class 30

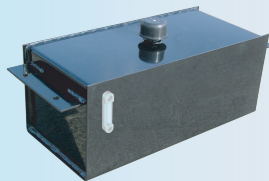
Available Components

The P21 direct mount gear pump is bi-rotational with side and rear ports for versatility, thus eliminating the drive line for added safety and dependability. This pump has an S.A.E. "B" 2-bolt flange and is used for lighter duty hoists. 10 GPM @ 1200 RPM

An electric pump is perfect for trucks without PTO provisions. Electric pumps are available in single acting and double acting (Power up or power Down) and are available for lighter duty hoists.

The 8.5 gallon box type reservoir is designed to be frame mounted. It hangs out of the way and is equipped with a brass wire mesh suction strainer, oil level & temperature gauge.

The pump directs flow to the tank valve combination that can be conveniently mounted to the frame. The control cable incorporates a safety button to prevent accidental operation. Available in 15 Quart and 21 Quart. Used with P21 and P22 pumps.



Champion Hoist and Equipment™

200 Champion Drive

Dunn, NC 28334

(910) 897-4995 Fax (910) 897-7306

**POWDER
COATED
PRIMER**



PF-524 / PF-624

Experience that Matters

Champion Hoist and Equipment™ has a low tolerance for defects and a strong desire for quality craftsmanship to ensure customer satisfaction. Dedicated to perfection and continuing to lead the industry with over 35 years of excellence, Champion built hoists are well developed and industry proven. Champion built equipment is shot blasted and powder coated black to ensure a long lasting durable product. We are a proud member of the National Truck Equipment Association.



Champion built cylinders and hoists are designed to be double acting (power up and down). Our hoists are easy to install with as little truck and body modification as possible. To further ease the installation process, Champion hoists mount to the body and truck chassis using heavy duty grade 8 bolts with little or no welding needed.

With over 30 hoists offered, Champion Hoist and Equipment™ is sure to have what you need.

Visit Champion Hoist and Equipment™ and all affiliated companies on the world wide web.
www.championtruckhoist.com

**POWDER
COATED
PRIMER**



PF-524 / PF-624

Experience that Matters

Champion Hoist and EquipmentTM has a low tolerance for defects and a strong desire for quality craftsmanship to ensure customer satisfaction. Dedicated to perfection and continuing to lead the industry with over 35 years of excellence, Champion built hoists are well developed and industry proven. Champion built equipment is shot blasted and powder coated black to ensure a long lasting durable product. We are a proud member of the National Truck Equipment Association.



Champion built cylinders and hoists are designed to be double acting (power up and down). Our hoists are easy to install with as little truck and body modification as possible. To further ease the installation process, Champion hoists mount to the body and truck chassis using heavy duty grade 8 bolts with little or no welding needed.

With over 30 hoists offered, Champion Hoist and EquipmentTM is sure to have what you need.

Visit Champion Hoist and EquipmentTM and all affiliated companies on the world wide web.
www.championtruckhoist.com

Galion®

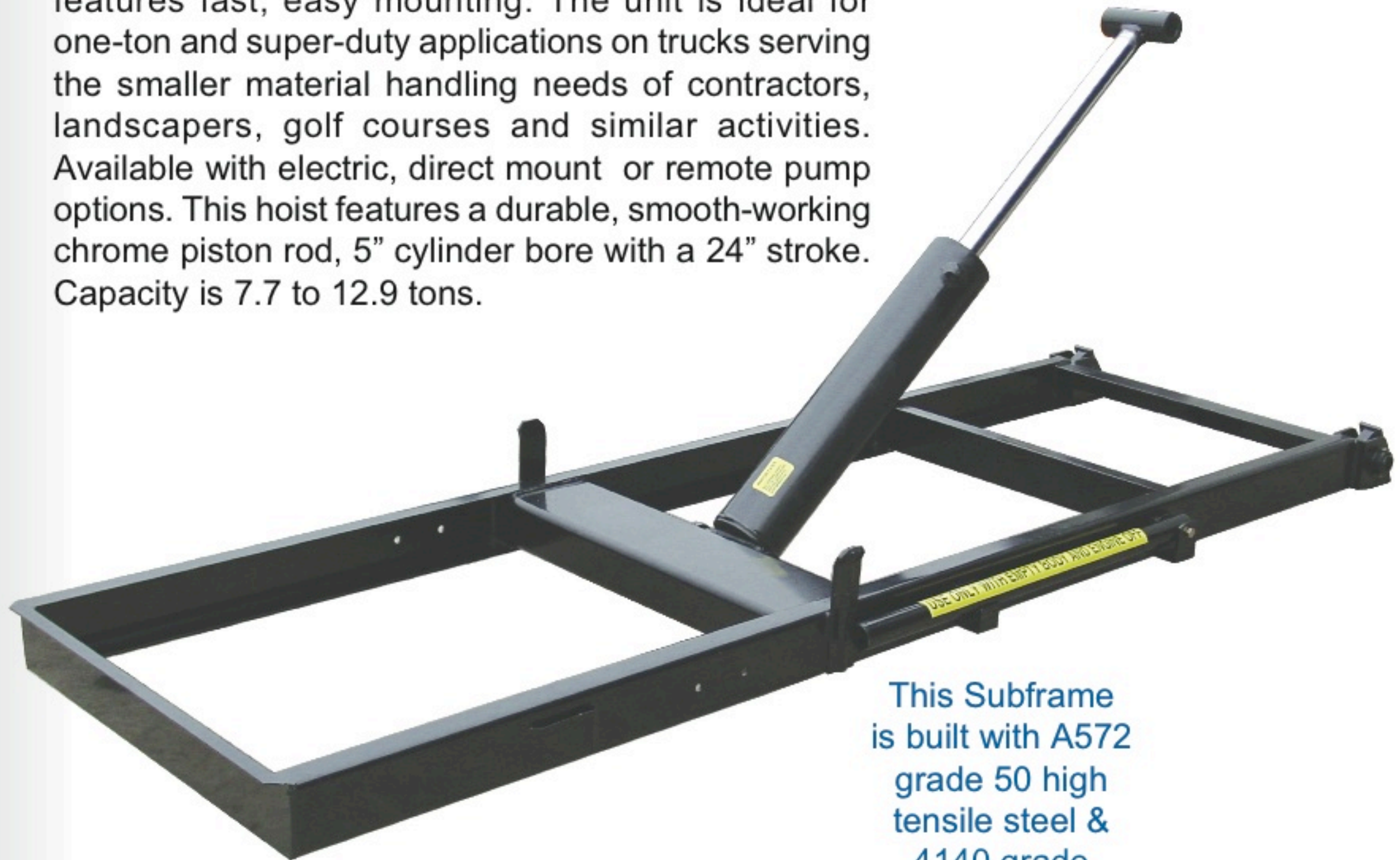
Underbody Hoist

*A continued tradition
since the early 1900's*



PF524DA, PF624DA

The PF524DA is an extra stable pusher type hoist that features fast, easy mounting. The unit is ideal for one-ton and super-duty applications on trucks serving the smaller material handling needs of contractors, landscapers, golf courses and similar activities. Available with electric, direct mount or remote pump options. This hoist features a durable, smooth-working chrome piston rod, 5" cylinder bore with a 24" stroke. Capacity is 7.7 to 12.9 tons.



This Subframe
is built with A572
grade 50 high
tensile steel &
4140 grade
weldable
castings

- Heavy duty cast hinge blocks
- One body prop
- Double acting hydraulics
- Fast, easy installation
- Heavy steel channel subframe
- Low maintenance
- Durable, practical



**POWDER
COATED
PRIMER**

Payload range is governed by hinge location, load location, slide angle required to dump material, and includes average body weight.

Visit Galion and all
affiliated companies
on the world wide web.
www.galiongodwin.com

Galion®

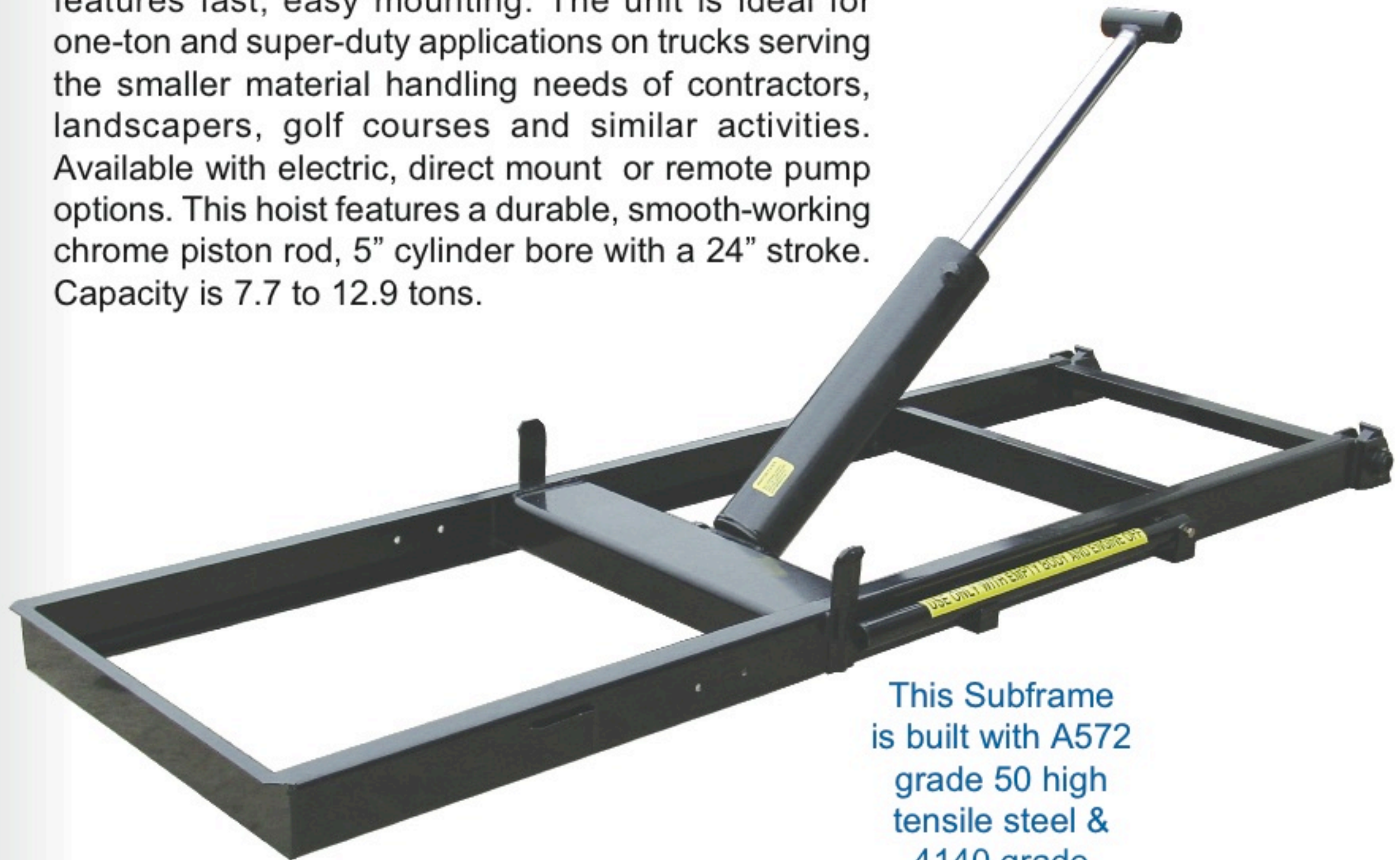
Underbody Hoist

*A continued tradition
since the early 1900's*



PF524DA, PF624DA

The PF524DA is an extra stable pusher type hoist that features fast, easy mounting. The unit is ideal for one-ton and super-duty applications on trucks serving the smaller material handling needs of contractors, landscapers, golf courses and similar activities. Available with electric, direct mount or remote pump options. This hoist features a durable, smooth-working chrome piston rod, 5" cylinder bore with a 24" stroke. Capacity is 7.7 to 12.9 tons.



This Subframe
is built with A572
grade 50 high
tensile steel &
4140 grade
weldable
castings

- Heavy duty cast hinge blocks
- One body prop
- Double acting hydraulics
- Fast, easy installation
- Heavy steel channel subframe
- Low maintenance
- Durable, practical



**POWDER
COATED
PRIMER**

Payload range is governed by hinge location, load location, slide angle required to dump material, and includes average body weight.

Visit Galion and all
affiliated companies
on the world wide web.
www.galiongodwin.com

PF524DA, PF624DA

Application Specifications

Hoist:

NTEA Class
 Max. Lifting Capacity*
 Subframe
 Pivot Shaft
 Mounting Height
 Standard Pivot
 Standard Dump Angle
 Weight**
 Oil Reservoir Capacity

PF524DA

30
 26,000 lbs.
 1/4" Steel Channel
 2"
 14-1/2"
 12"
 50 Degrees
 450 lbs.
 8.5 Gallons

PF624DA

equivalent to 30
 26,000 lbs.
 1/4" Steel Channel
 2"
 14-1/2"
 12"
 50 Degrees
 460 lbs.
 8.5 Gallons

Cylinder:

Bore
 Stroke
 Displacement
 Piston Rod Diameter
 Operating Pressure

5.00"
 24"
 512 cu. in.
 2"
 3500 PSI.

6.00"
 24"
 741 cu. in.
 2"
 3500 PSI.

*Governed by body length and pivot.

**Includes all mounting equipment

Available Components



The P21 direct mount gear pump is bi-rotational with side and rear ports for versatility, thus eliminating the drive line for added safety and dependability. This pump has an S.A.E. "B" 2-bolt flange and is used for lighter duty hoists. 10 GPM @ 1200 RPM



An electric pump is perfect for trucks without PTO provisions. Electric pumps are available in single acting and double acting (Power up or power Down) and are available for lighter duty hoists.



The 8.5 gallon box type reservoir is designed to be frame mounted. It hangs out of the way and is equipped with a brass wire mesh suction strainer, oil level & temperature gauge.



The pump directs flow to the tank valve combination that can be conveniently mounted to the frame. The control cable incorporates a safety button to prevent accidental operation. Available in 15 Quart and 21 Quart. Used with P21 and P22 pumps.



The hinges are cast from extra heavy duty 4140 grade steel to ensure durability. Adding to the ease of installation and durability, these hinges are welded directly to the body's main runners.

Galion-Godwin reserves the right under its Product Improvement Program to modify construction and/or design and furnish equipment when so altered without reference to illustration and/or specifications shown herein. All specifications subject to change without notice.

Galion-Godwin Truck Body Co. LLC.
 7415 Peabody-Kent Rd. Winesburg OH. P.O. Box 208
 (877) 450-4794 Fax (330) 359-5660

PF524DA, PF624DA

Application Specifications

Hoist:

NTEA Class
 Max. Lifting Capacity*
 Subframe
 Pivot Shaft
 Mounting Height
 Standard Pivot
 Standard Dump Angle
 Weight**
 Oil Reservoir Capacity

PF524DA

30
 26,000 lbs.
 1/4" Steel Channel
 2"
 14-1/2"
 12"
 50 Degrees
 450 lbs.
 8.5 Gallons

PF624DA

equivalent to 30
 26,000 lbs.
 1/4" Steel Channel
 2"
 14-1/2"
 12"
 50 Degrees
 460 lbs.
 8.5 Gallons

Cylinder:

Bore
 Stroke
 Displacement
 Piston Rod Diameter
 Operating Pressure

5.00"
 24"
 512 cu. in.
 2"
 3500 PSI.

6.00"
 24"
 741 cu. in.
 2"
 3500 PSI.

*Governed by body length and pivot.

**Includes all mounting equipment

Available Components



The P21 direct mount gear pump is bi-rotational with side and rear ports for versatility, thus eliminating the drive line for added safety and dependability. This pump has an S.A.E. "B" 2-bolt flange and is used for lighter duty hoists. 10 GPM @ 1200 RPM



An electric pump is perfect for trucks without PTO provisions. Electric pumps are available in single acting and double acting (Power up or power Down) and are available for lighter duty hoists.



The 8.5 gallon box type reservoir is designed to be frame mounted. It hangs out of the way and is equipped with a brass wire mesh suction strainer, oil level & temperature gauge.



The pump directs flow to the tank valve combination that can be conveniently mounted to the frame. The control cable incorporates a safety button to prevent accidental operation. Available in 15 Quart and 21 Quart. Used with P21 and P22 pumps.



The hinges are cast from extra heavy duty 4140 grade steel to ensure durability. Adding to the ease of installation and durability, these hinges are welded directly to the body's main runners.