

STAHL

2000 Series Owner's Manual

TABLE OF CONTENTS	1
SAFETY	2-4
OPERATION	5
MAINTENANCE	6-7
SPECIFICATIONS	8-10
TROUBLESHOOTING	11
MOUNTING INSTRUCTIONS - 2000E/2000R	12-15
MOUNTING INSTRUCTIONS – 2000H	16-18
PARTS-2000E CRANE ASSEMBLY	19-22
PARTS-2000R CRANE ASSEMBLY	23-26
PARTS-2000H CRANE ASSEMBLY	27-28
PARTS-2000E/2000R WINCH ASSEMBLY	29-30
PARTS-2000H HYDRAULICS SYSTEM	31-32
SCHEMATIC-2000E ELECTRICAL	33
SCHEMATIC-2000R ELECTRICAL	34
SCHEMATIC-2000H HYDRAULIC/ELECTRIC	35
WARRANTY	36

FOR THE LOCATION OF YOUR NEAREST DISTRIBUTOR CALL 330-264-7441

- It is YOUR responsibility to maintain and operate this crane safely -

The following words and symbols will be used in your owner's manual:

! DANGER ! Indicates immediate danger and that special precautions are necessary.

! CAUTION ! Warns against potential hazards or cautions against unsafe practices.

Your **STAHL** crane is designed to meet all applicable government safety standards. Warranty will be voided if the crane is misused due to:

- Overloading
- Abuse
- Lack of (or improper) maintenance
- Unauthorized modification

! CAUTION !

Operate your 2000 crane within the lifting capacities specified. Exceeding the lifting capacity for a given boom length can cause tipping or structural failure. Only the **STAHL** "New Machinery and Equipment" warranty shown on the last page of this manual is valid with this crane. No other warranty—verbal, written, or implied—is valid with this crane. Treat your **STAHL** crane with respect and service it regularly. These two things can add up to a safer working environment and longer equipment life.

! CAUTION !

Note locations of Danger, Caution, and Lift Capacity decals on the 2000 crane (refer figure 1, page 4). Read and understand each of these before attempting to operate the crane. If any of these labels are missing or cannot be read, contact your **STAHL** distributor for immediate replacement.

GENERAL SAFE OPERATING PRACTICES

ALWAYS inspect your crane daily, prior to use, for malfunctions, defects, or misuse.

ALWAYS keep the vehicle as level as possible while loading or unloading.

ALWAYS set the vehicle emergency brake before beginning crane operations.

ALWAYS keep the load as close to the ground as possible.

ALWAYS store the crane and hook when moving the truck.

ALWAYS store the controller securely to avoid unauthorized use of the crane.

NEVER swing a load that passes over people.

NEVER operate the crane within ten feet of a power line.

NEVER exceed the rated lifting capacity. Deduct the weight of any load handling equipment from rated capacity.

NEVER leave a load suspended in the air.

NEVER use the winch to drag a load into position before lifting.

NEVER operate the crane during an electrical storm or when high wind conditions exist.

NEVER side load the boom by dragging a load from the side.

NEVER try to service or repair the crane while the crane is operating.

NEVER place yourself between the load and truck or other fixed object.

NEVER move the truck while operating the crane or with a load on the crane.

SAFETY CHECKLIST

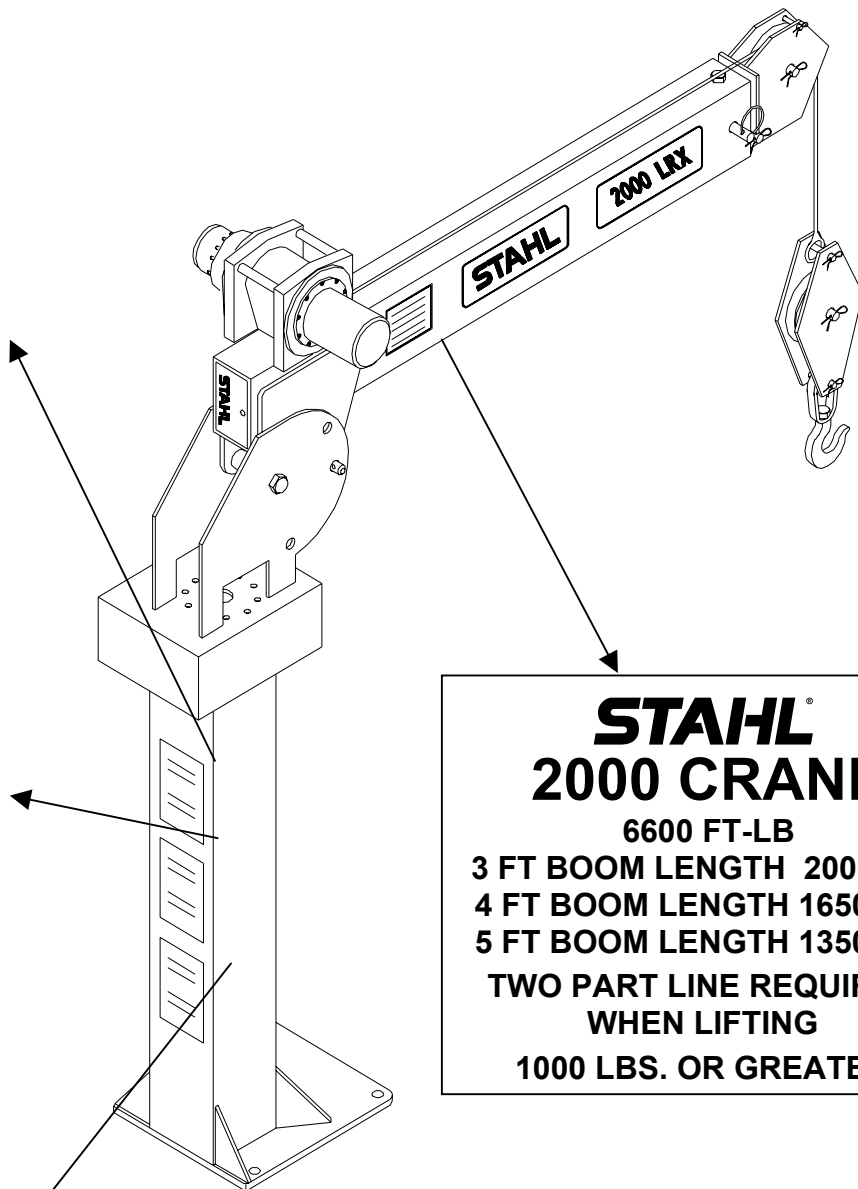
STRUCTURAL SOUNDNESS: Inspect the unit for damaged members and loose fasteners.

CONTROLS: Make a short test for proper control and operation of all functions.

REPAIRS: Fix all problems before using your crane.

DECAL PLACEMENT

Note locations of the DANGER, CAUTION, and LIFT CAPACITY decals on the **STAHL** 2000 crane. Read and understand each of these decals before attempting to operate your crane. If any decals are missing or cannot be read, contact your **STAHL** distributor for immediate replacement.



STAHL®
2000 CRANE
 6600 FT-LB
 3 FT BOOM LENGTH 2000 LBS
 4 FT BOOM LENGTH 1650 LBS
 5 FT BOOM LENGTH 1350 LBS
 TWO PART LINE REQUIRED
 WHEN LIFTING
 1000 LBS. OR GREATER

The 2000 crane is designed to provide excellent service if operated within the maximum allowable load specifications stated on the unit's load indication label located on either side of the boom (refer figure 1, page 4). The load information should be studied before operating the crane. Exceeding the stated load limit can cause tipping or structural failure. You should familiarize yourself with proper operation procedures to avoid overloading the crane.

The 2000 crane is relatively simple to operate. Prior to field use, you should familiarize yourself with the controls and how the unit reacts to the controls. Practice operations should be performed with a light test weight progressing to a heavier test weight.

LIFTING OVER 1,000 POUNDS

A "two-part" line must be used whenever the load is **1000 pounds** or greater. In order to "two-part" the line:

- Connect the winch hook to the hole on the bottom of the manually extendible boom section.
- Insert cable through the snatch block by removing the cotter pin and disassembling.
- Reassemble the snatch block. Be sure to reinsert the cotter pin in the snatch block.

You should also use a "two-part" line for loads under 1000 pounds if you want to slow down the cable line speed.

LOAD LIFTING

It must be understood that all load ratings are formulated on 85% of tipping. Tipping is defined as a tire breaking contact with the ground. Further, all load ratings are dependent upon compliance with the following:

- The unit has been correctly installed in accordance with chassis requirements and truck body manufacturer's specifications.
- The intended operation is carried out on a level, solid surface.

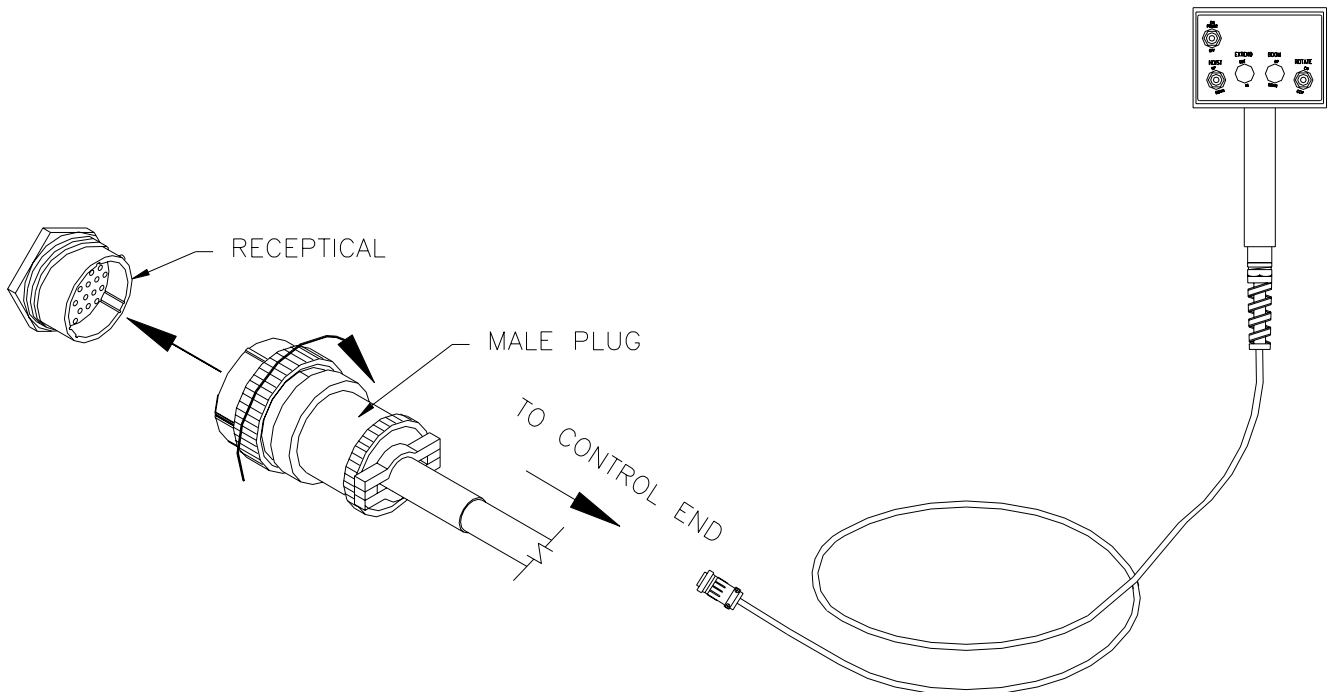
TASK PERFORMANCE

1. Position the 2000 crane as close to the job as possible on a firm, dry, and level surface. Avoid overhead obstruction on the work side of the unit.
2. Set the parking brake.
3. If your truck has outriggers, extend and lower the outriggers until firm ground contact is made. On soft ground, use bearing pads to prevent sinking or tipping.
4. Run the winch line out before extending the boom.
5. Make sure the connection to the load is secure and will not come loose when lifting the load.

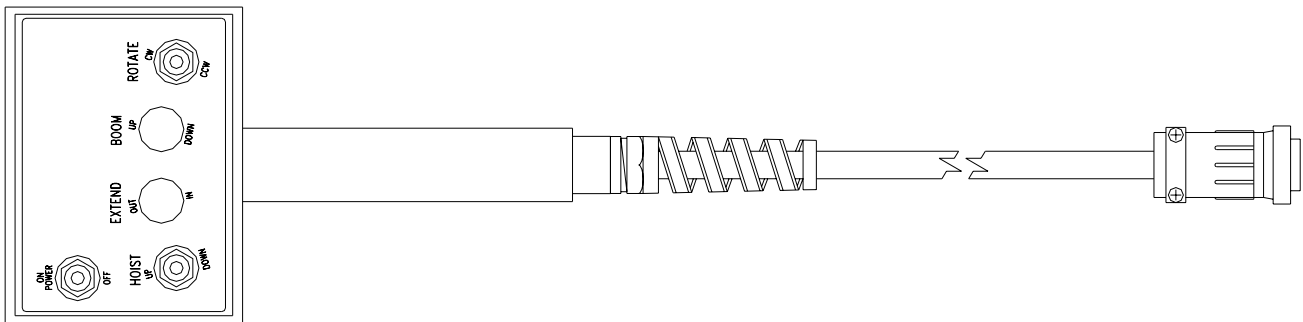
REMOTE CONTROL (2000R)

The crane remote control plugs into a receptacle. The blue line on the male plug on the remote control must line up with the flat spot on the receptacle at the base of the crane. Push the male plug onto the receptacle while turning the serrated portion of the male plug clockwise. Continue turning until the pin on the receptacle can be seen through the hole in the male plug and a "click" is felt.

There are three switches on the remote control. Each is labeled as to the function and direction. For example: To activate the winch, push up on the switch to "winch up"; push down on the switch to "winch down".



ALIGN GROOVES AND FLATS WHEN CONNECTING PLUG



Proper maintenance on a regular schedule is essential to keep the unit operating at peak efficiency.

LUBRICATION

Maintaining the proper lubrication schedule will vary with climate conditions and the amount of usage the unit receives. The lubrication chart below is intended to serve for a normal workload and moderate weather variance. Periods of heavy use shorten service intervals.

ITEM	WHERE	INTERVAL	LUBRICATION PRODUCT
Winch Cable	Surface	6 Months	Light Oil
Pulley Block Pin	Grease Fitting	6 Months	Chevron Moly Grease #2
Sheave Pin	Grease Fitting	6 Months	Chevron Moly Grease #2
Boom Pivot Pin	Grease Fitting	6 Months	Chevron Moly Grease #2
Winch (2000E & 2000R)	Permanent Sealed	None	N/A
Winch (2000H)	Top of Winch	1 Month	Shell Spirax Gear Oil 85W/140
Slewing Ring	Grease Fitting	1 Month	Chevron Moly Grease #2
Worm Drive/Gear Mesh (2000R)	Directly on Gears	1 Month	Mobiltac "c", Shell Cardium EP Silver Streak 200, Mollube Alloy 936

FEATURES

SPECIFICATIONS	2000E	2000R	2000H
Crane Rating	6600 ft-lbs		
Extension	Manual to 6'		
Lifting Height Above Base	84 "	86"	84"
Weight	240 lbs.	260 lbs	275 lbs.
Length	26.00"		
Width	14.00"		
Height	50.00"	51.00"	50.00"
Base Dimensions	12" x 12"		
Remote Control	Lightweight remote with 10' cable.	Lightweight remote with 25' cable.	Lightweight remote with 12' cable.
Rotation System	Manual with Manual Hand Break	360° continuous electric on turntable bearing with worm drive	Manual rotation 370° non-continuous with Manual Hand Break
Rotation Speed	Not Applicable	1 RPM	Not Applicable
Winch Cable	50' of 3/16" aircraft cable, with latch hook traveling block and down haul weight		
Winch Speed\Current Draw	18.5' per minute (single line) - 20 amps NO LOAD 12.7' per minute (single line) – 63 amps 1000 LBS. 3.6' per minute (two part line) – 55 amps 2000 LBS.	89' per minute (bare drum) 121' per minute (full drum) (at full oil volume)	
Winch Hydraulic Requirements	Not Applicable		Flow rate = 3 to 6 gpm Pressure = 1700 psi max
Chassis Requirement	Minimum 8000 GVWR Chassis Required		

BOOM REACH/LIFTING CAPACITY

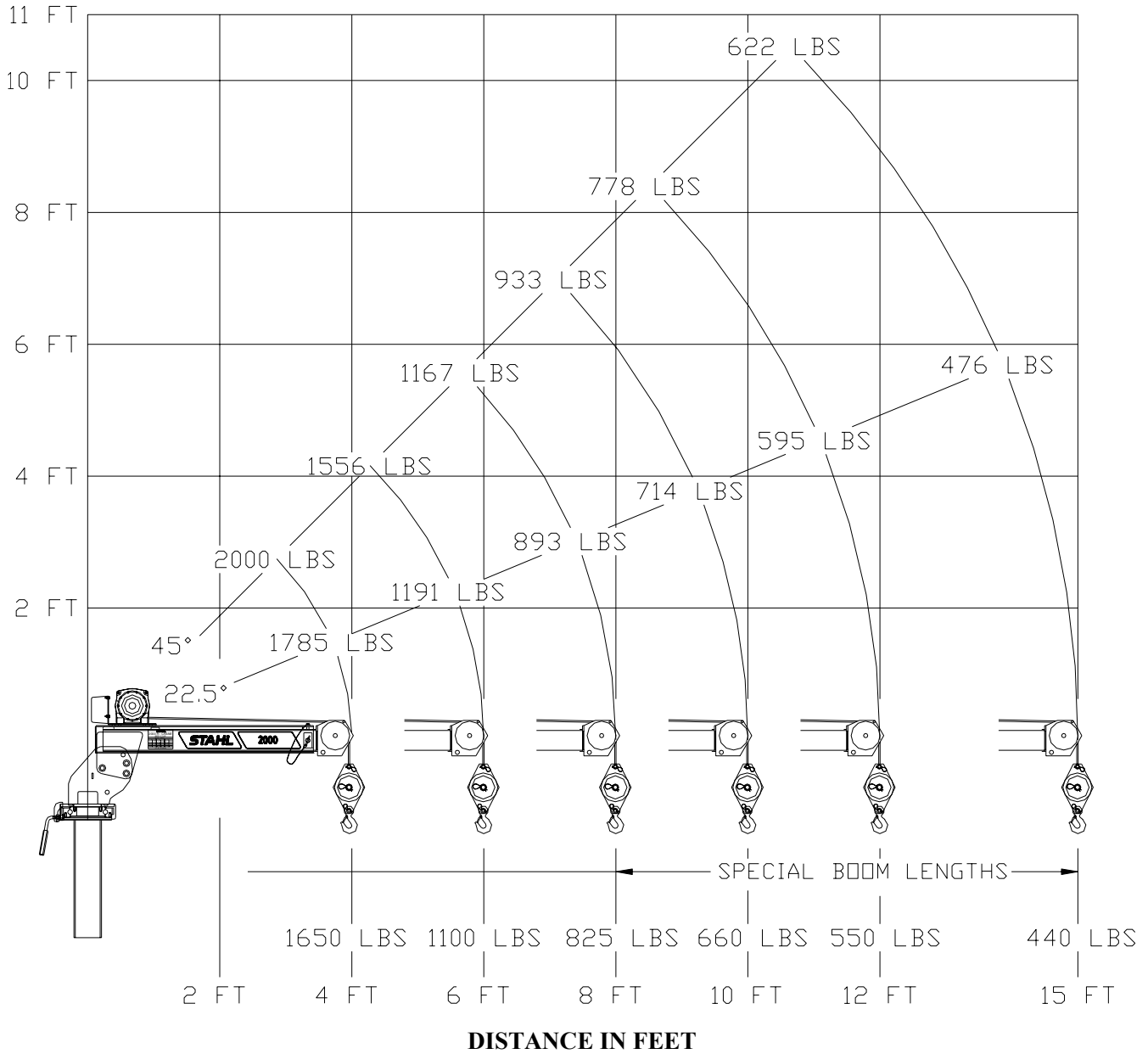
BOOM ANGLE	4FT.	5FT.	6FT.
0°	1650 lbs.	1350 lbs	1100 lbs
21°	1785 lbs.	1425 lbs.	1190 lbs
45°	2000 lbs.	1866 lbs	1555 lbs

!CAUTION! TWO-PART LINE REQUIRED FOR LOADS OVER 1000 LBS.

NOTE:

- 2000 LB CRANES THAT ARE COMPARTMENT MOUNT OR BOOM LENGTHS LONGER THAN 3 TO 5 FEET WILL NOT FOLD DOWN UPON THEMSELVES FOR STORAGE.
- BOOM LENGTH IS MEASURED FROM CENTER OF ROTATION TO CENTER OF SNATCH BLOCK. SEE LIFTING CAPACITY CHART ON NEXT PAGE.

**LIFTING CAPACITIES
MEASURED IN LBS
CRANE RATING 6600 FT-LBS**



OPTIONAL OUTRIGGERS

The addition of outriggers will provide extra stability for your truck when lifting loads.

A manual jackleg outrigger is offered as an option for the 2000 **STAHL** crane. Before installing the outrigger, the area where it is to be mounted must be modified and reinforced.

- Reinforce the body end panel and compartment bottom using ¼ inch plate steel.
- The reinforcement should be installed inside the compartment by welding 2 inches long on 6-inch centers.
- Weld 3 inch x 3-3/16 inch tubing to the compartment bottom as shown.
- The outrigger will slide into the 3 inch x 3 inch tubing and the 1/4-inch reinforcement will distribute the load and prevent collapse of the compartment bottom.

To operate the outrigger, insert the tube into the mounting socket on the body. Lower the outrigger by holding the handle and turning the base clockwise. The outrigger must be lowered until firm ground contact is made. On soft ground, use bearing pads to prevent sinking.

To raise the outrigger, turn the base counter clockwise.

! CAUTION !

To prevent damage to the truck chassis, service body, and/or outrigger, NEVER move the truck with the outrigger in place.

! CAUTION !

To prevent possible tipping of the truck, NEVER raise or remove the outrigger when the crane is in operation or holding a load.

SYMPTOM	PROBABLE CAUSE
Winch fails to respond to controls	Short circuit in remote control Broken wire in remote control Crane not grounded to truck Remote control not connected properly Circuit breakers tripped Dead Battery Low hydraulic fluid (2000H only) Faulty hydraulic pump (2000H only) Valve solenoid malfunctioning (2000H only) Bad ground on control valves (2000H only)
Slow down of winch line speed	Low battery charge Improper battery capacity Low hydraulic fluid (2000H only) Flow rate from pump too low (2000H only) Clogged filter/strainer (2000H only)
Winch will not lift load	Overload condition Low battery charge Improper capacity battery Restriction in hydraulic line (2000H only) Relief valve set too low (2000H only) Overload condition (2000H only) Pump losing prime (2000H only) Filter clogged (2000H only)
Cable mis-wrap	Loose cable being wound on drum
Unusual noise during operation	Load is excessive Cavitation due to low hydraulic oil (2000H only) Suction line filter is clogged (2000H only) Relief valve is set too low (2000H only) Relief valve defective (2000H only) Air in the lines (2000H only)
Winch motor runs but fails to wind cable	Gear train is damaged
Crane will not rotate	Bushings worn 12 Volt electric motor defective (2000R only) Rotation drive gear out of alignment (2000R only)

! CAUTION !

Improperly mounted cranes can injure people or damage property. These instructions describe installation of a **STAHL** crane on a typical **STAHL** service body. Contact the dealer for other service body/truck chassis combinations.

! CAUTION !

The truck chassis must be capable of safely supporting the entire chassis, body, crane, other equipment and the maximum capacity of the crane - 2000 pounds.

The 2000 crane must be installed on a truck chassis with a GVWR of at least 2000 pounds greater than the curb weight of the complete vehicle. The curb weight is the total weight of the chassis, body, crane, and other equipment.

The battery should have a minimum capacity of 550 cold cranking amps (CCA) with a 60-amp alternator. It is recommended that an auxiliary battery with a battery isolator system be used to prevent drainage and prolong battery life.

! CAUTION !

Never attach, change, or use unauthorized components on your **STAHL** crane. This could result in failure of the crane (and possible injuries) and voids any warranty or liability.

! CAUTION !**MOST SERVICE BODIES ARE NOT STRONG ENOUGH TO MOUNT A CRANE!**

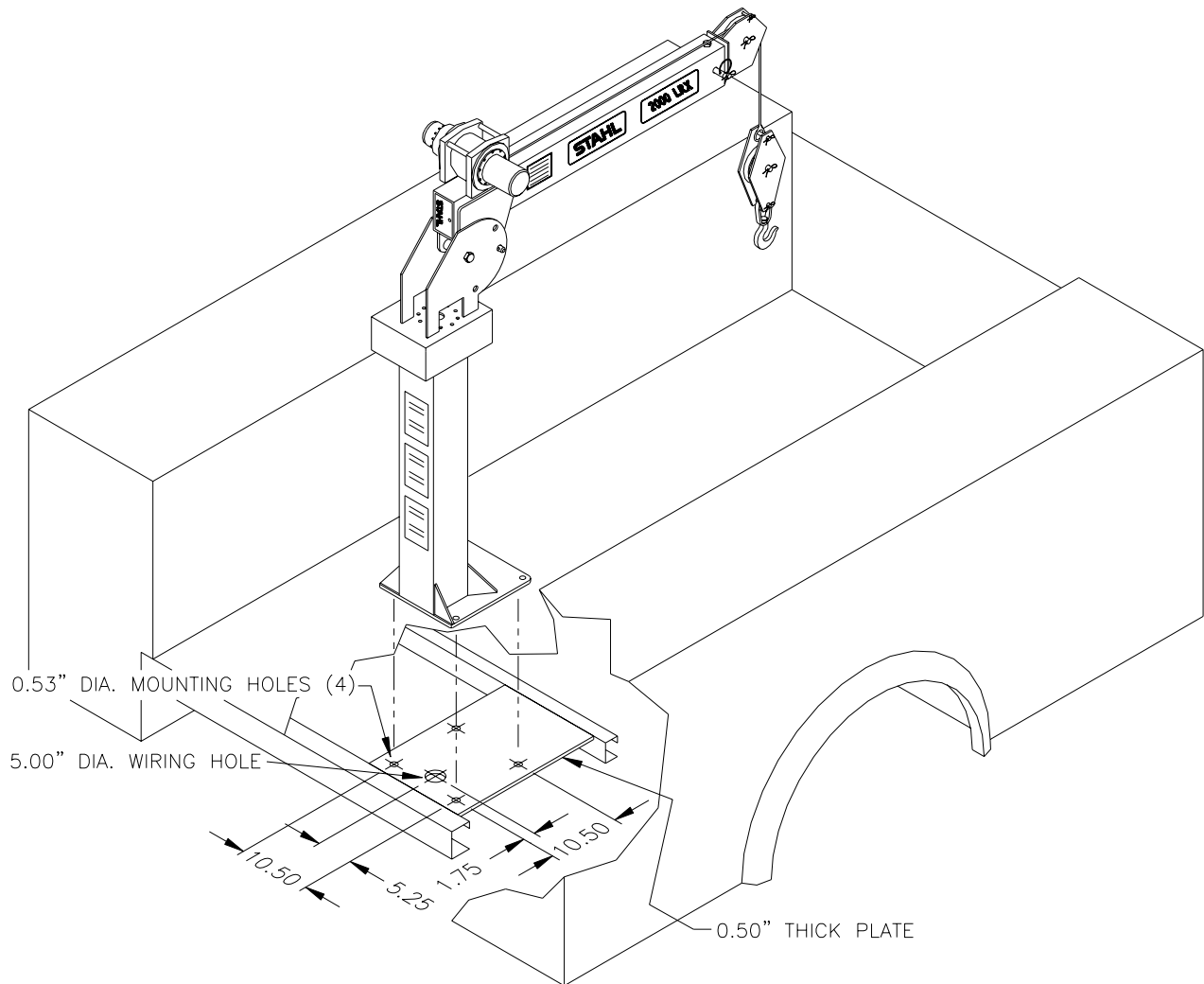
You must reinforce the compartment and floor before you mount the crane. Get help from the truck dealer or distributor if the **STAHL** 2000 crane is installed on a non-**STAHL** body, in another body/chassis combination or in a different location. It is recommended that a **STAHL** crane body and outriggers be used with the 2000 crane. Consult the distributor for the proper body required for your application.

! CAUTION !

Never attach, change, or use unauthorized components on your **STAHL** crane. This could result in failure of the crane (and possible injuries) and voids any warranty or liability.

2000E & 2000R MOUNTING INSTRUCTIONS

1. Most floors in truck bodies are not strong enough to mount a crane. You must use a 0.50" thick steel plate to reinforce the floor **before** you mount the crane (fig. 4). The reinforcing plate must be welded to the rear chassis cross member, intermediate cross member and the longitudinal support. For best results, weld 2 inches long on 6-inch centers.
2. Layout the mounting holes on the mounting surface (refer to figure 4). Drill four (4) 0.531" diameter holes and flame cut or drill the 1.50" diameter-wiring hole.
3. Lift the crane into position. Make sure the power leads are fed through the wiring hole.
4. Bolt the 2000 crane to the mounting surface with four (4) 0.50" grade eight bolts and four (4) grade eight lock nuts. Torque the 0.50" bolts to 75 foot-pounds. Use of other than 0.50" grade eight bolts and lock nuts may result in the crane breaking loose from the mounting surface when in use.



2000E & 2000R MOUNTING INSTRUCTIONS**! CAUTION !****-DISCONNECT NEGATIVE BATTERY CABLE BEFORE PROCEEDING-**

5. Pull the two-wire power cable through the access hole under the crane mounting. Bolt the black wire to the truck frame. Mount a 150-amp circuit breaker in a convenient location near the battery. Cut the excess from the red cable and connect it to one terminal on the circuit breaker. Connect the remaining red wire to the other terminal on the circuit breaker. Connect the other end of the red wire to the positive terminal on the battery.
6. Reconnect the negative battery cable. The 2000 crane is self-grounding and does not require an additional ground cable.
7. **NOTE:** if a compartment mount crane is being used a minimum of a 2000# crane reinforcement must be installed in the compartment under the crane.

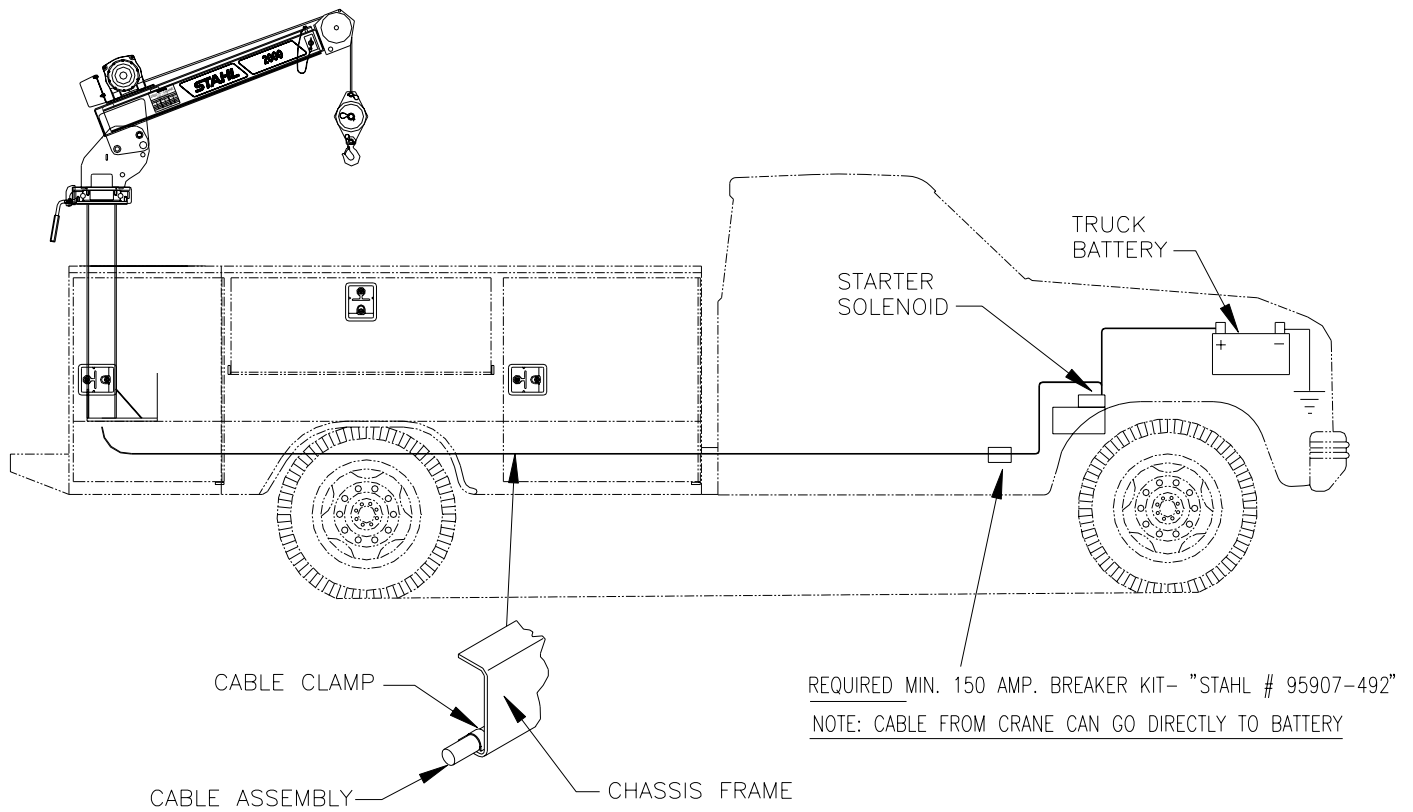
! CAUTION !

FAILURE TO PUT THE CIRCUIT BREAKER IN PLACE COULD SERIOUSLY DAMAGE THE WINCH MOTOR. A CIRCUIT BREAKER ALSO PROTECTS AGAINST ELECTRICAL SHORTS AND FIRES.

! CAUTION !

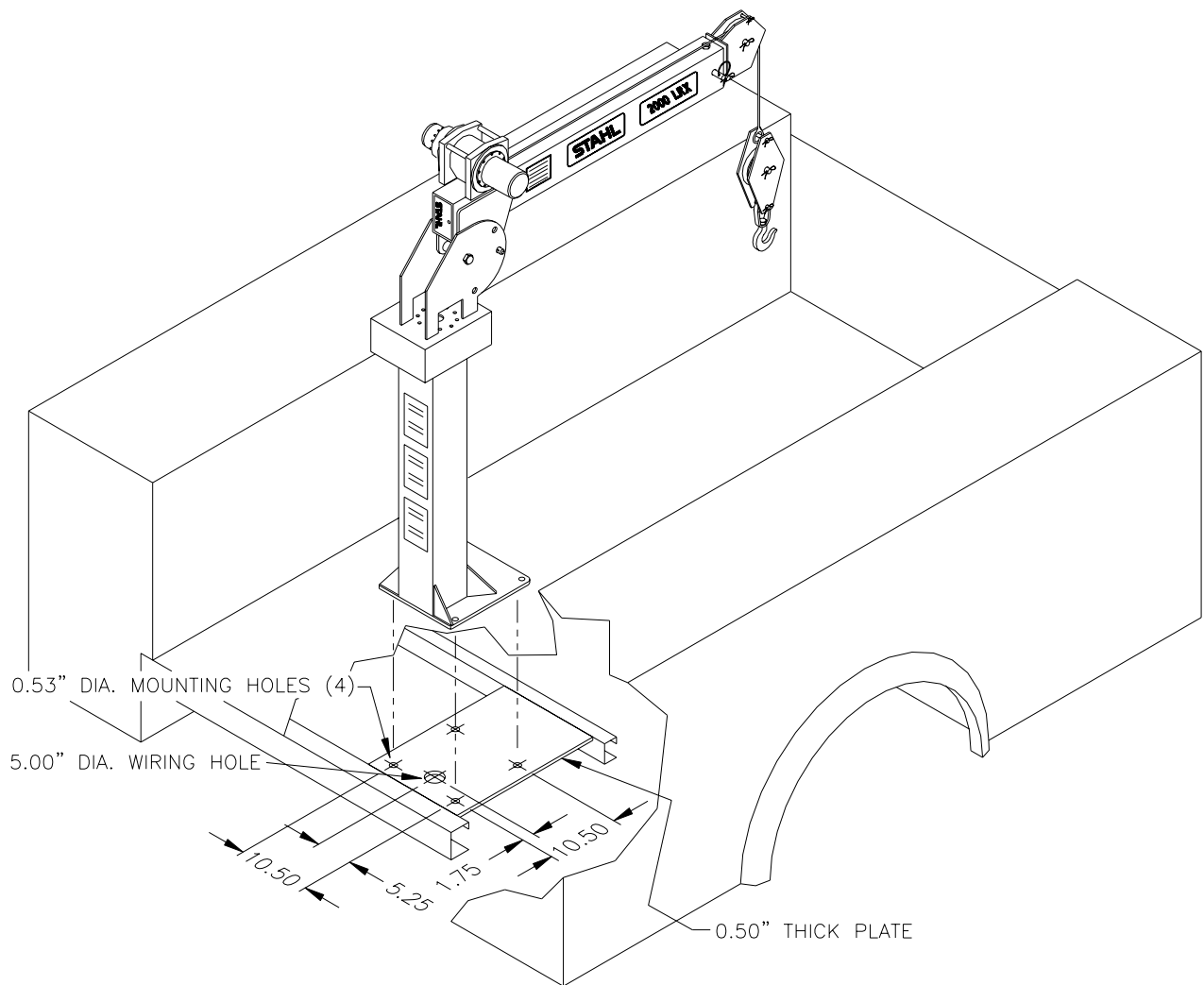
IF THE POWER WIRE IS ROUTED SO THAT IT PASSES THROUGH ANY BODY OR CHASSIS SHEET METAL, A GROMMET MUST BE USED TO PROTECT WIRES FROM BEING CUT. IF THE POWER WIRE COMES INTO CONTACT WITH A GROUNDED SURFACE, A DEAD SHORT WILL OCCUR POSSIBLY CAUSING DAMAGE TO THE CRANE, VEHICLE BATTERY OR ELECTRICAL SYSTEM.

2000E & 2000R MOUNTING INSTRUCTIONS



2000H MOUNTING INSTRUCTIONS

5. Most floors in truck bodies are not strong enough to mount a crane. You must use a 0.50" thick steel plate to reinforce the floor **before** you mount the crane. The reinforcing plate must be welded to the rear chassis cross member, intermediate cross member and the longitudinal support. For best results, weld 2 inches long on 6 inch centers.
6. Layout the mounting holes on the mounting surface. Drill four (4) 0.531" diameter holes and flame cut or drill the 5.00" diameter hole.
7. Lift the crane into position. Make sure the power lead and the two (2) hydraulic hoses are fed through the five-inch (5") diameter hole.
8. Bolt the 2000 crane to the mounting surface with four (4) 0.50" grade eight bolts and four (4) grade eight lock nuts. Torque the 0.50" bolts to 75 foot-pounds. Use of other than 0.50" grade eight bolts and lock nuts may result in the crane breaking loose from the mounting surface when in use.



2000H MOUNTING INSTRUCTIONS**! CAUTION !****-DISCONNECT NEGATIVE BATTERY CABLE BEFORE PROCEEDING-**

8. Run the power lead to the front of the truck. Locate the lead so that it will be protected. Install cable clamps to hold the wire securely in place.
9. Connect the power wire to the positive terminal on the vehicle battery. A 15-amp in-line fuse must be installed near the battery to protect harness from electrical shorts.
10. Reconnect the negative battery cable. The 2000 crane is self-grounding and does not require an additional ground cable.
11. **NOTE:** if a compartment mount crane is being used a minimum of a 2000# crane reinforcement must be installed in the compartment under the crane.
12. The 2000 crane requires a six (6)-gallon/minute flow rate at 1700 PSI to operate efficiently. **It is your responsibility to choose the correct P.T.O. and pump** that will suit this requirement and fit the transmission that is on the truck. The P.T.O. and pump supplier you use will offer assistance in making the correct selection.
13. A throttle advance should also be used to keep the engine RPM's high enough to produce the required flow and pressure. There are many types available depending on your preference. The simplest type is a vernier control cable that must be set with each use. There are other types available that will advance throttle on demand and return idle to normal automatically. These are available in both hydraulic activated and electronically activated.
14. Connect the hydraulic lines as shown in the figure shown on the next page.

! CAUTION !

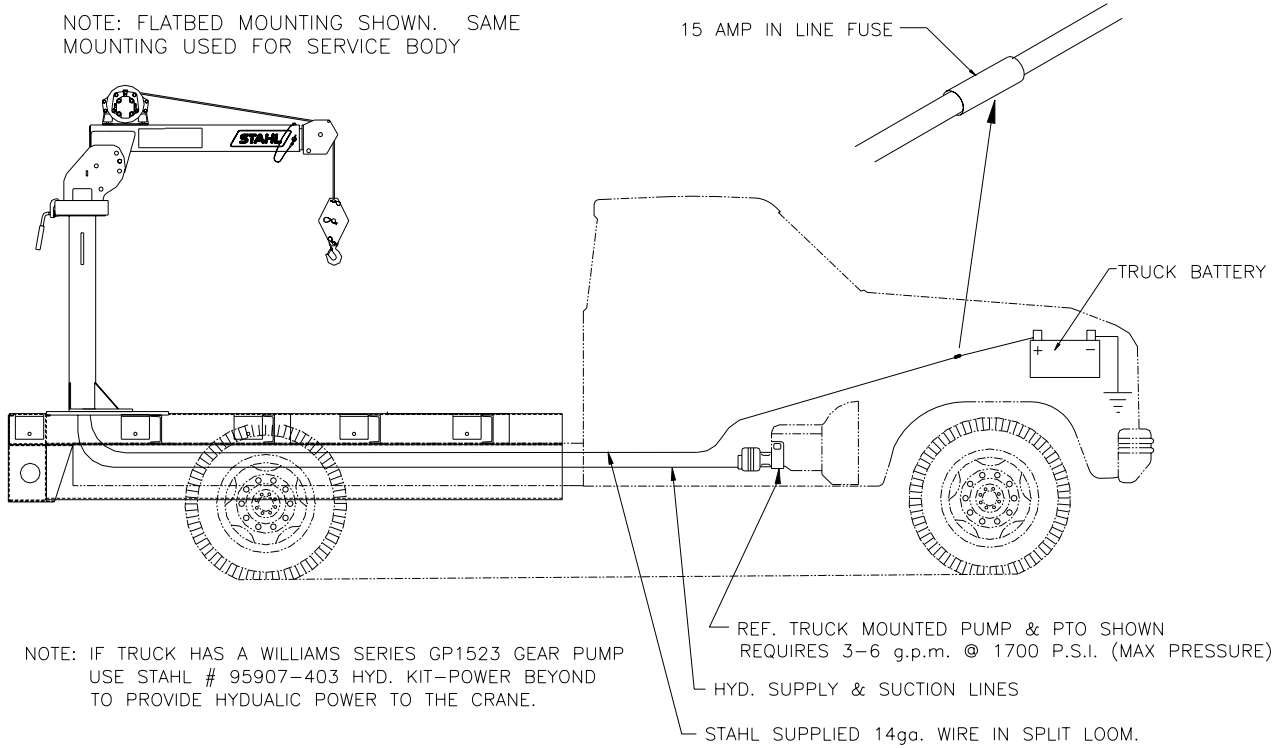
FAILURE TO PUT THE CIRCUIT BREAKER IN PLACE COULD SERIOUSLY DAMAGE THE WINCH MOTOR. A CIRCUIT BREAKER ALSO PROTECTS AGAINST ELECTRICAL SHORTS AND FIRES.

! CAUTION !

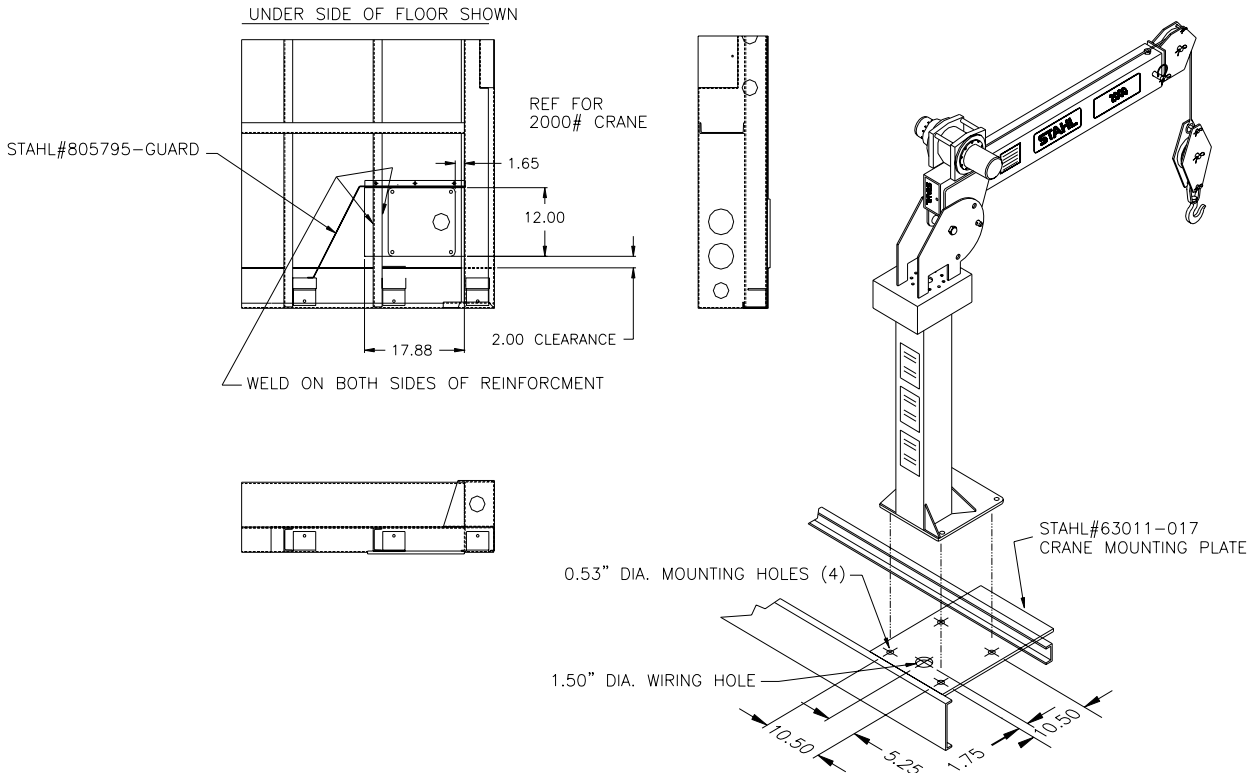
IF THE POWER WIRE IS ROUTED SO THAT IT PASSES THROUGH ANY BODY OR CHASSIS SHEET METAL, A GROMMET MUST BE USED TO PROTECT WIRES FROM BEING CUT. IF THE POWER WIRE COMES INTO CONTACT WITH A GROUNDED SURFACE, A DEAD SHORT WILL OCCUR POSSIBLY CAUSING DAMAGE TO THE CRANE, VEHICLE BATTERY OR ELECTRICAL SYSTEM.

2000H MOUNTING INSTRUCTIONS

NOTE: FLATBED MOUNTING SHOWN. SAME MOUNTING USED FOR SERVICE BODY



NOTE: IF TRUCK HAS A WILLIAMS SERIES GP1523 GEAR PUMP USE STAHL # 95907-403 HYD. KIT-POWER BEYOND TO PROVIDE HYDUALIC POWER TO THE CRANE.

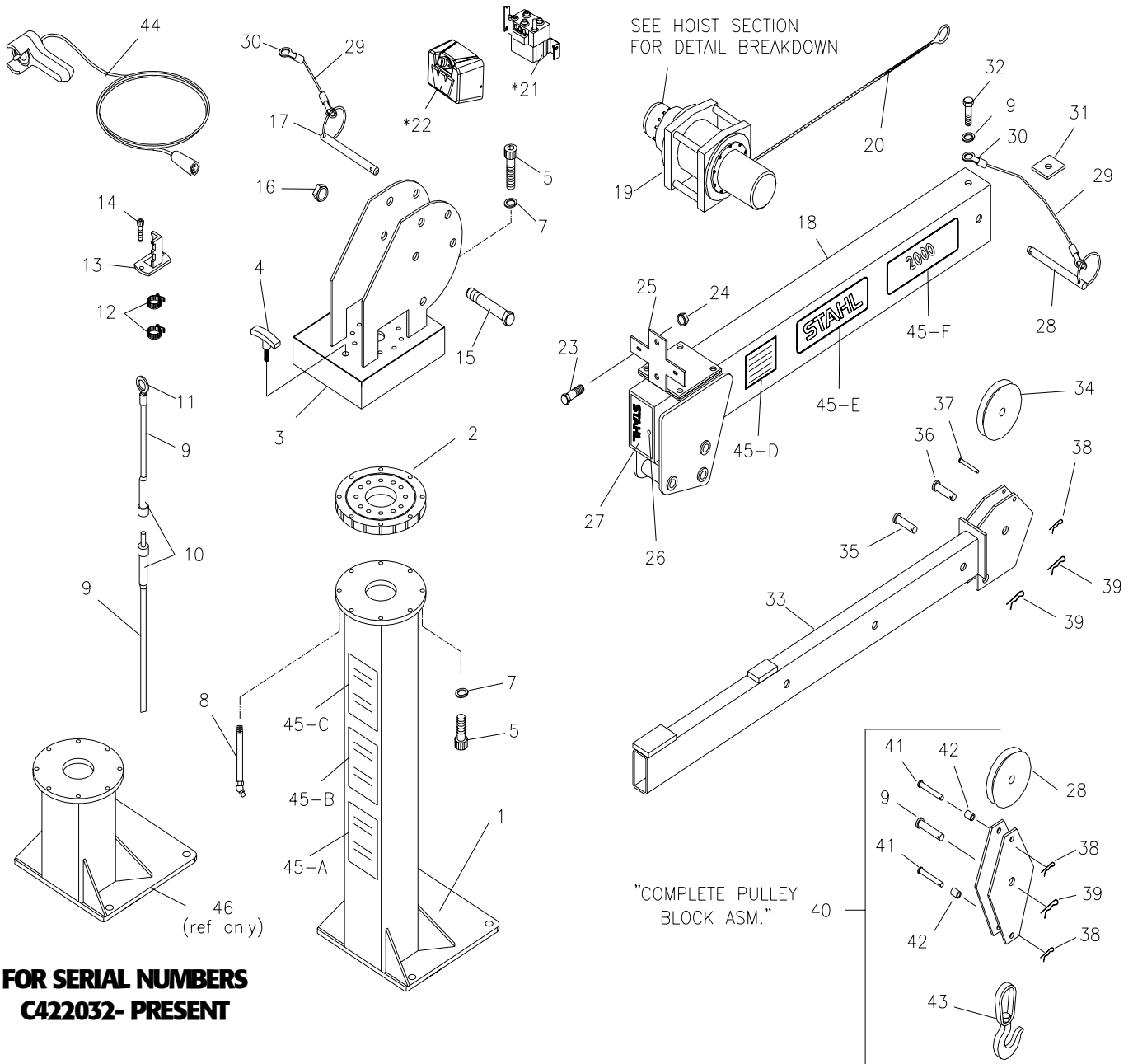


2000E TURRET AND BASE SERVICE PARTS - PART LIST

ITEM	QUANTITY	PART NUMBER	DESCRIPTION
1	1	95220-001	Base weldment
2	1	95240-001	Turret weldment
3	1	95270-001	Main boom weldment
4	1	95280-001	Extension boom weldment
5	1	95297-204	Warn winch
6	1	95204-001	Brake shoe
7	1	95203-001	Brake handle
8	1	95209-001	Handle grip
9	2	95907-197	$\frac{3}{4}$ " X 1- $\frac{3}{4}$ " CLEVIS PIN WITH GREASE INSERT
10	4	95457-001	Hose clamp
11	1	917473	$\frac{3}{4}$ " - 1 0 x 6 grade 8 socket head cap screw
12	1	919714	$\frac{3}{4}$ " - 10 nut
13	2	95422-006	Clevis pin - $\frac{1}{2}$ " x 1 - $\frac{3}{4}$ "
14	1	3891	Serial tag
15	2	95415-001	STAHL decal
16	2	943655	2000 load chart
17	1	943652	Danger decal
18	1	943653	Danger decal
19	1	943654	Caution decal
20	1	95422-003	$\frac{3}{4}$ " X 1 - $\frac{3}{4}$ " clevis pin
21	1	95251-001	Extension lock pin
22	1	95208-001	Angle index pin
23	1	95216-001	Large spindle bushing
24	1	95217-001	Small spindle bushing
25	2	18543-03	Lanyard
26	4	927187	Grommet
27	1	918416	$\frac{1}{8}$ " x $\frac{1}{4}$ " drive screw
28	2	95411-001	Sheave
29	3	95424-002	2.68" cotter pin
30	1	95907-065	Remote control
31	1	95265-001	2000# cable
32	1	95252-001	Boom stop block
33	1	917349	$\frac{3}{8}$ -16 x $\frac{1}{2}$ " hex head cap screw
34	1	960264	Lock washer- $\frac{3}{8}$
35	2	960650	Ring terminal #10-12- $\frac{3}{8}$ " stud
36	3	925063	2.31" cotter pin
37	4	917328	$\frac{1}{4}$ " -20 x $\frac{3}{4}$ " screw
38	4	919702	$\frac{1}{4}$ " - 20 nut
39	1	95211-002	Pulley block assembly
40	2	960680	Copper lug
41	8	961758	1 gauge red cable
42	8	961763	1 gauge black cable
43	2	95297-101	2000 decal
44	1	95297-050	Contact mounting plate
45	1	95212-001	Hook
46	1	95422-004	Pin-clevis
47	2	95428-001	Snatch block spacer
48	1	95907-231	Small hoist contactor
49	1	95907-232	Contact cover
50	1	95218-001	Spindle Bush Thrust
51	1	95220-002	Base weldment-compartment mount

Note: call for special boom and base lengths part numbers.

2000E TURRET AND BASE SERVICE PARTS - ILLUSTRATION



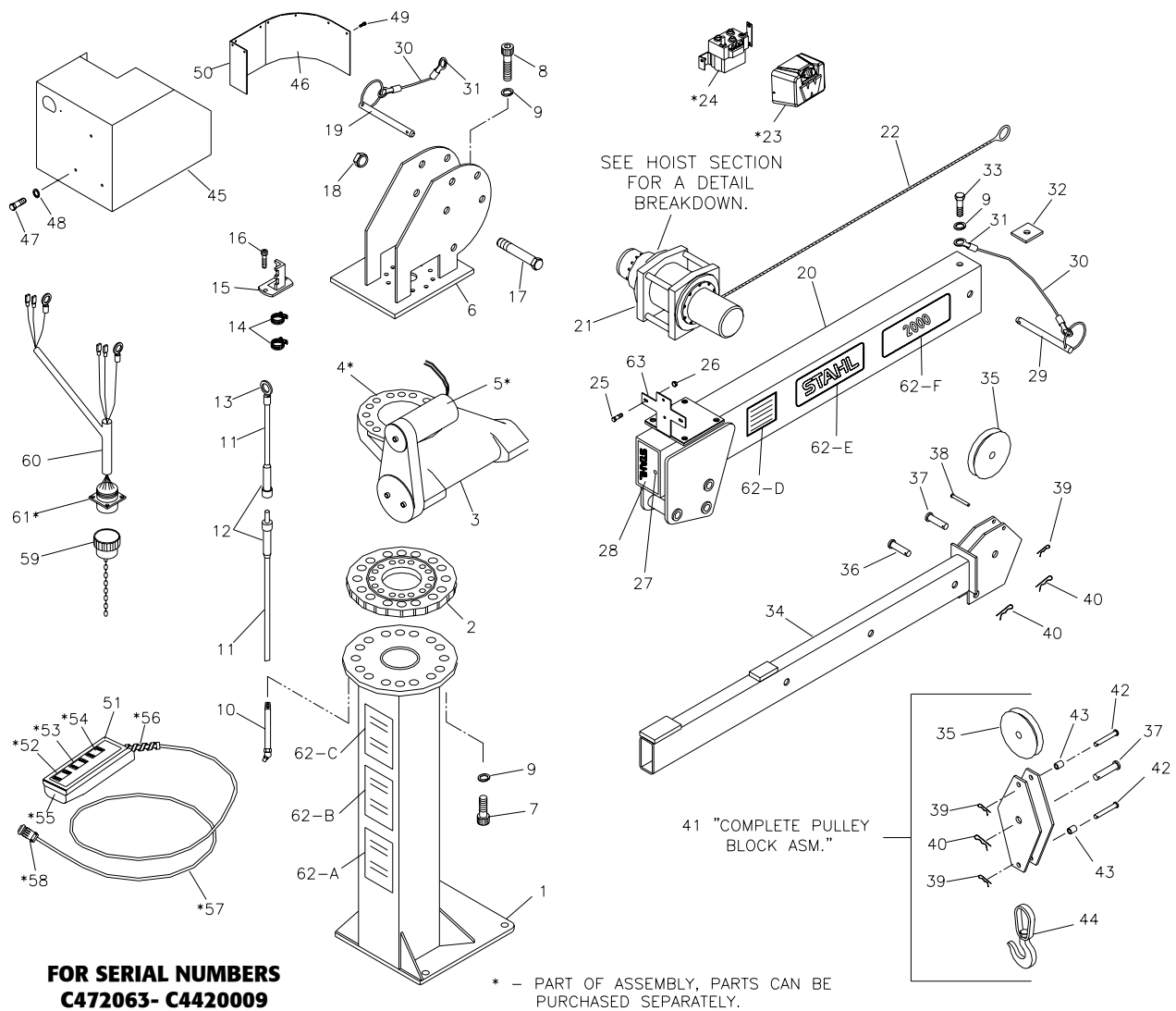
FOR SERIAL NUMBERS
C422032- PRESENT

* - PART OF ASSEMBLY, PARTS CAN BE PURCHASED SEPARATELY.

2000E TURRET AND BASE SERVICE PARTS - PART LIST

ITEM	QUANTITY	PART NUMBER	DESCRIPTION
1	1	95297-187	Base weldment
2	1	95297-027	Slewing ring
3	1	95297-198	Turret weldment
4	1	154884	T-handle rotation lock
5	18	964058	3/8"-16 x 1-1/4" socket head cap screw
6			
7	19	960264	3/8" lock washer
8	1	118543	Grease fitting
9	10 ft	961758	1 gauge red cable
10	1	95453-001	Tweco connector assembly
11	1	960680	Copper lug
12	4	95457-001	Hose clamp
13	1	95297-048	Bottom holder assembly
14	2	917954	5/16" x 1/4"-20 x 3/8" shoulder bolt
15	1	917473	3/4"-10 x 6 grade 8 hex head cap screw
16	1	919714	3/4"-10 nut
17	1	95208-001	Angle index pin
18	1	95297-117	Main boom weldment
19	1	95297-204	Warn winch
20	1	95265-001	2000# cable
21	1	95907-232	Contacto cover
22	1	95907-231	Small hoist contactor
23	2	917328	1/4" - 20 x 3/4" screw
24	2	919702	1/4" - 20 nut
25	1	95297-176	Contacto mounting plate
26	1	3891	Serial tag
27	1	918416	1/8" x 1/4" drive screw
28	1	95251-001	Extension lock pin
29	2	18543-03	Lanyard
30	2	960650	Ring terminal #10-12-3/8" stud
31	1	95252-001	Boom stop block
32	1	917349	3/8"-16 x 1/2" hex head cap screw
33	1	95280-001	Extension boom weldment
34	2	95411-001	Sheave
35	1	95422-003	3/4" X 1-3/4" clevis pin
36	2	95907-197	3/4" X 1-3/4" clevis pin with grease fitting
37	1	95422-004	Pin-clevis
38	3	925063	2.31" cotter pin
39	3	95424-002	2.68" cotter pin
40	1	95211-002	Pulley block assembly
41	2	95422-006	Clevis pin - 1/2" x 1.75"
42	2	95428-001	Snatch block spacer
43	1	95212-001	Hook
44	1	95907-065	Remote control
45	1	95907-507	Complete decal kit
45-A	1	943652	Danger decal
45-B	1	943653	Danger decal
45-C	1	943654	Caution decal
45-D	2	943655	2000 load chart
45-E	2	95415-001	STAHL DECAL
45-F	2	95297-101	2000 decal

2000R CRANE ASSEMBLY SERVICE PARTS – PARTS LIST



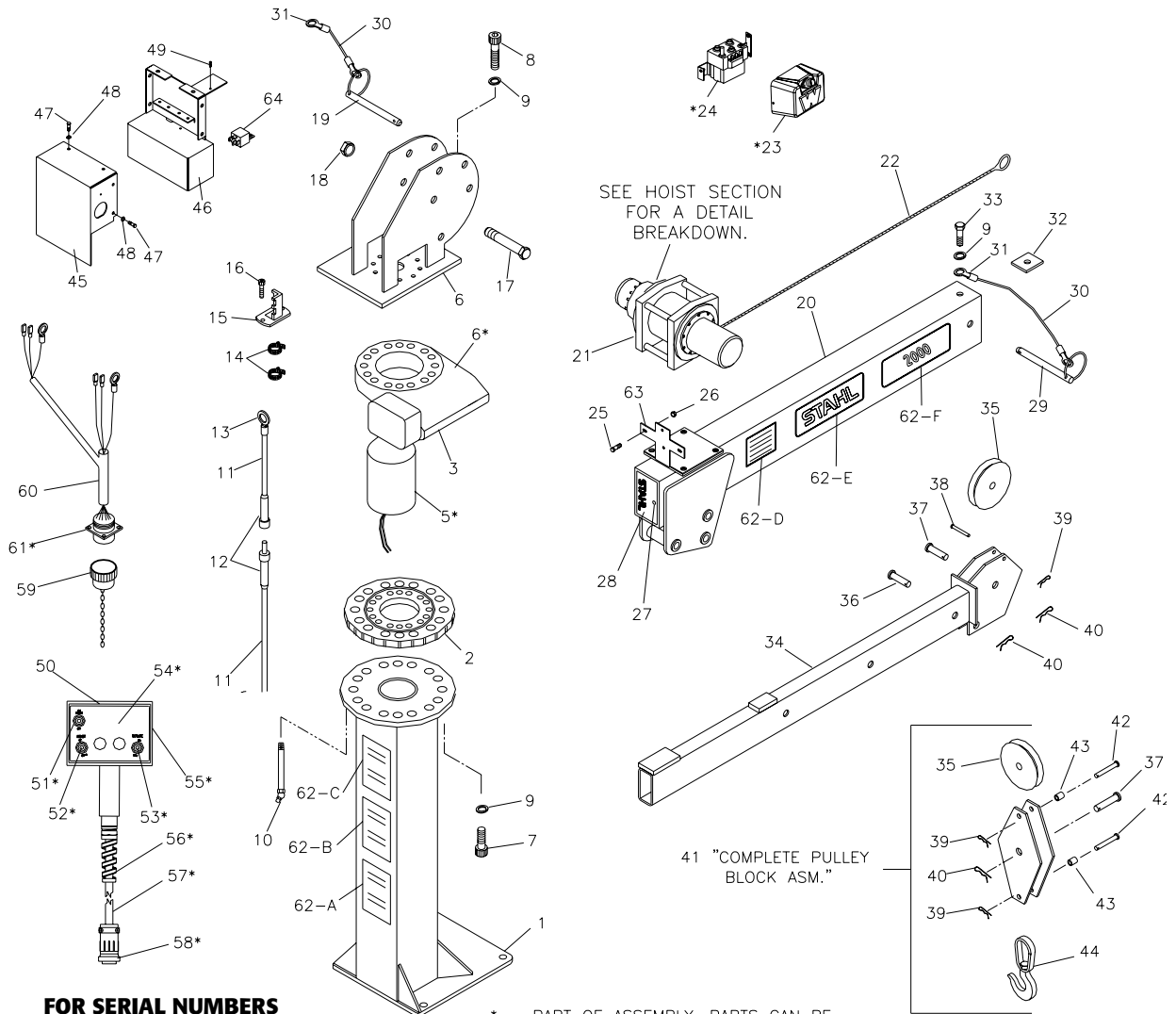
2000R CRANE ASSEMBLY SERVICE PARTS –PART LIST

ITEM	QUANTITY	PART NUMBER	DESCRIPTION
1	1	95297-187	Base weldment
2	1	95297-027	Slewing ring
3	1	95907-508	Rotation drive upgrade kit
4	1	Not available	Worm gear-drive unit
5	1	Not available	12 volt motor
6	1	95297-035	Turret weldment
7	8	964058	3/8"-16 x 1-1/4" socket head cap screw
8	10	917691	3/8"-16 x 2-1/4" socket head cap screw
9	19	960264	3/8" lock washer
10	1	118543	Grease fitting
11	10 ft	961758	1 gauge red cable
12	1	95453-001	Tweco connector assembly
13	1	960680	Copper lug
14	4	95457-001	Hose clamp
15	1	95297-048	Bottom tweco holder assembly

2000R CRANE ASSEMBLY SERVICE PARTS - PART LIST CONTINUED

ITEM	QUANTITY	PART NUMBER	DESCRIPTION
16	2	917954	5/16" x 1/4"-20 x 3/8" shoulder bolt
17	1	917473	3/4"-10 x 6 grade 8 hex head cap screw
18	1	919714	3/4"-10 nut
19	1	95208-001	Angle index pin
20	1	95297-036	Main boom weldment
21	1	95297-204	Warn winch
22	1	95265-001	2000# cable
23	1	95907-232	Contactor cover
24	1	95907-231	Small hoist contactor
25	2	917328	1/4" - 20 x 3/4" screw
26	2	919702	1/4" - 20 nut
27	1	3891	Serial tag
28	1	918416	1/8" x 1/4" drive screw
29	1	95251-001	Extension lock pin
30	2	18543-03	Lanyard
31	2	960650	Ring terminal #10-12-3/8" stud
32	1	95252-001	Boom stop block
33	1	917349	3/8"-16 x 1/2" hex head cap screw
34	1	95280-001	Extension boom weldment
35	2	95411-001	Sheave
36	1	95422-003	3/4" X 1-3/4" clevis pin
37	2	95907-197	3/4" X 1-3/4" clevis pin with grease fitting
38	1	95422-004	3/8 X 1-3/4 clevis pin
39	3	925063	2.31" cotter pin
40	3	95424-002	2.68" cotter pin
41	1	95211-002	Pulley block assembly
42	2	95422-006	Clevis pin – 1/2" x 1.75"
43	2	95428-001	Snatch block spacer
44	1	95212-001	Hook
45	1	95297-053	2000R shroud
46	1	95297-055	Large gear shroud
47	3	917326	1/4"-20 x 1/2" hex head cap screw
48	3	919864	1/4" lock washer
49	11	962111	10-24 x 3/8" self tapping screw
50	1	95297-056	Small gear shroud
51	1	95297-051	2000R remote control
52	1	963942	Rocker switch – spst (on/off)
53	1	963941	Rocker switch – spdt (on/off/on)
54	1	963943	Rocker switch – dpdt (on/off/on)
55	1	95404-001	Housing-remote control
56	1	95405-001	Strain relief
57	1	961762	25 ft cable-remote control
58	1	961675	Male plug
-	12	961676	16 gauge socket
-	4	961679	12 gauge socket
-	7	961677	Plug seal
59	1	95618-006	Dust cap
60	1	95297-054	2000R harness
61	1	95618-007	Receptacle
-	3	95618-009	12 gauge pin
-	12	95618-010	16 gauge pin
-	4	95618-008	Seal plug
62	1	95907-501	Complete decal kit
62-A	1	943652	Danger decal
62-B	1	943653	Danger decal
62-C	1	943654	Caution decal
62-D	2	95297-034	2000R load chart
62-E	2	95415-001	STAHL DECAL
62-F	2	95297-033	2000 decal
63	1	95297-176	Contactor mounting plate

2000R CRANE ASSEMBLY SERVICE PARTS - ILLUSTRATION



**FOR SERIAL NUMBERS
C4420010-PRESENT**

* - PART OF ASSEMBLY, PARTS CAN BE PURCHASED SEPARATELY.

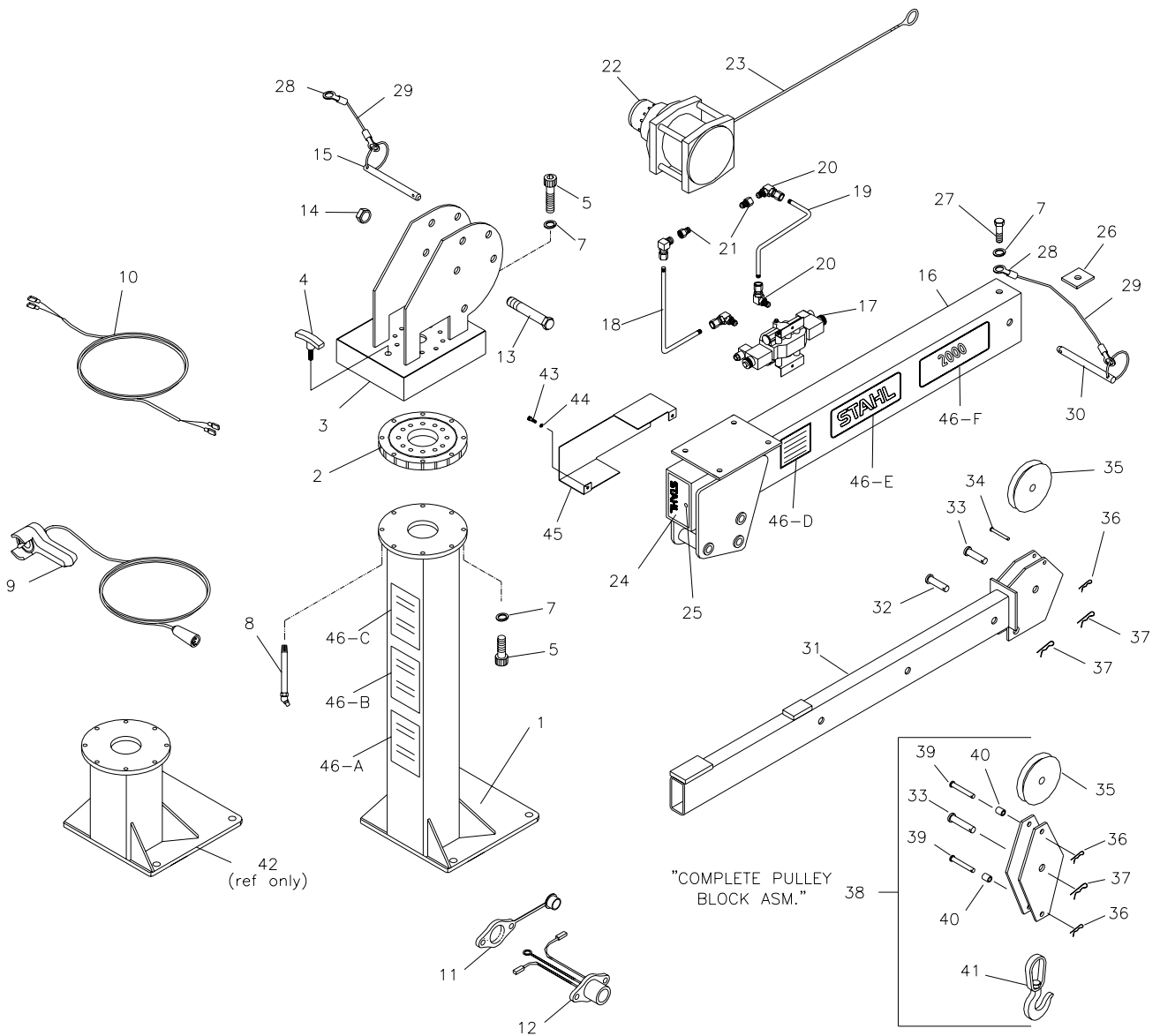
2000R CRANE ASSEMBLY SERVICE PARTS -PART LIST

ITEM	QUANTITY	PART NUMBER	DESCRIPTION
1	1	95297-187	Base weldment
2	1	95297-027	Slewing ring
3	1	95297-028	12 volt drive unit
4	1	95907-506	Worm gear-drive unit
5	1	95907-280	12 volt motor
6	1	95297-222	Turret weldment
7	8	964058	3/8"-16 x 1-1/4" socket head cap screw
8	10	917691	3/8"-16 x 2-1/4" socket head cap screw
9	19	960264	3/8" lock washer
10	1	118543	Grease fitting
11	10 ft	961758	1 gauge red cable
12	1	95453-001	Tweco connector assembly
13	1	960680	Copper lug
14	4	95457-001	Hose clamp
15	1	95297-048	Bottom holder assembly

2000R CRANE ASSEMBLY SERVICE PARTS - PART LIST CONTINUED

ITEM	QUANTITY	PART NUMBER	DESCRIPTION
16	2	917954	5/16" x 1/4"-20 x 3/8" shoulder bolt
17	1	917473	3/4"-10 x 6 grade 8 hex head cap screw
18	1	919714	3/4"-10 nut
19	1	95208-001	Angle index pin
20	1	95297-036	Main boom weldment
21	1	95297-204	Warn winch
22	1	95265-001	2000# cable
23	1	95907-232	Contactor cover
24	1	95907-231	Small hoist contactor
25	2	917328	1/4" - 20 x 3/4" screw
26	2	919702	1/4" - 20 nut
27	1	3891	Serial tag
28	1	918416	1/8" x 1/4" drive screw
29	1	95251-001	Extension lock pin
30	2	18543-03	Lanyard
31	2	960650	Ring terminal #10-12-3/8" stud
32	1	95252-001	Boom stop block
33	1	917349	3/8"-16 x 1/2" hex head cap screw
34	1	95280-001	Extension boom weldment
35	2	95411-001	Sheave
36	1	95422-003	3/4" X 1-3/4" clevis pin
37	2	95907-197	3/4" X 1-3/4" clevis pin with grease fitting
38	1	95422-004	3/8 X 1-3/4 clevis pin
39	3	925063	2.31" cotter pin
40	3	95424-002	2.68" cotter pin
41	1	95211-002	Pulley block assembly
42	2	95422-006	Clevis pin - 1/2" x 1.75"
43	2	95428-001	Snatch block spacer
44	1	95212-001	Hook
45	1	95297-221	Shroud-top
46	1	95297-223	Shroud-base/front
47	6	917326	1/4"-20 x 1/2" hex head cap screw
48	6	919864	1/4" lock washer
49	3	962111	10-24 x 3/8" self tapping screw
50	1	95297-051	2000R remote control
51	1	95907-425	Toggle switch - spst (on/off)
52	1	95907-424	Toggle switch - spdt (on/off/on)
53	1	95907-494	Toggle switch - dpdt (on/off/on)
54	1	95907-467	Face plate
55	1	95907-429	Housing-remote control
56	1	95405-001	Strain relief
57	1	95907-426	25 ft cable-remote control
58	1	961675	Male plug
-	6	961676	16 gauge socket
-	3	961679	12 gauge socket
-	10	961677	Plug seal
59	1	95618-006	Dust cap
60	1	95297-225	2000R harness
61	1	95618-007	Receptacle
-	1	95618-009	12 gauge pin
-	5	95618-010	16 gauge pin
-	12	95618-008	Seal plug
62	1	95907-501	Complete decal kit
62-A	1	943652	Danger decal
62-B	1	943653	Danger decal
62-C	1	943654	Caution decal
62-D	2	95297-034	2000 load chart
62-E	2	95415-001	STAHL DECAL
62-F	2	95297-033	2000 decal
63	1	95297-176	Contactor mounting plate
64	4	963640	Relay-12 volt/40 amp

2000H CRANE ASSEMBLY SERVICE PARTS - ILLUSTRATION



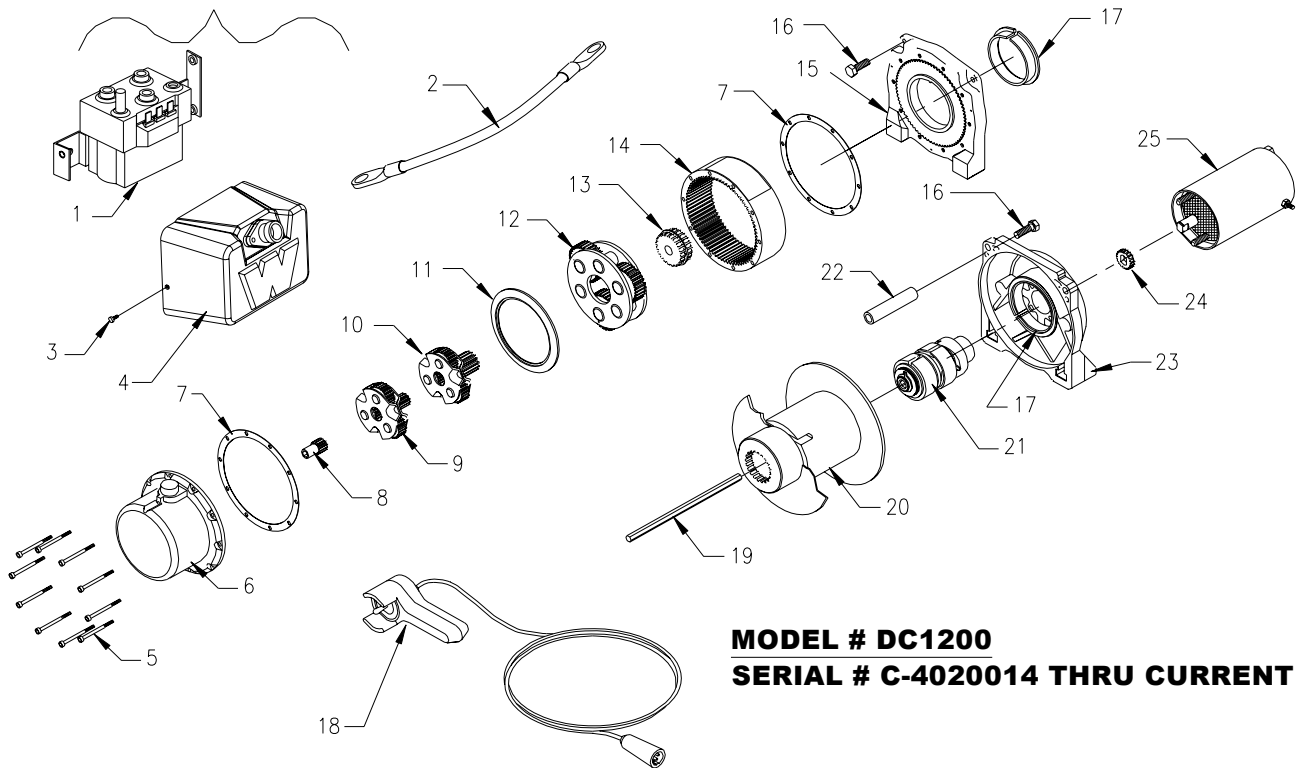
* - PART OF ASSEMBLY, PARTS CAN BE PURCHASED SEPARATELY.

2000H CRANE ASSEMBLY SERVICE PARTS - PART LIST

ITEM	QUANTITY	PART NUMBER	DESCRIPTION
1	1	95297-116	Base weldment
2	1	95297-027	Slewing ring
3	1	95297-115	Turret weldment
4	1	154884	T-handle rotation lock
5	18	964058	3/8"-16 x 1-1/4" socket head cap screw
6			
7	19	960264	3/8" lock washer
8	1	118543	Grease fitting
9	1	95297-184	Remote control
10	1	95297-123	Harness kit
11	1	95297-131	Plug cover
12	1	95297-132	Receptacle plug
13	1	917473	3/4"-10 x 6 grade 8 hex head cap screw
14	1	919714	3/4"-10 nut
15	1	95208-001	Angle index pin
16	1	95297-117	Main boom weldment
17	1	95297-107	Valve-single bank
18	1	95297-122	Tube-ccw-up
19	1	95297-121	Tube-cw-down
20	4	95488-006	Male elbow 3/8 tube to 9/16-18 o-ring
21	2	95488-027	Fitting adaptor-#12-#6 o-ring
22	1	95297-106	Winch-Pullmaster-PL-1
23	1	95265-001	Cable with thimble
24	1	3891	Serial tag
25	1	918416	1/8" x 1/4" drive screw
26	1	95252-001	Boom stop block
27	1	917349	3/8"-16 x 1/2" hex head cap screw
28	2	960650	Ring terminal #10-12-3/8" stud
29	2	18543-03	Lanyard
30	1	95251-001	Extension lock pin
31	1	95280-001	Extension boom weldment
32	1	95422-003	3/4" X 1-3/4" clevis pin
33	2	95907-197	3/4" X 1-3/4" clevis pin with grease fitting
34	1	95422-004	3/8" x 1-3/4" clevis pin
35	2	95411-001	Sheave
36	3	925063	2.31" cotter pin
37	3	95424-002	2.68" cotter pin
38	1	95211-002	Pulley block assembly
39	2	95422-006	Clevis pin - 1/2" x 1.75"
40	2	95428-001	Snatch block spacer
41	1	95212-001	Hook
42	1	95297-135	Base weldment (compartment mounted crane)
43	2	917326	1/4-20 x 1/2 hex head cap screw
44	2	919864	1/4" lock washer
45	1	95297-178	Shroud-valve
46	1	95907-500	Complete decal kit-2000 series crane
	1	943652	Danger decal
	1	943653	Danger decal
	1	943654	Caution decal
	2	95297-034	2000R load chart
	2	95415-001	STAHL DECAL
	2	95297-101	2000 decal

WINCH ASSEMBLY SERVICE PARTS (2000E & 2000R)

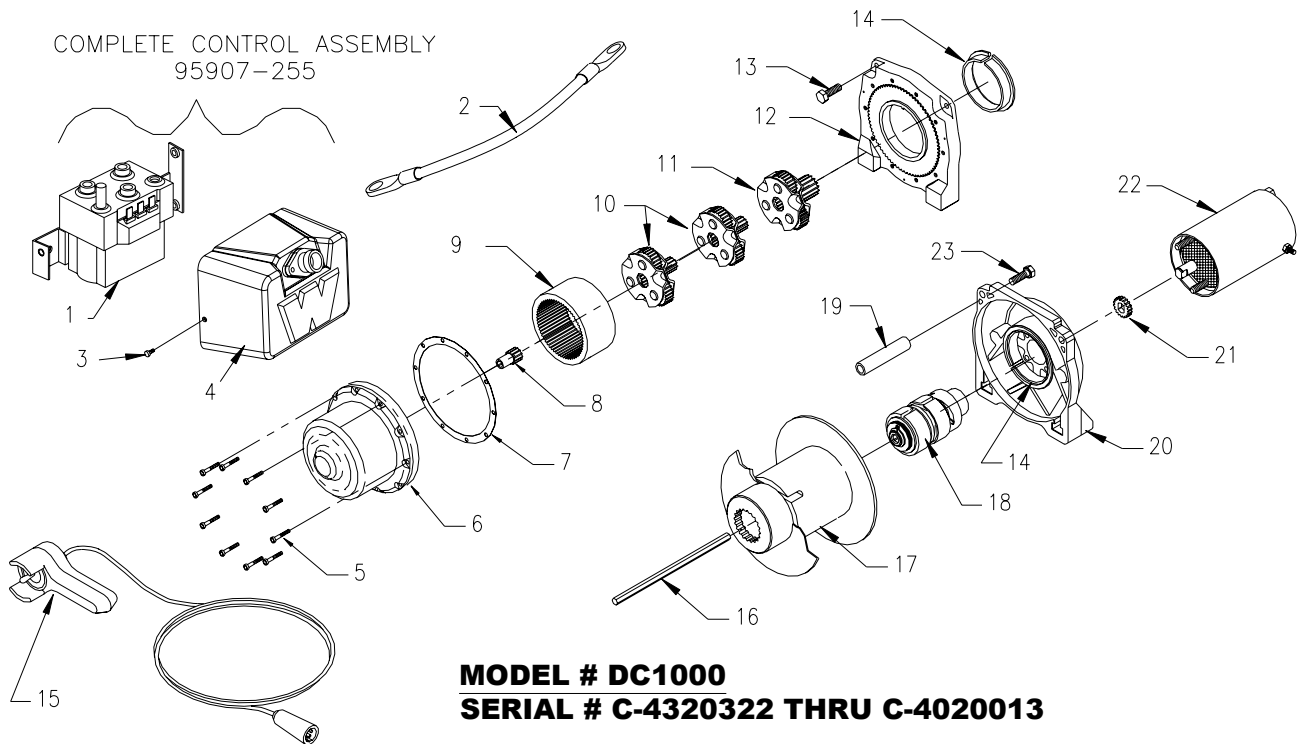
COMPLETE CONTROL ASSEMBLY
95907-255



MODEL # DC1200
SERIAL # C-4020014 THRU CURRENT

ITEM	QUANTITY	PART NUMBER	DESCRIPTION
1	1	95907-231	Contactora-12V
2	2	95907-258	Cable-2 Ga. Black
3	3	95907-257	Screw 10-24 x 3/8 Gr. 2
4	1	95297-094	Cover/Remote Plug
5	10	95297-086	SHCS 10-24 x 2.25
6	1	95297-087	End Housing/Clutch Plug
7	2	95907-243	Gasket-Housing
8	1	95907-244	12 Tooth Sun Gear-Stage 1
9	1	95297-088	Carrier Assembly-Stage 1
10	1	95297-089	Carrier Assembly-Stage 2
11	2	95297-090	Midrange Thrust Washer-Nylon
12	1	95297-091	Carrier Assembly-Stage 3
13	1	95297-092	Drive-Splined
14	1	95297-093	Ring Gear-75 Tooth
15	1	95297-096	Drum Support
16	4	95297-095	Self Tapping Bolt-5/16-18 x 1.00
17	2	95907-250	Drum Bushing-Nylon
18	1	95907-065	Remote Control
19	1	95297-100	Hex Drive Shaft
20	1	95297-099	Drum-3.50"
21	1	95297-098	Brake Assembly
22	2	95907-252	Spacer
23	1	95907-249	Housing
24	1	95907-251	Input Gear
25	1	95297-097	Motor-12V

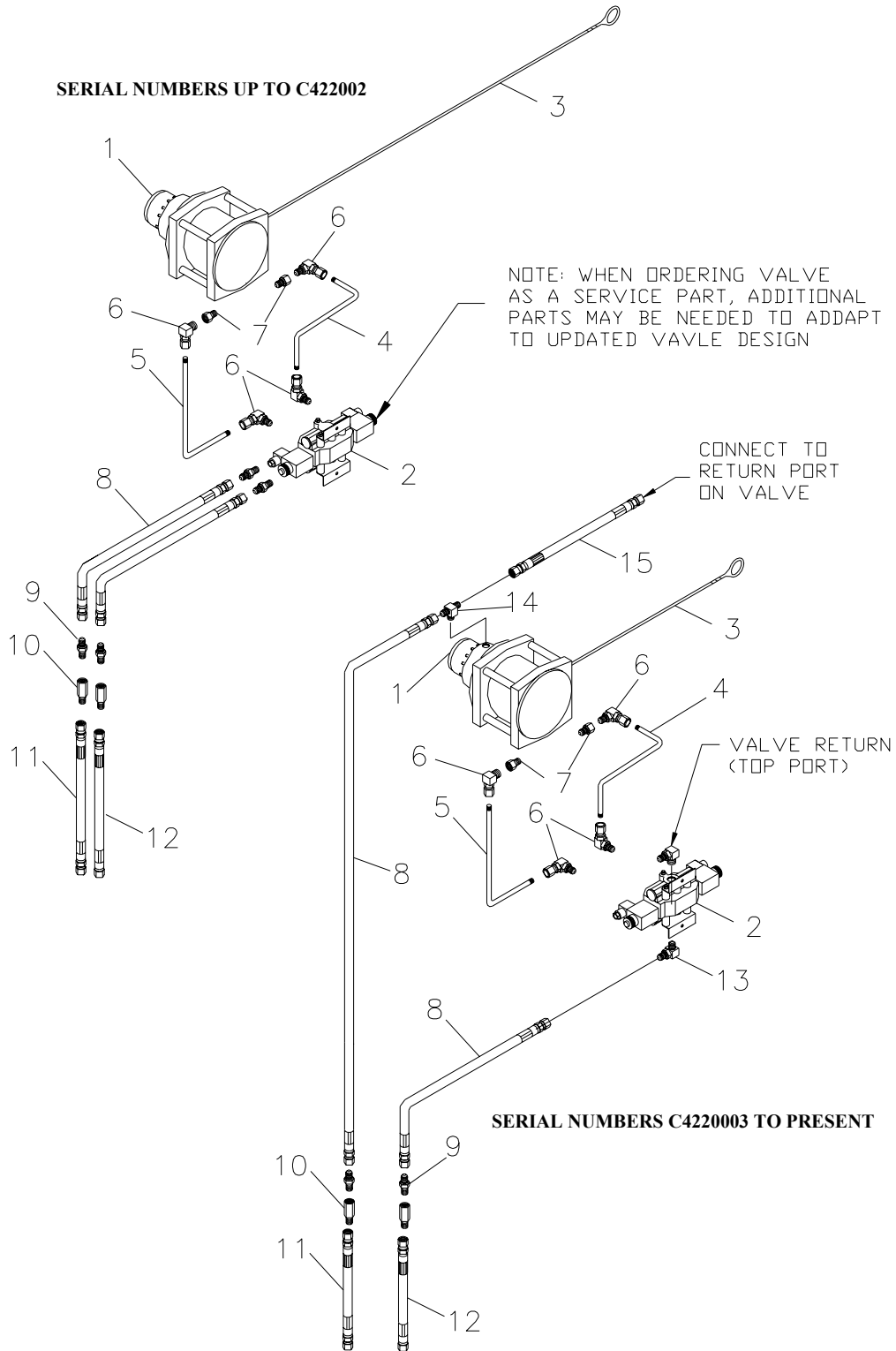
WINCH ASSEMBLY SERVICE PARTS (2000E & 2000R)



MODEL # DC1000
SERIAL # C-4320322 THRU C-4020013

ITEM	QUANTITY	PART NUMBER	DESCRIPTION
1	1	95907-231	Contactora-12V
2	2	95907-258	Cable-2 Ga. Black
3	3	95907-257	Screw 10-24 x 3/8 Gr. 2
4	1	95907-094	Cover/Remote Plug
5	10	95907-241	SHCS 10-24 x 3/4 Gr. 9
6	1	95907-242	End Cap
7	1	95907-243	Gasket-Housing
8	1	95907-244	12 Tooth Sun Gear-Stage 1
9	1	95907-248	Ring Gear
10	2	95907-335	Carrier Gear
11	1	95907-233	Carrier Gear
12	1	95907-245	Housing
13	4	95907-246	Screw
14	2	95907-250	Drum Bushing-Nylon
15	1	95907-065	Remote Control
16	1	95907-253	Hex Shaft
17	1	95907-254	Drum-3.50 Diameter
18	1	95907-194	Brake Assembly
19	2	95907-252	Spacer
20	1	95907-249	Housing
21	1	95907-251	Input Gear
22	1	95907-118	Motor-12V
23	2	95297-095	5/16-18 x 1.00 self tapping bolt

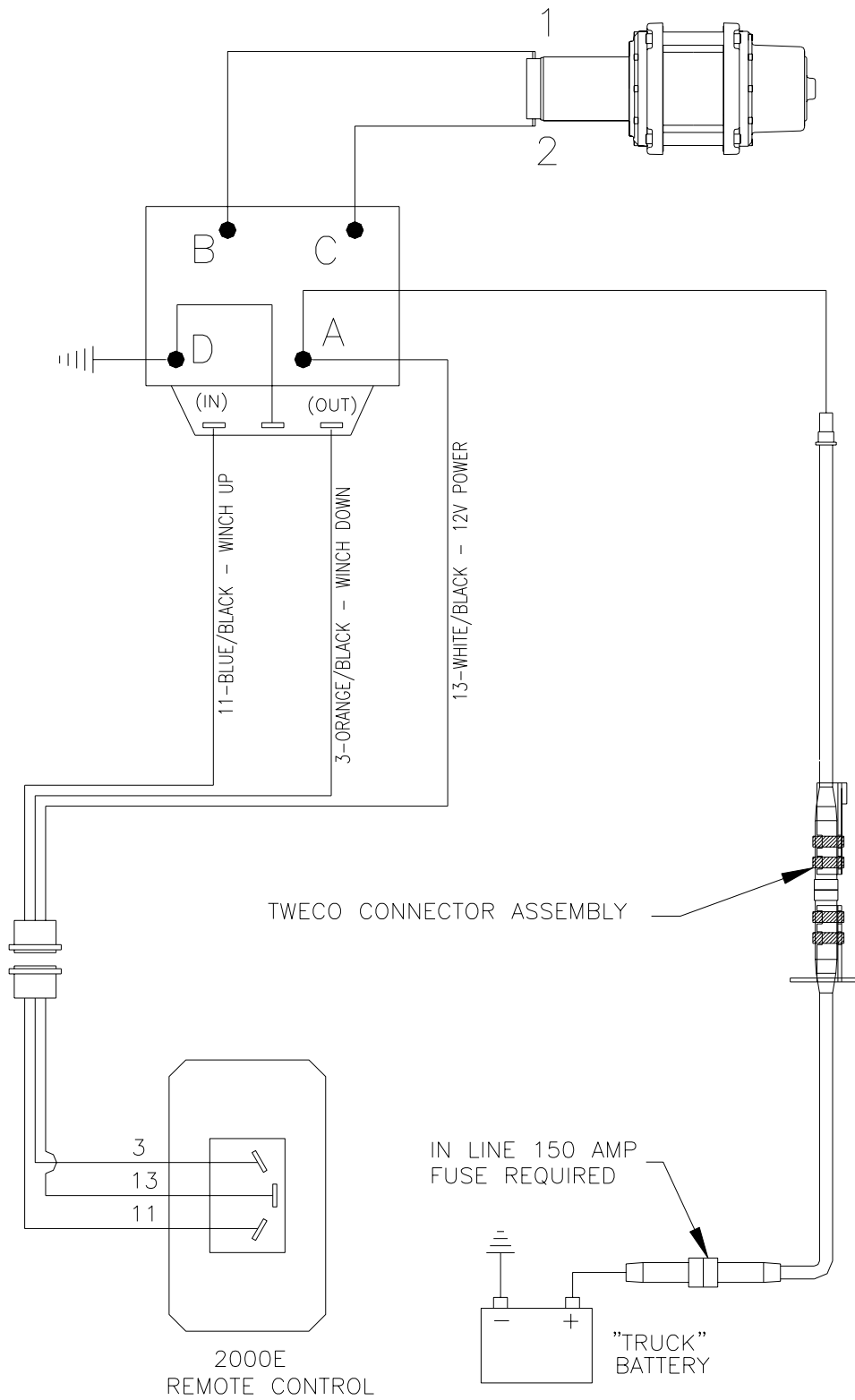
HYDRAULIC COMPONENT SERVICE PARTS - ILLUSTRATION



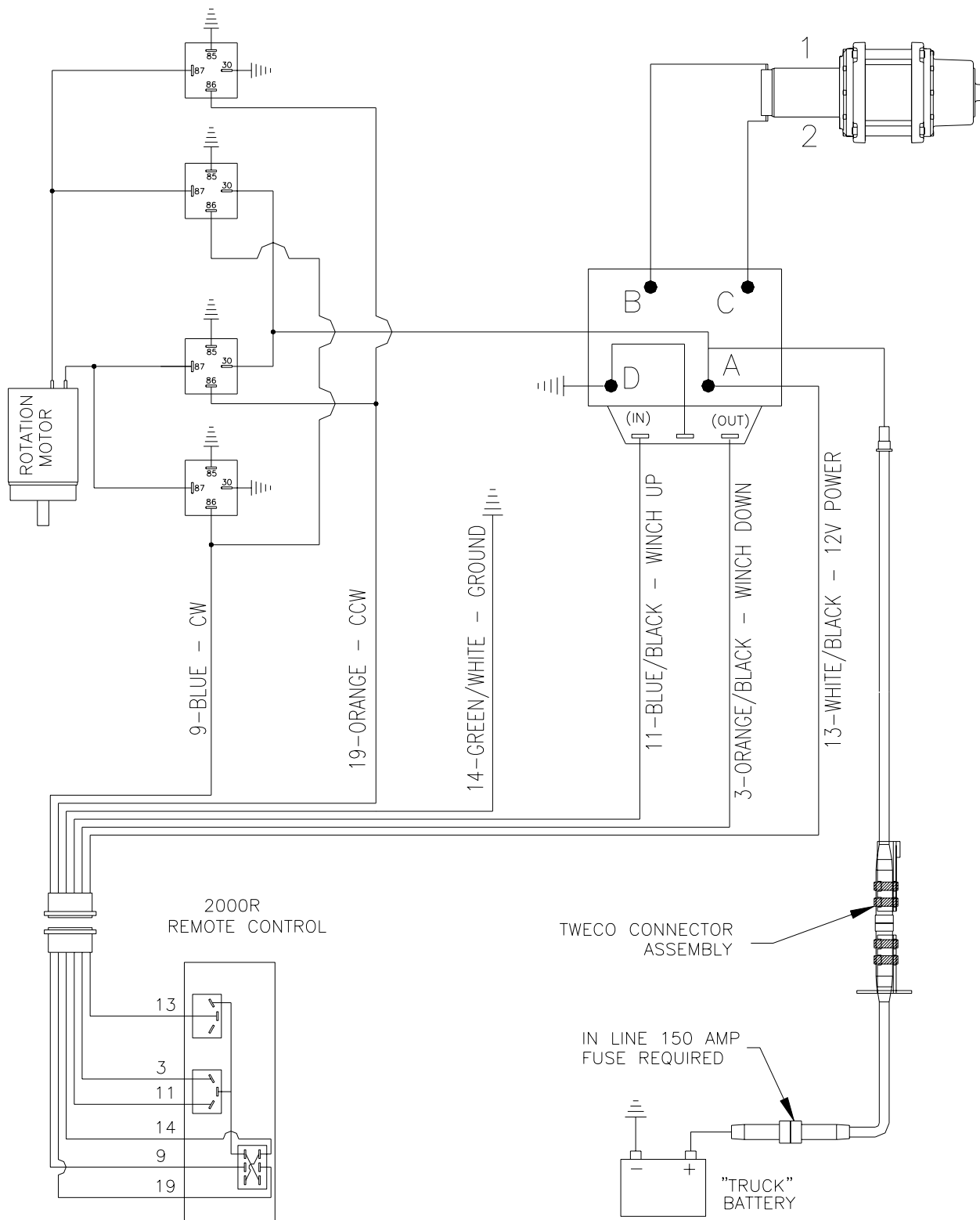
HYDRAULIC COMPONENTS PARTS LIST

ITEM	QUANTITY	PART NUMBER	DESCRIPTION
1	1	95297-106	WINCH-PULLMASTER
2	1	95297-107	VALVE-SINGLE BANK
3	1	95265-001	CABLE WITH THIMBLE
4	1	95297-122	TUBE-CCW-UP
5	1	95297-121	TUBE-CW-DOWN
6	4	95488-006	MALE ELBOW 3/8 TUBE TO 9/16-18 O-RING
7	2	95488-027	FITTING ADAPTOR-#12-#6 O-RING
8	2	95498-010	HOSING WITH 3/8 FEMALE JIC SWIVEL
9	2	938265	BULKHEAD UNION 3/8 JIC TO 3/8 JIC
10	2	95488-026	INLINE SWIVEL 3/8 JIC TO 3/8 JIC
11	1	95297-130	HOSE RETURN-60"
12	1	95297-129	HOSE-PRESSURE-62"
13	2	95488-016	MALE ELBOW 3/8 JIC TO 3/4 O-RING
14	1	95488-031	T-FITTING 3/8 JIC TO 1/4 NPT PIPE
15	1	95498-009	HOSE WITH 3/8 JIC SWIVEL

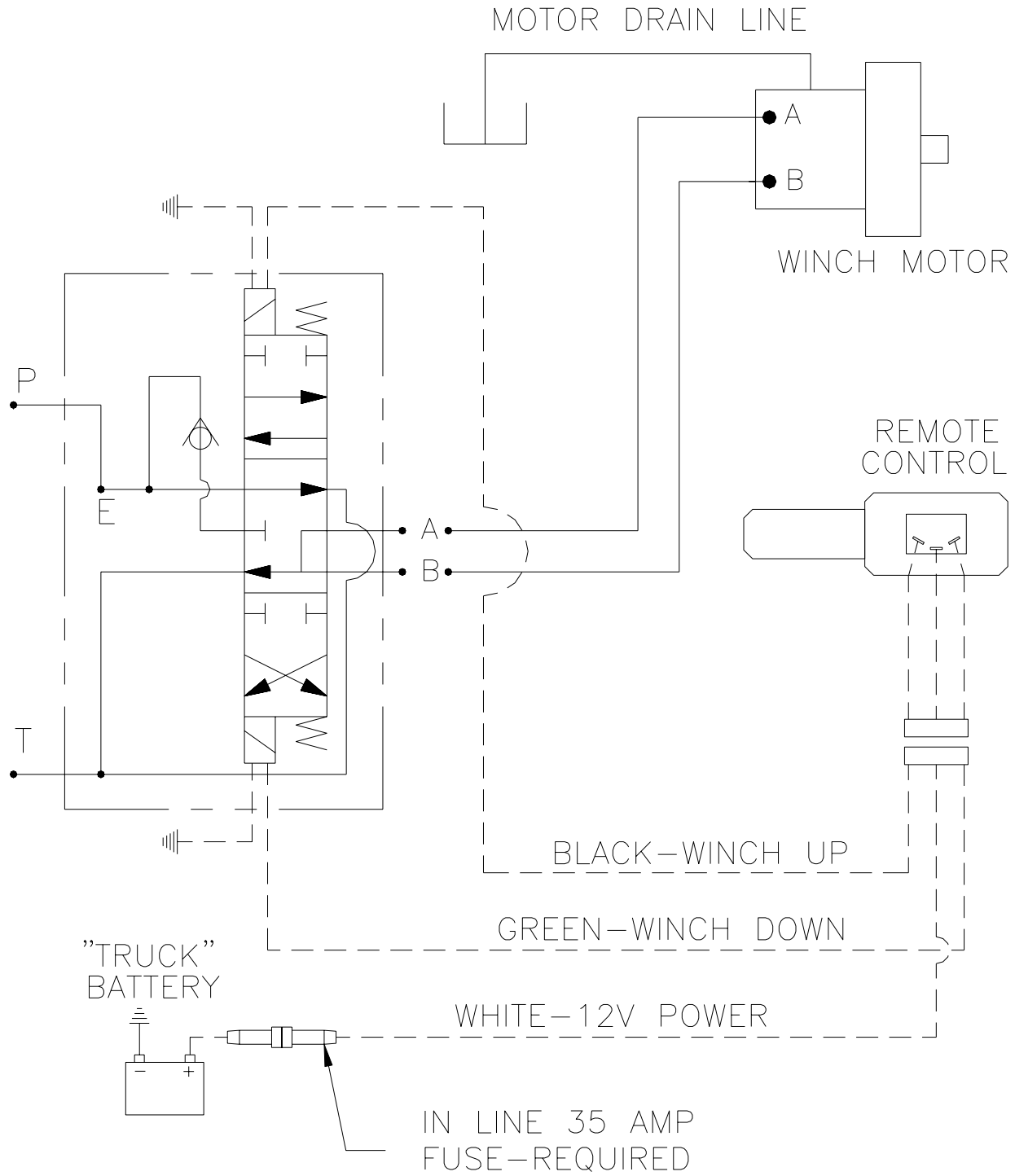
ELECTRICAL SCHEMATIC-2000E



ELECTRICAL SCHEMATIC-2000R



HYDRAULIC/ELECTRICAL SCHEMATIC-2000H



ONE – YEAR LIMITED WARRANTY

COVERED PRODUCTS:

- ❑ **STAHL Crane** – One (1) year from the date of purchase by the original owner of record for s parts including the structural integrity of the crane boom assembly, turret assembly, and base plate weldment. Product(s) not made of galvaneal steel are warranted to the original owner of record for 180 days from the date of purchase.
- ❑ Should the warranted product rust through s will cover labor and materials to replace and/or repair defective materials and/or install new materials (solely at the discretion of s)
- ❑ The foregoing collectively constitutes the “Warranty”.

ELIGIBILITY.

- ❑ This Warranty shall only apply to products listed herein and initially purchased after June 1, 1995
- ❑ Product(s) warranted must be properly maintained and serviced under the guidelines recommended in the owner’s manual. The original owner must complete and submit the warranty registration card within thirty (30) days of purchase.
- ❑ This Warranty applies only when an authorized s up fitter properly installs the product, and it is used for the purpose for which it was designed.
- ❑ This Warranty is not transferable.

EXCLUSIONS

- ❑ This Warranty applies to s Cranes only and excludes all items supplied by distributors or mounting stations including, but not limited to finish paint, lettering, installation, wiring, optional parts, modifications and the like.
- ❑ Product(s) that have been misused, abused, altered, or intentionally damaged.

SPECIFIC “NO RUST, NO BUST” WARRANTY EXCLUSIONS

- ❑ Product(s) must have perforation in the metal. Rust in the paint or surface rust is not considered rust through.
- ❑ Product(s) purchased in prime paint condition.
- ❑ Product(s) purchased and used outside the United States and Canada.
- ❑ Product(s) used to carry corrosive materials.
- ❑ **STAHL** shall not be liable to the original owner/user or any third party for any direct or indirect, incidental or consequential damages including, but not limited to, transportation costs, lost profits, and loss of income, as a result of a vehicle being out of service.

WARRANTY CLAIMS PROCEDURE

- ❑ Claims may be handled by contacting your nearest authorized s distributor. All claims are to be filed in writing and will be administered through a **STAHL** distributor. All repairs must be authorized by s prior to any work being performed and must be done by an authorized s distributor or by a person or company pre-approved by s in writing.
- ❑ **STAHL** reserves the right to inspect products returned by the original owner under this Warranty to determine whether the product is covered. Inspection shall, at **STAHL**’s option, be performed at the factory, or at such other reasonable place as may be designated by s, and in such event freight for returning products shall be paid by the original owner. **STAHL** also reserves the right to require dated proof of purchase from the original owner. Unauthorized repair or replacement prior to inspection or repair or replacement not in accordance with s recommendations and procedures may void the Warranty.

DISCLAIMER OF IMPLIED WARRANTIES; LIMITATIONS OF REMEDIES:

THERE ARE NO OTHER WARRANTIES, EXPRESSED OR IMPLIED, GIVEN BY **STAHL** FOR THIS PRODUCT. IMPLIED WARRANTIES OF MERCHANTABILITY AND FITNESS FOR A PARTICULAR PURPOSE ARE SPECIFICALLY DISCLAIMED. THE PURCHASER’S REMEDIES FOR LOSS, DAMAGE, OR EXPENSE RESULTING FROM THE USE OR MISUSE OF THIS PRODUCT ARE LIMITED TO THOSE EXPRESSED IN THIS LIMITED WARRANTY.

THIS LIMITED WARRANTY GIVES PURCHASER SPECIFIC LEGAL RIGHTS, AND PURCHASER MAY ALSO HAVE OTHER RIGHTS, WHICH VARY FROM STATE TO STATE. SOME STATES DO NOT ALLOW DISCLAIMERS OF OR LIMITATIONS ON IMPLIED WARRANTIES OR THE EXCLUSION OR LIMITATIONS OF INCIDENTAL OR CONSEQUENTIAL DAMAGES, SO THE ABOVE DISCLAIMER AND LIMITATION MAY NOT APPLY TO PURCHASER