

PICKUP LIFTS

PALFINGER

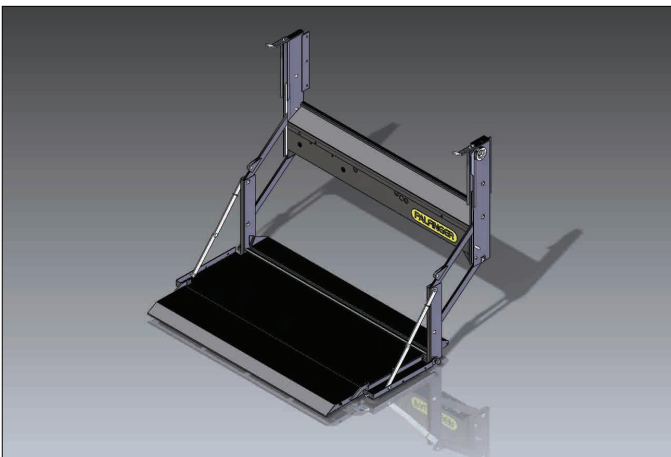
LIFETIME EXCELLENCE

A MULTI-FUNCTIONAL WORKHORSE



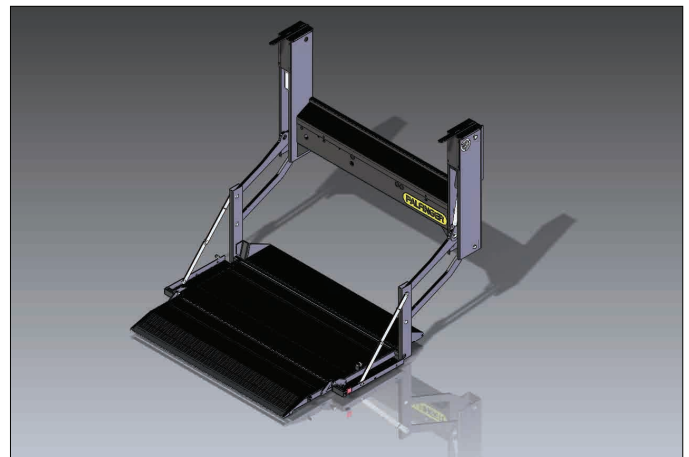
RELIABILITY AND VERSATILITY ARE OFFERED WITH PICKUP LIFTS IN BOTH CABLE AND DIRECT LIFT STYLES.





CABLE LIFT

- Serviceability - All hydraulics and key electrical connections are enclosed and protected from dirt and moisture.
- Overload protection - Built in overload protection through relief valves in hydraulic pump.
- Surge protection - Standard 150 amp circuit breaker protects chassis electronics.
- Hitch - Pickup Lift does not extend below the chassis frame, allowing for receiver-type hitch use.
- Reduced maintenance - Maintenance free bushings
- Controllability - Standard toggle switches allow for complete control of liftgate through full range of travel.



DIRECT LIFT

- Single point gate release - Dual latching passenger side single release handle that unlatches both sides of the platform.
- Lift to weight - Increased lift to weight ratio compared to similar cable liftgates.
- Ease of loading - Platform easily lowers for dock loading.
- Hitch - Pickup Lift does not extend below the chassis frame, allowing for receiver-type hitch use.
- E-Coat - Corrosion resistant protection
- Installation - Bolt on installation





PALFINGER

STANDARD FEATURES



SINGLE POINT PLATFORM RELEASE*

Dual latching passenger side single release handle that unlatches both sides of the platform



150-AMP

Factory supplied 150 amp circuit breaker to protect your liftgate and vehicle's electrical system.



WARRANTY

Industry leading 3 year warranty on power unit.



MAINTENANCE-FREE

Self-lubricating bushings at all pivot points and large pulleys for reduced cable wear.



WEATHER PROTECTION

All hydraulics and key electrical connections are enclosed and protected from dirt and moisture.



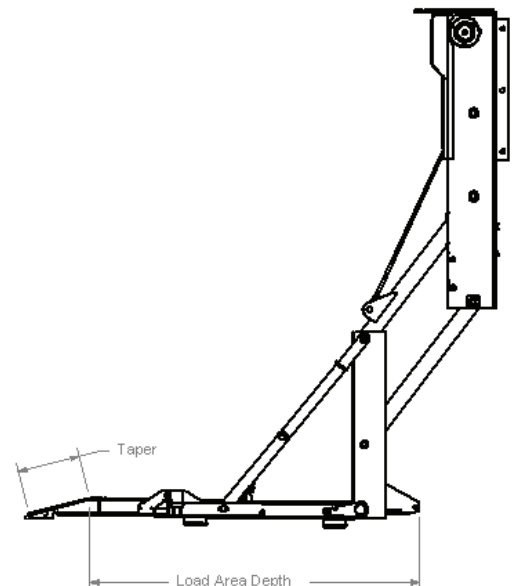
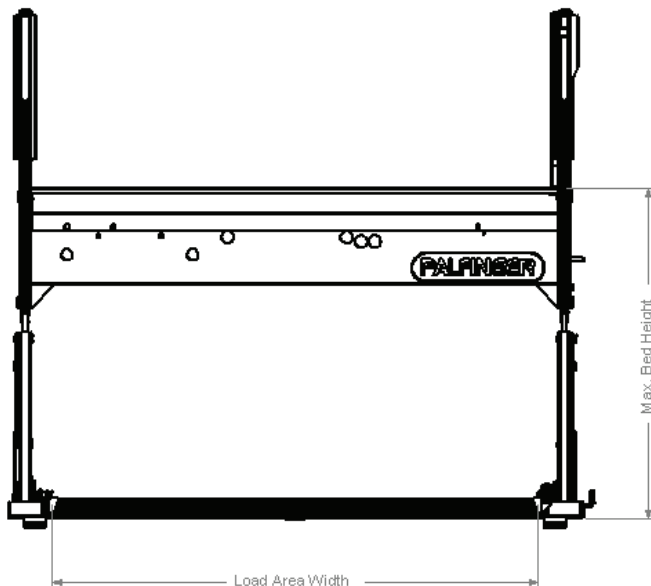
RECEIVER HITCH CLEARANCE

Pickup Lift does not extend below the chassis frame, allowing for receiver-type hitch use.

CABLE LIFTS

Application	Capacity	Model	Max Bed Height	Platform Load Area		Platform Load Area	
				Steel Treadplate	Weight	Aluminum	Weight
Service Bodies	1,000 lbs.	E38-48	40"	45" x 27" + 3" Taper	325 lbs.	45" x 38" + 4" Taper **	300 lbs.
Service Bodies	1,000 lbs.	E38-54	40"	51" x 27" + 3" Taper	360 lbs.	51" x 38" + 4" Taper **	325 lbs.
Service Bodies	1,600 lbs.	E46-64SB	46"	62" x 36" + 3" Taper	540 lbs.	52" x 38" + 4" Taper **	485 lbs.
Pickups	1,000 lbs.	E38-54	40"	52" x 36" + 3" Taper	360 lbs.	52" x 38" + 4" Taper **	325 lbs.
Pickups	1,000 lbs.	E38-60	40"	57" x 27" + 3" Taper	355 lbs.	57" x 38" + 4" Taper **	320 lbs.
Pickups	1,000 lbs.	E38-64	40"	62" x 27" + 3" Taper	350 lbs.	62" x 38" + 4" Taper **	315 lbs.
Cargo Van	1,000 lbs.	E38-60FV	40"	57" x 27" + 3" Taper	390 lbs.	57" x 38" + 4" Taper **	370 lbs.
Service Van Stake Bodies	1,000 lbs.	E38-72	40"	68" x 36" + 4" Taper	540 lbs.	68" x 38" + 4" Taper	485 lbs.
Service Van Stake Bodies	1,000 lbs.	E38-78	40"	76" x 36" + 4" Taper	580 lbs.	76" x 38" + 4" Taper	525 lbs.
Service Van Stake Bodies	1,000 lbs.	E38-86	40"	82" x 36" + 4" Taper	590 lbs.	82" x 38" + 4" Taper	530 lbs.
Service Van Stake Bodies	1,300 lbs.	E48-64	48"	62" x 34" + 4" Taper	485 lbs.	62" x 34" + 4" Taper	435 lbs.
Service Van Stake Bodies	1,300 lbs.	E48-72	48"	68" x 34" + 4" Taper	535 lbs.	68" x 34" + 4" Taper	485 lbs.
Service Van Stake Bodies	1,300 lbs.	E48-78	48"	76" x 34" + 4" Taper	625 lbs.	76" x 34" + 4" Taper	565 lbs.
Service Van Stake Bodies	1,300 lbs.	E48-86	48"	82" x 34" + 4" Taper	660 lbs.	82" x 34" + 4" Taper	595 lbs.
Service Van Stake Bodies	1,300 lbs.	E48-91	48"	86" x 34" + 4" Taper	690 lbs.	85" x 34" + 4" Taper	625 lbs.
Service Van Stake Bodies	1,600 lbs.	E50-78	50"	76" x 34" + 4" Taper	690 lbs.	76" x 34" + 4" Taper	625 lbs.
Service Van Stake Bodies	1,600 lbs.	E50-86	50"	82" x 34" + 4" Taper	710 lbs.	82" x 34" + 4" Taper	640 lbs.
Service Van Stake Bodies	1,600 lbs.	E50-91	50"	86" x 34" + 4" Taper	720 lbs.	86" x 34" + 4" Taper	650 lbs.
Dump Bodies	1,300 lbs.	E48-78DE	48"	76" x 34"	655 lbs.	76" x 34"	590 lbs.
Dump Bodies	1,300 lbs.	E48-86DE	48"	82" x 34"	665 lbs.	82" x 34"	600 lbs.
Dump Bodies	1,300 lbs.	E48-91DE	48"	86" x 34"	690 lbs.	86" x 34"	625 lbs.
Dump Bodies	1,600 lbs.	E50-78DE	50"	76" x 34"	720 lbs.	76" x 34"	650 lbs.
Dump Bodies	1,600 lbs.	E50-86DE	50"	82" x 34"	735 lbs.	82" x 34"	665 lbs.
Dump Bodies	1,600 lbs.	E50-91DE	50"	86" x 34"	740 lbs.	86" x 34"	670 lbs.

Note (**): Extruded aluminum

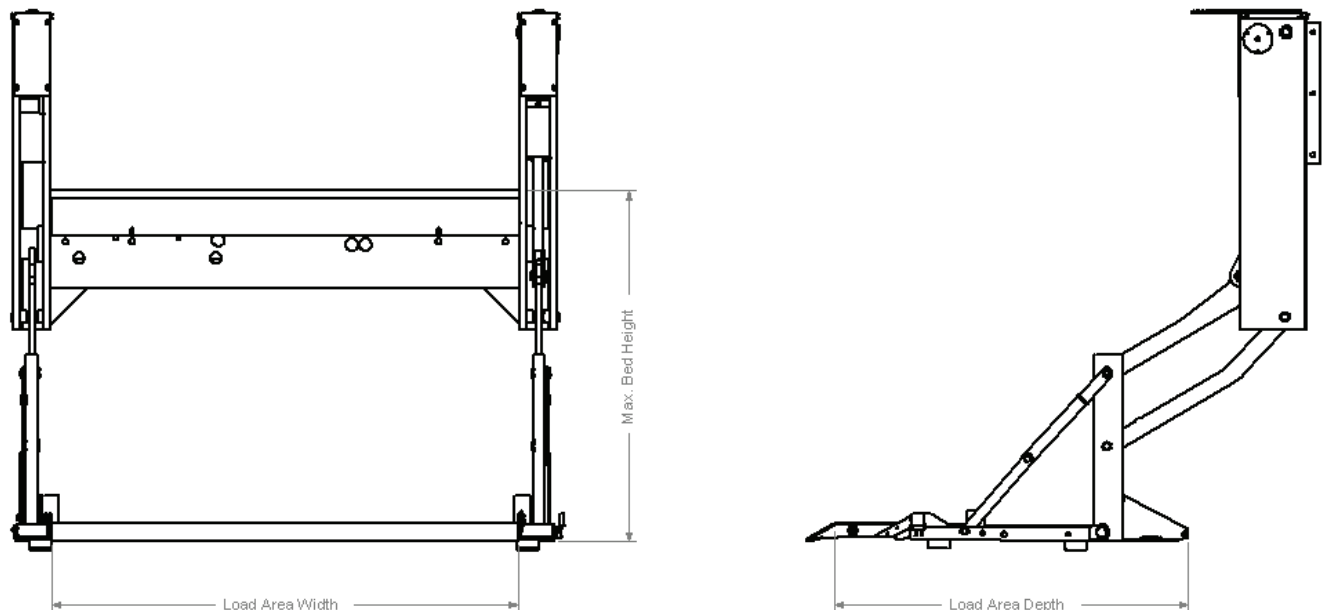




DIRECT LIFTS

Application	Capacity	Model	Max Bed Height	Platform Load Area		Platform Load Area	
				Steel Treadplate	Weight	Aluminum	Weight
Service Bodies	1,300 lbs.	EDL-54SB	40"	46" x 30" + 3" Taper	415 lbs.	46" x 41" + 4" Taper **	375 lbs.
Service Bodies	1,300 lbs.	EDL-60SB	40"	52" x 30" + 3" Taper	490 lbs.	52" x 41" + 4" Taper **	445 lbs.
Pickups	1,300 lbs.	EDL-60	40"	52" x 30" + 3" Taper	410 lbs.	52" x 41" + 4" Taper **	370 lbs.
Pickups	1,300 lbs.	EDL-64	40"	57" x 30" + 3" Taper	490 lbs.	57" x 41" + 4" Taper **	385 lbs.
Service Van Stake Bodies	1,600 lbs.	EDL16-78	50"	76" x 36" + 4" Taper	810 lbs.	76" x 36" + 4" Taper	730 lbs.
Service Van Stake Bodies	1,600 lbs.	EDL16-86	50"	82" x 36" + 4" Taper	820 lbs.	82" x 36" + 4" Taper	740 lbs.

Note (**): Extruded aluminum



POPULAR OPTIONS



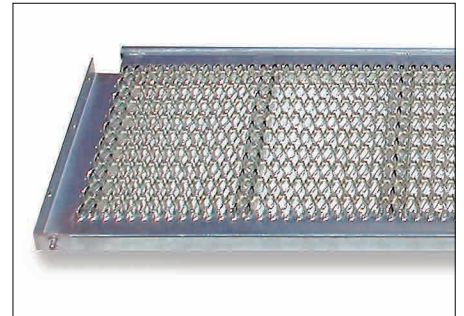
ZINC ELECTROPLATING

Zinc plating is affordable, durable and offers excellent corrosion resistance, combined with a bright and attractive finish. Safety grate option shown.



RHINO LININGS' TUFFSTUFF®

Sprayed-on tuff Stuff® polyurethane provides a durable watertight and airtight bond with the surface of your platform.



GRIP STRUT® PLATFORM

Safety grated airflow platform, ideal for tire bodies.



WIRED REMOTE

Remote push-button control with seven foot cord.



FOLD-OUT EXTENSION - 38" & EDL

This converts the 27" to a 36" deep platform on the 38" series & converts the 30" to a 39" deep platform on the EDL series.



LIGHTING

L-3 Light kit
• 2 brackets
• 6 lights

L-2 Light kit
• 2 brackets
• 4 lights

E-COAT PROTECTION



Every Pickup Lift is cleaned in a series of four baths then pre-treated with a phosphate conversion coating to prepare the lift for electro coating.



After the zinc bath, the Pickup Lift is fully immersed in a high gloss black acrylic paint bath where direct current is applied between the steel and counter electrodes.



Once painted, the Pickup Lift is rinsed to recycle any undeposited paint, achieving nearly 100% paint efficiency for an environmentally friendly process.





ADDITIONAL PALFINGER LIFTGATES



CityFix - The interior mounted solution for panel van applications

The CityFix accommodates the different bumpers on the Sprinter. The spare tire can stay in place. The longer platforms require more interior height in truck

Capacities: 1100 lbs.



MiniFix - The external mounted solution for panel van applications.

The MiniFix accommodates the standard bumper, not the optional step bumper on the Sprinter. The spare tire has to be relocated from under the vehicle.

Capacities: 1100 and 1320 lbs.



ILMplus

The ILM^{plus} is a cutting edge, simple and robust product designed by our German & American engineering team. The combination of an excellent design coupled with US manufacturing, service and support elevates the ILM^{plus} to the next level of Medium Duty Rail Lifts.

Capacities: 1600, 2000, 2500, 3000 lbs.



OMAHA STANDARD PALFINGER
3501 S. 11th Street
COUNCIL BLUFFS, IA 51501
T. 1 800 279 2201
F. 1 712 328 8383

WWW.PALFINGER.COM



PALFINGER reserves the right to modify, change or revise published specifications and furnish products so altered without prior notice.
Note (*): Not applicable on all models.



PPUL 06.13