



Skid Manual

(V-Box, Combo, Anti-Ice, Leg Kits)

Service and Parts Manual



MONROE TRUCK EQUIPMENT

1051 W. 7th Street

Monroe, WI 53566

Phone: 608-328-8127


Fax: 608-329-8488

TABLE OF CONTENTS

SAFETY INSTRUCTIONS	Page 2
MAINTENANCE INSTRUCTIONS	Page 3
TORQUE CHART	Page 3
GENERAL INFORMATION	Page 4
REPLACEMENT PARTS	Page 6-19
HOW TO ORDER PARTS	Page 5
RETURN POLICY	Page 5
WARRANTY INFORMATION	Page 20

SAFETY INSTRUCTIONS

- Read all installation, safety and maintenance instructions completely before operating this equipment
- Keep all personnel clear of moving parts while equipment is being operated.
- Do not operate equipment in need of maintenance! Repair immediately!
- While operating this equipment, use common sense, use caution, be alert and be safety-conscious.



! DANGER

AVOID HIGH-PRESSURE FLUIDS

Escaping fluid under pressure can penetrate the skin causing serious injury.

Avoid the hazard by relieving pressure before disconnecting hydraulic or other lines. Tighten all connections before applying pressure.

Search for leaks with a piece of cardboard. Protect hands and body from high pressure fluids.

If an accident occurs, see a doctor immediately. Any fluid injected into the skin must be surgically removed within a few hours or gangrene may result.

"IF IT CAN'T BE DONE SAFELY, DON'T DO IT!"

Monroe Truck Equipment safety slogan

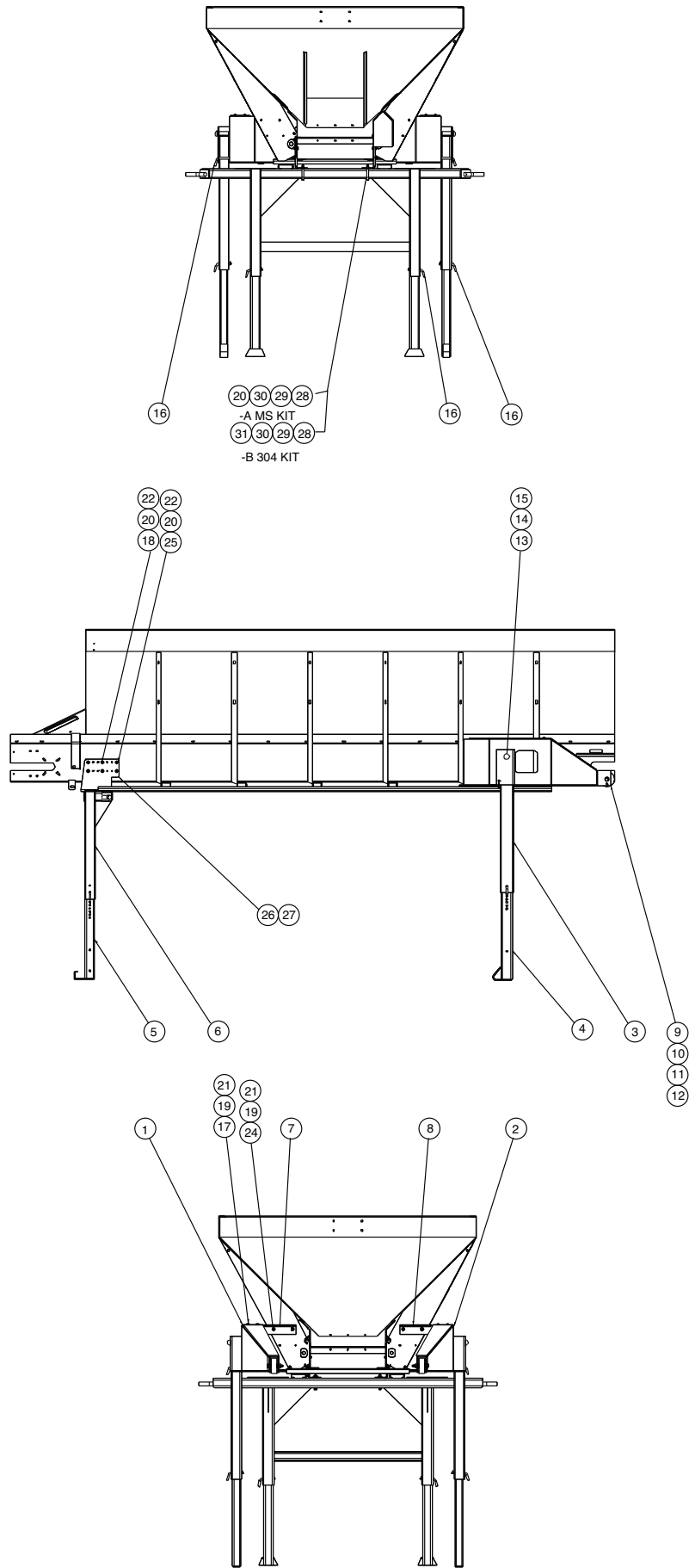
MAINTENANCE INSTRUCTIONS

GENERAL INFORMATION

- Location descriptions are noted in direction of travel. (i.e. front, rear, left and right.)
- Delivery of replacement parts is subject to our sales delivery terms.
- Use only **Monroe Truck Equipment** O.E.M. replacement parts. Failure to do so will void warranty.
- Replacement parts listed in this manual reflect our most common items. If you do not find the part you require, please call your distributor.
- **Monroe Truck Equipment** reserves the right to make revisions or alterations to this parts manual.

NOTES

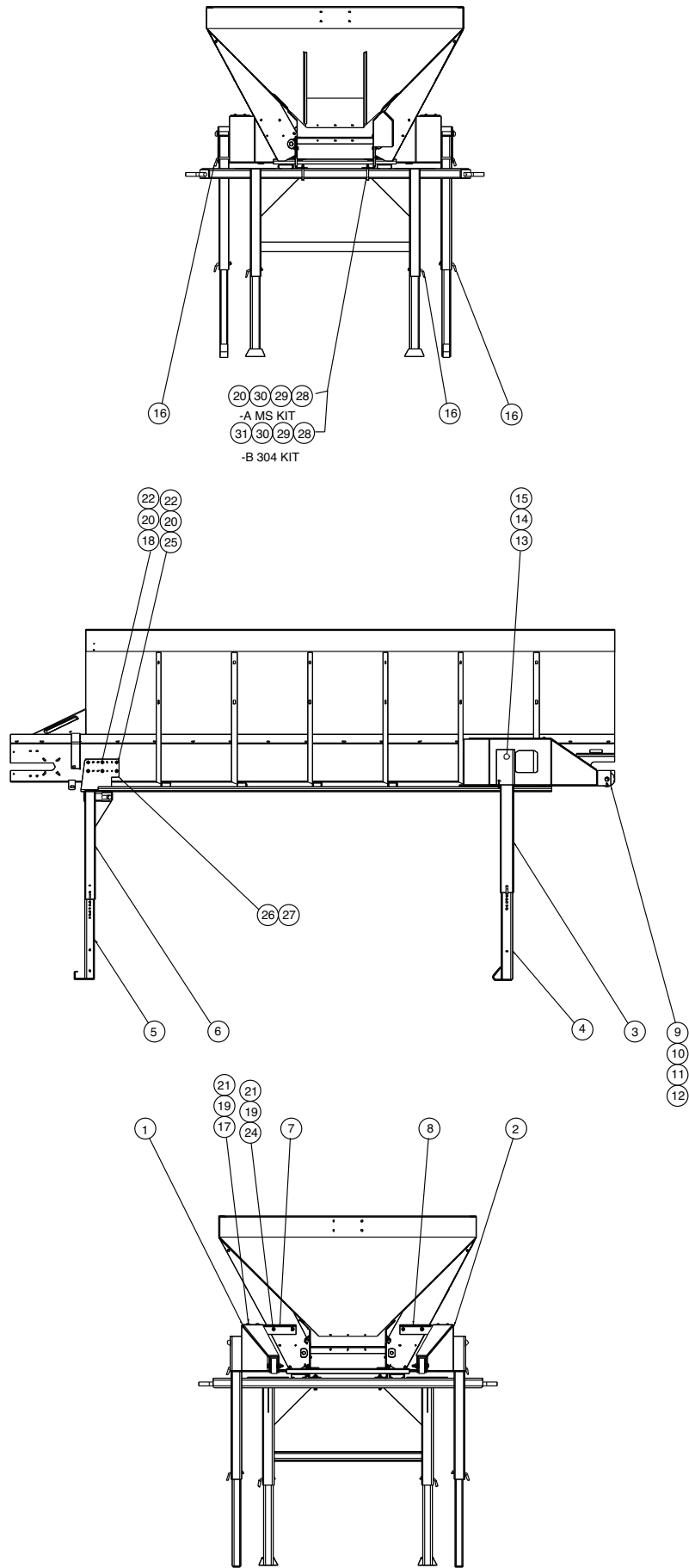
00054632 LEG KIT, SELF LOADING



00054632-A LEG KIT, SELF LOADING, MS

Item	Qty.	Part Number	Description
1	1	00058800-A	LEG MOUNT WELDMENT, FRONT, RH
2	1	00058801-A	LEG MOUNT WELDMENT, FRONT, LH
3	2	00085100-A	LEG WELDMENT, FRONT, UPPER
4	2	00085102-A	LEG WELDMENT, FRONT, LOWER
5	2	00085104-A	LEG WELDMENT, REAR
6	1	00099489-A	LEG WELDMENT, RR, UPPER
7	1	00058984-A	MOUNTING ANGLE, LEG MOUNT, FRONT, RH
8	1	00058985-A	MOUNTING ANGLE, LEG MOUNT, FRONT, LH
9	2	05050451	WHEEL, CAST IRON, .625 X 1.875
10	2	05010747	BOLT, .625-11 X 4, HHCS, ZINC
11	4	05021017	WASHER, .625, FLAT, MIL-CARB, SAE
12	2	05020837	NUT, .625-11, GC, TOP LOCK, C&W
13	2	05021314	WASHER, 1, FLAT, ZINC
14	2	05022002	PIN, #8, HAIR, 7/8" -1"
15	2	05022077	PIN, 1 X 4.5, BUTTON HEAD, ZINC
16	6	05022136	PIN, .5 X 4.50, GRIP BENT, ZINC
17	4	05010644	BOLT, .375-16 X 1.250, HHCS, ZINC
18	12	05010691	BOLT, .5-13 X 1.50, HHCS, ZINC
19	12	05020898	NUT, .375-16, TOP LOCK, C&W, GRC
20	22	05020847	NUT, .5-13, TOP LOCK,C&W, GR C
21	24	05021307	WASHER, .375, FLAT, ZINC
22	20	05021309	WASHER, .5, FLAT, ZINC
23	2	00028395-A	PIN, TGT LATCH
24	8	05010643	BOLT, .375-16 X 1, HHCS, ZINC
25	4	05010692	BOLT, .5-13 X 1.75, HHCS, ZINC
26	1	00099494-A	ATTACHMENT PLATE WELDMENT, RR LEG, RH
27	1	00099495-A	ATTACHMENT PLATE WELDMENT, RR LEG, LH
28	2	05017039	U-BOLT, SQ .5-13, 3.063 X 4.750, ZINC, HARDENED
29	2	05010702	BOLT, .5-13 X 4.50, G8, HHCS, ZINC
30	6	05021005	WASHER, .5, FLAT, MIL-CARB, SAE, ZINC

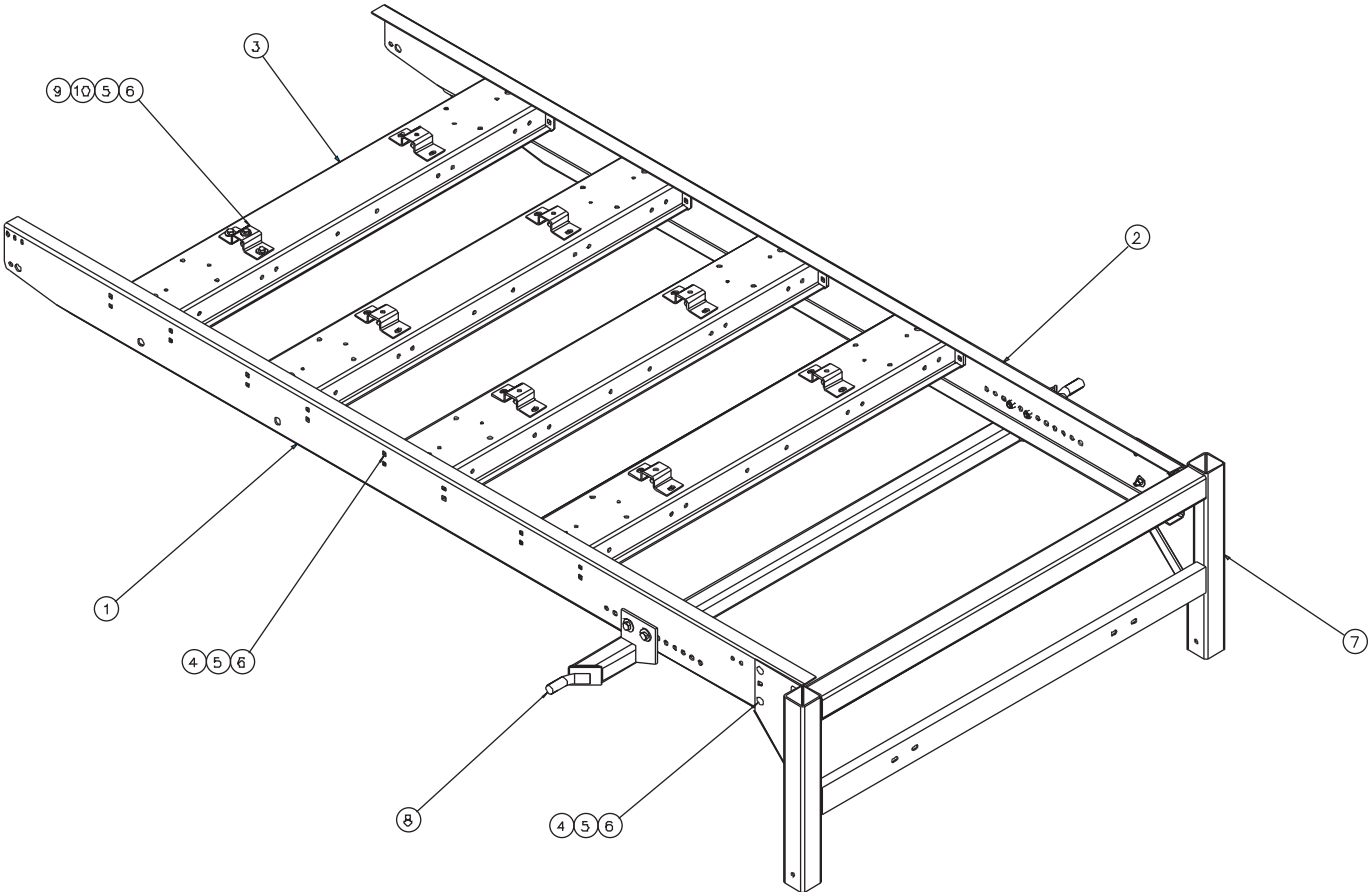
00054632 LEG KIT, SELF LOADING



00054632-B LEG KIT, SELF LOADING, SST

Item	Qty.	Part Number	Description
1	1	00058800-B	LEG MOUNT WELDMENT, FRONT, RH
2	1	00058801-B	LEG MOUNT WELDMENT, FRONT, LH
3	2	00085100-B	LEG WELDMENT, FRONT, UPPER
4	2	00085102-B	LEG WELDMENT, FRONT, LOWER
5	2	00085104-B	LEG WELDMENT, REAR
6	1	00099489-B	LEG WELDMENT, RR, UPPER
7	1	00058984-B	MOUNTING ANGLE, LEG MOUNT, FRONT, RH
8	1	00058985-B	MOUNTING ANGLE, LEG MOUNT, FRONT, LH
9	2	05050451	WHEEL, CAST IRON, .625 X 1.875
10	2	05010747	BOLT, .625-11 X 4, HHCS, ZINC
11	4	05021017	WASHER, .625, FLAT, MIL-CARB, SAE
12	2	05020837	NUT, .625-11, GC, TOP LOCK, C&W
13	2	05021314	WASHER, 1, FLAT, ZINC
14	2	05022002	PIN, #8, HAIR, 7/8" -1"
15	2	05022077	PIN, 1 X 4.5, BUTTON HEAD, ZINC
16	6	05022136	PIN, .5 X 4.50, GRIP BENT, ZINC
17	4	05016049	BOLT, .375-16 X 1.250, HHCS, SST
18	12	05016096	BOLT, .5-13 X 1.50, HHCS, SST
19	12	05020891	NUT, .375-16, NYLON LOCK, SST
20	22	05020908	NUT, .5-13, NYLON LOCK, SST
21	24	05021390	WASHER, .375, FLAT, SST
22	20	05021391	WASHER, .5, FLAT, SST
23	2	00028395-B	PIN, TGT LATCH
24	8	05016034	BOLT, .375-16 X 1, HHCS, SST
25	4	05016204	BOLT, .5-13 X 1.75, HHCS, SST
26	1	00099494-B	ATTACHMENT PLATE WELDMENT, RR LEG, RH
27	1	00099495-B	ATTACHMENT PLATE WELDMENT, RR LEG, LH
28	2	05017039	U-BOLT, SQ .5-13, 3.063 X 4.750, ZINC, HARDENED
29	2	05010702	BOLT, .5-13 X 4.50, G8, HHCS, ZINC
30	6	05021005	WASHER, .5, FLAT, MIL-CARB, SAE, ZINC
31	6	05020847	NUT, .5-13, TOP LOCK,C&W, GR C

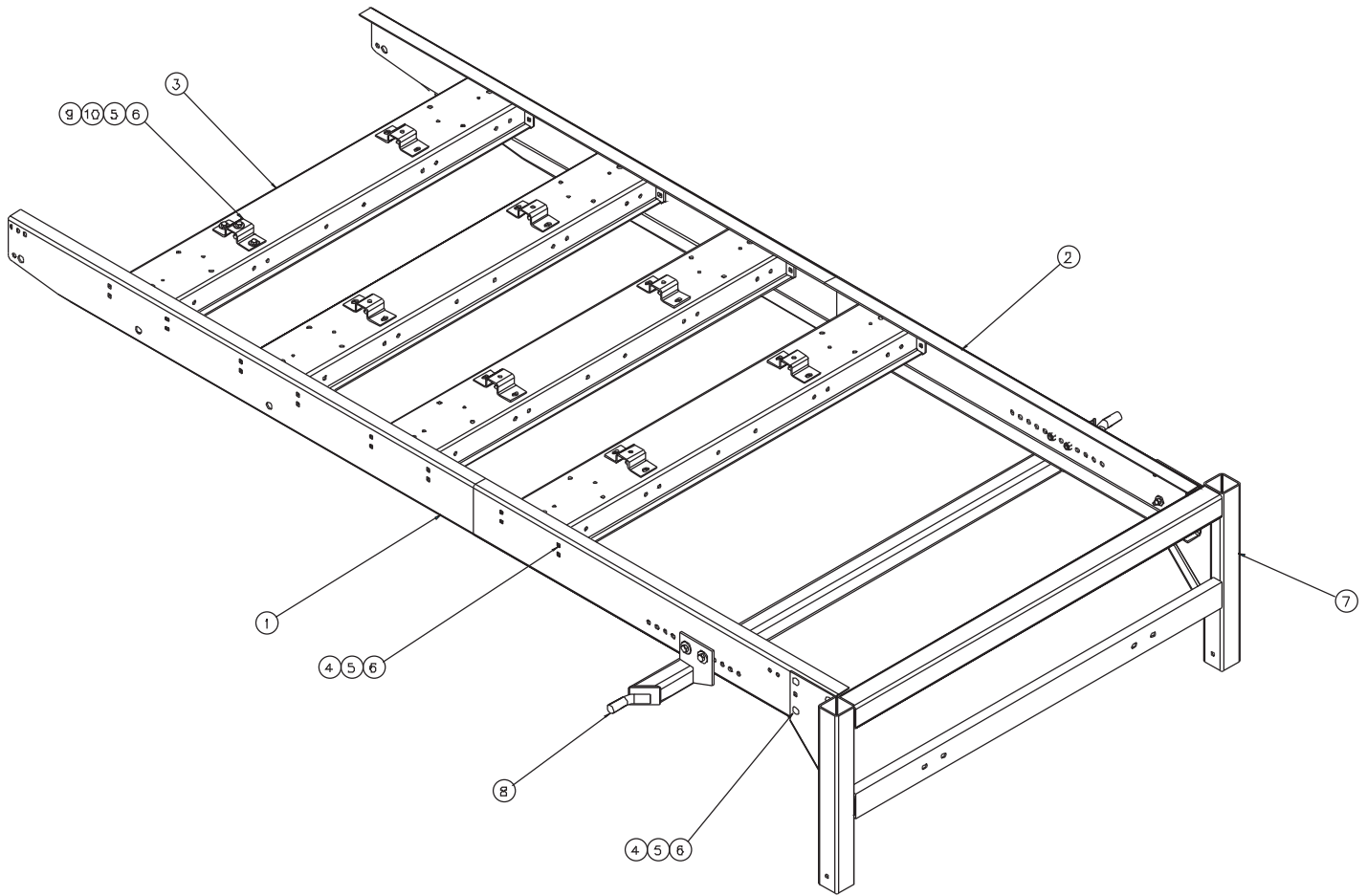
00085046 SKID ASSEMBLY, MV/MSV, 9', STD V-BOX, INBD SPINNER



00085046 SKID ASSEMBLY, MV/MSV, 9', STD V-BOX, INBD SPINNER

ITEM	QTY	PART #	DESCRIPTION
1	1	00086427-A	Rail Weldment, MV/MSV, 9', LH, MS
	1	00086427-B	Rail Weldment, MV/MSV, 9', LH, 304, SST
2	1	00086426-A	Rail Weldment, MV/MSV, 9'. RH, MS
	1	00086426-B	Rail Weldment, MV/MSV, 9'. RH, 304, SST
3	4	00085173-A	Cross Chan Weldment, MV/MSV, MS
	4	00085173-B	Cross Chan Weldment, MV/MSV, 304, SST
4	40	05014042	Bolt, ½-13 x 1½, G5, Carriage, Zinc
	40	05016803	Bolt, ½-13 x 1½, Carriage, SST
5	80	05021005	Washer, ½, Flat, Mil-Carb, STD
	80	05021391	Washer, ½, Flat, SST
6	64	05020847	Nut, ½-13, GC, Toplock, C&W
	64	05020908	Nut, ½-13, Nylon Lock, SST
7	1	00085030-A	Leg Weldment, Rear, Bolt-Together, MS
	1	00085030-B	Leg Weldment, Rear, Bolt-Together, 304, SST
8	1	00082661-A	Latch Kit, TGT, MS
	1	00082661-B	Latch Kit, TGT, 304, SST
9	8	00085174-A	Bracket, Mounting, MS
	8	00085174-B	Bracket, Mounting, 304, SST
10	24	05010691	Bolt, ½-13 x 1½, G8, HHCS, Zinc
	24	05016096	Bolt, ½-13 x 1½, HHCS, SST

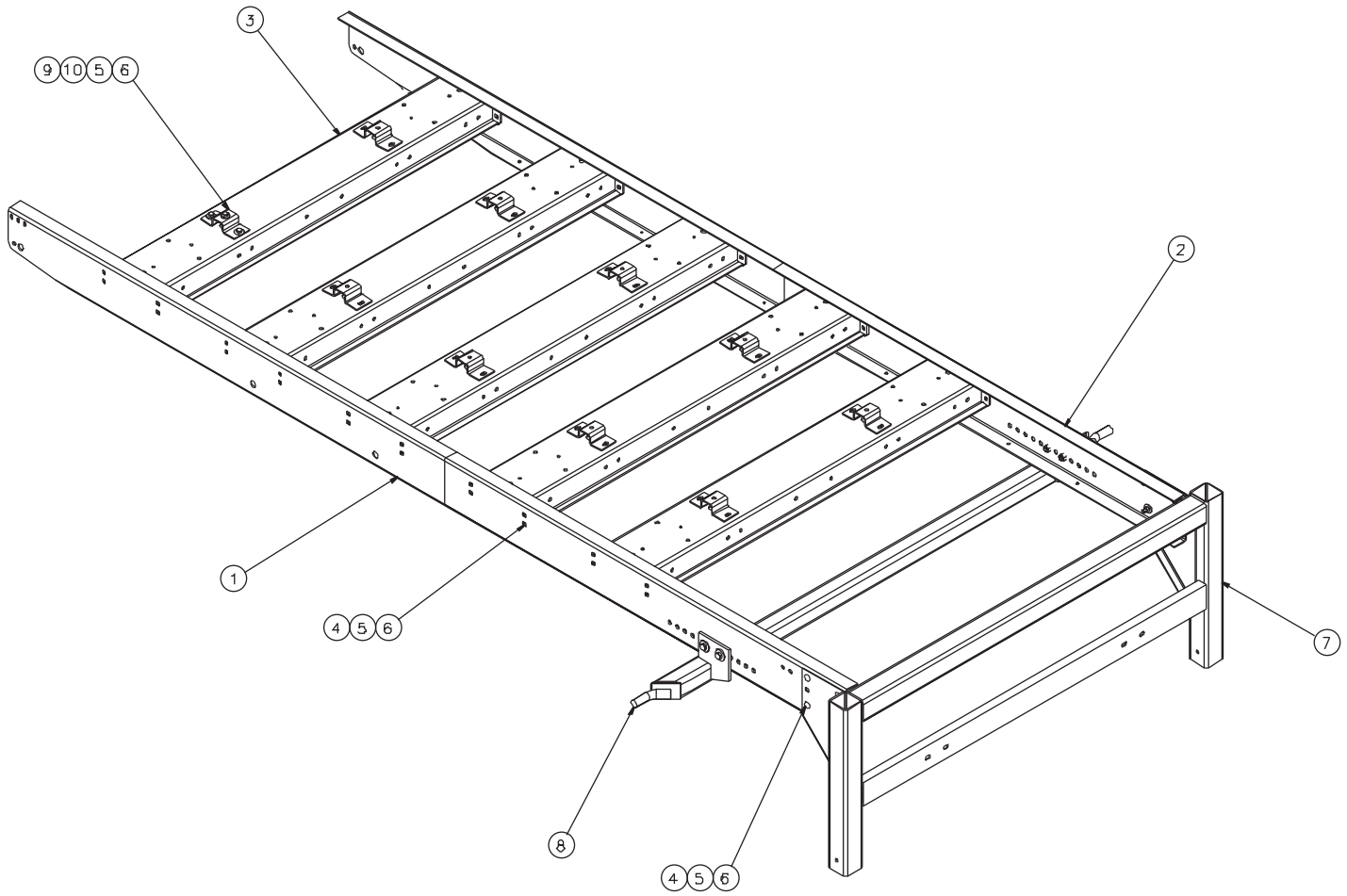
00085038 SKID ASSEMBLY, MV/MSV, 10', STD V-BOX, INBD SPINNER



00085038 SKID ASSEMBLY, MV/MSV, 10', STD V-BOX, INBD SPINNER

ITEM	QTY	PART #	DESCRIPTION
1	1	00085075-A	Rail Weldment, MV/MSV, 10', LH, MS
	1	00085075-B	Rail Weldment, MV/MSV, 10', LH, 304, SST
2	1	00085074-A	Rail Weldment, MV/MSV, 10'. RH, MS
	1	00085074-B	Rail Weldment, MV/MSV, 10'. RH, 304, SST
3	4	00085173-A	Cross Chan Weldment, MV/MSV, MS
	4	00085173-B	Cross Chan Weldment, MV/MSV, 304, SST
4	40	05014042	Bolt, ½-13 x 1½, G5, Carriage, Zinc
	40	05016803	Bolt, ½-13 x 1½, Carriage, SST
5	80	05021005	Washer, ½, Flat, Mil-Carb, STD
	80	05021391	Washer, ½, Flat, SST
6	64	05020847	Nut, ½-13, GC, Toplock, C&W
	64	05020908	Nut, ½-13, Nylon Lock, SST
7	1	00085030-A	Leg Weldment, Rear, Bolt-Together, MS
	1	00085030-B	Leg Weldment, Rear, Bolt-Together, 304, SST
8	1	00082661-A	Latch Kit, TGT, MS
	1	00082661-B	Latch Kit, TGT, 304, SST
9	8	00085174-A	Bracket, Mounting, MS
	8	00085174-B	Bracket, Mounting, 304, SST
10	24	05010691	Bolt, ½-13 x 1½, G8, HHCS, Zinc
	24	05016096	Bolt, ½-13 x 1½, HHCS, SST

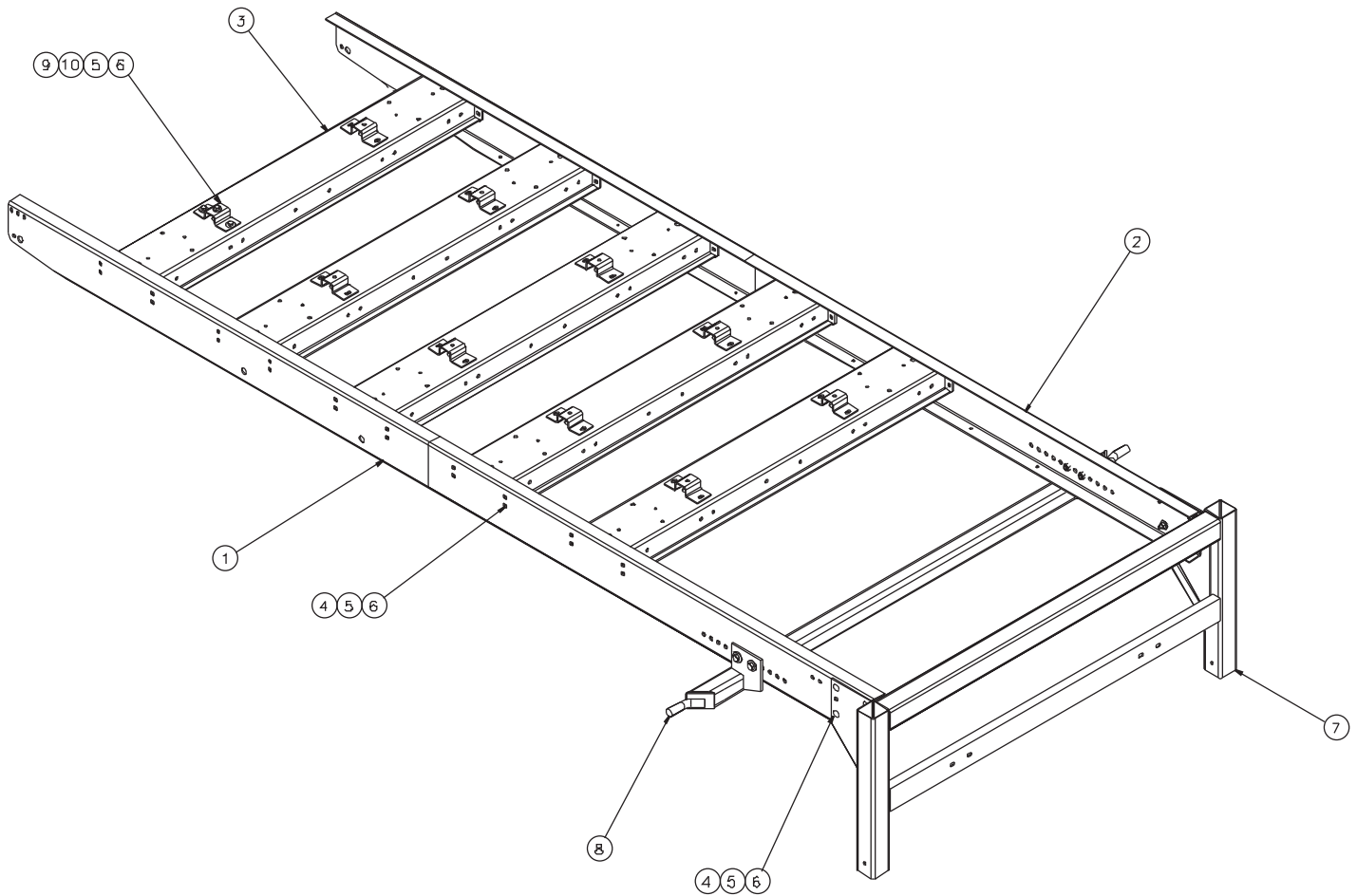
00085068 SKID ASSEMBLY, MV/MSV, 11', STD V-BOX, INBD SPINNER



00085068 SKID ASSEMBLY, MV/MSV, 11', STD V-BOX, INBD SPINNER

ITEM	QTY	PART #	DESCRIPTION
1	1	00085067-A	Rail Weldment, MV/MSV, 11', LH, MS
	1	00085067-B	Rail Weldment, MV/MSV, 11', LH, 304, SST
2	1	00085066-A	Rail Weldment, MV/MSV, 11'. RH, MS
	1	00085066-B	Rail Weldment, MV/MSV, 11'. RH, 304, SST
3	5	00085173-A	Cross Chan Weldment, MV/MSV, MS
	5	00085173-B	Cross Chan Weldment, MV/MSV, 304, SST
4	48	05014042	Bolt, ½-13 x 1½, G5, Carriage, Zinc
	48	05016803	Bolt, ½-13 x 1½, Carriage, SST
5	98	05021005	Washer, ½, Flat, Mil-Carb, STD
	98	05021391	Washer, ½, Flat, SST
6	78	05020847	Nut, ½-13, GC, Toplock, C&W
	78	05020908	Nut, ½-13, Nylon Lock, SST
7	1	00085030-A	Leg Weldment, Rear, Bolt-Together, MS
	1	00085030-B	Leg Weldment, Rear, Bolt-Together, 304, SST
8	1	00082661-A	Latch Kit, TGT, MS
	1	00082661-B	Latch Kit, TGT, 304, SST
9	10	00085174-A	Bracket, Mounting, MS
	10	00085174-B	Bracket, Mounting, 304, SST
10	30	05010691	Bolt, ½-13 x 1½, G8, HHCS, Zinc
	30	05016096	Bolt, ½-13 x 1½, HHCS, SST

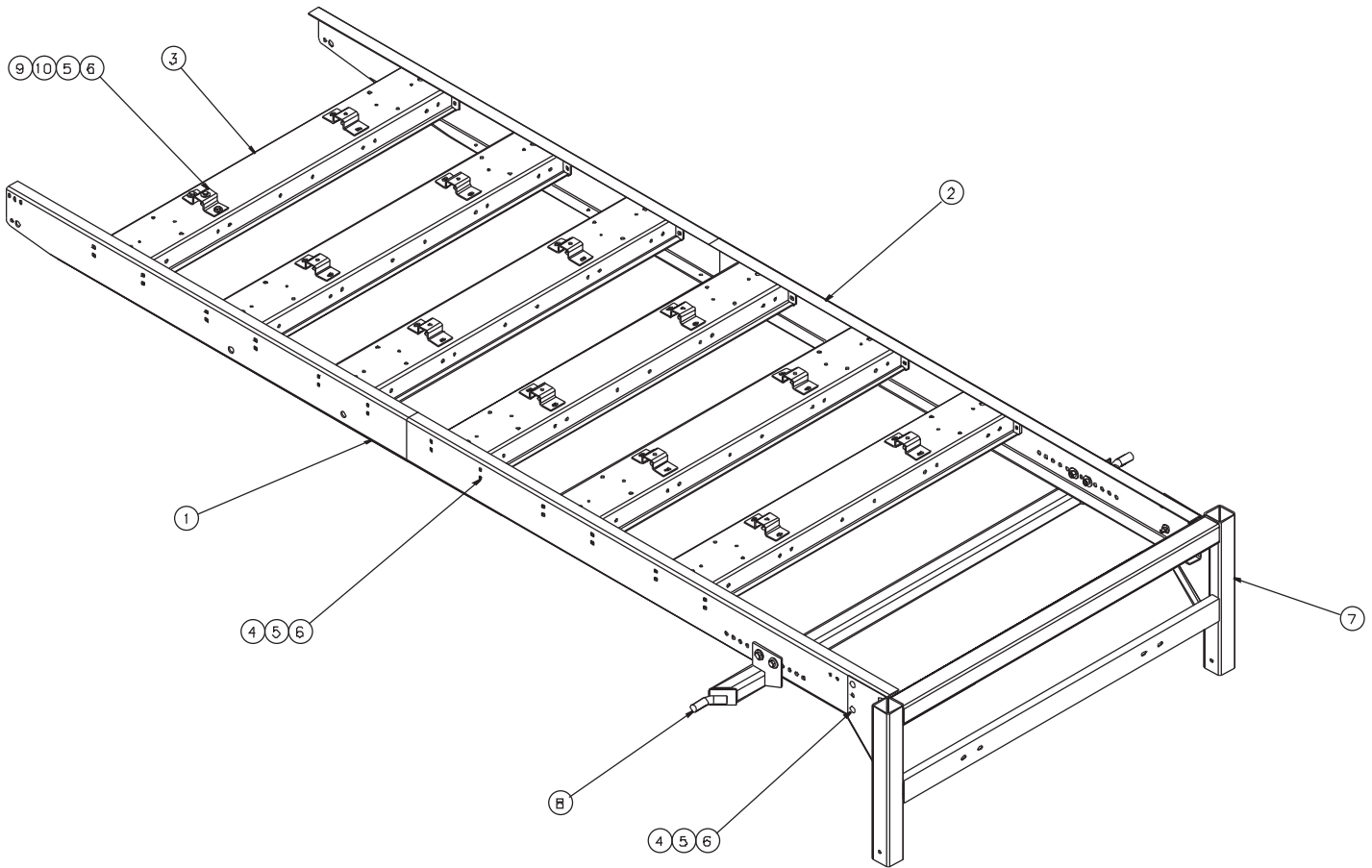
00085039 SKID ASSEMBLY, MV/MSV, 12', STD V-BOX, INBD SPINNER



00085039 SKID ASSEMBLY, MV/MSV, 12', STD V-BOX, INBD SPINNER

ITEM	QTY	PART #	DESCRIPTION
1	1	00085054-A	Rail Weldment, MV/MSV, 12', LH, MS
	1	00085054-B	Rail Weldment, MV/MSV, 12', LH, 304, SST
2	1	00085053-A	Rail Weldment, MV/MSV, 12'. RH, MS
	1	00085053-B	Rail Weldment, MV/MSV, 12'. RH, 304, SST
3	5	00085173-A	Cross Chan Weldment, MV/MSV, MS
	5	00085173-B	Cross Chan Weldment, MV/MSV, 304, SST
4	48	05014042	Bolt, ½-13 x 1½, G5, Carriage, Zinc
	48	05016803	Bolt, ½-13 x 1½, Carriage, SST
5	98	05021005	Washer, ½, Flat, Mil-Carb, STD
	98	05021391	Washer, ½, Flat, SST
6	78	05020847	Nut, ½-13, GC, Toplock, C&W
	78	05020908	Nut, ½-13, Nylon Lock, SST
7	1	00085030-A	Leg Weldment, Rear, Bolt-Together, MS
	1	00085030-B	Leg Weldment, Rear, Bolt-Together, 304, SST
8	1	00082661-A	Latch Kit, TGT, MS
	1	00082661-B	Latch Kit, TGT, 304, SST
9	10	00085174-A	Bracket, Mounting, MS
	10	00085174-B	Bracket, Mounting, 304, SST
10	30	05010691	Bolt, ½-13 x 1½, G8, HHCS, Zinc
	30	05016096	Bolt, ½-13 x 1½, HHCS, SST

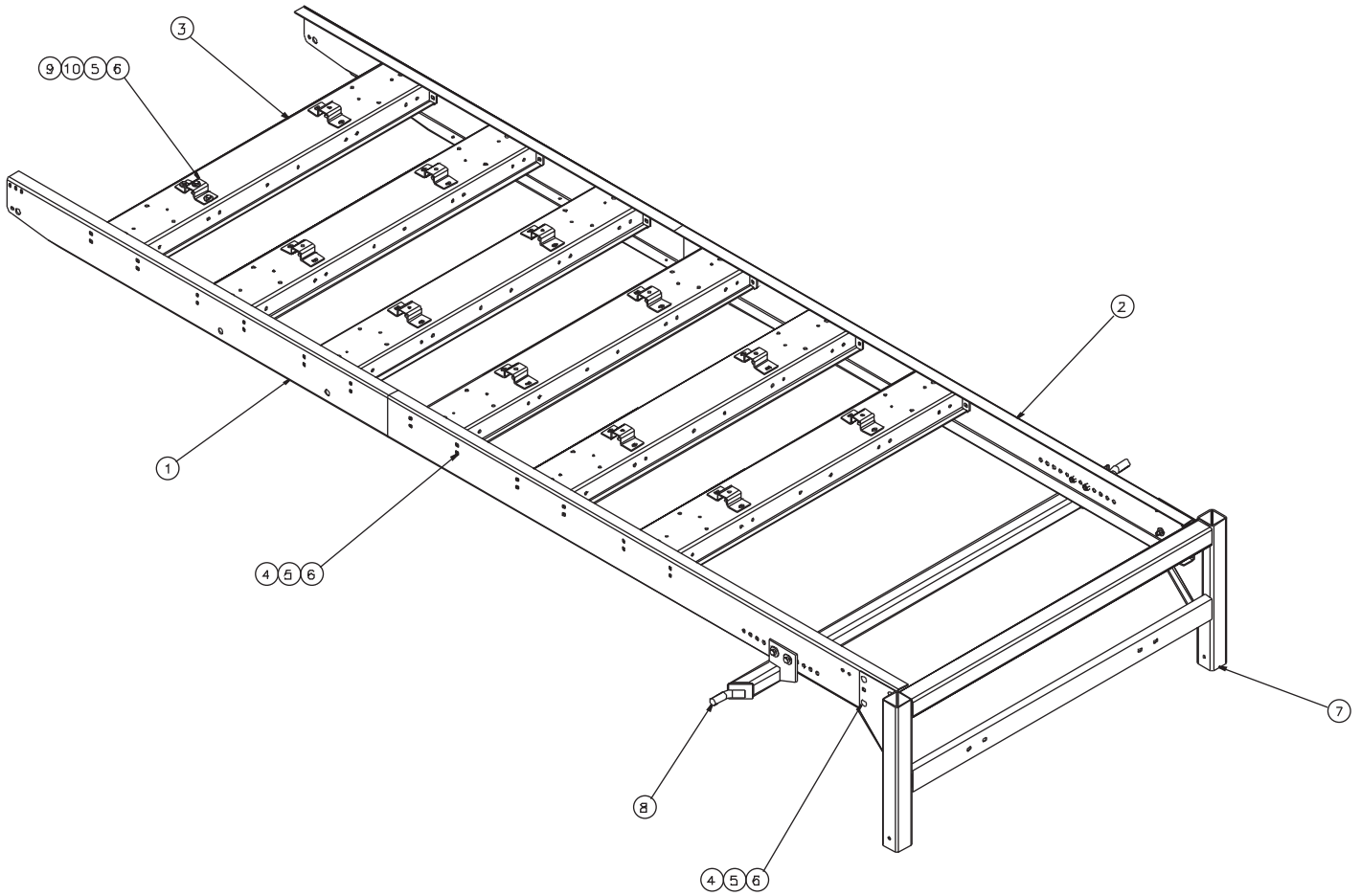
00085031 SKID ASSEMBLY, MV/MSV, 13', STD V-BOX, INBD SPINNER



00085031 SKID ASSEMBLY, MV/MSV, 13', STD V-BOX, INBD SPINNER

ITEM	QTY	PART #	DESCRIPTION
1	1	00085063-A	Rail Weldment, MV/MSV, 13', LH, MS
	1	00085063-B	Rail Weldment, MV/MSV, 13', LH, 304, SST
2	1	00085062-A	Rail Weldment, MV/MSV, 13'. RH, MS
	1	00085062-B	Rail Weldment, MV/MSV, 13'. RH, 304, SST
3	6	00085173-A	Cross Chan Weldment, MV/MSV, MS
	6	00085173-B	Cross Chan Weldment, MV/MSV, 304, SST
4	56	05014042	Bolt, ½-13 x 1½, G5, Carriage, Zinc
	56	05016803	Bolt, ½-13 x 1½, Carriage, SST
5	116	05021005	Washer, ½, Flat, Mil-Carb, STD
	116	05021391	Washer, ½, Flat, SST
6	92	05020847	Nut, ½-13, GC, Toplock, C&W
	92	05020908	Nut, ½-13, Nylon Lock, SST
7	1	00085030-A	Leg Weldment, Rear, Bolt-Together, MS
	1	00085030-B	Leg Weldment, Rear, Bolt-Together, 304, SST
8	1	00082661-A	Latch Kit, TGT, MS
	1	00082661-B	Latch Kit, TGT, 304, SST
9	12	00085174-A	Bracket, Mounting, MS
	12	00085174-B	Bracket, Mounting, 304, SST
10	36	05010691	Bolt, ½-13 x 1½, G8, HHCS, Zinc
	36	05016096	Bolt, ½-13 x 1½, HHCS, SST

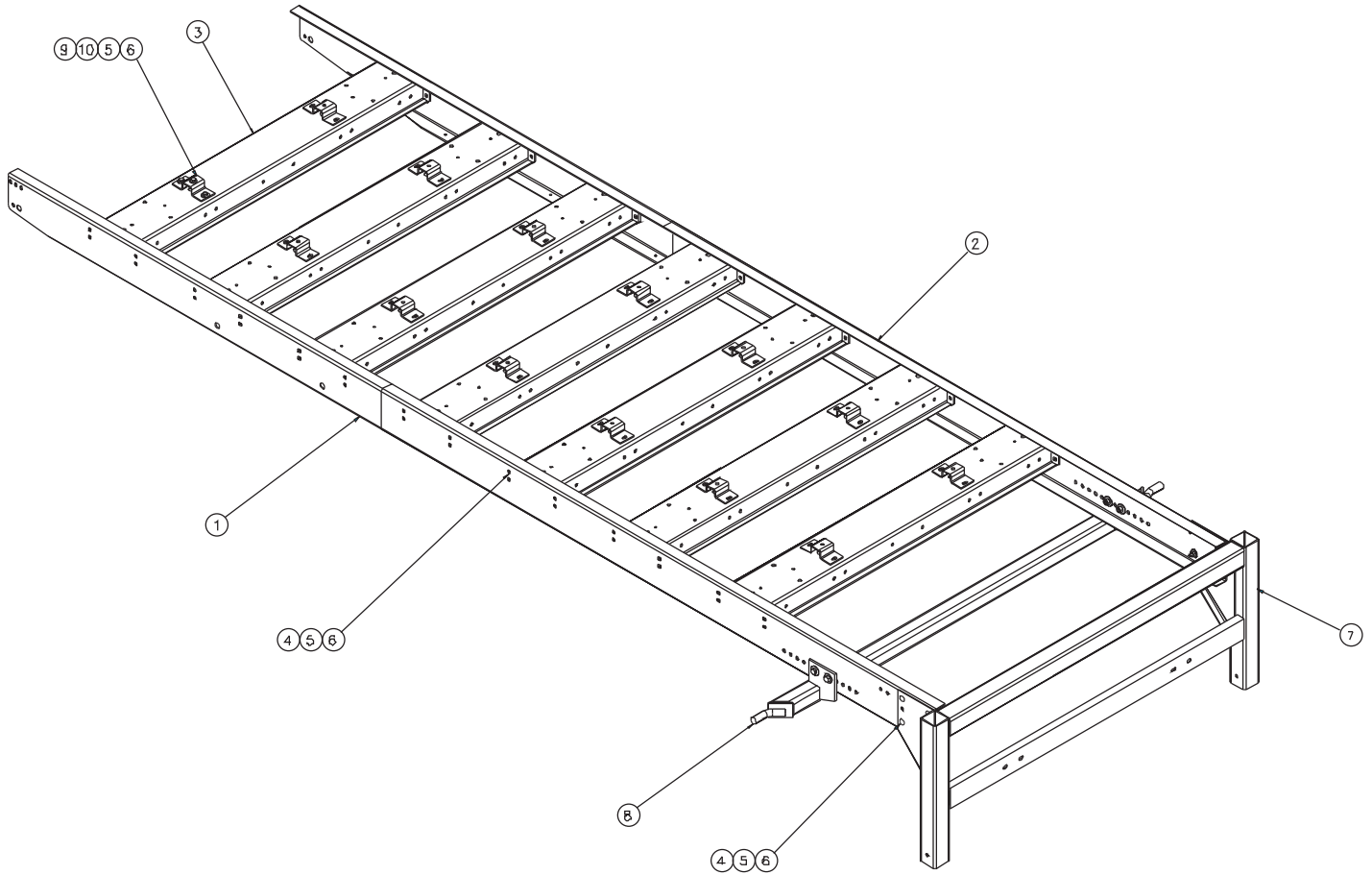
00085040 SKID ASSEMBLY, MV/MSV, 14', STD V-BOX, INBD SPINNER



00085040 SKID ASSEMBLY, MV/MSV, 14', STD V-BOX, INBD SPINNER

ITEM	QTY	PART #	DESCRIPTION
1	1	00085058-A	Rail Weldment, MV/MSV, 14', LH, MS
	1	00085058-B	Rail Weldment, MV/MSV, 14', LH, 304, SST
2	1	00085057-A	Rail Weldment, MV/MSV, 14'. RH, MS
	1	00085057-B	Rail Weldment, MV/MSV, 14'. RH, 304, SST
3	6	00085173-A	Cross Chan Weldment, MV/MSV, MS
	6	00085173-B	Cross Chan Weldment, MV/MSV, 304, SST
4	56	05014042	Bolt, ½-13 x 1½, G5, Carriage, Zinc
	56	05016803	Bolt, ½-13 x 1½, Carriage, SST
5	116	05021005	Washer, ½, Flat, Mil-Carb, STD
	116	05021391	Washer, ½, Flat, SST
6	92	05020847	Nut, ½-13, GC, Toplock, C&W
	92	05020908	Nut, ½-13, Nylon Lock, SST
7	1	00085030-A	Leg Weldment, Rear, Bolt-Together, MS
	1	00085030-B	Leg Weldment, Rear, Bolt-Together, 304, SST
8	1	00082661-A	Latch Kit, TGT, MS
	1	00082661-B	Latch Kit, TGT, 304, SST
9	12	00085174-A	Bracket, Mounting, MS
	12	00085174-B	Bracket, Mounting, 304, SST
10	36	05010691	Bolt, ½-13 x 1½, G8, HHCS, Zinc
	36	05016096	Bolt, ½-13 x 1½, HHCS, SST

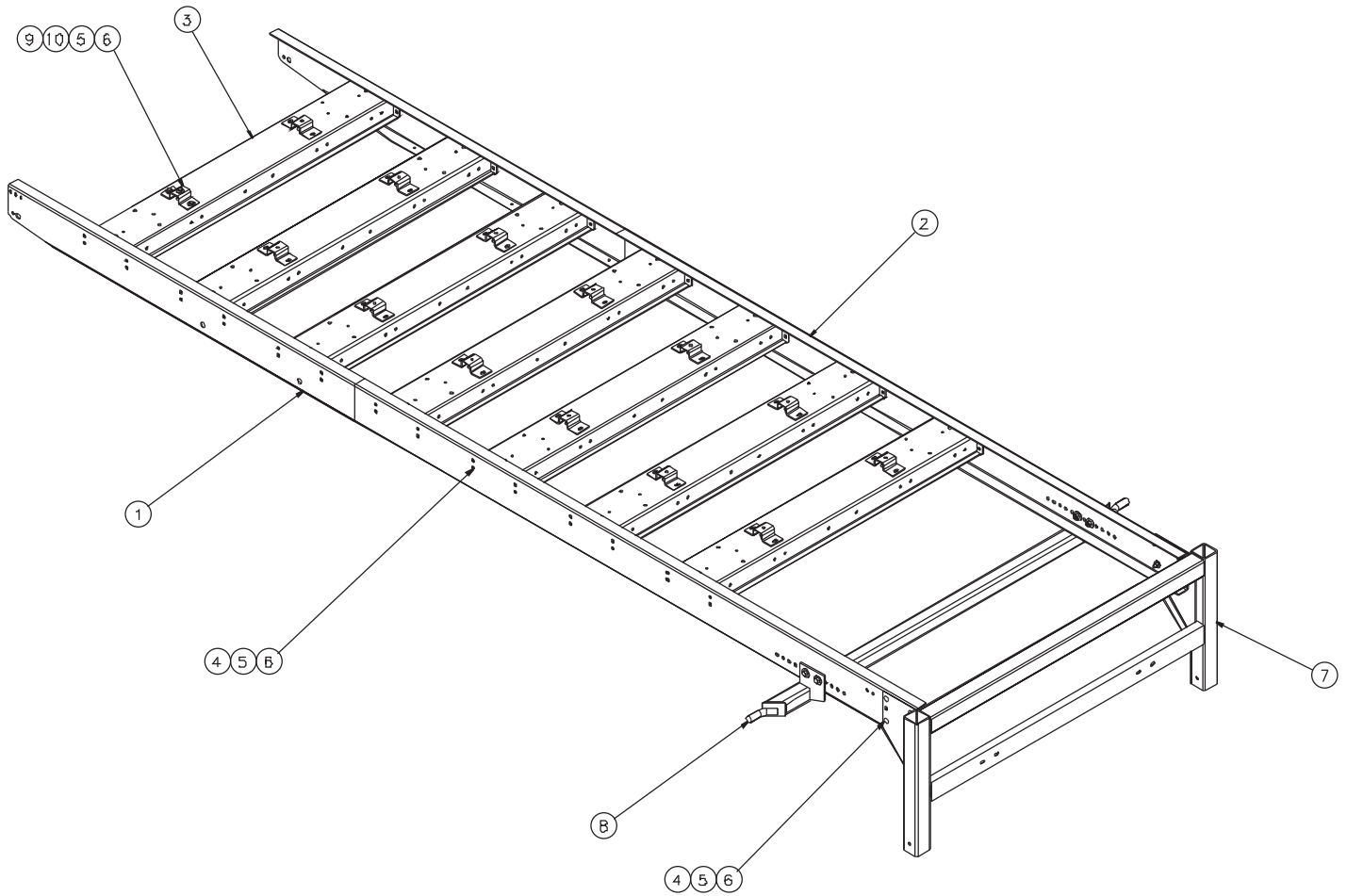
00085041 SKID ASSEMBLY, MV/MSV, 15', STD V-BOX, INBD SPINNER



00085041 SKID ASSEMBLY, MV/MSV, 15', STD V-BOX, INBD SPINNER

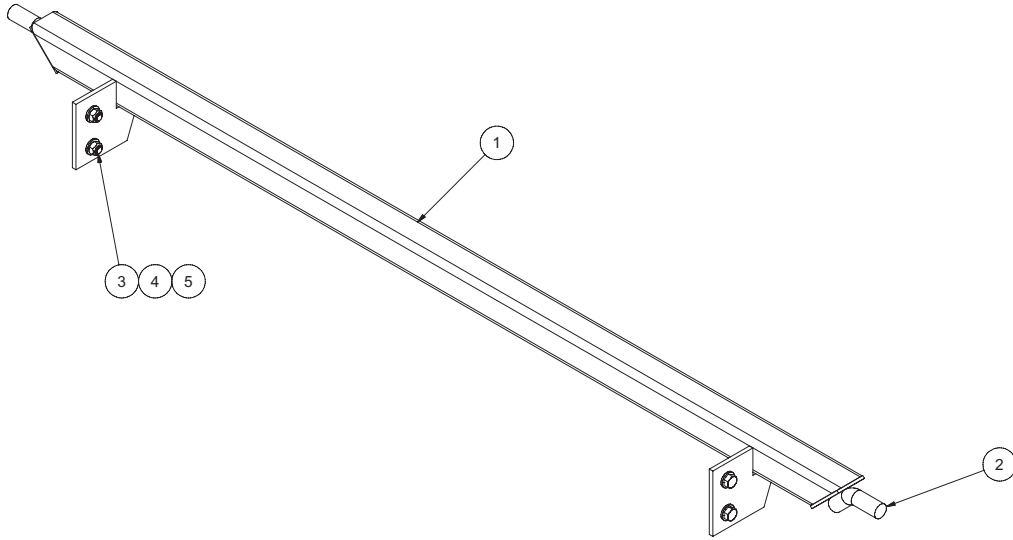
ITEM	QTY	PART #	DESCRIPTION
1	1	00085045-A	Rail Weldment, MV/MSV, 17', LH, MS
	1	00085045-B	Rail Weldment, MV/MSV, 17', LH, 304, SST
2	1	00085044-A	Rail Weldment, MV/MSV, 17'. RH, MS
	1	00085044-B	Rail Weldment, MV/MSV, 17'. RH, 304, SST
3	7	00085173-A	Cross Chan Weldment, MV/MSV, MS
	7	00085173-B	Cross Chan Weldment, MV/MSV, 304, SST
4	64	05014042	Bolt, ½-13 x 1½, G5, Carriage, Zinc
	64	05016803	Bolt, ½-13 x 1½, Carriage, SST
5	134	05021005	Washer, ½, Flat, Mil-Carb, STD
	134	05021391	Washer, ½, Flat, SST
6	106	05020847	Nut, ½-13, GC, Toplock, C&W
	106	05020908	Nut, ½-13, Nylon Lock, SST
7	1	00085030-A	Leg Weldment, Rear, Bolt-Together, MS
	1	00085030-B	Leg Weldment, Rear, Bolt-Together, 304, SST
8	1	00082661-A	Latch Kit, TGT, MS
	1	00082661-B	Latch Kit, TGT, 304, SST
9	14	00085174-A	Bracket, Mounting, MS
	14	00085174-B	Bracket, Mounting, 304, SST
10	42	05010691	Bolt, ½-13 x 1½, G8, HHCS, Zinc
	42	05016096	Bolt, ½-13 x 1½, HHCS, SST

00085073 SKID ASSEMBLY, MV/MSV, 16', STD V-BOX, INBD SPINNER



00085073 SKID ASSEMBLY, MV/MSV, 16', STD V-BOX, INBD SPINNER

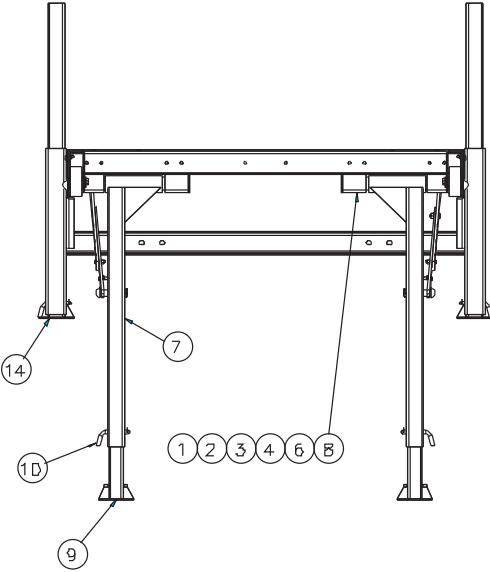
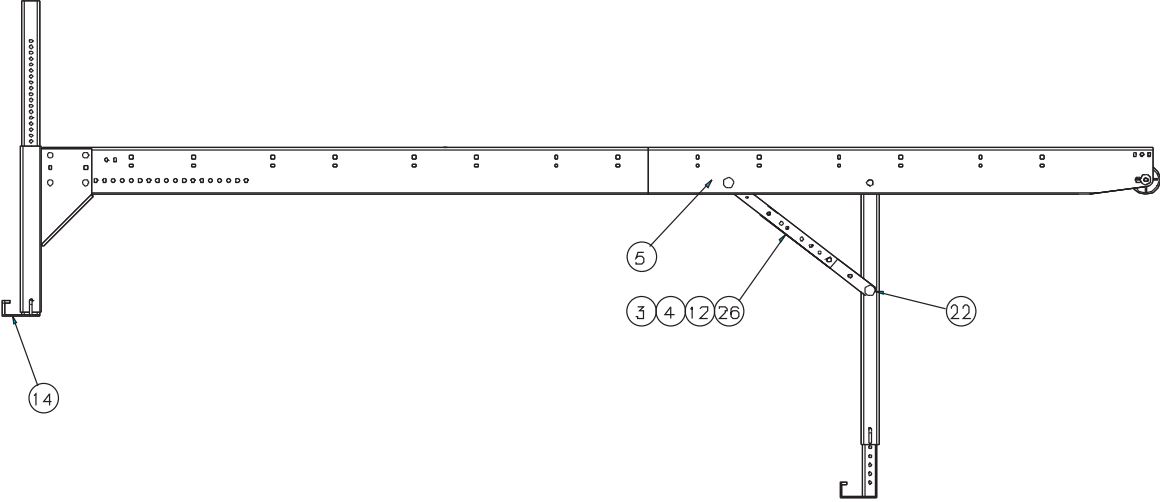
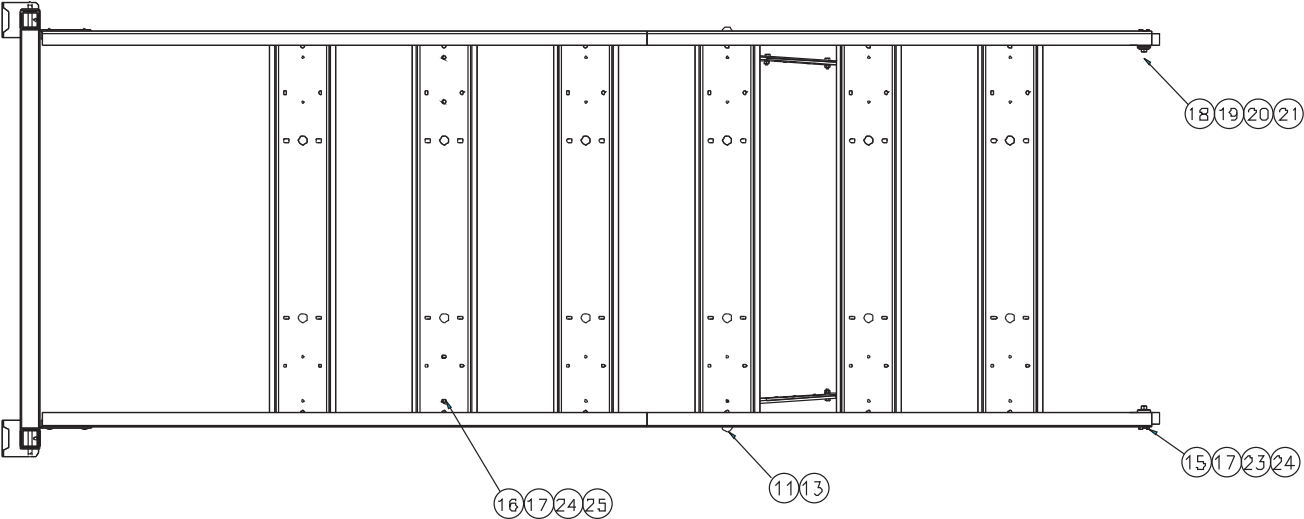
ITEM	QTY	PART #	DESCRIPTION
1	1	00085072-A	Rail Weldment, MV/MSV, 16', LH, MS
	1	00085072-B	Rail Weldment, MV/MSV, 16', LH, 304, SST
2	1	00085071-A	Rail Weldment, MV/MSV, 16'. RH, MS
	1	00085071-B	Rail Weldment, MV/MSV, 16'. RH, 304, SST
3	7	00085173-A	Cross Chan Weldment, MV/MSV, MS
	7	00085173-B	Cross Chan Weldment, MV/MSV, 304, SST
4	64	05014042	Bolt, ½-13 x 1½, G5, Carriage, Zinc
	64	05016803	Bolt, ½-13 x 1½, Carriage, SST
5	134	05021005	Washer, ½, Flat, Mil-Carb, STD
	134	05021391	Washer, ½, Flat, SST
6	106	05020847	Nut, ½-13, GC, Toplock, C&W
	106	05020908	Nut, ½-13, Nylon Lock, SST
7	1	00085030-A	Leg Weldment, Rear, Bolt-Together, MS
	1	00085030-B	Leg Weldment, Rear, Bolt-Together, 304, SST
8	1	00082661-A	Latch Kit, TGT, MS
	1	00082661-B	Latch Kit, TGT, 304, SST
9	14	00085174-A	Bracket, Mounting, MS
	14	00085174-B	Bracket, Mounting, 304, SST
10	42	05010691	Bolt, ½-13 x 1½, G8, HHCS, Zinc
	42	05016096	Bolt, ½-13 x 1½, HHCS, SST



00082661 LATCH KIT, TAILGATE

ITEM	QTY	PART #	DESCRIPTION
1	1	00071342-A	Latch Weldment, Tailgate, Skid, MS
	1	00071342-B	Latch Weldment, Tailgate, Skid, 304
2	2	00028395-A	Pin, Tailgate, Latch, HRR
	2	00028395-A	Pin, Tailgate, Latch, SSR
3	4	05010737	Bolt, 5/8-11 x 1 1/2, G8, HHCS, Zinc
	4	05016248	Bolt, 5/8-11 x 1 1/2, HHCS, SST
4	4	05020837	Nut, 5/8-11, GC, Toplock, C&W
	4	05020903	Nut, 5/8-11, Nylon Lock, SST
5	8	05021017	Washer, 5/8, Mil-Carb, STD
	8	05021406	Washer, 5/8, Flat, SST

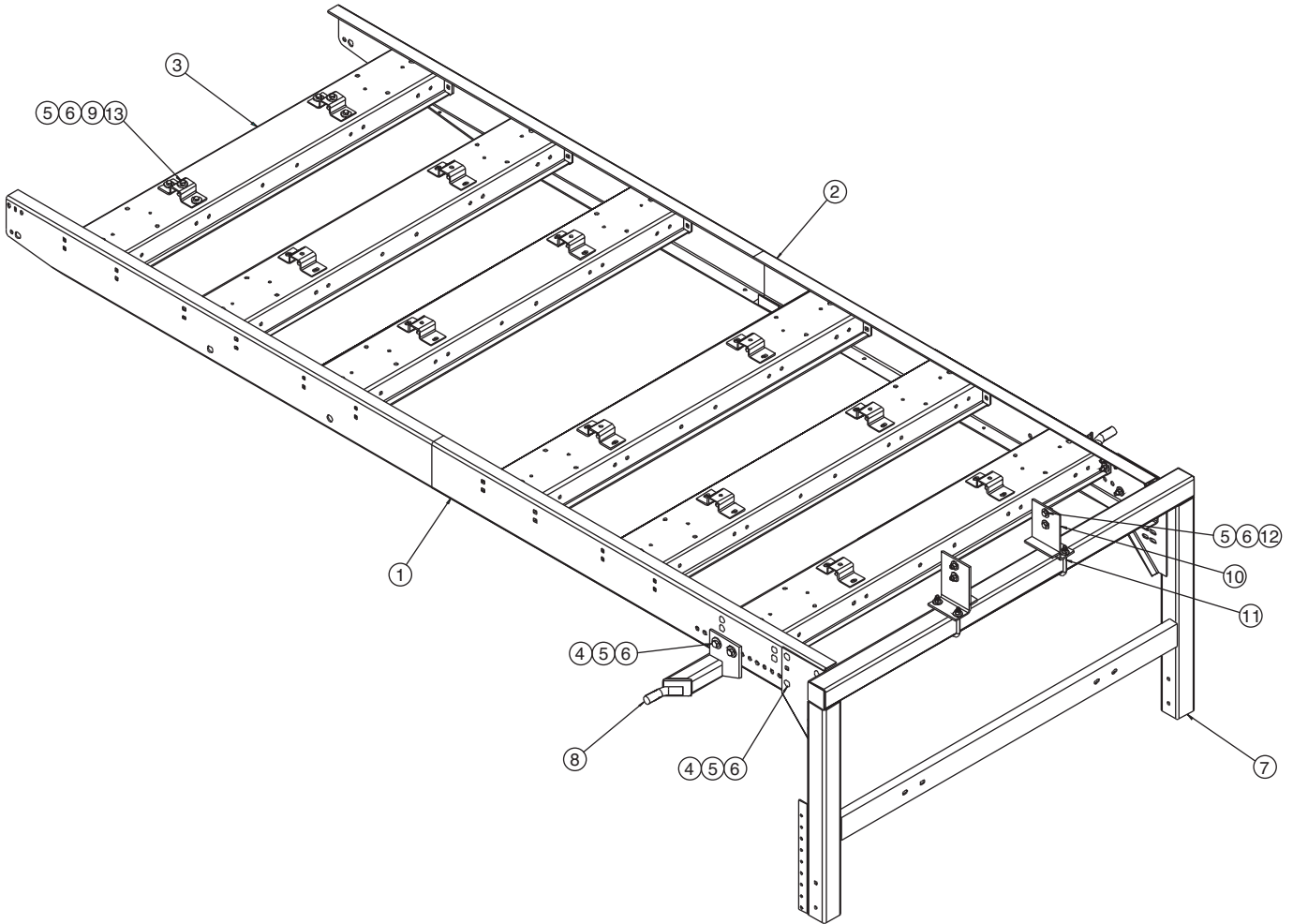
00085034 LEG KIT



00085034 LEG KIT

ITEM	QTY	PART #	DESCRIPTION
1	4	00071356-A	Mount Weldment, Leg, Front, Bolt-On, MS
	4	00071356-B	Mount Weldment, Leg, Front, Bolt-On, 304, SST
2	24	05010690	Bolt, ½-13 x 1¼, G8, HHCS, Zinc
	24	05016045	Bolt, ½-13 x 1¼, HHCS, SST
3	28	05021309	Washer, ½, Flat, Zinc
	28	05021391	Washer, ½, Flat, SST
4	28	05020847	Nut, ½-13, GC, Toplock, C&W
	28	05020908	Nut, ½-13, Nylon Lock, SST, 316
5	2	00056190-C	Mount, Leg, Rail, Bolt-On, MS
	2	00056190-B	Mount, Leg, Rail, Bolt-On, 304, SST
6	2	00071361	Pipe, 2, SCHED, 40 x 18, MS
	2	00071397	Pipe, 2, SCHED, 40 x 18, SST
7	2	00085111-A	Leg Weldment, Front, Outer, Thru-Pin, MS
	2	00085111-B	Leg Weldment, Front, Outer, Thru-Pin, 304, SST
8	4	05050003	Grease Zerk, ⅛, NPT, STR
9	2	00083798-A	Leg Weldment, Inner, Front, Thru-Pin, MS
	2	00083798-B	Leg Weldment, Inner, Front, Thru-Pin, 304, SST
10	4	05022136	Pin, ½ x 4½, 4" Grip Bent, Zinc
11	2	05022077	Pin, 1 x 4½, Button, HD, Zinc
12	4	00082646-A	Brace Plate, Leg, FR, MS
	4	00082646-B	Brace Plate, Leg, FR, 304, SST
13	4	05022106	Pin, ⅜, Lynch
14	2	00085033-A	Leg Weldment, Rear, MS
	2	00085033-B	Leg Weldment, Rear, 304, SST
15	2	00083718-A	Bracket, Supporting, Wheel, MS
	2	00083718-B	Bracket, Supporting, Wheel, 304, SST
16	4	05010643	Bolt, ⅝-16 x 1, G8, HHCS, Zinc
	4	05016034	Bolt, ⅝-16 x 1, HHCS, SST
17	8	05020898	Nut, ⅝-16, GC, Toplock, C&W
	8	05020891	Nut, ⅝-16, Nylon Lock, SST, 316
18	2	05050451	Wheel, Cast Iron, .63 Bore x ⅝ TH x 5 DIA
19	2	05010747	Bolt, ⅝-11 x 4, G8, HHCS, Zinc
20	8	05021311	Washer, ⅝, Flat, Zinc
21	2	05020837	Nut, ⅝-11, GC, Toplock, C&W
22	2	05022186	Pin, 1 x 5¼
23	4	05010644	Bolt, ⅝-16 x 1¼, G8, HHCS, Zinc
	4	05016049	Bolt, ⅝-16 x 1¼, HHCS, SST
24	8	05021307	Washer, ⅝, Flat, Zinc
	8	05021390	Washer, ⅝, Flat, SST
25	2	00085711-A	Hook, Leg, MS
	2	00085711-B	Hook, Leg, 304, SST
26	4	05010691	Bolt, ½-13 x 1½, G8, HHCS, Zinc
	4	05016096	Bolt, ½-13 x 1½, HHCS, SST

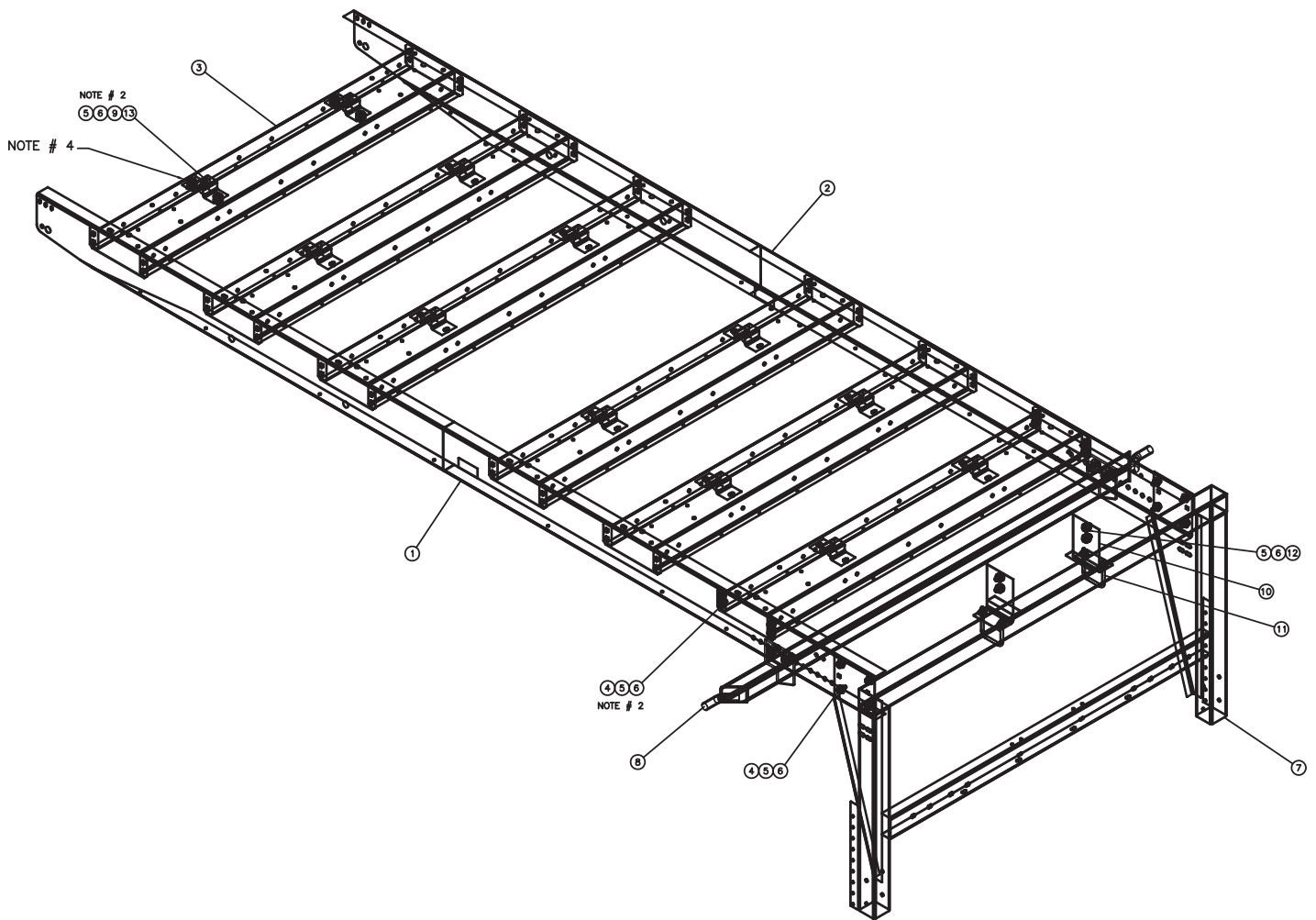
00085810 SKID ASSEMBLY, MV/MSV, 13', COMBO



00085810 SKID ASSEMBLY, MV/MSV, 13', COMBO

ITEM	QTY	PART #	DESCRIPTION
1	1	00085813-A	Rail Weldment, Side, LH, MV/MSV, 13', Combo, MS
	1	00085813-B	Rail Weldment, Side, LH, MV/MSV, 13', Combo, SST
2	1	00085814-A	Rail Weldment, Side, RH, MV/MSV, 13', Combo, MS
	1	00085814-B	Rail Weldment, Side, RH, MV/MSV, 13', Combo, SST
3	6	00085173-A	Cross Channel Weldment, MV/MSV, Combo Unit, MS
	6	00085173-B	Cross Channel Weldment, MV/MSV, Combo Unit, SST
4	56	05014042	Bolt, ½-13 x 1½, G5, Carriage, Zinc
	56	05016803	Bolt, ½-13 x 1½, Carriage, SST
5	120	05021005	Washer, ½, Flat, Mil-Carb, STD
	120	05021391	Washer, ½, Flat, SST
6	96	05020847	Nut, ½-13, GC, Toplock, C&W
	96	05020908	Nut, ½-13, Nylon Lock, SST
7	1	00083794-A	Leg Weldment, Rear, MS
	1	00083794-B	Leg Weldment, Rear, SST
8	1	00082661-A	Latch Kit, TGT, MS
	1	00082661-B	Latch Kit, TGT, SST
9	36	05010691	Bolt, ½-13 x 1½, G8, HHCS, Zinc
	36	05016096	Bolt, ½-13 x 1½, G8, HHCS, Zinc
10	2	00085714-A	Bracket Weldment, LMBR Support, Rear, MS
	2	00085714-B	Bracket Weldment, LMBR Support, Rear, SST
11	2	00037725	U-Bolt, 3½ x 5
12	4	05010690	Bolt, ½-13 x 1¼, G8, HHCS, Zinc
	4	05016045	Bolt, ½-13 x 1¼, HHCS, SST
13	12	00085174-A	Bracket, Mounting, MS
	12	00085174-B	Bracket, Mounting, SST

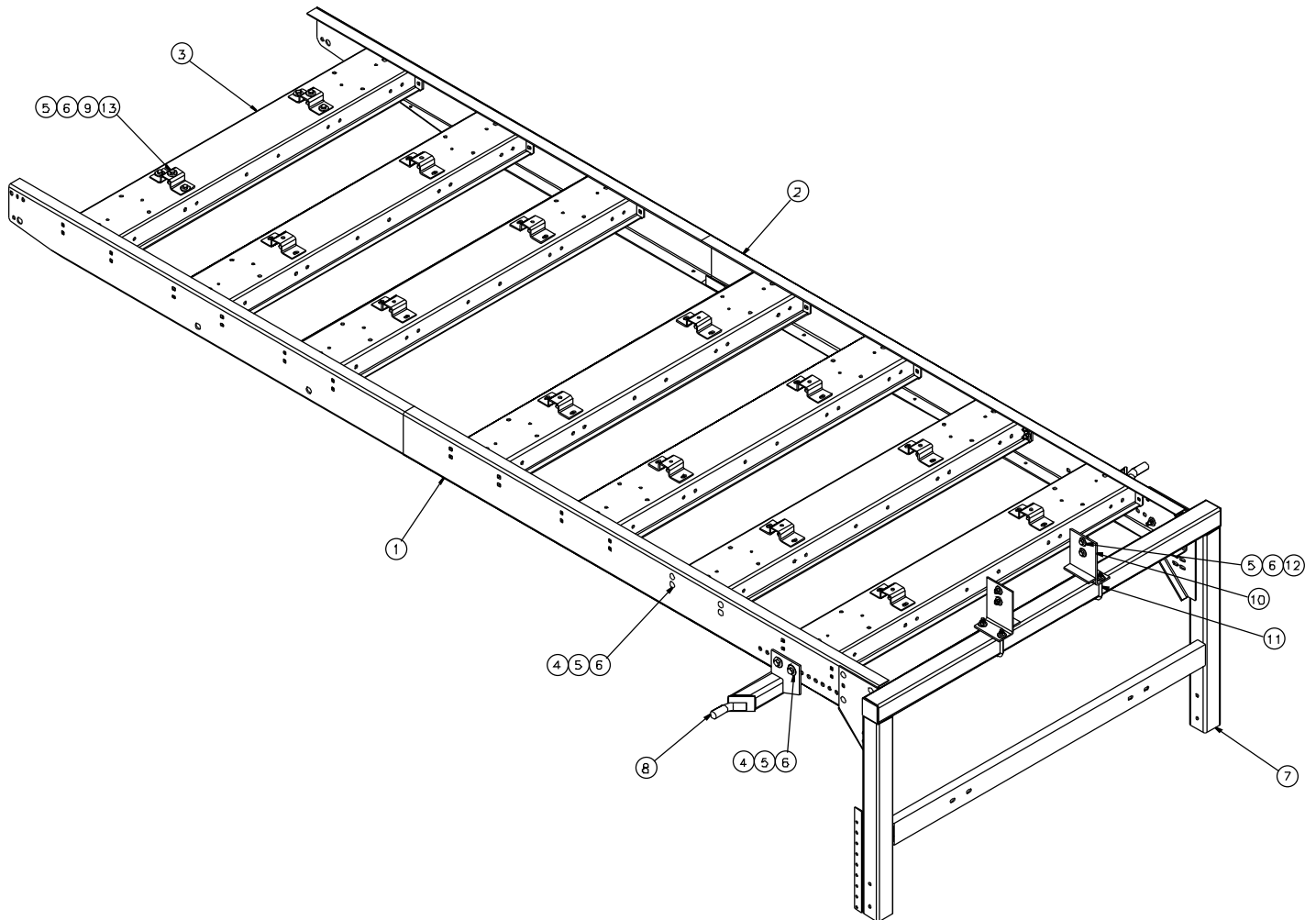
00085290 SKID ASSEMBLY, MV/MSV, 14', COMBO



00085290 SKID ASSEMBLY, MV/MSV, 14', COMBO

ITEM	QTY	PART #	DESCRIPTION
1	1	00085295-A	Rail Weldment, Side, LH, MV/MSV, 14', Combo, MS
	1	00085295-B	Rail Weldment, Side, LH, MV/MSV, 14', Combo, SST
2	1	00085296-A	Rail Weldment, Side, RH, MV/MSV, 14', Combo, MS
	1	00085296-B	Rail Weldment, Side, RH, MV/MSV, 14', Combo, SST
3	6	00085173-A	Cross Channel Weldment, MV/MSV, Combo Unit, MS
	6	00085173-B	Cross Channel Weldment, MV/MSV, Combo Unit, SST
4	56	05014042	Bolt, ½-13 x 1½, G5, Carriage, Zinc
	56	05016803	Bolt, ½-13 x 1½, Carriage, SST
5	120	05021005	Washer, ½, Flat, Mil-Carb, STD
	120	05021391	Washer, ½, Flat, SST
6	96	05020847	Nut, ½-13, GC, Toplock, C&W
	96	05020908	Nut, ½-13, Nylon Lock, SST
7	1	00083794-A	Leg Weldment, Rear, MS
	1	00083794-B	Leg Weldment, Rear, SST
8	1	00082661-A	Latch Kit, TGT, MS
	1	00082661-B	Latch Kit, TGT, SST
9	36	05010691	Bolt, ½-13 x 1½, G8, HHCS, Zinc
	36	05016096	Bolt, ½-13 x 1½, G8, HHCS, Zinc
10	2	00085714-A	Bracket Weldment, LMBR Support, Rear, MS
	2	00085714-B	Bracket Weldment, LMBR Support, Rear, SST
11	2	00037725	U-Bolt, 3½ x 5
12	4	05010690	Bolt, ½-13 x 1¼, G8, HHCS, Zinc
	4	05016045	Bolt, ½-13 x 1¼, HHCS, SST
13	12	00085174-A	Bracket, Mounting, MS
	12	00085174-B	Bracket, Mounting, SST

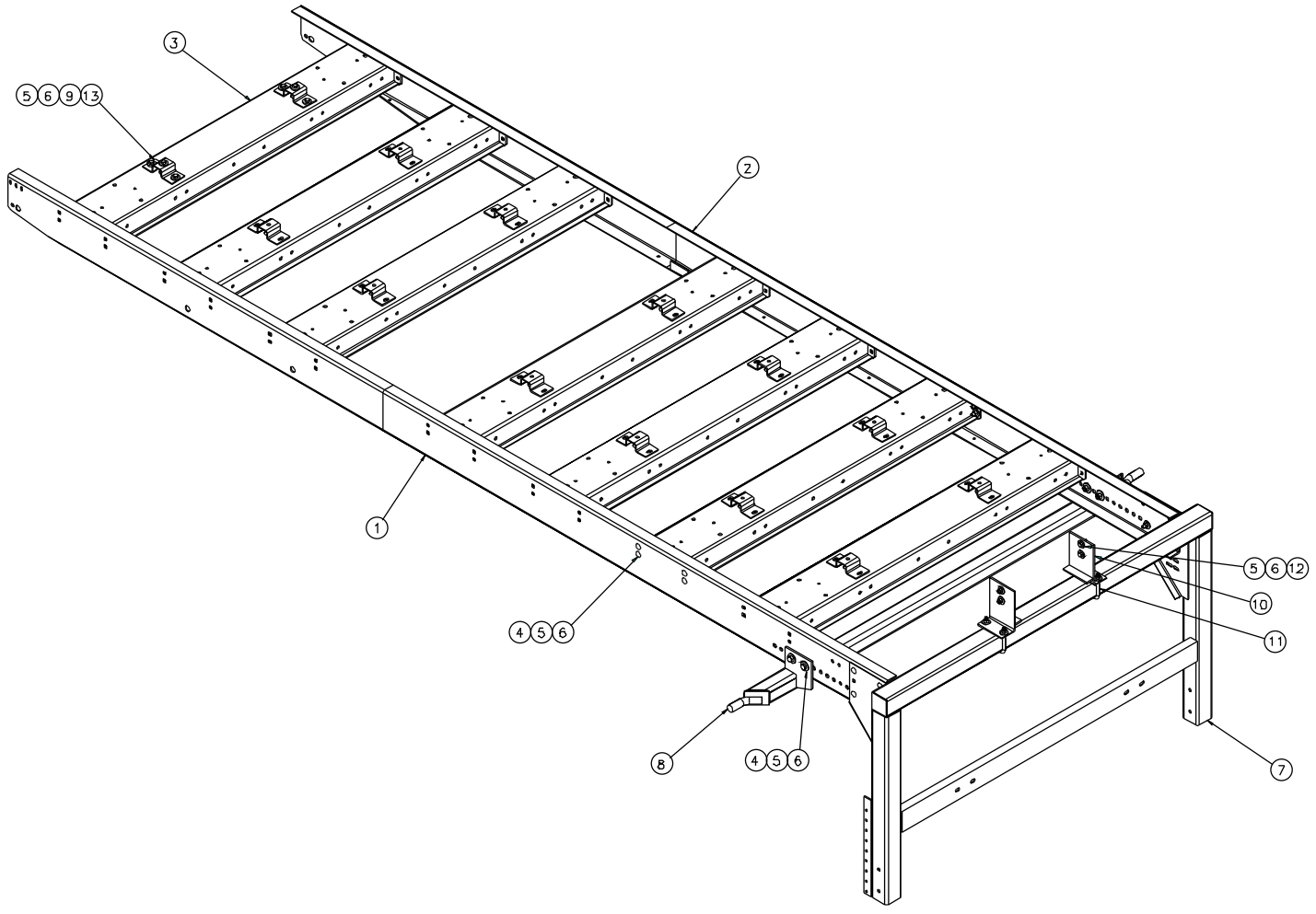
00085815 SKID ASSEMBLY, MV/MSV, 15', COMBO



00085815 SKID ASSEMBLY, MV/MSV, 15', COMBO

ITEM	QTY	PART #	DESCRIPTION
1	1	00085818-A	Rail Weldment, Side, LH, MV/MSV, 15', Combo, MS
	1	00085818-B	Rail Weldment, Side, LH, MV/MSV, 15', Combo, SST
2	1	00085819-A	Rail Weldment, Side, RH, MV/MSV, 15', Combo, MS
	1	00085819-B	Rail Weldment, Side, RH, MV/MSV, 15', Combo, SST
3	7	00085173-A	Cross Channel Weldment, MV/MSV, Combo Unit, MS
	7	00085173-B	Cross Channel Weldment, MV/MSV, Combo Unit, SST
4	64	05014042	Bolt, ½-13 x 1½, G5, Carriage, Zinc
	64	05016803	Bolt, ½-13 x 1½, Carriage, SST
5	138	05021005	Washer, ½, Flat, Mil-Carb, STD
	138	05021391	Washer, ½, Flat, SST
6	110	05020847	Nut, ½-13, GC, Toplock, C&W
	110	05020908	Nut, ½-13, Nylon Lock, SST
7	1	00083794-A	Leg Weldment, Rear, MS
	1	00083794-B	Leg Weldment, Rear, SST
8	1	00082661-A	Latch Kit, TGT, MS
	1	00082661-B	Latch Kit, TGT, SST
9	42	05010691	Bolt, ½-13 x 1½, G8, HHCS, Zinc
	42	05016096	Bolt, ½-13 x 1½, G8, HHCS, Zinc
10	2	00085714-A	Bracket Weldment, LMBR Support, Rear, MS
	2	00085714-B	Bracket Weldment, LMBR Support, Rear, SST
11	2	00037725	U-Bolt, 3½ x 5
12	4	05010690	Bolt, ½-13 x 1¼, G8, HHCS, Zinc
	4	05016045	Bolt, ½-13 x 1¼, HHCS, SST
13	14	00085174-A	Bracket, Mounting, MS
	14	00085174-B	Bracket, Mounting, SST

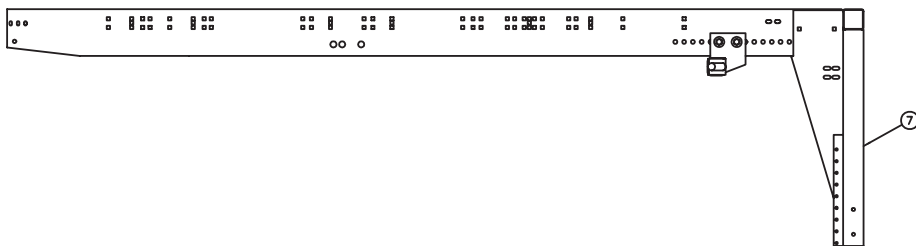
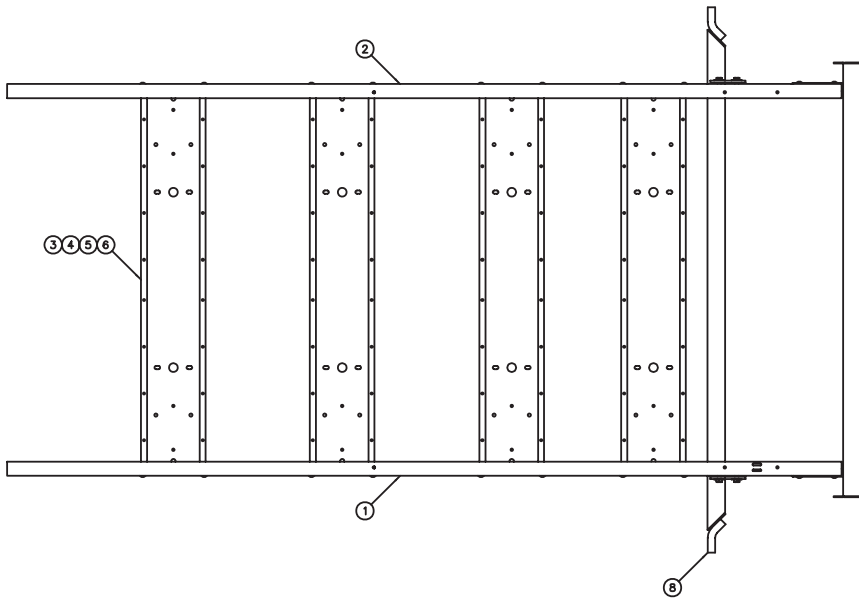
00085820 SKID ASSEMBLY, MV/MSV, 16', COMBO



00085820 SKID ASSEMBLY, MV/MSV, 16', COMBO

ITEM	QTY	PART #	DESCRIPTION
1	1	00085823-A	Rail Weldment, Side, LH, MV/MSV, 16', Combo, MS
	1	00085823-B	Rail Weldment, Side, LH, MV/MSV, 16', Combo, SST
2	1	00085824-A	Rail Weldment, Side, RH, MV/MSV, 16', Combo, MS
	1	00085824-B	Rail Weldment, Side, RH, MV/MSV, 16', Combo, SST
3	7	00085173-A	Cross Channel Weldment, MV/MSV, Combo Unit, MS
	7	00085173-B	Cross Channel Weldment, MV/MSV, Combo Unit, SST
4	64	05014042	Bolt, ½-13 x 1½, G5, Carriage, Zinc
	64	05016803	Bolt, ½-13 x 1½, Carriage, SST
5	138	05021005	Washer, ½, Flat, Mil-Carb, STD
	138	05021391	Washer, ½, Flat, SST
6	110	05020847	Nut, ½-13, GC, Toplock, C&W
	110	05020908	Nut, ½-13, Nylon Lock, SST
7	1	00083794-A	Leg Weldment, Rear, MS
	1	00083794-B	Leg Weldment, Rear, SST
8	1	00082661-A	Latch Kit, TGT, MS
	1	00082661-B	Latch Kit, TGT, SST
9	42	05010691	Bolt, ½-13 x 1½, G8, HHCS, Zinc
	42	05016096	Bolt, ½-13 x 1½, G8, HHCS, Zinc
10	2	00085714-A	Bracket Weldment, LMBR Support, Rear, MS
	2	00085714-B	Bracket Weldment, LMBR Support, Rear, SST
11	2	00037725	U-Bolt, 3½ x 5
12	4	05010690	Bolt, ½-13 x 1¼, G8, HHCS, Zinc
	4	05016045	Bolt, ½-13 x 1¼, HHCS, SST
13	14	00085174-A	Bracket, Mounting, MS
	14	00085174-B	Bracket, Mounting, SST

00087016 SKID ASSEMBLY, NARROW, THRU-PIN, 1000 GAL & 1235 GAL



USE HOLES CONTAINED IN BOXES TO MOUNT CROSS BRACES FOR A 925 GAL TANK (05050721)



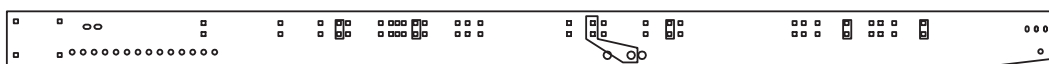
USE HOLES CONTAINED IN BOXES TO MOUNT CROSS BRACES FOR A 1000 GAL TANK SADDLE (00044179)



USE HOLES CONTAINED IN BOXES TO MOUNT CROSS BRACES FOR A 1035 GAL TANK (05052251)



USE HOLES CONTAINED IN BOXES TO MOUNT CROSS BRACES FOR A 1235 GAL TANK (05050355)

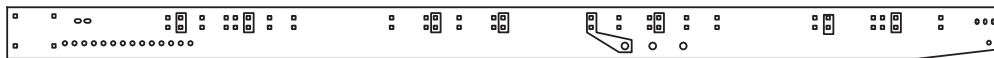
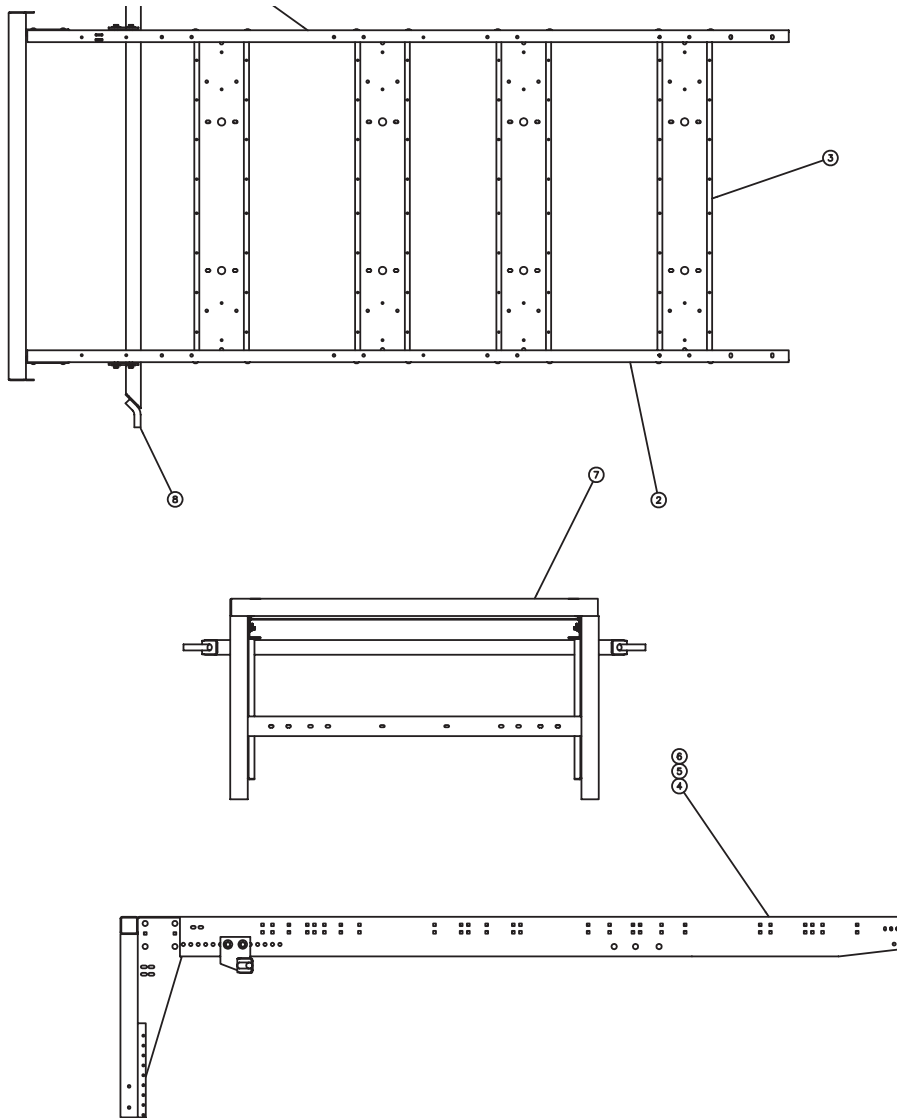


USE HOLES CONTAINED IN BOXES TO MOUNT CROSS BRACES FOR A 1300 GAL TANK (05052560)

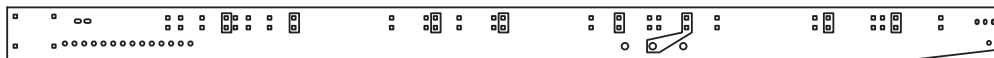
00087016 SKID ASSEMBLY, NARROW, THRU-PIN, 1000 GAL & 1235 GAL

ITEM	QTY	PART #	DESCRIPTION
1	1	00080720-A	Rail, Side, RH, Narrow, MS
	1	00080720-B	Rail, Side, RH, Narrow, SST
2	1	00080724-A	Rail, Side, LH, Narrow, MS
	1	00080724-B	Rail, Side, LH, Narrow, SST
3	4	00085173-A	Cross Channel Weldment, MV/MSV, Combo Unit, MS
	4	00085173-B	Cross Channel Weldment, MV/MSV, Combo Unit, SST
4	40	05014042	Bolt, ½-13 x 1½, G5, Carriage, Zinc
	40	05016803	Bolt, ½-13 x 1½, Carriage, SST
5	40	05021005	Washer, ½, Flat, Mil-Carb, STD
	40	05021391	Washer, ½, Flat, SST
6	40	05020847	Nut, ½-13, GC, Toplock, C&W
	40	05020908	Nut, ½-13, Nylon Lock, SST
7	1	00083794-A	Leg Weldment, Rear, MS
	1	00083794-B	Leg Weldment, Rear, SST
8	1	00082661-A	Latch Kit, TGT, MS
	1	00082661-B	Latch Kit, TGT, SST

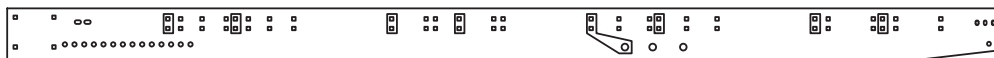
00087431 SKID ASSEMBLY, NARROW, THRU-PIN, 1600 GAL, 1635 GAL & 1800 GAL



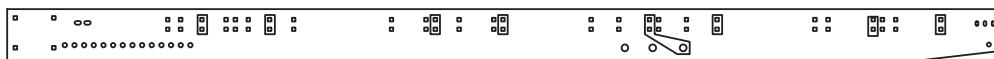
USE HOLES CONTAINED IN BOXES TO MOUNT CROSS BRACES FOR A 1600 GAL TANK (00048829)



USE HOLES CONTAINED IN BOXES TO MOUNT CROSS BRACES FOR A 1635 GAL TANK (05050430)



USE HOLES CONTAINED IN BOXES TO MOUNT CROSS BRACES FOR A 1800 GAL TANK (05050325)



USE HOLES CONTAINED IN BOXES TO MOUNT CROSS BRACES FOR A 1750 GAL TANK (05052974)

00087016 SKID ASSEMBLY, NARROW, THRU-PIN,

ITEM	QTY	PART #	DESCRIPTION
1	1	00080720-A	Rail, Side, RH, Narrow, MS
	1	00080720-B	Rail, Side, RH, Narrow, SST
2	1	00080724-A	Rail, Side, LH, Narrow, MS
	1	00080724-B	Rail, Side, LH, Narrow, SST
3	4	00085173-A	Cross Channel Weldment, MV/MSV, Combo Unit, MS
	4	00085173-B	Cross Channel Weldment, MV/MSV, Combo Unit, SST
4	40	05014042	Bolt, ½-13 x 1½, G5, Carriage, Zinc
	40	05016803	Bolt, ½-13 x 1½, Carriage, SST
5	40	05021005	Washer, ½, Flat, Mil-Carb, STD
	40	05021391	Washer, ½, Flat, SST
6	40	05020847	Nut, ½-13, GC, Toplock, C&W
	40	05020908	Nut, ½-13, Nylon Lock, SST
7	1	00083794-A	Leg Weldment, Rear, MS
	1	00083794-B	Leg Weldment, Rear, SST
8	1	00082661-A	Latch Kit, TGT, MS
	1	00082661-B	Latch Kit, TGT, SST

HOW TO ORDER PARTS

To order or inquire about replacement parts, please contact the **distributor** or **store** that the product was purchased through. To speed the information flow, please have the following information ready:

- Model Number
- Serial Number
- Part Number and/or description as per the parts manual
- Quantity needed

For further information about **Monroe Truck Equipment** replacement parts, please call 800-880-0109 and ask for **Snow & Ice Parts Sales**.

RETURN POLICY

Merchandise returned to **Monroe Truck Equipment** must have a Returned Goods Authorization (RGA) form filled out completely and signed by authorized personnel. To get your RGA form, call 800-880-0109. For whole goods, ask for **Snow & Ice Sales**. For replacement parts, ask for **Snow & Ice Parts Sales**. All returned items are subject to a 15% restocking fee and must be sent freight prepaid!

MONROE TRUCK EQUIPMENT, INC. WARRANTY SNOW & ICE CONTROL PRODUCTS

Monroe Truck Equipment, Inc. warrants to the original purchaser, that if any part of the product proves to be defective in workmanship or material within **ONE YEAR** of the original installation, and is returned to us within 30 days of the discovered defect, we will (at our option) repair or replace the defective part. This warranty does not apply to damage resulting from misuse, neglect, accident, improper installation, normal wear items or lack of maintenance. This warranty is exclusive and supersedes all other warranties, whether expressed or implied. **Monroe Truck Equipment, Inc.** neither assumes, nor authorizes anyone to assume for it, any other obligation or liability in connection with this warranty and will not be liable for consequential damages.

All engines, pumps, motors, cylinders and valves are warranted by their manufacturer and not by **Monroe Truck Equipment, Inc.**. The manufacturer's warranty will apply to these parts. Electrical and hydraulic components are not to be disassembled without the express written permission of Monroe Truck Equipment. Use of replacement parts other than original equipment voids this warranty.

All defective parts returned must be accompanied by the model number, serial number, date installed, date of defect, description of defect, and the name of the distributor from whom it was purchased. All warranty claims must have prior written approval from **Monroe Truck Equipment, Inc.**

Please return the warranty registration card that accompanies this manual to confirm receipt of this parts catalog and acknowledge the information contained within. Failure to return the attached card may result in a voided warranty.



1051 West 7th Street
Monroe, WI 53566
608-328-8127 ~ Fax: 608-328-4278

Warranty Policy

Uninstalled Parts and Equipment Provided by Monroe Truck Equipment

Monroe Truck Equipment will provide the following limited warranty for a period of one year to the original purchaser of all uninstalled goods provided by Monroe Truck Equipment:

LIMITED WARRANTY: All goods provided by Monroe Truck Equipment (MTE) will be free from defects in material and workmanship for a period of one year from the date of purchase by the original purchaser. This limited warranty shall be the sole and exclusive remedy for any such product found to be defective. This limited warranty supercedes all previous warranties and is exclusive and in lieu of all other warranties, whether expressed or implied.

This limited warranty applies only to parts or accessories manufactured by MTE and/or provided by same. Except with respect to title, this limited warranty does not pertain to parts or accessories not manufactured and/or provided by MTE, regardless of whether such parts or accessories were selected and/or recommended by MTE. MTE will, as a service to the buyer, pass on any warranties received from the original manufacturer of MTE provided parts and/or accessories.

MTE will not under any circumstances be liable for any incidental or consequential damages whether in tort, contract, or otherwise, for any bodily injury, death, property damage, loss of use, or loss of income resulting from or in any way arising out of any goods provided by MTE, or their sale, use, or manufacture.

Any warranty claim deemed to be arising from the result of misuse, abuse, neglect, accident, improper installation, lack of maintenance, act of war (whether declared or otherwise), or act of God will be denied. Any repair or modification by the buyer or any third party, without the prior written consent of MTE, will void any possible warranty compensation. Any damage deemed to be the result of abnormal operation will not be compensated by this warranty.

Normal or special maintenance items such as fuels, fluids, tires, belts, hoses, filters, air cleaners, light bulbs, and any other items subject to normal wear and tear that are supplied in connection with goods provided by MTE are not allowed under this warranty.

All engines, pumps, cylinders, valves, and motors are warranted by their manufacturer and not by Monroe Truck Equipment. The manufacturer's warranty will apply to these parts. Electrical and hydraulic components are not to be disassembled without the express written consent of MTE. Any disassembly of MTE provided components without prior authorization will void the applicable warranty.

Monroe Truck Equipment shall be the sole and final determining authority as it applies to the administration of this warranty policy. Purchaser acknowledges receipt of Monroe Truck Equipment Warranty Policy and agrees to be bound by same.



GLOBAL SOLUTIONS
ARMORED VEHICLES ~ SPORT TRUCK CONVERSIONS
MUNICIPAL SNOW & ICE CONTROL ~ FIRE APPARATUS
PICKUP TRUCK ACCESSORIES ~ TRUCK EQUIPMENT/MODIFICATIONS





1051 West 7th Street
Monroe, WI 53566
608-328-8127 ~ Fax: 608-328-4278

Any and all warranty claims must be forwarded to MTE within 10 days of defect discovery. A copy of the original Monroe Truck Equipment invoice as well as the manufacturer's model number, serial number, and date of installation must accompany all correspondence regarding said claims. MTE will, at their option, choose whether to repair or replace the defective part unless otherwise specified by the original manufacturer of said part.

Procedures for Warranty Claims Notification

For submission of any warranty claim please contact Monroe Truck Equipment – Warranty Department at 800-356-8134

The following documentation will be needed when you call for initial warranty authorization:

1. A copy of the original MTE invoice.
2. Make, Model, and VIN or Serial Number of the equipment involved.
3. Part number and serial number of the part in question.
4. A complete description of the problem.

The following must accompany any claim submitted to Monroe Truck Equipment:

1. Documented photographs of any physical damage.
2. Inspection notes by MTE personnel or MTE authorized 3rd party.
3. Authorization number issued by Monroe Truck Equipment – Warranty Department.

Defective parts must be returned to Monroe Truck Equipment (freight prepaid) within 30 days of issuance of Authorization Number.

Monroe Truck Equipment reserves the right to void any warranty for failure to comply with Monroe Truck Equipment Warranty Policy.

This policy is effective October 11, 2012