

# Replacement Tailgate

RT/RTS/ZDRT



**RTS Spreader with built-in Pre-wet Tank and Twin Spinner**

#### **Options:**

- Spinner Guards
- Agitator Bar
- Open Center and Closed Center Flow Control Valves
- 3/16" Bolt-On Mild Steel Backing Plate
- Hose Kits
- Custom Paint
- 3, 6 & 9 Panel Reinforcement
- Stainless Steel
- Integral Pre-wet Tanks



**1-Ton Replacement Tailgate Spreader Application Shown with Optional Receiver Hitch Mounted Spinner**



#### **RTS Features:**

- Tailgate is Constructed of 3/16" Mild Steel Body with 1/4" Endplates.
- 3" x 3" x 1/4" Minimum Tube Type Frame
- Full-Width Auger Located Below the Dump Body Floor
- Auger has 3/8" Flighting with a 4" Pitch
- Agitator has ten, 3.5" x 3.5" x 1/4" Interrupters Angularly Welded
- Both Auger and Agitator are Direct Driven by Low Speed High Torque Hydraulic Motors
- Interior Seams are 100% Continuously Welded
- Self-Leveling Spinner Assembly is Equipped with an 18" Spinner Disc Constructed of Black Polymer Material
- Full Bottom Opening
- Powder Coat Paint

#### **RT Features:**

- Full Width Auger Eliminates Corner Build-Up
- Easy Installation and Removal
- 7ga. Construction
- 6" Auger with 4" Pitch and 3/8" Thickness
- Continuous Welded Interior
- Maximum Ground to Spinner Height
- Spinner Remains Parallel to Ground at Various Dump Angles
- Low Speed High Torque Motor Gives Dependable Spreading Control
- Adjustable Spinner for Various Spreading Patterns
- Slip-off Drive Assembly Guard

#### **Q: Why should I use a Monroe full replacement style spreader?**

A: The Monroe full replacement tailgate style spreader is designed to completely replace the original dump body tailgate. Each one is custom-built in our modern manufacturing facility here in Monroe, Wisconsin, by carefully trained welders and assemblers. By building each unit to the exact dimensions you provide from your existing dump body tailgate, we can help ensure a tight fit, no material leakage and excellent spinner clearance to the ground.

#### **Q: What limitations do I need to take into consideration when choosing a Monroe Full Replacement style spreader?**

A: Monroe builds two distinct styles of full replacement spreaders. Our RT unit is designed for small trucks where spinner clearance is a particular issue. Because the bottom trough does not open and the spinner sits at the level of the dump body floor, an extra 8" of clearance is obtained.

Conversely, the Monroe RTS unit has a full-opening bottom trough and the spreader is designed so the hopper sits below the level of the dump body floor. Typically used on larger trucks where spinner clearance isn't critical, the RTS may be up to 55" tall, depending on the provided tailgate dimensions.

Each of these two units allows the granular material to feed more evenly into the spreader since continuous load pressure can be maintained more easily than with an undertailgate spreader. Hinges and locking pins must be fitted by the installer.



## Drive Options

### Chain Drive



- Drive uses #60 Chain with 2.6:1 ratio
- Drive Assembly is Protected by a One Piece Chain Guard That is Easily Removable Without The Use of Tools
- Requires Some Maintenance

### Direct Drive



- Low Speed High Torque Hydraulic Motor Directly Coupled to the Auger
- Provides Higher Performance
- Decreased Maintenance Costs

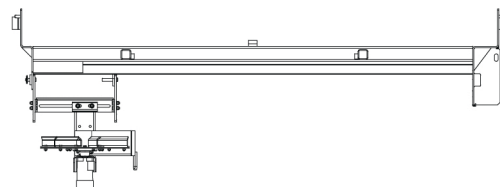
### Gearbox Drive



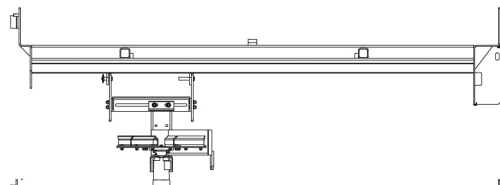
- Drive has 5:1 Reduction with a Direct Attached Motor Coupled to the Auger
- Better Control at Low Spread Rates for More Efficient Spreading
- Incorporated Thru-Shaft for Convenient Spread Rate Sensor Mounting

## Discharge Location

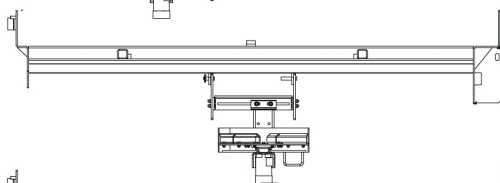
One-Way



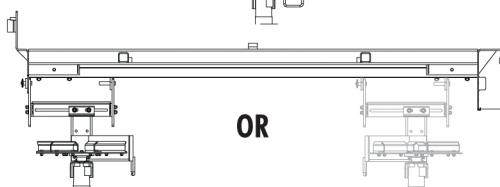
Reverse Flight



Center Discharge

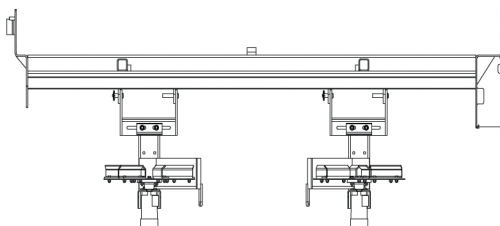


Dual Discharge

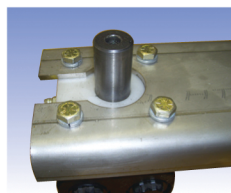


OR

Twin Spinner



***An innovative and inexpensive way to extend the life of your tailgate spreader spinner!***



The Seal Saver is designed to help eliminate the issue of sand, salt or other granular products from migrating directly into the motor seal on spinner assemblies.



The complete Seal Saver System includes:

- Hydraulic motor with extended shaft
- Machined poly spacer with a grease groove and zerk installed

Installing the spacer and injecting grease on a regular basis will force undesired materials away from the motor seal.



Standard Self Leveling Spinner with Stabilizer Rod



Stationary Bumper Mount Spinners on a One-Way Dual Discharge Spreader



Self Leveling Spinner without Stabilizer Rod



Accu-Place Spinner

**Spinner Options**





	MS886	MS966	MS969	MS964DA	88RS	96RS	RT	RTS	ZDRTS	MS10312	MS10318
<b>CONSTRUCTION</b>											
Mild Steel	X	X	X	X	X	X	X	X	X	X	X
Corrosion Resistant Stainless Steel	X	X	X	X	X	X	X	X	X	X	X
Spreader Width	88"	96"	96"	96"	88"	96"	Custom	Custom	88.5"	103"	103"
<b>DRIVE</b>											
Direct Drive	X	X	X			X	X	X			
Gearbox Drive 5:1	X	X	X		X	X	X	X			
Chain & Sprocket Drive	X	X		X	X	X	X	X	X	X	
<b>AUGER</b>											
Diameter	6"	6"	9"	4"	4.5"	4.5"	6"	6" or 9"	6"	Belt	Belt
<b>DISCHARGE LOCATION</b>											
One-Way	LH	LH	LH				LH/RH	LH/RH	X		
Reverse Flight	LH	LH		X			X	X			
Dual Discharge	X	X	X							X	X
Center Discharge	X	X	X	X			X	X	X		
Full Length					X	X					
<b>SPREADING MATERIAL</b>											
Sand	X	X	X	X	X	X	X	X	X	X	X
Salt	X	X	X	X	X	X	X	X	X	X	X
Gravel			X							X	X
Chip					X	X					
<b>SPINNER</b>											
18" Poly	X	X	X	X	X	X	X	X	X	X	X
18" Mildsteel	X	X	X	X	X	X	X	X	X	X	X
18" Stainless Steel	X	X	X	X	X	X	X	X	X	X	X
Accu-place		X	X				X	X			



## POWDER COAT

- The ability to withstand high levels of corrosion protection to salt, chemicals, humidity, scratching and impact, far surpassing conventional paint top coats.
- Resists fading from U.V. rays
- Environmentally green process
- Excellent adhesion
- High degree of scuff, chip or scratch resistance



- Environmentally SAFE Process
- Emits NO VOC's
- Contains NO Heavy Metals
- NO Solvent Disposal

"We use our trucks and equipment in a high chemical and high abrasive environment. Powder coating is the best route for several reasons. The main reason for us is the appearance because we like to have the image of always having superior and functional equipment. For this reason a powder coat finish is the best option for us on our salt spreaders. We also have had great results from the powder coat finish on our Snow Bully Snow Pushers. We own over 20 of them and we have never had to repaint a single one. Some of the v-boxes we have are 10 years old and have had heavy usage. They also have never been repainted. Only minor touch ups due to either driver or loader error. We will never use any type of equipment that does not have a powder coat finish. That is one of the reasons we use Monroe Snow & Ice Control Products exclusively!"

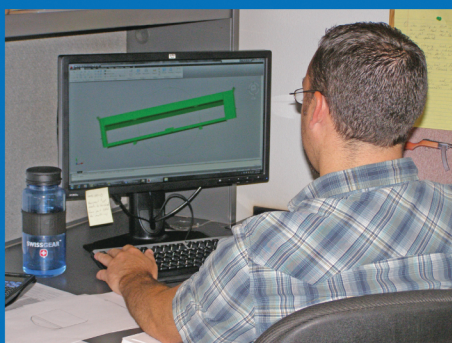


- Trevor Biebrach, Director of Operations, Snow Systems Incorporated

**MTE - Achieving  
Exceptional Quality Finishes  
Our Customers Demand!**



	MS886	MS966	MS969	MS964DA	88RS	96RS	RT	RTS	ZDRTS	MS10312	MS10318
<b>OPTIONS</b>											
Centerline Chute		X	X							X	X
Integral Speed Sensor	X	X	X	X			X	X	X	X	X
Flow Control Valve	X	X	X	X	X	X	X	X	X	X	X
Hose Kit	X	X	X	X	X	X	X	X	X	X	X
Control Valve Stand	X	X	X	X	X	X	X	X	X	X	X
Hydraulic Tanks	X	X	X	X	X	X	X	X	X	X	X
Spinner w/ Stabilizer Rod	X	X	X	X			X	X	X		
Gravity Leveled Spinner	X	X	X	X			X	X	X		
4' Extension										X	X
Light Bar	X	X	X	X	X	X	X	X	X	X	X
Custom Paint	X	X	X	X	X	X	X	X	X	X	X
Pre-wet Application	X	X	X	X	X	X	X	X	X	X	X
BermMaster										X	X
Chipper Attachment					X	X					
Extended Side Shields	X	X	X	X	X	X					



### MTE's Engineering, Research & Development Team

- 6 Design Engineers and 4 Designer Draftsmen
- Design Software: AutoCad, Inventor, Design Space Finite Element Analysis Software for Stress Analysis
- Dedicated R&D Area and Technicians

Distributed by:

Manufactured by:

**Monroe Snow & Ice Control**  
A Division of Monroe Truck Equipment  
1051 W. 7th Street, Monroe, WI 53566  
PH: 800-880-0109 • FX: 608-328-8390  
[www.monroetruck.com](http://www.monroetruck.com)

