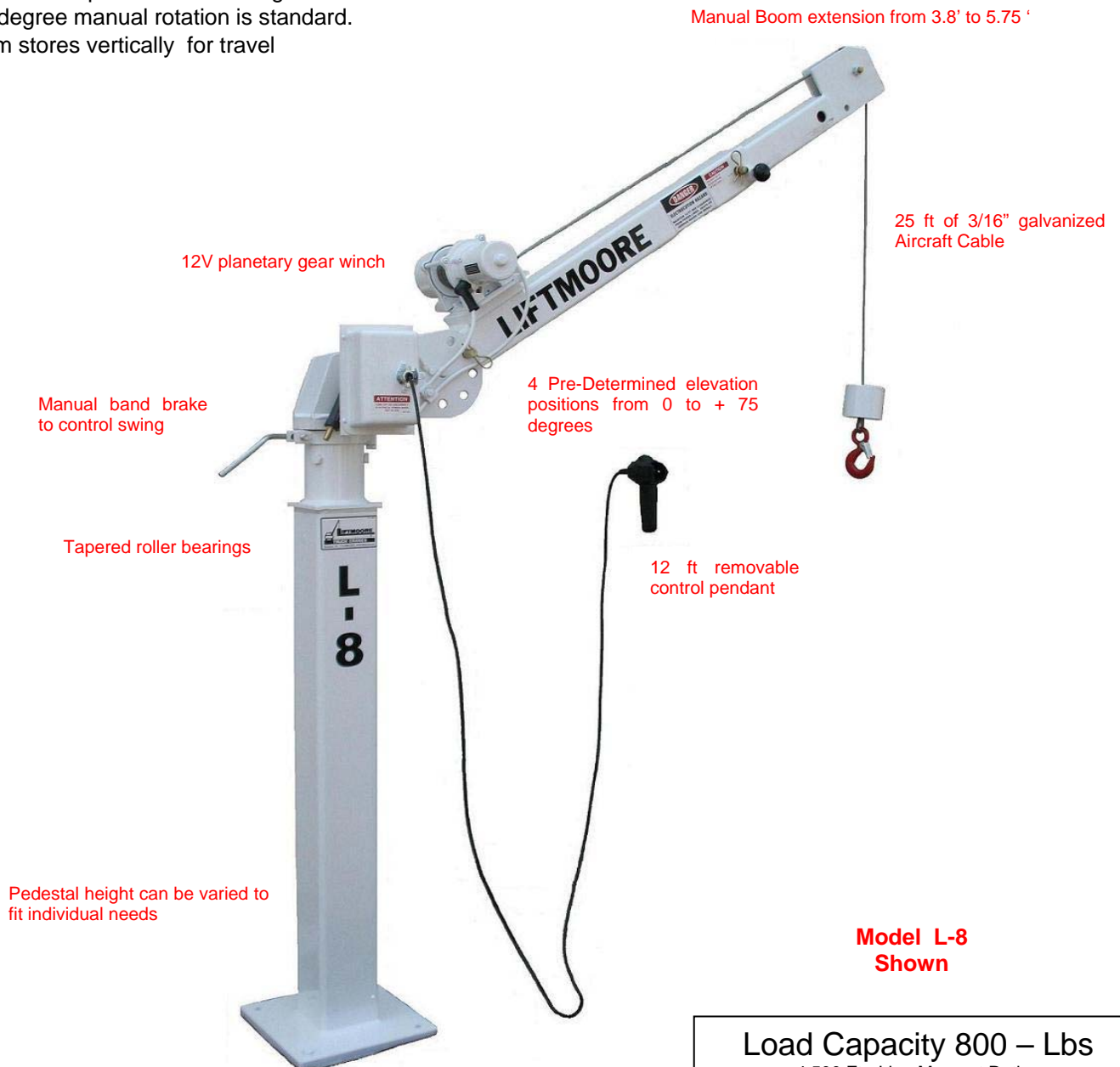


LIFTMOORE L-8 CRANE

4,500 FT.-LB. MOMENT RATING
800 LB. MAXIMUM CAPACITY

- The L-8 crane is ideal for lifting heavy objects into ½ and ¾ ton pickups.
- In the horizontal position the boom telescopes from 3.8 ft to 5.75 ft. with one intermediate position at 4.8 ft.
- 4 Boom elevation positions ranging from horizontal to 75 degrees.
- Maximum lift capacity is 800 lbs. at any boom angle or extension.
- Planetary gear reduction winch for best possible efficient operation.
- 25 ft of 3/16" galvanized Aircraft Cable (4200 lbs. breaking strength)
- Rotates on tapered roller bearings for ease of movement.
- 360 degree manual rotation is standard.
- Boom stores vertically for travel



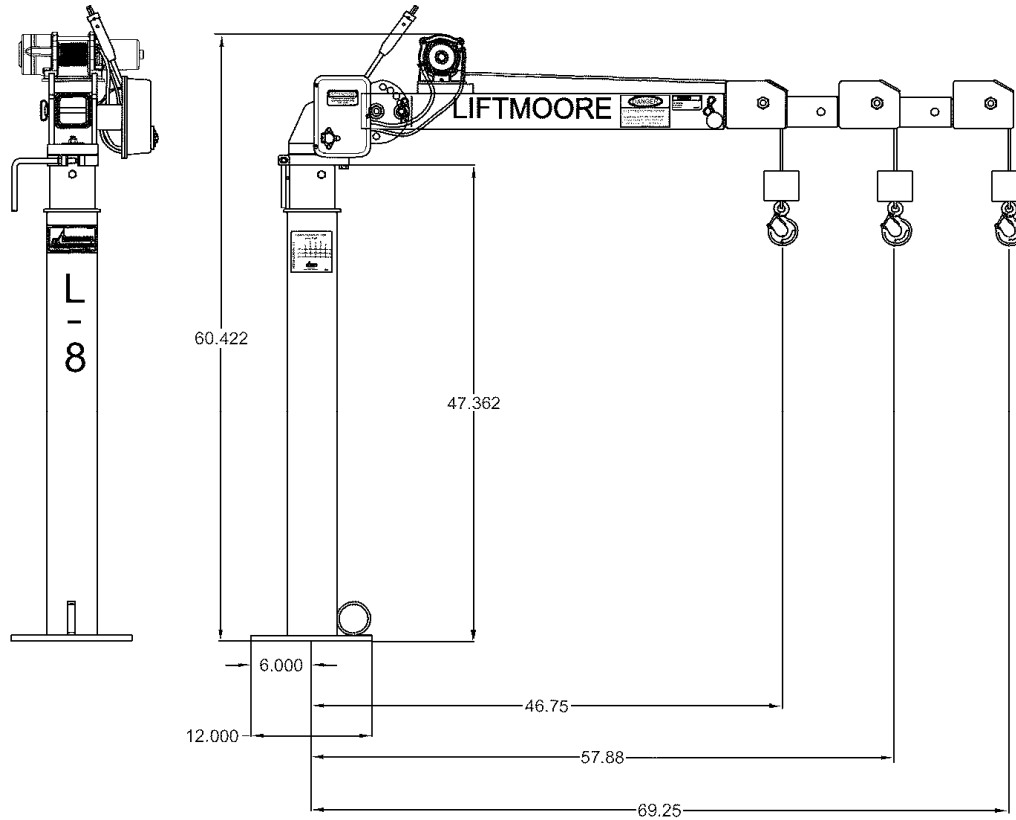
Load Capacity 800 – Lbs
4,500 Ft.- Lbs. Moment Rating

With its 800 lb Max capacity, this compact unit will meet the needs of many. It is capable of lifting its max capacity in any boom position at any elevation.



HOUSTON, TEXAS
FAX: (800) 824-5559 (USA & Canada)
FAX: (713) 688-6324
PHONE: (713) 688-5533
www.liftmoore.com

L-8 SPECIFICATIONS



HOIST WINCH:

The Hoist winch uses a planetary gear drive for most efficient operation. The winch is powered by a permanent magnet electric motor. The single line capacity of the winch is 1000 lbs. An integral mechanical brake is included with the winch.

Winch performance is as follows.

Load (lbs)	Hook speed (Ft. Min.)	Amp Draw
0	30	25
350	25	48
750	22	86

WIRE ROPE and SHEAVES:

The crane is supplied with 25 Ft. of 3/16 in. galvanized aircraft cable with a 4200 Lb. breaking strength. All sheaves meet ANSI requirements.

ROTATION:

The crane is standard with 360 degrees of continuous and unlimited manual rotation. The crane rotates on tapered roller bearings. A manual band brake is included to help control rotation and swing.

BOOM: The standard boom can be manually extended from 3.8 ft. to 5.75 ft. with one intermediate position at 4.8 ft. in the horizontal position. The boom can be set at four positions between horizontal and 75 Degrees. It will store vertically reducing space requirements when not in use.

PENDANT CONTROL:

A 12 Ft. control is supplied with each crane. The function is controlled by a weather resistant momentary contact toggle switch. The pendant control is removable to prevent unauthorized use of the crane. An optional 20 ft. cord is available

ELECTRICAL:

The vehicle's 12-volt DC system powers the crane. A second battery near the crane is advised. This will maintain the voltage at the highest possible level and extend the life of the crane's motor and contactor.

25 Ft. of battery cable with quick disconnects, a 3-Ft. ground wire and a 150 Amp circuit breaker are supplied with each crane.

PEDESTAL:

Pedestal height of 47 In. from base of mounting plate to point of rotation is standard. This can be shortened to 9.25 In. to accommodate mounting on service body compartment top. (Special heights can be produced upon request)

MOUNTING: A minimum 8,600 Lb. GVWR recommended.

Four ½ in. X 2-3/4 In. long grade 8 bolts are supplied. The base plate is a 12-In. square with a 9.5-In square bolt pattern.

ACCESSORIES:

A jackstand or outrigger is necessary on most installations to keep the truck as level as possible and reduce the load on the rotation bearings as well as the truck's springs, axle, wheels and tires.



HOUSTON, TEXAS
 FAX: (800) 824-5559 (USA & Canada)
 FAX: (713) 688-6324
 PHONE: (713) 688-5533
 www.liftmoore.com

Bulletin 465-A 12/30/13

LIFTMOORE L-21 CRANE

6,000 FT.-LB. MOMENT RATING
2,000 LB. MAXIMUM CAPACITY

- The L-21 was designed to allow one man to easily load heavy objects.
- The boom folds for travel taking up minimum bed and overhead space.
- Crane capacity is 2000 lbs. @ 3ft. radius: 1200lbs. @ 5 ft.
- The standard boom telescopes from 3 ft. to 5 ft in the 20 degree position with an intermediate position @ 4 ft.
- Optional boom telescopes from 3'3" to 7'3".
- With a 79" hook height & the standard boom in the 45 degree position, taller objects can be easily loaded.
- 12V DC electric permanent magnet motor powers a planetary gear driven winch for best possible efficiency.
- Only an 87 amp current draw while lifting 1000 Lbs. at 19 feet per minute.
- Rotates on tapered roller bearings for long life and easy movement. 360 degree rotation is standard.
- A manual band brake is used to control boom swing.
- A removable pendant control for easy one man operation is supplied.

Boom telescopes
from 3' to 5'

Three boom
Angle positions

Travel block
included

12V planetary
gear winch

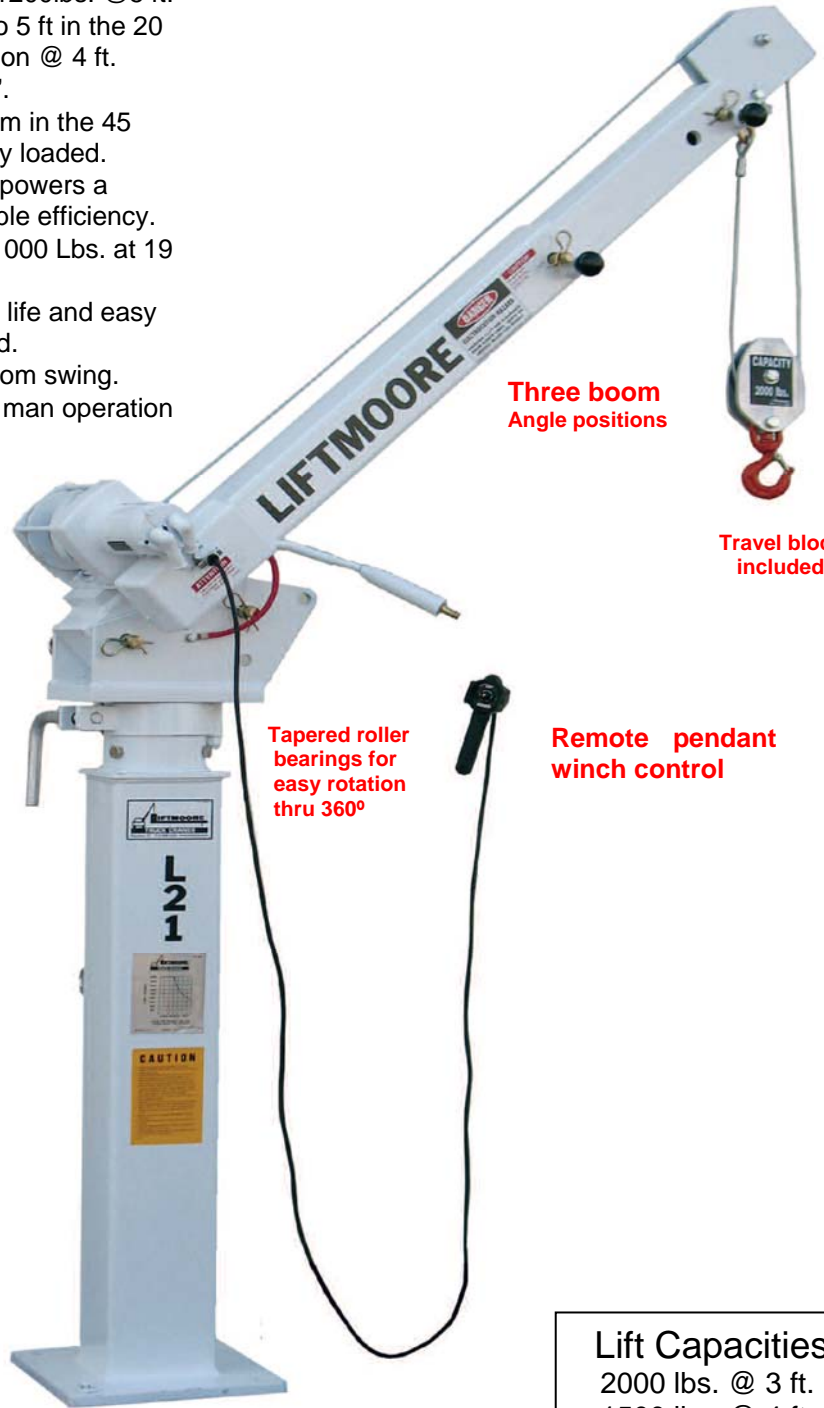
Band Brake

Tapered roller
bearings for
easy rotation
thru 360°

Remote pendant
winch control



Boom folded for traveling



HOUSTON, TEXAS
FAX: (800) 824-5559 (USA & Canada)
FAX: (713) 688-6324
PHONE: (713) 688-5533
www.liftmoore.com

Lift Capacities

2000 lbs. @ 3 ft.
1500 lbs. @ 4 ft.
1200 lbs. @ 5 ft.
1000 lbs. @ 6 ft. *
850 lbs. @ 7 ft. *

*When equipped with
optional boom.

L-21 SPECIFICATIONS

Moment Rating:

6000 Ft. Lbs.

Lift Capacities:

- 2000 Lbs. @ 3 ft.
- 1500 Lbs. @ 4 ft.
- 1200 Lbs. @ 5 ft.
- 1000 Lbs. @ 6 ft. *
- 850 Lbs. @ 7 ft. *

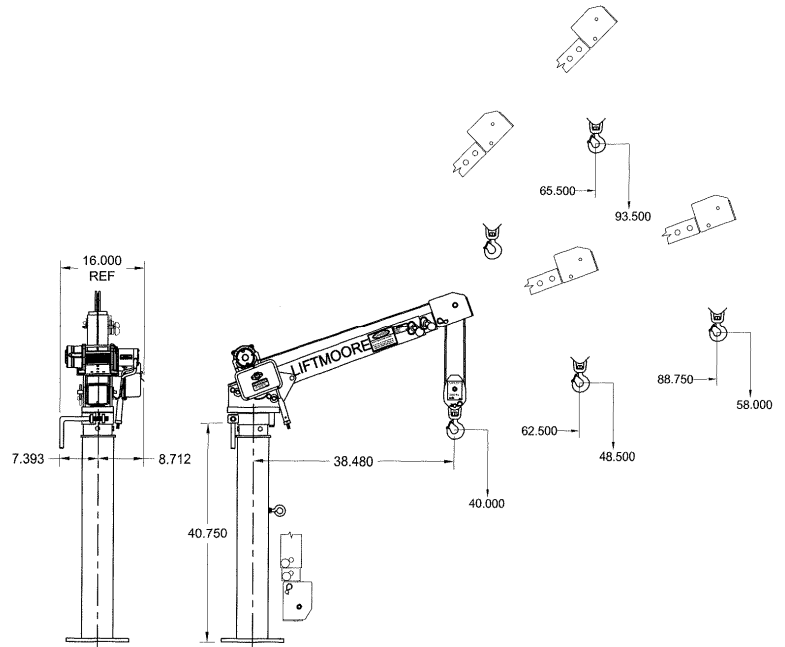
* When equipped with optional boom.

Boom:

Standard length 3' to 5' telescopic
 Optional length 3'3" to 7'3" telescopic
 Two lifting positions at 20 degrees & 45 degrees
 Lowers to vertical position for travel.

Winch:

Planetary gear drive with permanent magnet motor.



Performance

Load (Pounds)	Hook Speed (Ft. Per Minute)	Electrical Load (Amperes)
0	25	22
500	22	55
1000	19	87

Use travel block for double line hookup above 1000 Lbs.

Winch Cable:

3/16 galvanized aircraft X 25' long (4200 lb. breaking strength) is supplied with traveling block.

Remote Pendant:

Control is 12 ft. long and removable from the crane for safety. A momentary toggle switch controls winch up and down. A 20' long control is available as an option.

Battery Cable:

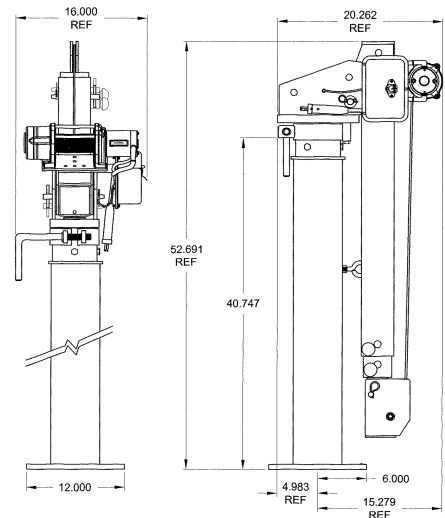
25' of cable is supplied with quick disconnect at crane, A 3' long battery ground wire and a 150 Amp Circuit Breaker.

Rotation:

360 degrees with band brake to control swing.
 The crane rotates on two tapered roller bearings.

Mounting: A minimum 8,600 Lb. GVWR recommended.

4 - 1/2" X 2 1/2" Grade 8 Bolts are supplied.
 Crane mounts on 9 1/2" square bolt pattern, Base plate is 12"x12"



Optional:

Anti-Two Block for L-21-7

Optional Accessories:

- 30328 Jack Stand
- 30330 Drum Tong



HOUSTON, TEXAS
 FAX: (800) 824-5559 (USA & Canada)
 FAX: (713) 688-6324
 PHONE: (713) 688-5533
 www.liftmoore.com

LIFTMOORE L-21W CRANE

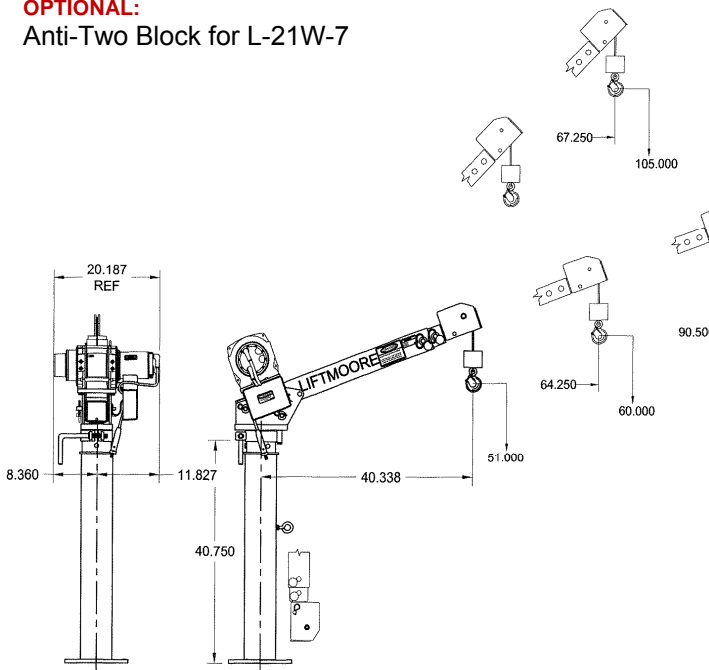
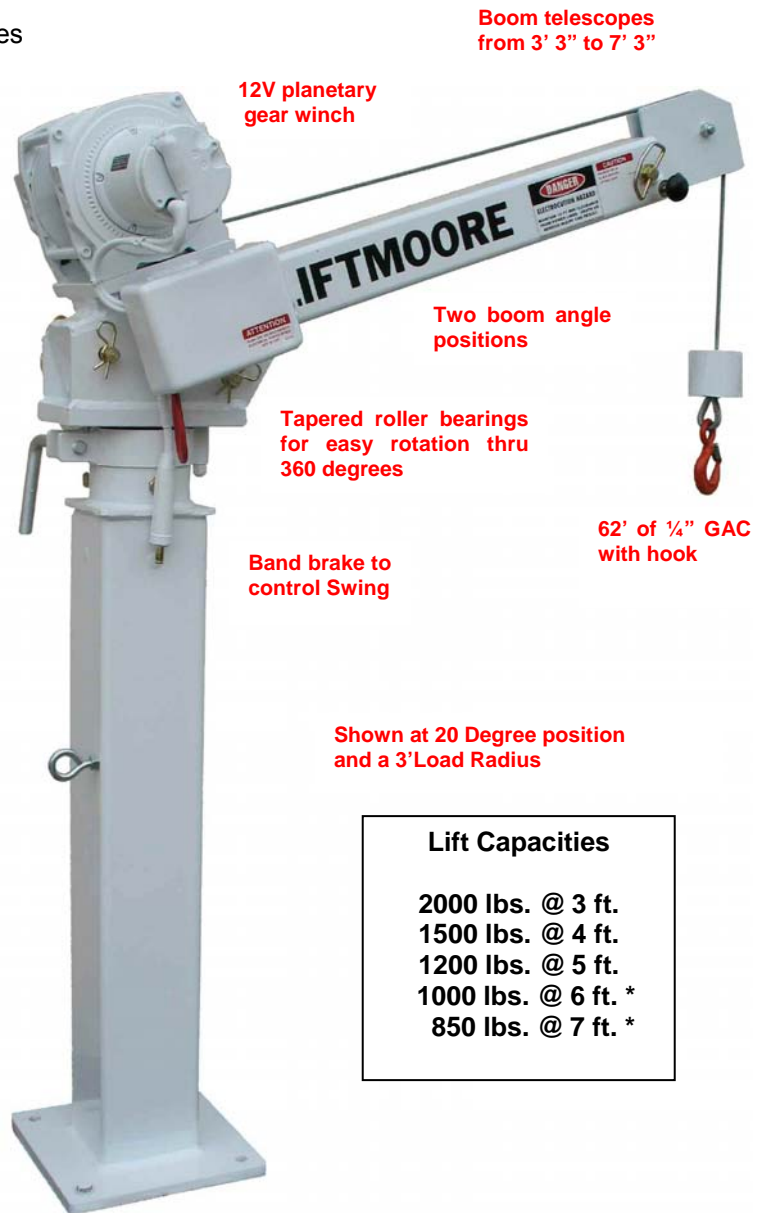
6,000 FT.-LB. MOMENT RATING
2,000 LB. MAXIMUM CAPACITY

- Designed with the Water & Sewer Maintenance Departments in Mind.
- 62' of winch cable raises and lowers pumps out of manholes with ease.
- Boom Folds into a traveling position to take up minimum bed space.
- 2000 Lbs Capacity @ 3 ft. load radius: 850 Lbs @ 7 ft.
- Standard boom telescopes from 3' 3". to 7' 3". in two stages with an intermediate position in each stage.
- Versatility is built into this crane with it's two standard boom positions of 20 and 45 degrees.
- A hook height of 105" above mounting surface at 45 degrees and full extension.
- Rotates on tapered roller bearings for long life and easy movement.
- Full 360-degree rotation is standard.
- A manual brake band is used to control swing of the boom.
- A removable remote pendant controls the lifting function
- One man can safely handle heavy objects with this Crane.

A minimum 8,600 Lb. GVWR recommended.

OPTIONAL:

Anti-Two Block for L-21W-7



Folded height of crane is 54"

Shown at 20 Degree position and a 3' Load Radius

Lift Capacities	
2000 lbs.	@ 3 ft.
1500 lbs.	@ 4 ft.
1200 lbs.	@ 5 ft.
1000 lbs.	@ 6 ft. *
850 lbs.	@ 7 ft. *

Winch:

Planetary gear drive
With permanent magnet 2.7 HP Motor

Load (Pounds)	Performance	
	Hook Speed (Feet per Minute)	Electrical (Amperes)
1000	13.1	64
2000	11.9	115



HOUSTON, TEXAS
FAX: (800) 824-5559 (USA & Canada)
FAX: (713) 688-6324
PHONE: (713) 688-5533
www.liftmoore.com

Back Page is Left Blank



HOUSTON, TEXAS
FAX: (800) 824-5559 (USA & Canada)
FAX: (713) 688-6324
PHONE: (713) 688-5533
www.liftmoore.com