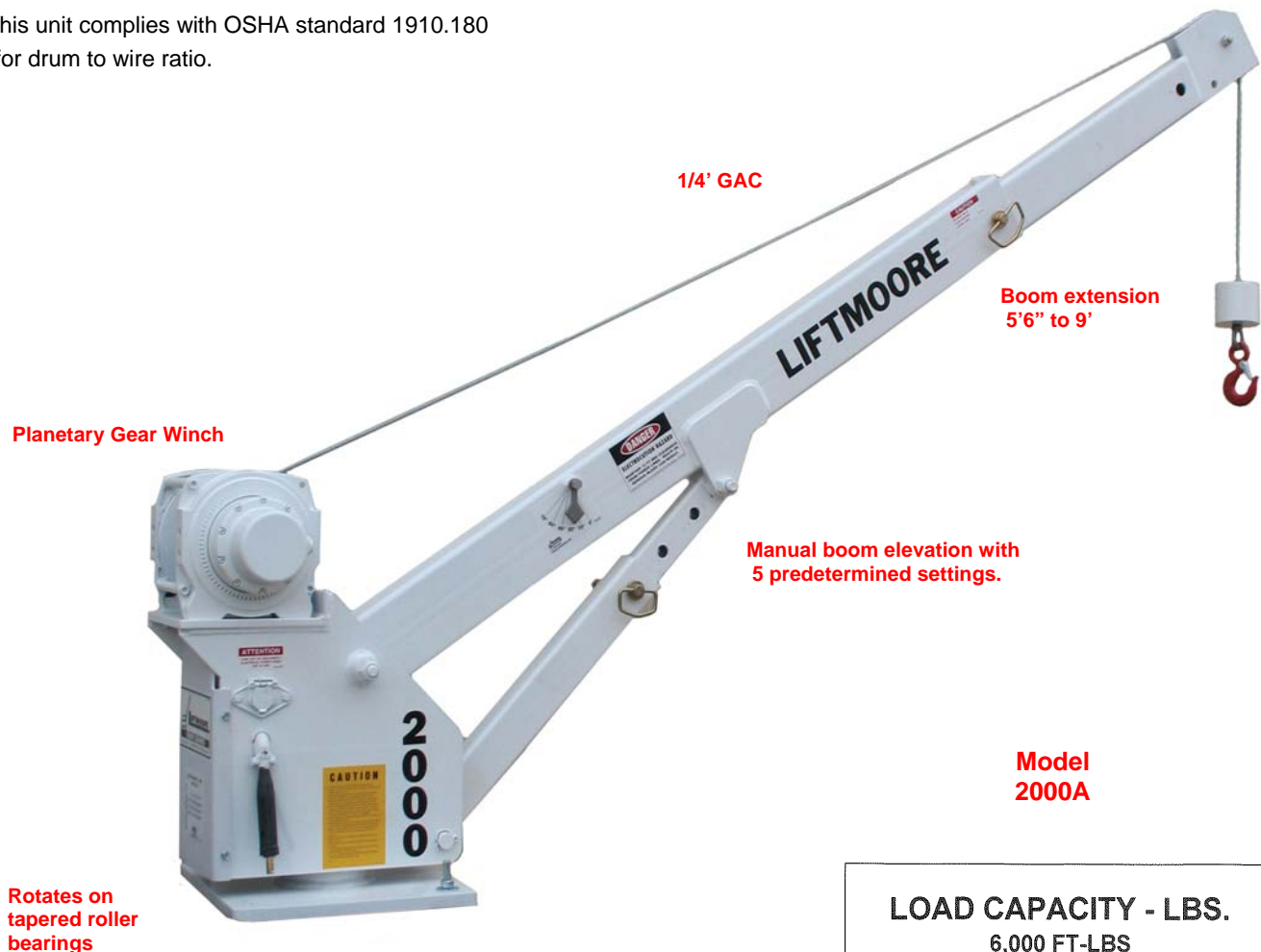


LIFTMOORE 2000 CRANE


6,000 FT.-LB. MOMENT RATING
2,000 LB. MAXIMUM CAPACITY.

- The Model 2000 Liftmoore crane with its 2,000 lb capacity is designed for one man operation.
- A manually telescoping boom from 5' 6" to 9' is standard.
- 360 degree manual rotation is standard on the 2000A. The crane rotates on tapered roller bearings. A friction brake helps to control boom swing.
- Boom elevation is manual with 5 predetermined settings.
- The efficient planetary gear winch is powered by a 12-Volt battery driven permanent magnet motor for best possible efficiency.
- This unit complies with OSHA standard 1910.180 for drum to wire ratio.



LOAD CAPACITY - LBS.	
6,000 FT.-LBS	
	0° 16° 33° 51° 74°
5'4"	1111 1154 1333 1818 2000
7'2"	833 882 1017 1395 2000
8'9"	674 706 822 1132 2000

BOOM LENGTH - FT.

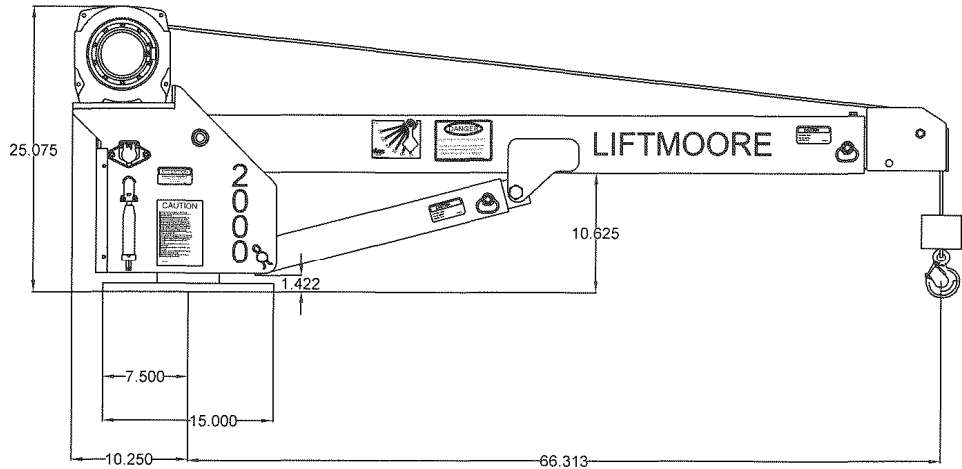
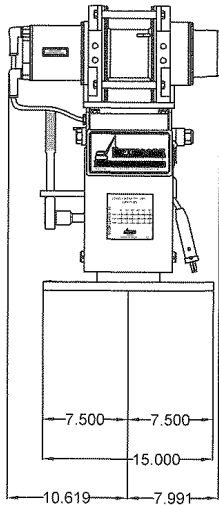

 713-688-5533
 WWW.LIFTMOORE.COM

22791



HOUSTON, TEXAS
 FAX: (800) 824-5559 (USA & Canada)
 FAX: (713) 688-6324
 PHONE: (713) 688-5533
 www.liftmoore.com

2000 SPECIFICATIONS



MOMENT RATING:
6,000 Ft.-Lbs.

LIFT CAPACITIES
2000 lbs. @ 3 Ft.
1200 lbs. @ 5 Ft.
1000 lbs. @ 6 Ft.
857 lbs. @ 7 Ft.
660 lbs. @ 9 Ft.

HOIST WINCH:
The hoist winch uses a planetary gear drive for best possible efficiency. A 2.7 HP permanent magnet electric motor powers the winch. Single line capacity of the winch is 2000 Lbs. Load is controlled by a load apportioned mechanical brake located in the winch drum. Ratio between winch drum and wire rope meets ANSI B30.5 requirements.

First layer performance of the winch is as follows:

Load-Lbs	Hook Speed-Ft/ Min.	Electrical-Amps @ 12VDC
1000	13.1	64
2000	11.9	115

WIRE ROPE and SHEAVES:
The crane is supplied with 40 Ft. of ¼ in. galvanized aircraft cable. Minimum breaking strength of the rope is 7000 lbs. The wire rope is outside of the boom and visible for the operators continual inspection.

BOOM:
Standard boom length is 5.5 ft. manually telescoping to 9 Ft. with an intermediate position.

ROTATION SYSTEM:
The crane rotates 360 degrees on tapered roller bearings. A manual band brake is provided to help control swing.

REMOTE PENDANT:
A 12-Ft. long remote pendant is provided for control of the winch operation and is removable to prevent unauthorized use of the crane.

LOAD SENSOR (optional)
A load-limiting sensor can be installed which will shut off winch up movement when an overload is detected. The sensor will reset after the load is lowered.

POWER SOURCE:
The crane is powered by the truck's 12-volt DC system. A second battery is recommended to keep the voltage as high as possible and should be installed in parallel with the vehicle's battery. A Group 31"DEEP CYCLE" battery is recommended. 25 Ft of # 4 battery cable with quick disconnect is included along with a 3-ft ground wire and 150 amp circuit breaker.

MOUNTING: A minimum 9,000 Lb. GVWR recommended.
Four 0.50" X3.0" long Grade 8 hex head cap screws and lock nuts are provided. Mounting plate is 15" square with a 12" square bolt pattern.

JACKSTAND:
An optional Jackstand is recommended for stability. The Jackstand keeps the truck level when the load is lifted and helps to reduce the load on the crane's rotation mechanism and the truck's suspension.



HOUSTON, TEXAS
FAX: (800) 824-5559 (USA & Canada)
FAX: (713) 688-6324
PHONE: (713) 688-5533
www.liftmoore.com

LIFTMOORE 206EL CRANE

6,500 FT.-LB. MOMENT RATING
2,000 LB. MAXIMUM CAPACITY

The 206EL crane incorporates power boom elevation into its compact design allowing for changing of the boom angle while under load. This feature allows picking up an object at a greater distance and being able to change the load radius and spot the load where it is needed. With its 2000 lbs. maximum capacity lift @ 3 ft. this crane is the choice of many.

- Standard boom length is 5.5 Ft. with a manual pull out to 9 Ft. with one intermediate position.
- Hydraulic boom elevation from 0 degrees to +75 degrees is standard on this model.



Model 206EL

LOAD CAPACITY - LBS. 6,500 FT-LBS

BOOM LENGTH - FT.	LOAD CAPACITY - LBS.					
	0°	15°	30°	45°	60°	75°
5'6"	1182	1224	1365	1671	2000	2000
7'3"	897	928	1035	1268	1793	2000
9'0"	722	748	834	1021	1444	2000



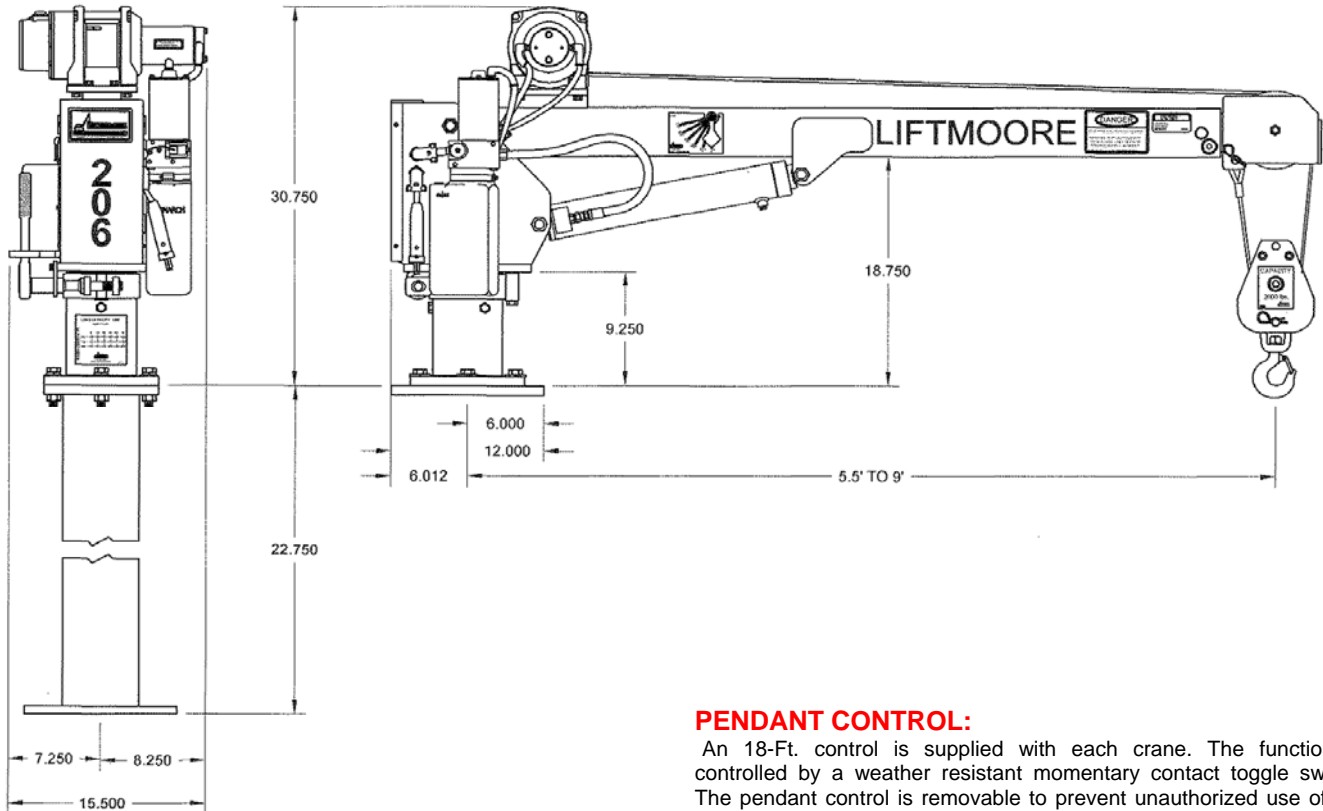
713-688-5533
WWW.LIFTMOORE.COM

22373



HOUSTON, TEXAS
FAX: (800) 824-5559 (USA & Canada)
FAX: (713) 688-6324
PHONE: (713) 688-5533
www.liftmoore.com

206EL SPECIFICATIONS



HOIST WINCH:

The Hoist winch uses a planetary gear drive for most efficient operation. The winch is powered by a permanent magnet electric motor. The single line capacity of the winch is 1200 lbs. An integral mechanical brake is included with the winch.

Winch performance is as follows.

Load (lbs)	Hook speed (Ft. Min.)	Amp Draw
0	25	22
600	21	63
900	19	84

* Use traveling block double line, for loads above 1000 lbs.

WIRE ROPE and SHEAVES:

The crane is supplied with 35 Ft. of 3/16 in. galvanized aircraft cable with a 4200 Lb. breaking strength. All sheaves meet ANSI requirements.

ROTATION: The crane is standard with 360 degrees of continuous and unlimited manual rotation. The crane rotates on tapered roller bearings. A manual band brake is included to help control rotation and swing. The band brake is applied using a reversible hand ratchet.

BOOM: The standard boom length in the horizontal position is 5.5 Ft with a manually telescoping section to 9.0 Ft. An Intermediate boom position is included.

A single acting hydraulic cylinder elevates the boom. An electric-hydraulic pump powers the cylinder from 0 degrees to +75 degrees. A load-limiting sensor is standard on the model 206EL.

PENDANT CONTROL:

An 18-Ft. control is supplied with each crane. The function is controlled by a weather resistant momentary contact toggle switch. The pendant control is removable to prevent unauthorized use of the crane.

ELECTRICAL:

The vehicle 12-volt DC system powers the crane. A second battery near the crane is advised. This will maintain the voltage at the highest possible level and extend the life of the cranes motors and solenoids.

A double pole electric contactor reverses the winch motor. 25 Ft. of battery cable with quick disconnects: a 3-Ft. ground wire and a 150 Amp. Circuit breaker is supplied with each crane.

PEDESTAL:

A standard pedestal height of 32 In. from base of mounting plate to point of rotation is standard. This can be shortened to 9.25 in. to accommodate mounting on service body compartment top. (Special heights can be produced upon request)

MOUNTING: A minimum 8,600 Lb. GVWR recommended.

Four ½ in. X 2-3/4 In. long grade 8 bolts are supplied. The base plate is a 12-in. square with a 9.5-in square bolt pattern.

BOOM REST:

A boom rest is required to support the boom whenever the vehicle is in motion. Liftmoore can supply your boom rest, its just one of the many options available.

ACCESSORIES:

A jackstand or outrigger is necessary on most installations to keep the truck as level as possible and reduce the load on the rotation bearings as well as the trucks springs, axels, wheels and tires.



HOUSTON, TEXAS
 FAX: (800) 824-5559 (USA & Canada)
 FAX: (713) 688-6324
 PHONE: (713) 688-5533
www.liftmoore.com

LIFTMOORE 206R CRANE

6,500 FT.-LB. MOMENT RATING
2,000 LB. MAXIMUM CAPACITY

The 206R crane is designed for lifting loads onto ½ and ¾ ton trucks. Its power rotation feature and remote pendant control make this an ideal crane for handling heavy objects with a one-man operation. With its 2,000 lbs. maximum capacity lift @ 3-ft and its extended 9-ft boom reach, it makes a tough job safer and easier.

- 360 degree continuous, unlimited 12V D.C. Powered Rotation.
- Standard boom length is 5.5 Ft. with a manual pull out to 9 Ft. with one intermediate position.
- Gas spring assisted manual boom elevation from 0 degrees to +75 degrees is standard on this model.



Boom Manually Extends from 5.Ft. to 9 Ft.

3/16' GAC

Traveling Block w/hook & Safety Latch. Meets ANSI Standard

Manual Elevation with Gas Spring Assist

12V DC Planetary Gear Winch

Model 206R Shown

Remote Pendant Control

Electric Powered Rotation

LOAD CAPACITY - LBS. 6,500 FT-LBS

BOOM LENGTH - FT.

	0°	15°	30°	45°	60°	75°
5'6"	1182	1224	1365	1671	2000	2000
7'3"	897	928	1035	1268	1793	2000
9'0"	722	748	834	1021	1444	2000



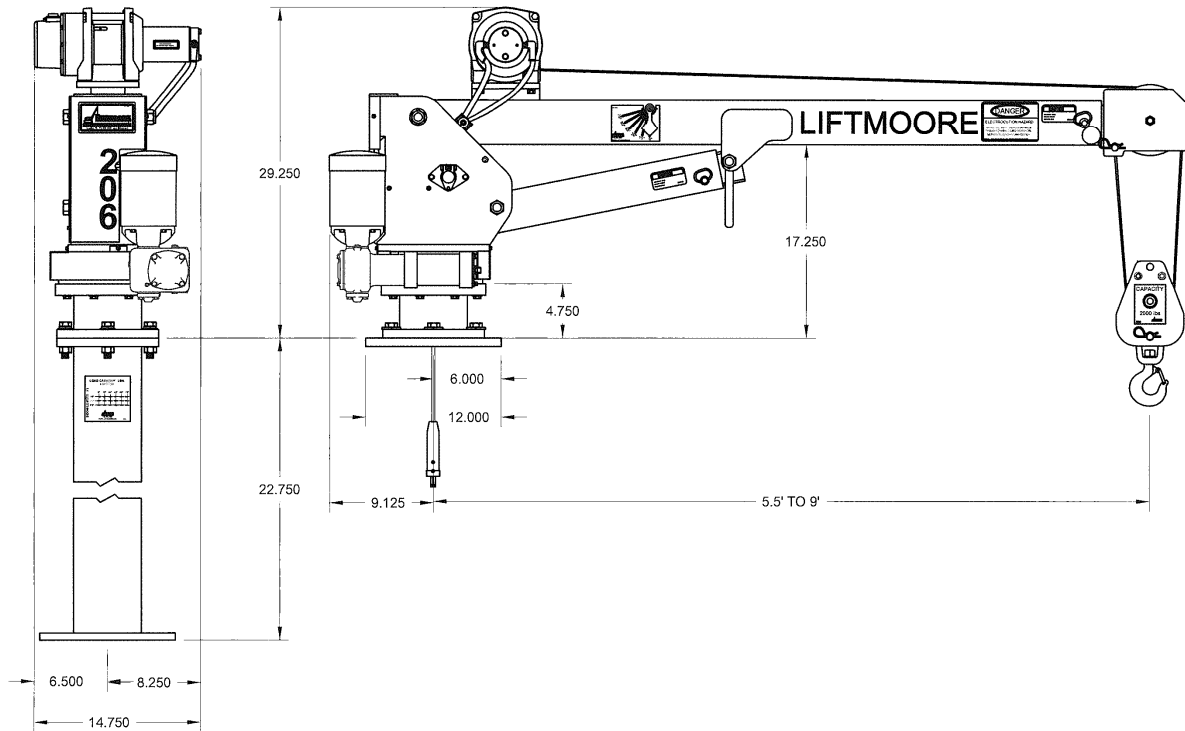
713-688-5533
WWW.LIFTMOORE.COM

22373



HOUSTON, TEXAS
FAX: (800) 824-5559 (USA & Canada)
FAX: (713) 688-6324
PHONE: (713) 688-5533
www.liftmoore.com

206R SPECIFICATIONS



HOIST WINCH:

The Hoist winch uses a planetary gear drive for most efficient operation. The winch is powered by a permanent magnet electric motor. The single line capacity of the winch is 1200 lbs. An integral mechanical brake is included with the winch.

Winch performance is as follows.

Load (lbs)	Hook speed (Ft./ Min.)	Amp Draw
0	25	22
600	21	63
900	19	84

* Use travels block double line, for loads above 1000 Lbs.

WIRE ROPE and SHEAVES:

The crane is supplied with 35 Ft. of 3/16 in. galvanized aircraft cable with a 4200 Lb. breaking strength. All sheaves meet ANSI requirements. A travel block is included for two-part line.

ROTATION:

The crane is standard with 360 degrees of continuous and unlimited 12VDC-power rotation. The crane rotates on an external gear bearing slewing ring.

BOOM: The standard boom length in the horizontal position is 5.5 Ft. with a manually telescoping section to 9.0 Ft. An Intermediate boom position is included.

Gas Spring assisted manual boom elevation from 0 degrees to +75 degrees. A telescoping tube assembly with 5 predetermined settings holds the boom in place.

PENDANT CONTROL:

A 12-Ft. control is supplied with each crane. Each function is controlled by a weather resistant momentary contact toggle switch. The pendant control is removable to prevent unauthorized use of the crane.

ELECTRICAL:

The vehicle 12-volt DC system powers the crane. A second battery near the crane is advised. This will maintain the voltage at the highest possible level and extend the life of the cranes motors and solenoids.

A double pole electric contactor reverses the winch motor. 25 Ft. of battery cable with quick disconnects: a 3-Ft. ground wire and a 150Amp. Circuit breaker is supplied with each crane.

PEDESTAL:

A standard pedestal height of 27 In. from base of mounting plate to point of rotation is standard. This can be shortened to 5.5 in. to accommodate mounting on service body compartment top. (Special heights can be produced upon request)

MOUNTING: A minimum 8,600 Lb. GVWR recommended.

Four ½ in. X 2-3/4 In. long grade 8 bolts are supplied. The base plate is a 12-In. square with a 9.5-In square bolt pattern.

ACCESSORIES:

A jackstand or outrigger is necessary on most installations to keep the truck as level as possible and reduce the load on the rotation bearings as well as the trucks springs, axels, wheels and tires.



HOUSTON, TEXAS
 FAX: (800) 824-5559 (USA & Canada)
 FAX: (713) 688-6324
 PHONE: (713) 688-5533
 www.liftmoore.com

Bulletin 460-A 12/30/13

LIFTMOORE 206REL CRANE

6,500 FT.-LB. MOMENT RATING
2,000 LB. MAXIMUM CAPACITY

With its 6500 Ft.-Lb. size range featuring both power rotation and power boom elevation. This crane is perfectly suited for mounting on ¾ ton trucks where the safety of power rotation and the convenience of power elevation are required.

- Hydraulic boom elevates from 0 degrees to +75 degrees by means of a double acting cylinder that incorporates an integrally mounted counterbalance valve for safest operation.
- Rotation is unlimited on a ball bearing slewing ring. A low speed high torque hydraulic motor driving a worm type gear set powers the rotation.



Boom Manually
Extends from
5.5 Ft. to 9 Ft.

3/16 GAC

Traveling Block w/hook
& Safety Latch.
Meets ANSI Standard

12V DC Planetary
Gear Winch

Power Elevation

Power Rotation

Electric Hydraulic
Pump

Model
206REL
Shown

Pedestal Height
can varied to meet your
mounting requirements

LOAD CAPACITY - LBS. 6,500 FT-LBS

BOOM LENGTH - FT.

	0°	15°	30°	45°	60°	75°
5'6"	1182	1224	1365	1671	2000	2000
7'3"	897	928	1035	1268	1793	2000
9'0"	722	748	834	1021	1444	2000



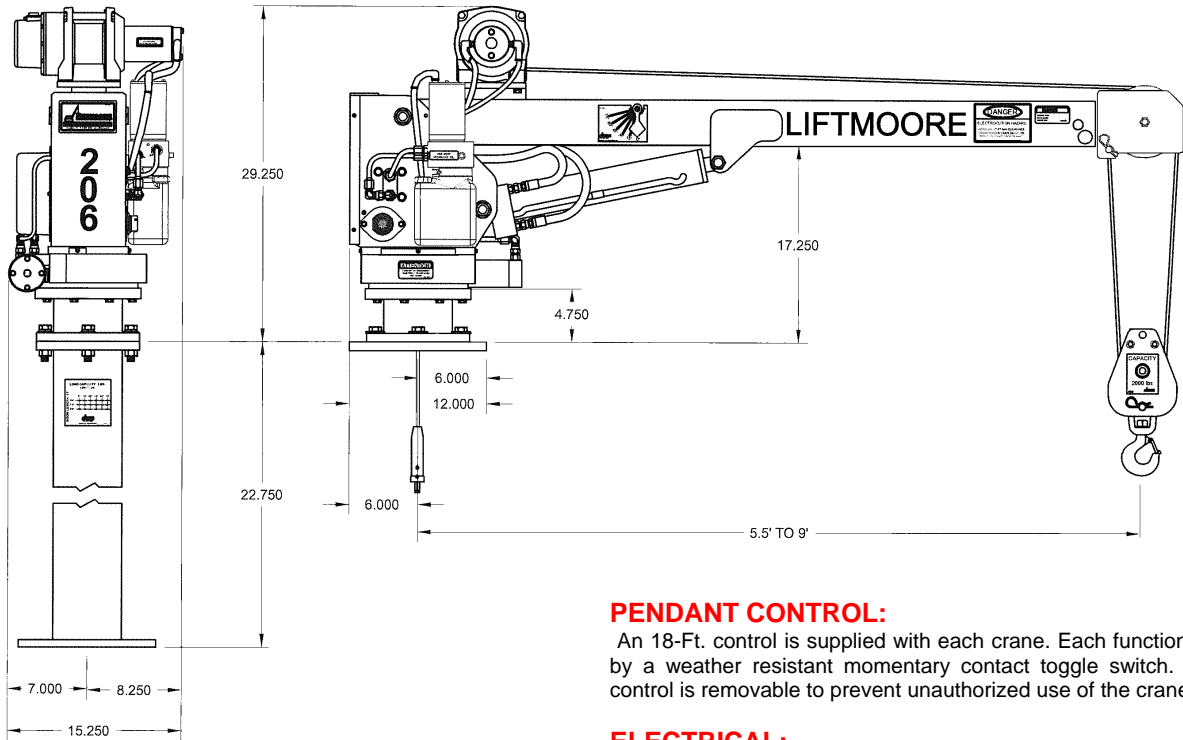
713-688-5533
WWW.LIFTMOORE.COM

22373



HOUSTON, TEXAS
FAX: (800) 824-5559 (USA & Canada)
FAX: (713) 688-6324
PHONE: (713) 688-5533
www.liftmoore.com

206REL SPECIFICATIONS



HOIST WINCH:

The Hoist winch uses a planetary gear drive for most efficient operation. The winch is powered by a permanent magnet electric motor. The single line capacity of the winch is 1200 lbs. An integral mechanical brake is included with the winch.

Winch performance as follows.

Load (lbs)	Hook speed (Ft./ Min.)	Amp Draw
0	25	22
600	21	63
900	19	84

* Use travel block double line, for loads above 1000 Lbs.

WIRE ROPE and SHEAVES:

The crane is supplied with 35 Ft. of 3/16 in. galvanized aircraft cable with a 4200 Lb. breaking strength. All sheaves meet ANSI requirements.

ROTATION:

The hydraulic powered rotation is continuous and unlimited. The crane rotates on an external gear ball bearing slewing ring and is driven by a low speed high torque hydraulic motor.

BOOM: The standard boom length in the horizontal position is 5.5 Ft with a manually telescoping section to 9.0 Ft. Boom is elevated from 0 to +75 degrees by a double acting hydraulic cylinder. For safest operation the cylinder incorporates an integral counterbalance valve that will hold the load in the event of hose failure

HYDRAULIC SYSTEM:

A 12-volt electric-hydraulic pump powers both boom elevation and crane rotation. Four way directional control valves are used to control the hydraulically driven functions.

PENDANT CONTROL:

An 18-Ft. control is supplied with each crane. Each function is controlled by a weather resistant momentary contact toggle switch. The pendant control is removable to prevent unauthorized use of the crane.

ELECTRICAL:

The vehicle 12-volt DC system powers the crane. A second battery near the crane is advised. This will maintain the voltage at the highest possible level and extend the life of the crane's motors and solenoids.

A double pole electric contactor reverses the winch motor. The electric-hydraulic pump motor is controlled by a single pole solenoid. 25 Ft. of battery cable with quick disconnects, a 3-Ft. ground wire, quick disconnect switch, and a 150 Amp circuit breaker is supplied with each crane.

LOAD SENSOR:

A load sensing pressure switch is mounted on the base of the elevation cylinder. The switch will shut down winch up and boom down when an overload is detected. The load sensor will reset after the load is reduced. The pressure relief setting in the pump limits boom up.

PEDESTAL:

A standard pedestal height of 27 In. from base of mounting plate to point of rotation is standard. This can be shortened to 5.5 in. to accommodate mounting on service body compartment top. (Special heights can be produced upon request)

MOUNTING: A minimum 9,00 Lb. GVWR recommended.

Four ½ in. X 2-3/4 In. long grade 8 bolts are supplied. The base plate is a 12-in. square with a 9.5-In square bolt pattern.

BOOM REST:

A boom rest is required to support the boom whenever the vehicle is in motion. Liftmoore can supply your boom rest, its just one of the many options available.

OPTIONAL: Anti-Two Block

ACCESSORIES:

A jackstand or outrigger is necessary on most installations to keep the truck as level as possible and reduce the load on the rotation bearings as well as the truck's springs, axels, wheels and tires.



HOUSTON, TEXAS
 FAX: (800) 824-5559 (USA & Canada)
 FAX: (713) 688-6324
 PHONE: (713) 688-5533
 www.liftmoore.com

Bulletin 461-A 12/30/13

LIFTMOORE 208EL CRANE

8,100 FT.-LB. MOMENT RATING
2,000 LB. MAXIMUM CAPACITY.

- With its longer boom the 208EL is ideal for your light duty lifting where greater reach is required.
- A power elevation cylinder provides control of the load radius. An electric-hydraulic pump raises the boom angle from -5 to + 75 degrees. The boom is lowered by gravity with a velocity fuse for overrunning protection in case of hose failure.
- 360 degree Manual rotation is standard on the 208EL.
- A two section boom manually extends from 6 ft. to 14 ft, with an Intermediate position in both sections.
- The 208EL complies with OSHA standard 1910.180 including drum/wire ratios and SAE J1063 strain gage testing required by the OSHA standard.
- A load sensor is included as standard equipment to limit winch up and boom down.

Extension from 6-10-14 ft.

Sheave meets ANSI Standard

1/4" GAC wire rope

Downhaul Pickle Weight

Hook with safety latch

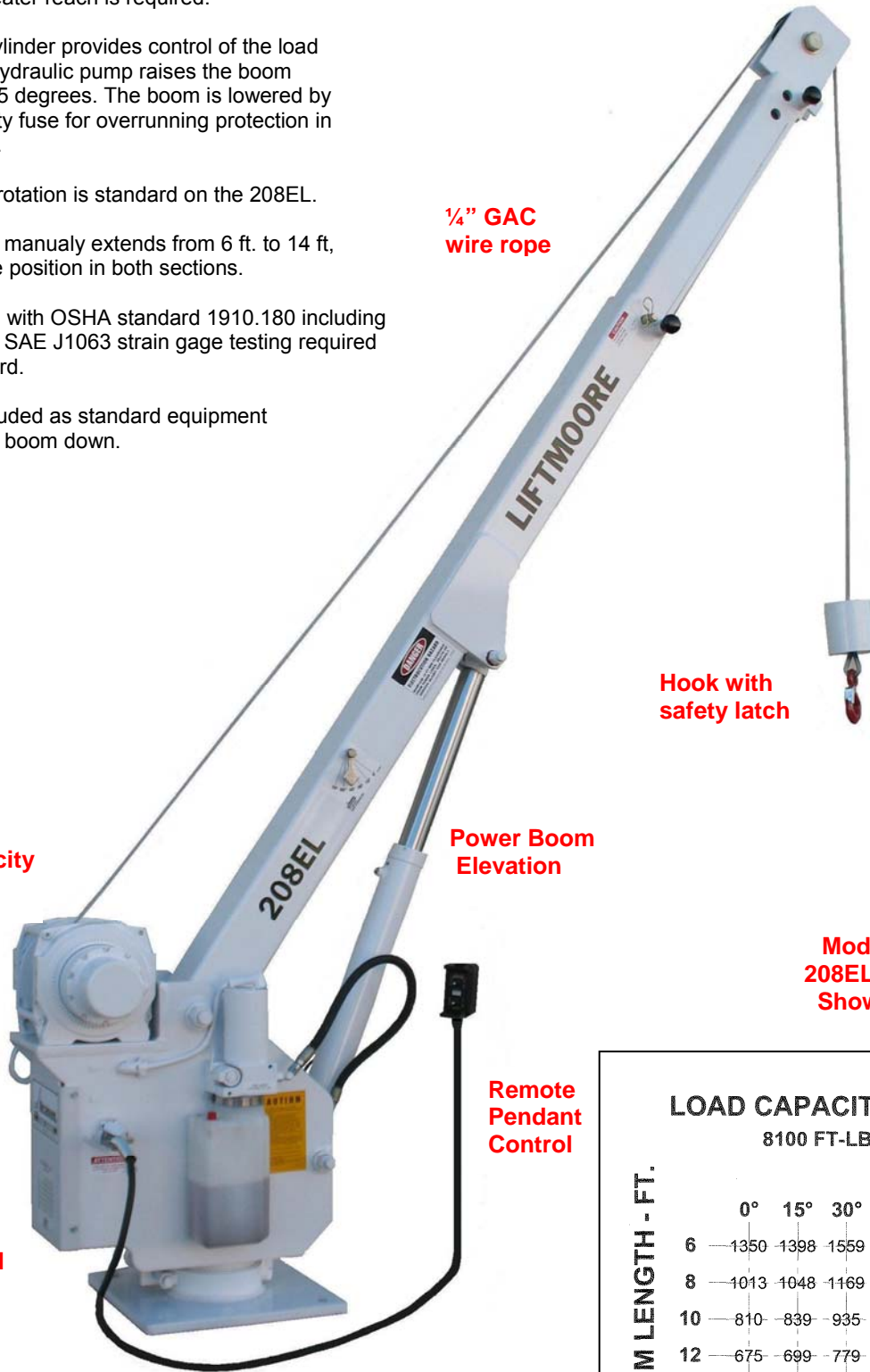
2000 Lb single line capacity Planetary Gear Winch

Power Boom Elevation

Model 208EL-14 Shown

Remote Pendant Control

Rotates on Tapered Roller Bearings



LOAD CAPACITY - LBS. 8100 FT.-LBS

BOOM LENGTH - FT.	LOAD CAPACITY - LBS.					
	0°	15°	30°	45°	60°	75°
6	1350	1398	1559	1909	2000	2000
8	1013	1048	1169	1432	2000	2000
10	810	839	935	1146	1620	2000
12	675	699	779	955	1350	2000
14	579	599	668	818	1157	2000

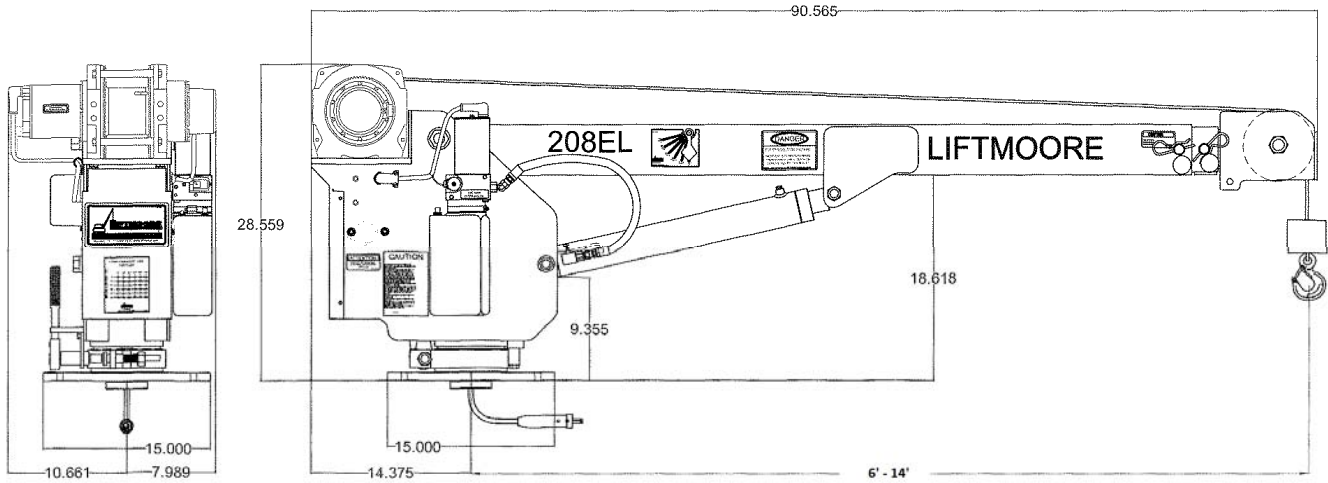


HOUSTON, TEXAS
FAX: (800) 824-5559 (USA & Canada)
FAX: (713) 688-6324
PHONE: (713) 688-5533
www.liftmoore.com


713-688-5533
WWW.LIFTMOORE.COM

P/N 24609

208EL SPECIFICATIONS



MOMENT RATING:
8,100 Ft.-Lbs.

LIFT CAPACITIES:
2000 Lbs. @ 4 Ft.
1350 Lbs. @ 6 Ft.
810 Lbs. @ 10 Ft.
579 Lbs. @ 14 Ft.

BOOM:
Two section manually extend boom from 6 ft. to 14 Ft.,
An intermediate position is provided in each section

Boom is elevated by a single acting hydraulic cylinder. Boom is lowered by gravity. Cylinder includes a velocity fuse for safety in the event of hose failure.

HOIST WINCH:
The hoist winch uses a planetary gear drive for best possible efficiency. A 2.7 HP permanent magnet electric motor powers the winch. Load is controlled by a load apportioned mechanical brake located in the winch drum. Ratio between winch drum and wire rope meets ANSI B30.5 requirements.

First layer performance of the winch is as follows:

Load-Lbs	Hook Speed-Ft/ Min.	Electrical-Amps @ 12VDC
1000	13.1	64
2000	11.9	115

WIRE ROPE and SHEAVES:
The crane is supplied with 62 Ft. of ¼ in. galvanized aircraft cable. Minimum breaking strength of the rope is 7000 lbs. The wire rope is outside of the boom and visible for operators continual inspection. All sheaves meet ANSI requirements.

HYDRAULIC SYSTEM:
A 12 volt D.C. electric hydraulic pump powers the crane's elevation on the 208EL.

ROTATION SYSTEM:
Rotation is 360 degrees continuous and unlimited. The Crane rotates on two 3.75" ID tapered roller bearings for smooth, long lasting operation. A band brake to help control swing is standard.

REMOTE PENDANT CONTROL:
An 18-Ft. long remote pendant is provided for control of each powered function. The Pendant control is removable from the crane to prevent unauthorized use of the crane.

LOAD SENSOR
A load-limiting sensor is supplied as standard. This sensor will shut down hoist up & boom down when an overload is detected. The sensor will reset after the load is lowered. Boom Up is limited by the Pressure relief setting in the pump.

POWER SOURCE:
Crane is powered by the truck's 12 volt DC system. A second battery is recommended to keep the voltage as high as possible and should be installed in parallel with the vehicle's battery. A Group 31"DEEP CYCLE" battery is recommended. 25 Ft of 1/0 battery cable with quick disconnect is included along with a 3-ft. battery ground wire (for grounding factory battery to truck frame), 150 amp circuit breaker and master cut off switch.

MOUNTING: A minimum 9,000 Lb. GVWR recommended.
An 8,600-Lb or larger GVWR chassis is recommended. Four 0.5" X 2.5" long Grade 8 hex head cap screws and lock nuts are provided. Mounting plate is 15" square with a 12" square bolt pattern.

OPTIONAL: Anti-Two Block for 208EL-14

OUTRIGGERS or JACKSTAND
An optional Jackstand or Outrigger is needed for stability and to reduce the load on the crane's rotation mechanism and the truck's suspension.



HOUSTON, TEXAS
FAX: (800) 824-5559 (USA & Canada)
FAX: (713) 688-6324
PHONE: (713) 688-5533
www.liftmoore.com

Bulletin 469-A 12/30/13

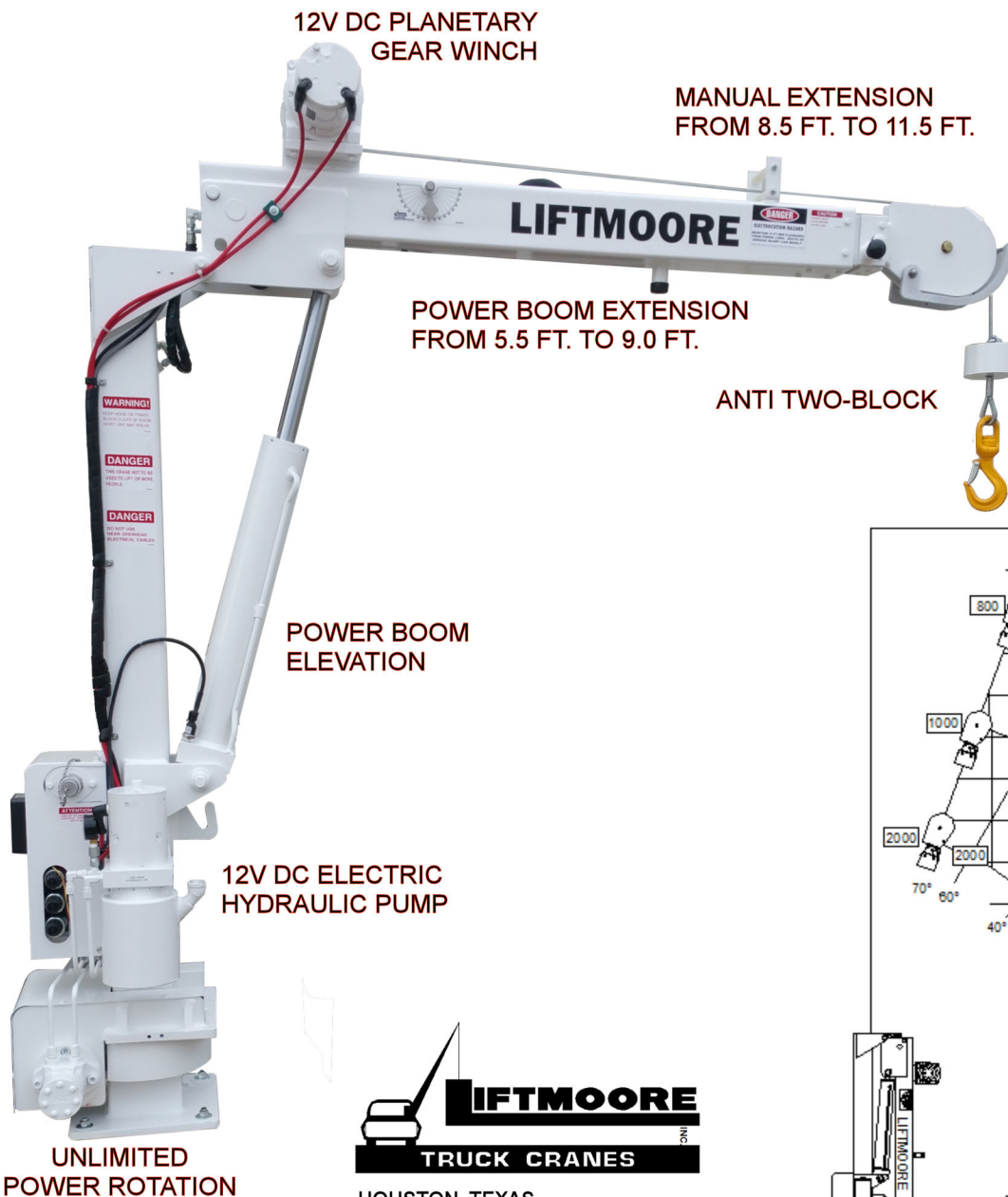
LIFTMOORE LA6K CRANE

6,500 FT.-LB. MOMENT RATING
2,000 LB. MAXIMUM CAPACITY

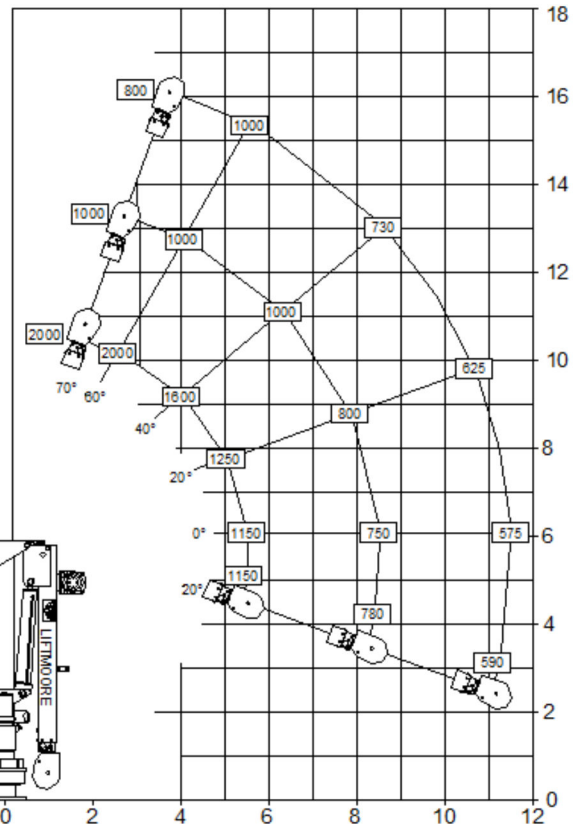
FOLDED FOR TRAVEL

With its unique power folding boom this crane is ideal for those needing a 12V DC powered compact unit that does not take up an excessive amount of deck space.

- Hydraulically elevated boom folds vertically and elevates to 70 Degrees.
- Power boom extension from 5.5 to 8.5 Ft. with a Manual pull out to 11.5 Ft.
- Rotation is continuous and unlimited on a ball bearing slewing ring. A low speed high torque hydraulic motor driving a worm type gear set powers the rotation.
- Planetary Gear Drive Winch with permanent Magnet Electric Motor is standard.



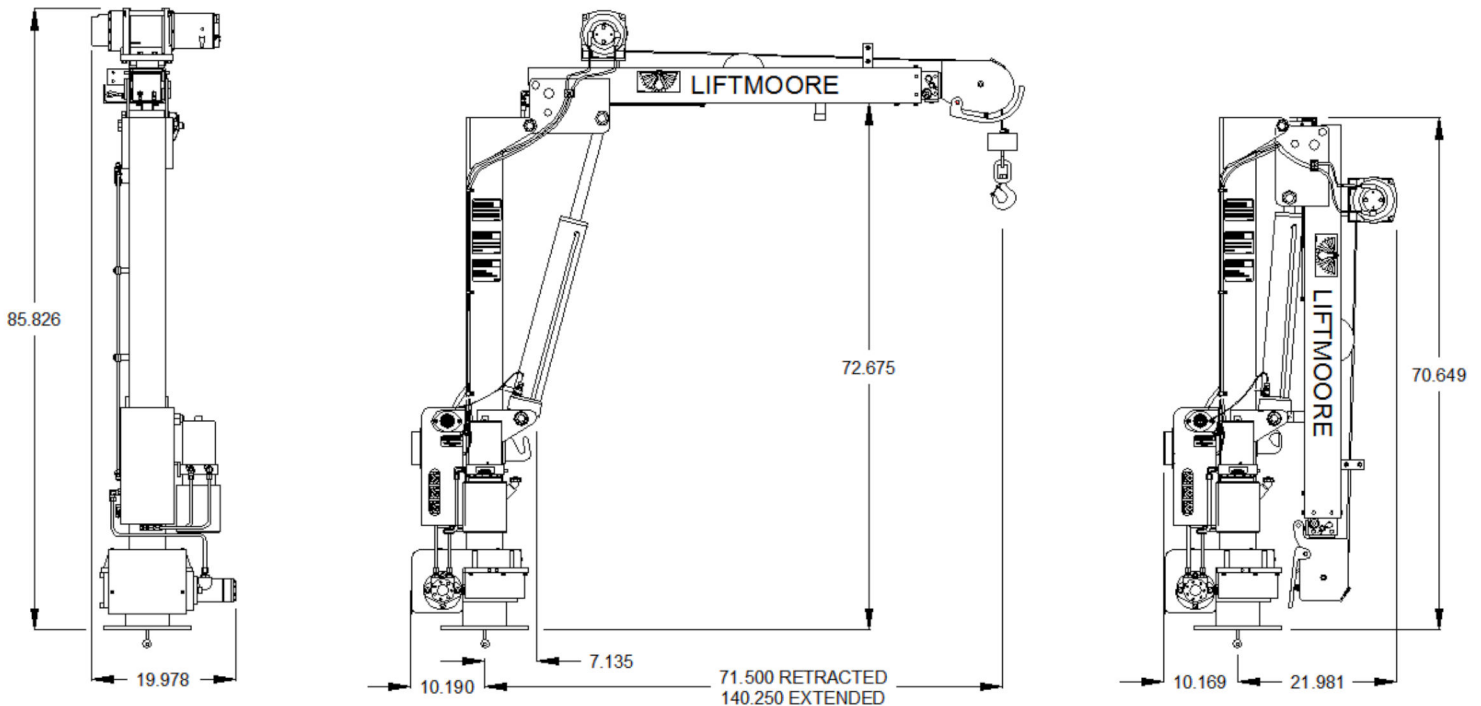
PICKLE WEIGHT W/ HOOK & SAFETY LATCH



HOUSTON, TEXAS
FAX: (800) 824-5559 (USA & CANADA)
FAX: (713) 688-6324
PHONE: (713) 688-5533
WWW.LIFTMOORE.COM

UNLIMITED
POWER ROTATION

LA6K-ATB SPECIFICATIONS



HOIST WINCH: The hoist winch uses a planetary gear drive for most efficient operation. The winch is powered by a permanent magnet electric motor. The single line capacity of the winch is 1200 Lbs. An integral mechanical brake is included with the winch.

Winch performance as follows.

Load (Lbs)	Hook Speed (Ft./Min.)	Amp Draw
0	25	22
600	21	63
900	19	84

WIRE ROPE and SHEAVES: The crane is supplied with 50 Ft. of 3/16 in. galvanized aircraft cable with a 4200 Lb. breaking strength. All sheaves meet ANSI requirements, a traveling block is supplied for two part wire line use.

ROTATION: Rotation is unlimited. The crane rotates on an external gear ball bearing slewing ring. A low speed high torque hydraulic motor drives the rotation through a 73:1 ratio self locking worm gear.

BOOM ELEVATION: The boom is capable of moving from a vertical down storage position to + 70 degrees above horizontal. It is elevated by a 3.50 In. bore double acting cylinder. The cylinder has an integral counterbalance valve. The Counterbalance valve has two vital purposes. This valve will hold the cylinder in the event of hose failure and it controls the rate of boom decent.

BOOM EXTENSION: The boom extends hydraulically from 5.5 Ft. to 8.5 Ft. with a 3 Ft. manual pull out to 11.5 ft. Powered by a 2.0 In. bore hydraulic cylinder which is mounted inside the boom for protection. The cylinder's integral counterbalance valve will hold the cylinder in the event of hose failure and controls the rate of cylinder retraction.

HYDRAULIC SYSTEM: A 12 Volt electric-hydraulic pump powers the elevation, extension and rotation functions. Four way open center control valves are used to control these functions. A gear type pump with 1.2 GPM capacity at 500 PSI is used. These valves are mounted on a manifold for easy access and have manual over-ride capabilities. The reservoir capacity is .75 gallon.

LOAD SENSOR: A load limiting sensor is installed on the elevation cylinder. When an overload is detected this sensor will shut down hoist up, boom out & boom down. The sensor will reset when load is reduced.

ANTI TWO-BLOCK: Prevents extending the boom against the travel block and breaking the cable.

PENDANT CONTROL: An 18 Ft. remote pendant control is supplied with each crane. The pendant is removable from the crane to prevent unauthorized use. Each function is controlled by a weather resistant momentary toggle switch.

Optional: Wireless controls are available.

BATTERY: It is advised that a group 31 deep cycle battery be installed under the crane to eliminate the line loss from the engine compartment. The crane is supplied with 25 Ft. of power cable with quick disconnects, an additional 3 Ft. Ground wire, 150 Amp circuit breaker for mounting near the battery and a master cutoff switch to be mounted near the crane.

MOUNTING: A minimum 10,000 Lb. GVWR recommended. Four 0.5 in. X 2.5 in. long Grade 8 Hex Head Cap Screws are supplied for mounting. The Bolt pattern is 9.5 in. square on a 12 In. square base plate.

ACCESSORIES: An outrigger or jackstand is necessary to keep the truck as level as possible as well as reducing the load on the crane's rotation mechanism and the trucks suspension components. Liftmoore can supply all of these options.



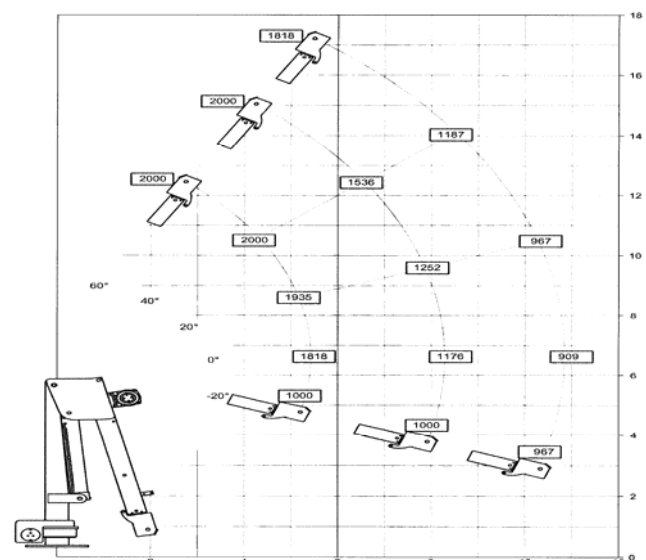
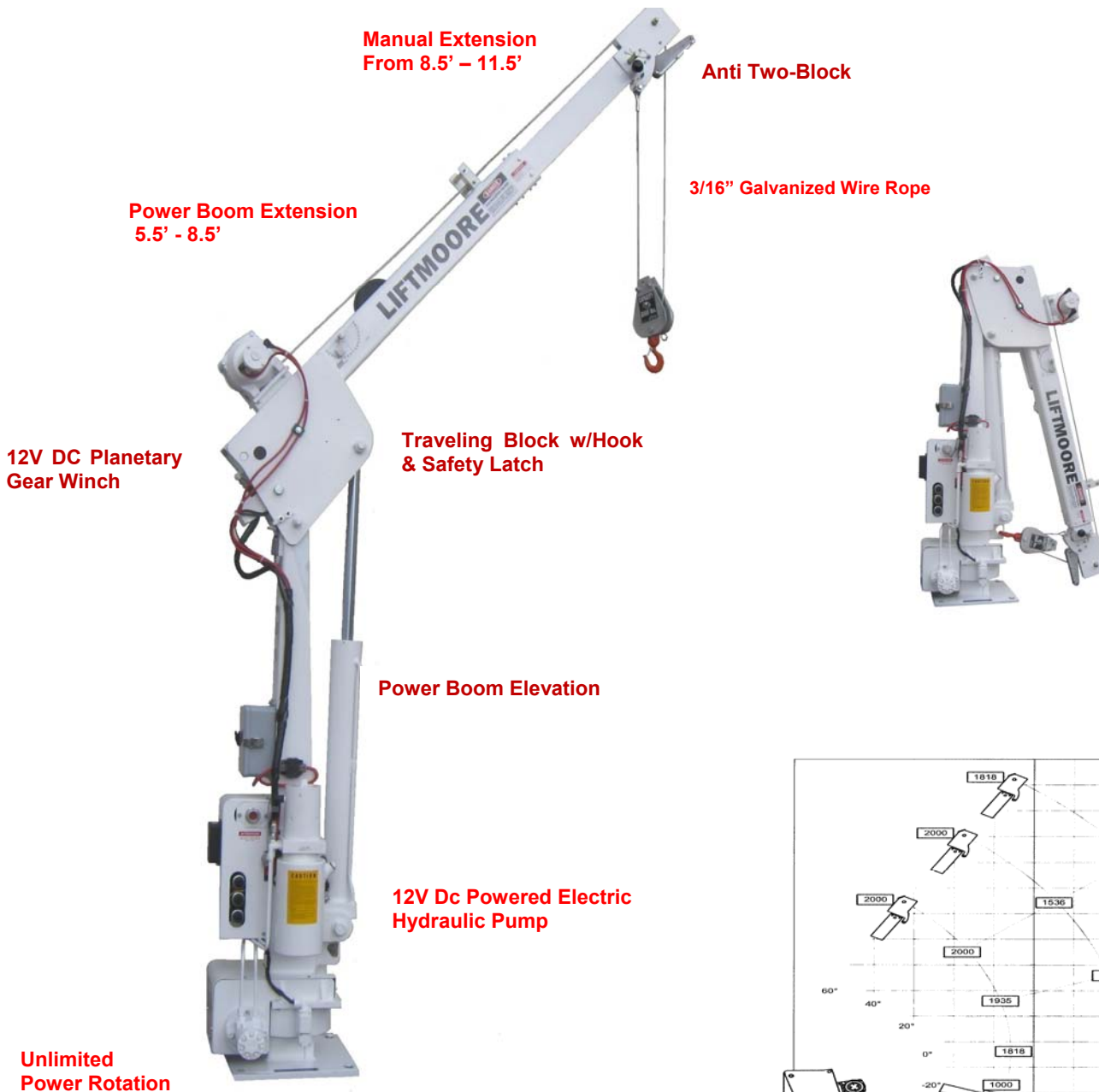
HOUSTON, TEXAS
 FAX: (800) 824-5559 (USA & CANADA)
 FAX: (713) 688-6324
 PHONE: (713) 688-5533
 WWW.LIFTMOORE.COM

LIFTMOORE LA10K CRANE

10,000 FT.-LB. MOMENT RATING
2,000 LB. MAXIMUM CAPACITY

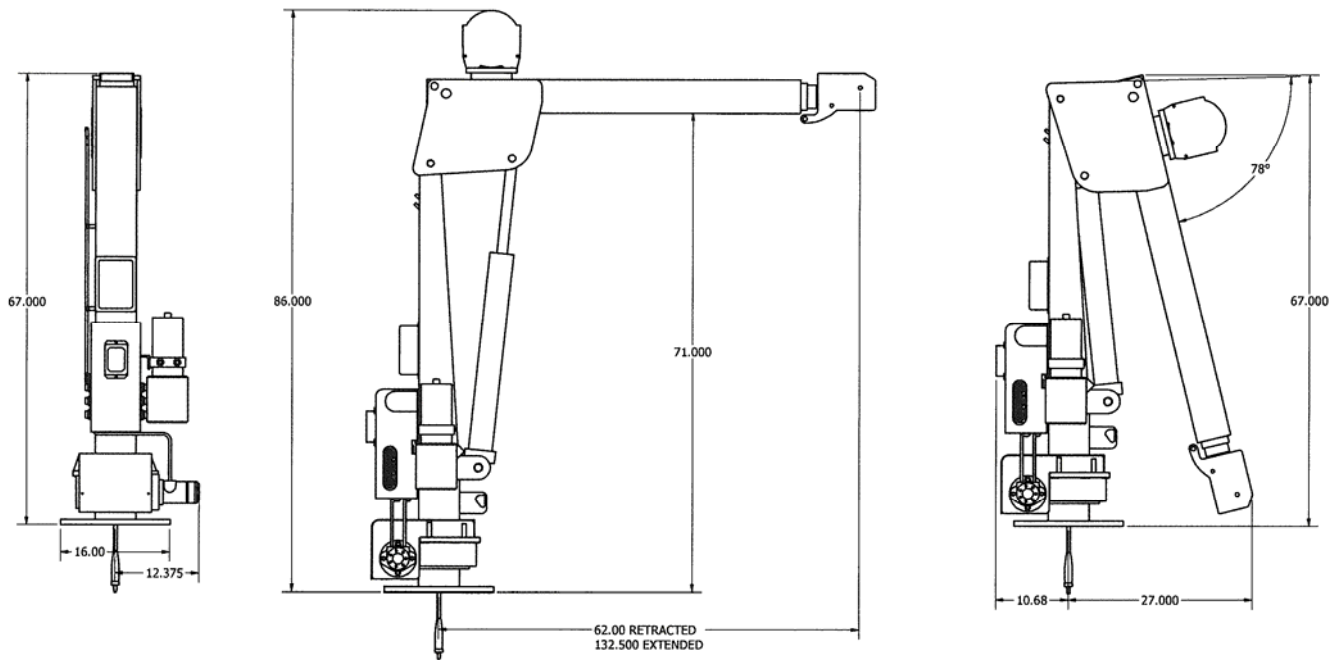
With its unique power folding boom this crane is ideal for those needing a 12V DC Powered compact unit that does not take up an excessive amount of deck space.

- Hydraulically elevated boom folds vertically and elevates to 70 Degrees.
- Power boom extension from 5.5 to 8.5 Ft. with a Manual pull out to 11.5 Ft.
- Unlimited rotation is delivered on a ball bearing slewing ring. A low speed high torque hydraulic motor driving a worm type gear set powers the rotation.
- Planetary Gear Drive Winch with permanent Magnet Electric Motor is standard.



HOUSTON, TEXAS
 FAX: (800) 824-5559 (USA & Canada)
 FAX: (713) 688-6324
 PHONE: (713) 688-5533
 www.liftmoore.com

LA10K SPECIFICATIONS



HOIST WINCH: The hoist winch uses a planetary gear drive for most efficient operation. The winch is powered by a permanent magnet electric motor. The single line capacity of the winch is 1200 Lbs. An integral mechanical brake is included with the winch.

Winch performance as follows.

Load (Lbs)	Hook Speed (Ft./Min.)	Amp Draw
0	25	22
600	21	63
900	19	84

WIRE ROPE and SHEAVES: The crane is supplied with 50 Ft. of 3/16 in. galvanized wire rope with a 4200 Lb. breaking strength. All sheaves meet ANSI requirements, a traveling block is supplied for two part wire line use.

ROTATION: Rotation is unlimited. The crane rotates on an external gear ball bearing slewing ring. A low speed high torque hydraulic motor drives the rotation through a 56:1 ratio self locking worm gear.

BOOM ELEVATION: The boom is capable of moving from a - 78 degrees down storage position to + 70 degrees above horizontal. It is elevated by a 3.50 In. bore double acting cylinder. The cylinder has an integral counterbalance valve. The Counterbalance valve has two vital purposes. This valve will hold the cylinder in the event of hose failure and it controls the rate of boom decent.

BOOM EXTENSION: The boom extends hydraulically from 5.5 Ft. to 8.5 Ft. with a 3 Ft. manual pull out to 11.5 ft. Powered by a 2.0 In. bore hydraulic cylinder which is mounted inside the boom for protection. The cylinder's integral counterbalance valve will hold the cylinder in the event of hose failure and controls the rate of cylinder retraction.

HYDRAULIC SYSTEM: A 12 Volt electric-hydraulic pump powers the elevation, extension and rotation functions. Four way open center control valves are used to control these functions. A gear type pump with 1.2 GPM capacity at 500 PSI is used. These valves are mounted on a manifold for easy access and have manual over-ride capabilities. The reservoir capacity is .75 gallon.

LOAD SENSOR: A load limiting sensor is installed on the elevation cylinder. When an overload is detected this sensor will shut down hoist up, boom out & boom down. The sensor will reset when load is reduced.

ANTI TWO-BLOCK: Prevents extending the boom against the travel block and breaking the cable.

PENDANT CONTROL: An 18 Ft. remote pendant control is supplied with each crane. The pendant is removable from the crane to prevent unauthorized use. Each function is controlled by a weather resistant momentary toggle switch.

Optional: Wireless controls are available.

BATTERY: It is advised that a group 31 deep cycle battery be installed under the crane to eliminate the line loss from the engine compartment. The crane is supplied with 25 Ft. of power cable with quick disconnects, an additional 3 Ft. Ground wire, 150 Amp circuit breaker for mounting near the battery and a master cutoff switch to be mounted near the crane.

MOUNTING: A minimum 10,000 Lb. GVWR recommended. Four 0.5 in. X 3.0" long Grade 8 Hex Head Cap Screws are supplied for mounting. The Bolt pattern is 12 in. square on a 15 In. square base plate.

ACCESSORIES: An outrigger or jackstand is necessary to keep the truck as level as possible as well as reducing the load on the crane's rotation mechanism and the trucks suspension components. Liftmoore can supply all of these options.



HOUSTON, TEXAS
 FAX: (800) 824-5559 (USA & Canada)
 FAX: (713) 688-6324
 PHONE: (713) 688-5533
 www.liftmoore.com

LIFTMOORE 3200 CRANE

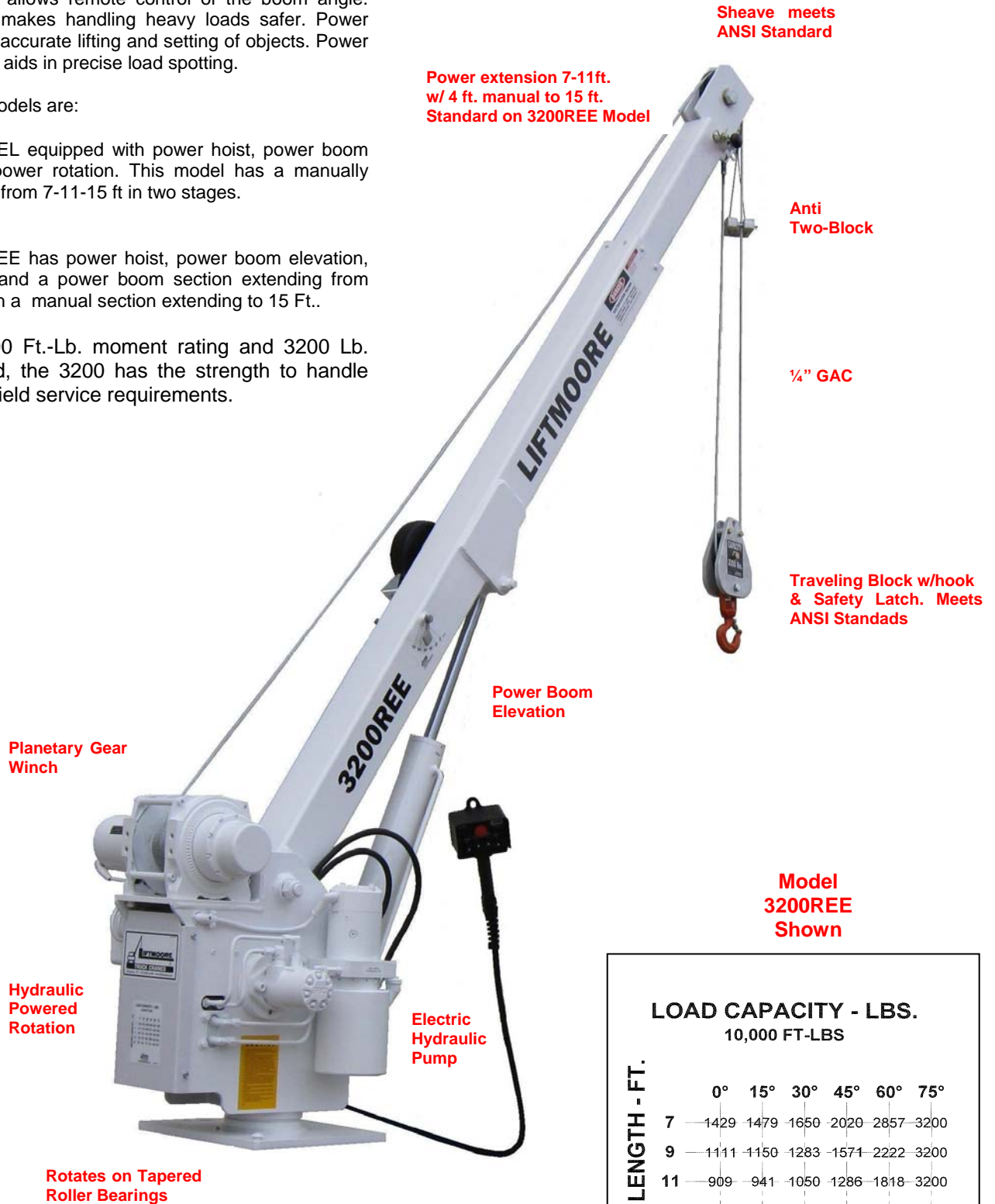
10,000 FT.-LB. MOMENT RATING
3,200 LB. MAXIMUM CAPACITY
 with power options

The Model 3200 Liftmoore Crane is a very versatile unit equipped with power features for easy operation. Power boom elevation allows remote control of the boom angle. Power rotation makes handling heavy loads safer. Power hoist makes for accurate lifting and setting of objects. Power boom extension aids in precise load spotting.

The standard models are:


- Model 3200REL equipped with power hoist, power boom elevation and power rotation. This model has a manually extended boom from 7-11-15 ft in two stages.
- Model 3200REE has power hoist, power boom elevation, power rotation and a power boom section extending from 7Ft. to 11Ft. with a manual section extending to 15 Ft..

With its 10,000 Ft.-Lb. moment rating and 3200 Lb. Maximum load, the 3200 has the strength to handle many of your field service requirements.



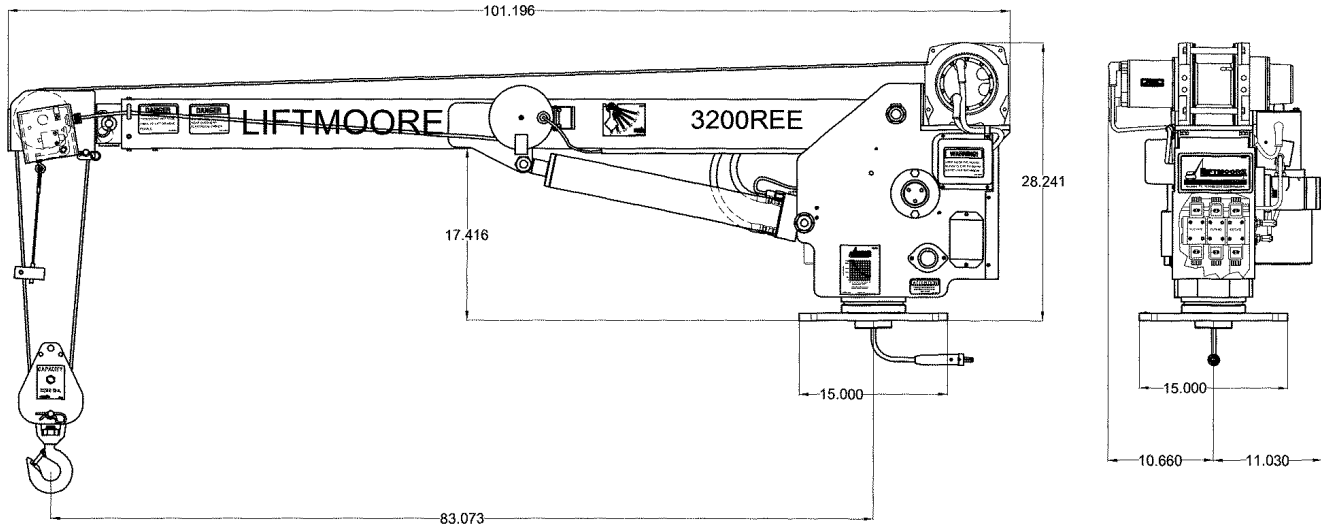
HOUSTON, TEXAS
 FAX: (800) 824-5559 (USA & Canada)
 FAX: (713) 688-6324
 PHONE: (713) 688-5533
 www.liftmoore.com

LOAD CAPACITY - LBS.		10,000 FT.-LBS					
BOOM LENGTH - FT.	ANGLE						
	0°	15°	30°	45°	60°	75°	
7	1429	1479	1650	2020	2857	3200	
9	1111	1150	1283	1571	2222	3200	
11	909	941	1050	1286	1818	3200	
13	769	796	888	1088	1538	2972	
15	667	690	770	943	1333	2576	


 713-688-5533
 WWW.LIFTMOORE.COM

22382

3200 SPECIFICATIONS



MOMENT RATING: 10,000 Ft.-Lbs.

HOIST WINCH: The hoist winch has a planetary gear drive for best possible efficiency. A 2.7 HP permanent magnet electric motor powers the winch. Single line capacity of the winch is 2000 Lbs. Load is controlled by a load apportioned mechanical brake located in the winch drum. Ratio between winch drum and wire rope meets ANSI B30.5 requirements.

First layer performance of the winch is as follows:

Load-Lbs	Hook Speed-Ft/ Min.	Electrical-Amps @ 12VDC
1000	13.1	64
2000	11.9	115

Note: Two part line required for loads above 2000Lbs.

WIRE ROPE and SHEAVES: The crane is supplied with 62 Ft. of ¼ in. galvanized aircraft cable. Minimum breaking strength of the rope is 7000 lbs. The wire rope is outside of the boom and visible for operators continual inspection. A traveling block for easy two-part hookup is included. All sheaves meet ANSI requirements.

BOOM: The boom is capable of moving from -5 to +75 Degrees. A double acting cylinder with an integral counterbalance valve elevates the boom. The counterbalance valve has two important functions. This valve holds the cylinder in the event of hose failure and it controls the rate of boom decent.

Two standard models available.

3200REL The boom manually extends from 7 Ft - 11 Ft -15 Ft in two sections. An intermediate position in both sections is provided.

3200REE The boom extends under power from 7 Ft. to 11 Ft. with an 4-Ft manual pull out to 15 Ft. with one intermediate position at 13 Ft.

HYDRAULIC SYSTEM: A hydraulic pump driven by a 12 volt D.C. series wound electric motor powers the crane's rotation, elevation and extension functions. The pump is a gear type with a 1.3 GPM capacity at 500 PSI. Control of the hydraulic functions is through four way spring centered solenoid activated valves. Valves have manual over-ride capability and are mounted on a manifold for easy access.

ROTATION SYSTEM: The hydraulic powered rotation is driven by a low speed, high torque hydraulic motor. The crane rotates 360 degrees continuously without limit on two 3.75" ID tapered roller bearings.

REMOTE PENDANT CONTROL: An 18-Ft. long remote pendant is provided for control of each powered function. The pendant control is removable from the crane to prevent unauthorized use of the crane. An E-Stop is included for emergency shutdown of all crane power as required by OSHA.

LOAD SENSOR: A load-limiting sensor is supplied as standard. This sensor will shut down hoist up, boom out & boom down when an overload is detected. The sensor will reset after the load is lowered.

ANTI TWO-BLOCK: Anti two-block is standard on this crane & prevents extending the boom against the travel block and breaking the cable.

POWER SOURCE: Crane is powered by the truck's 12 volt DC system. A second battery is recommended to keep the voltage as high as possible and should be installed in parallel with the vehicle's battery. A Group 31 "DEEP CYCLE" battery is recommended. 25 Ft of #1 battery cable with quick disconnect is included along with a 3-ft ground wire, 150 amp circuit breaker and master cut off switch.

MOUNTING: A minimum 10,500 Lb. GVWR recommended. Four 0.50" X 3.0" long Grade 8 hex head cap screws and lock nuts are provided. Mounting plate is 15" square with a 12" square bolt pattern.

OUTRIGGERS: An optional outrigger is needed for stability requirements of OSHA 1910.180. The outrigger is necessary to reduce the load on the crane's rotation mechanism and the truck's suspension.

BOOM REST: A boom rest is required on all power rotation model cranes.

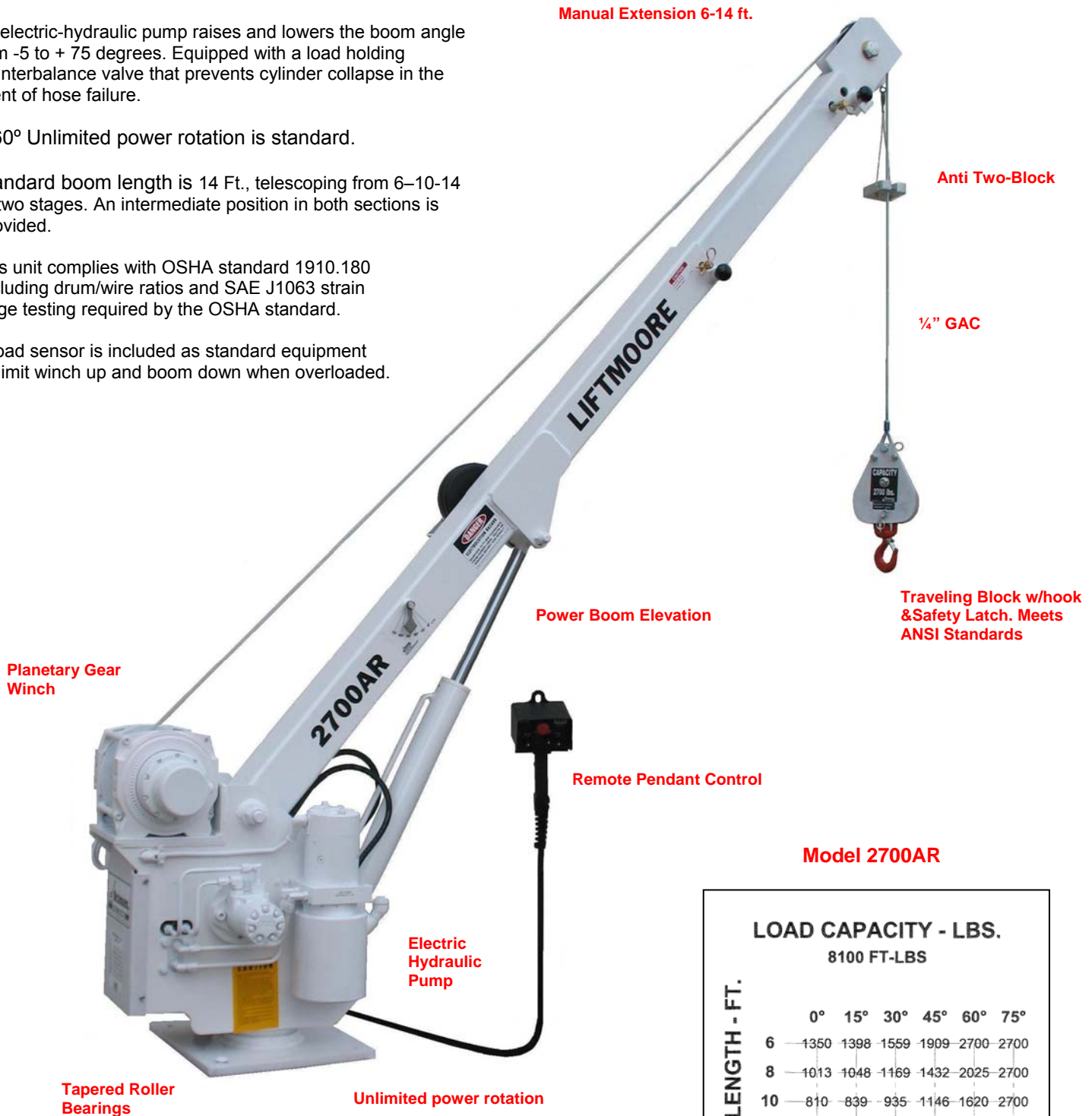


HOUSTON, TEXAS
 FAX: (800) 824-5559 (USA & Canada)
 FAX: (713) 688-6324
 PHONE: (713) 688-5533
 www.liftmoore.com

LIFTMOORE 2700AR CRANE

8,100 FT.-LB. MOMENT RATING
2,700 LB. MAXIMUM CAPACITY.

- The 2700AR is designed for your light duty lifting requirements where power boom elevation and power rotation is desired.
- A power elevation cylinder provides full control of the load radius while loaded.
- An electric-hydraulic pump raises and lowers the boom angle from -5 to + 75 degrees. Equipped with a load holding counterbalance valve that prevents cylinder collapse in the event of hose failure.
- 360° Unlimited power rotation is standard.
- Standard boom length is 14 Ft., telescoping from 6–10–14 in two stages. An intermediate position in both sections is provided.
- This unit complies with OSHA standard 1910.180 including drum/wire ratios and SAE J1063 strain gage testing required by the OSHA standard.
- A load sensor is included as standard equipment to limit winch up and boom down when overloaded.



Model 2700AR

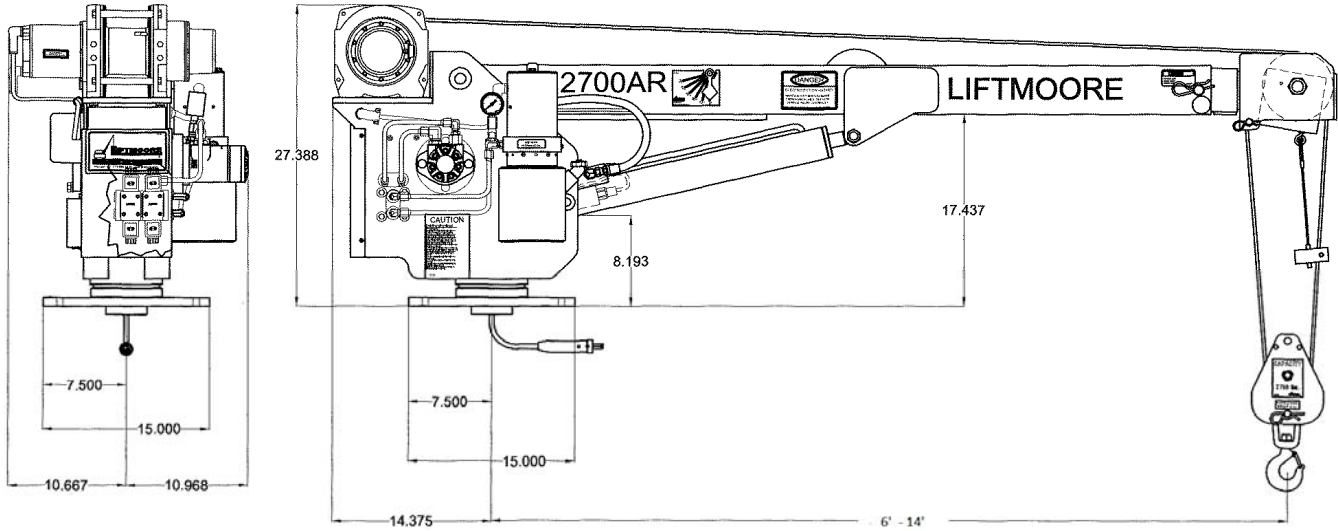
LOAD CAPACITY - LBS.		8100 FT-LBS					
		0°	15°	30°	45°	60°	75°
BOOM LENGTH - FT.	6	1350	1398	1559	1909	2700	2700
	8	1013	1048	1169	1432	2025	2700
	10	810	839	935	1146	1620	2700
	12	675	699	779	955	1350	2608
	14	579	599	668	818	1157	2235



HOUSTON, TEXAS
FAX: (800) 824-5559 (USA & Canada)
FAX: (713) 688-6324
PHONE: (713) 688-5533
www.liftmoore.com


713-688-5533
WWW.LIFTMOORE.COM

2700AR SPECIFICATIONS



MOMENT RATING: 8,100 Ft.-Lbs.

LIFT CAPACITIES:

- 2700 Lbs. @ 3 Ft. *
- 1350 Lbs. @ 6 Ft.
- 810 Lbs. @ 10 Ft.
- 578 Lbs. @ 14 Ft.

* Two part line required for loads above 2000 Lbs.

BOOM: Standard boom length is 6 ft. manually telescoping to 14 Ft. in two stages with an intermediate position in each section

Boom is raised by a double acting cylinder with counterbalance valve for safety.

HOIST WINCH: The hoist winch has a planetary gear drive for best possible efficiency. A 2.7 HP permanent magnet electric motor powers the winch. Load is controlled by a load apportioned mechanical brake located in the winch drum. Ratio between winch drum and wire rope meets ANSI B30.5 requirements.

First layer performance of the winch is as follows:

Load-Lbs	Hook Speed-Ft/Min.	Electrical-Amps @ 12VDC
1000	13.1	64
2000*	11.9	115

WIRE ROPE and SHEAVES: The crane is supplied with 62 Ft. of ¼ in. galvanized aircraft cable. Minimum breaking strength of the rope is 7000 lbs. The wire rope is outside of the boom and visible for operators continual inspection. A traveling block for easy two-part hookup is included. All sheaves meet ANSI requirements.

HYDRAULIC SYSTEM: A 12 volt D.C. electric-hydraulic pump supplies 1.3 GPM @ 500 PSI. Control of cylinder and rotation motor is by 4-way solenoid valves.

ROTATION SYSTEM: Rotation is continuous and unlimited. The Crane rotates on tapered roller bearings for smooth, long lasting operation. Power rotation is driven by a low speed, high torque hydraulic motor and drives through a 36:1 ratio self locking worm gear. The worm gear is an Aluminum Bronze Alloy. The worm is hardened steel. The crane rotates without limit on two 3.75" ID Tapered roller bearings.

REMOTE PENDANT CONTROL: An 18-Ft. long remote pendant is provided for control of each powered function. The pendant control is removable from the crane to prevent unauthorized use of the crane. An E-Stop is included for emergency shutdown of all crane power as required by OSHA.

LOAD SENSOR: A load-limiting sensor is supplied as standard. This sensor will shut down hoist up & boom down when an overload is detected. The sensor will reset after the load is lowered. Boom up is limited by the pressure relief setting in the pump.

ANTI TWO-BLOCK: Anti two-block is standard on this crane and prevents the travel block from striking the bottom of boom with possible wire rope damage.

POWER SOURCE: Crane is powered by the truck's 12 volt DC system. A second battery, installed near the crane, is recommended to keep the voltage as high as possible and should be installed in parallel with the vehicle's battery. A Group 31 DEEP CYCLE battery is recommended. 25 Ft of #1 battery cable with quick disconnect is included along with a 3-ft ground wire, 150 amp circuit breaker and master cut off switch.

MOUNTING: A minimum 9,000 Lb. GVWR recommended. An 8,600-Lb or larger GVWR chassis is recommended. Four 0.5" X 3.0" long Grade 8 hex head cap screws and lock nuts are provided. Mounting plate is 15" square with a 12" square bolt pattern.

OUTRIGGERS or JACKSTAND An optional Jackstand or Outrigger is needed for truck stability and to reduce the load on both the crane's rotation mechanism and the truck's suspension.



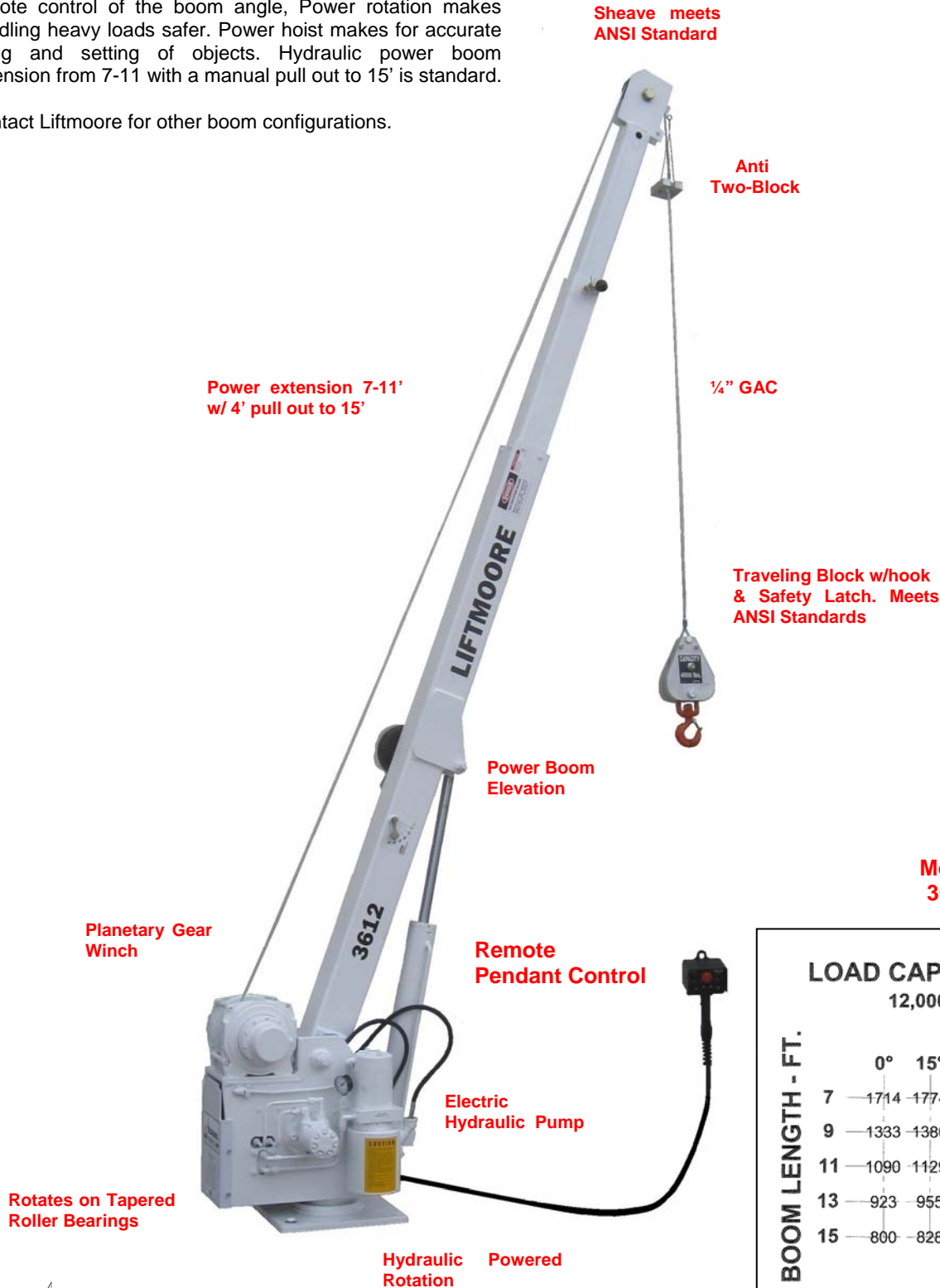
HOUSTON, TEXAS
 FAX: (800) 824-5559 (USA & Canada)
 FAX: (713) 688-6324
 PHONE: (713) 688-5533
 www.liftmoore.com

LIFTMOORE 3612REE 7-15 CRANE

12,000 FT.-LB. MOMENT RATING
3,600 LB. MAXIMUM CAPACITY

The Model 3612REE 7-15 is the latest model added to our product line. This unit comes standard with power features for maximum operation ease. Power boom elevation allows remote control of the boom angle, Power rotation makes handling heavy loads safer. Power hoist makes for accurate lifting and setting of objects. Hydraulic power boom extension from 7-11 with a manual pull out to 15' is standard.

Contact Liftmoore for other boom configurations.



**Model
3612**

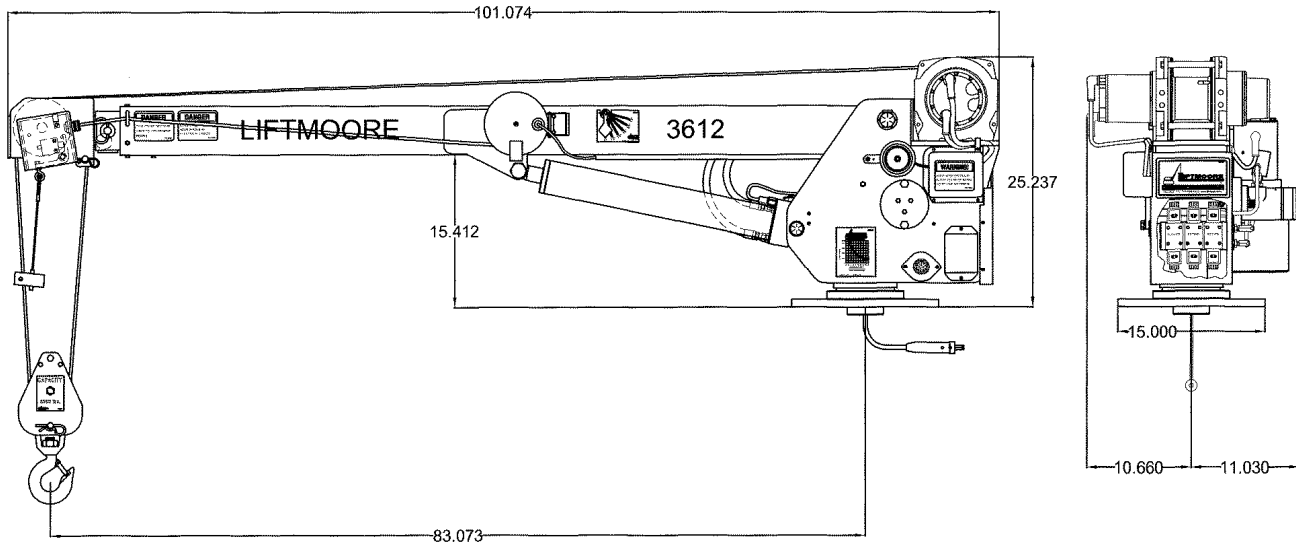
		LOAD CAPACITY - LBS. 12,000 FT.-LBS					
		0°	15°	30°	45°	60°	75°
BOOM LENGTH - FT.	7	1714	1774	1979	2424	3428	3600
	9	1333	1380	1539	1885	2666	3600
	11	1090	1129	1259	1542	2181	3600
	13	923	955	1065	1305	1846	3566
	15	800	828	923	1131	1600	3090



HOUSTON, TEXAS
 FAX: (800) 824-5559 (USA & Canada)
 FAX: (713) 688-6324
 PHONE: (713) 688-5533
 www.liftmoore.com


 713-688-5533
 WWW.LIFTMOORE.COM

3612REE 7-15 SPECIFICATIONS



MOMENT RATING: 12,000 Ft.-Lbs.

HOIST WINCH: The hoist winch has a planetary gear drive for best possible efficiency. A 2.7 HP permanent magnet electric motor powers the winch. Single line capacity of the winch is 2000 Lbs. Load is controlled by a load apportioned mechanical brake located in the winch drum. Ratio between winch drum and wire rope meets ANSI B30.5 requirements.

First layer performance of the winch is as follows:

Load-Lbs	Hook Speed-Ft/ Min.	Electrical-Amps @ 12VDC
1000	13.1	64
2000	11.9	115

Note: Two part line required for loads above 2000Lbs.

WIRE ROPE and SHEAVES: The crane is supplied with 62 Ft. of ¼ in. galvanized aircraft cable. Minimum breaking strength of the rope is 7000 lbs. The wire rope is outside of the boom and visible for operators continual inspection. A traveling block for easy two-part hookup is included. All sheaves meet ANSI requirements.

BOOM: The boom is capable of moving from -5 to +75 Degrees. A double acting cylinder with an integral counterbalance elevates the boom. The counterbalance valve has two important functions. This valve holds the cylinder in the event of hose failure and it controls the rate of boom decent.

The boom extends under power from 7 Ft. to 11 Ft. with a 4 Ft manual pull out to 15 Ft. with one intermediate position at 13 Ft.

Contact Liftmoore for other boom configurations.

HYDRAULIC SYSTEM: A hydraulic pump driven by a 12 volt D.C. series wound electric motor powers the crane's rotation, elevation and extension functions. Pump is a gear type with a 1.3 GPM capacity at 500 PSI. Control of the hydraulic functions is through four way spring centered solenoid activated valves. Valves have manual over-ride capability and are mounted on a manifold for easy access.

ROTATION SYSTEM: The hydraulic powered rotation is driven by a low speed, high torque hydraulic motor. The crane rotates 360 degrees continuously without limit on two 3.75" ID Tapered roller bearings.

REMOTE PENDANT CONTROL: An 18-Ft. long remote pendant is provided for control of each powered function. The Pendant control is removable from the crane to prevent unauthorized use of the crane. An E-Stop is included for emergency shutdown of all crane power as required by OSHA. **Optional** Wireless control is available.

LOAD SENSOR: A load-limiting sensor is supplied as standard. This sensor will shut down hoist up, boom out & boom down when an overload is detected. The sensor will reset after the load is lowered.

ANTI TWO-BLOCK: A standard on this crane, prevents extending the boom against the travel block and breaking the cable.

POWER SOURCE: Crane is powered by the truck's 12 volt DC system. A second battery is required to keep the voltage as high as possible and should be installed in parallel with the vehicle's battery. A Group 31 "DEEP CYCLE" battery is recommended. 25 Ft of #1 battery cable with quick disconnect is included along with a 3-ft ground wire, 150amp circuit breaker and master cut off switch.

MOUNTING: A minimum 10,500 Lb. GVWR recommended. Four 0.50" X 2.5" long Grade 8 hex head cap screws and lock nuts are provided. Mounting plate is 15" square with a 12" square bolt pattern.

OUTRIGGERS: An optional outrigger is needed for stability requirements of OSHA 1910.180. The Outrigger is necessary to reduce the load on the crane's rotation mechanism and the truck's suspension.

BOOM REST: A boom rest is required on all Power rotation Model Cranes.



HOUSTON, TEXAS
 FAX: (800) 824-5559 (USA & Canada)
 FAX: (713) 688-6324
 PHONE: (713) 688-5533
 www.liftmoore.com

LIFTMOORE 3612X 9-15

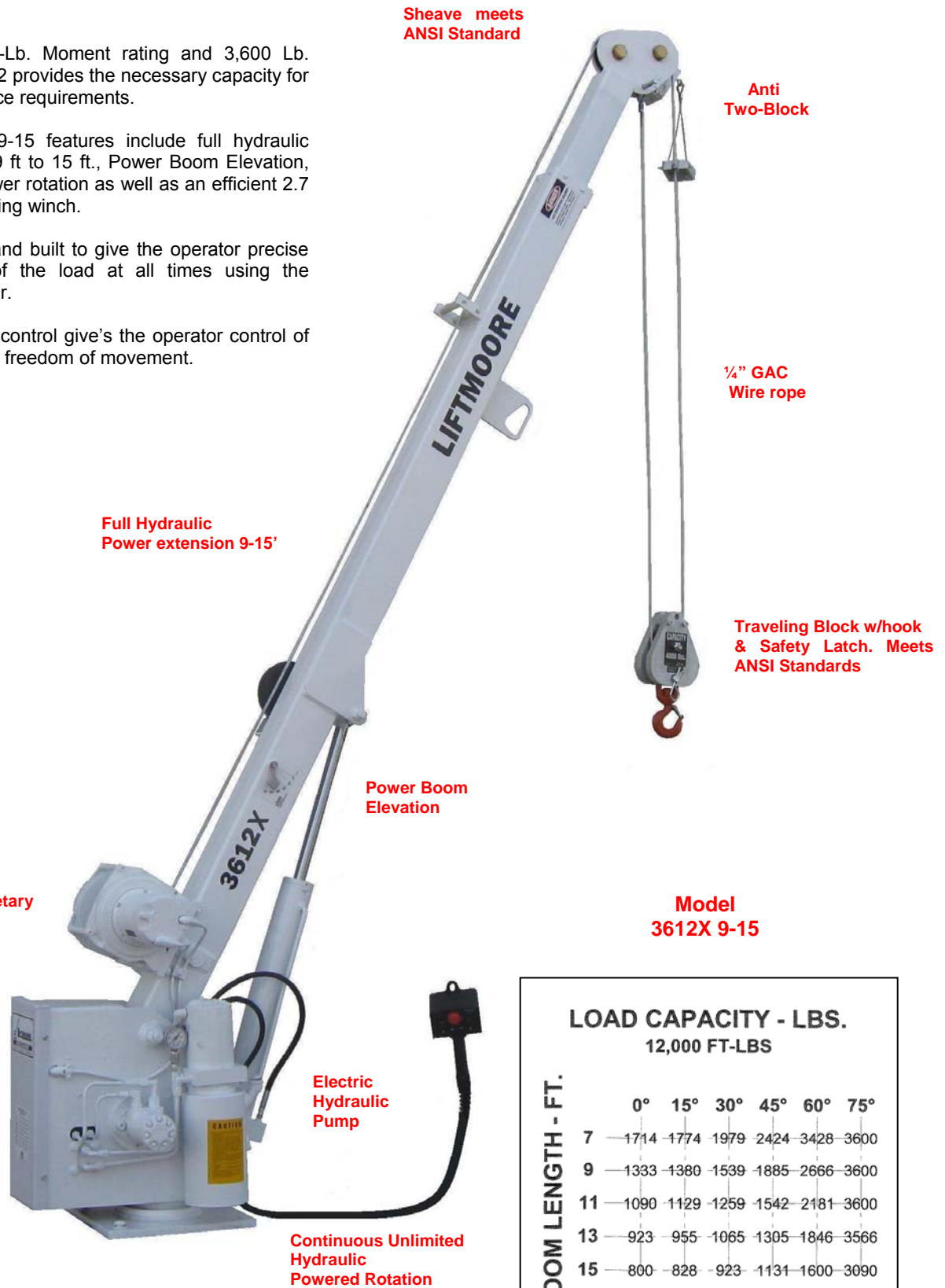
12,000 FT.-LB. MOMENT RATING
3,600 LB. MAXIMUM CAPACITY

- With it's 12,000 Ft.-Lb. Moment rating and 3,600 Lb. Maximum load, the 3612 provides the necessary capacity for many of your field service requirements.

- The Model 3612X 9-15 features include full hydraulic power extension from 9 ft to 15 ft., Power Boom Elevation, continuous unlimited power rotation as well as an efficient 2.7 HP planetary gear hoisting winch.

This unit is designed and built to give the operator precise and efficient control of the load at all times using the standard wired controller.

- An Optional wireless control give's the operator control of the crane with complete freedom of movement.



Sheave meets ANSI Standard

Anti Two-Block

1/4" GAC Wire rope

Traveling Block w/hook & Safety Latch. Meets ANSI Standards

Full Hydraulic Power extension 9-15'

Power Boom Elevation

2.7 HP Planetary Gear Winch

Model 3612X 9-15

Rotates on Tapered Roller Bearings

Electric Hydraulic Pump

Continuous Unlimited Hydraulic Powered Rotation

LOAD CAPACITY - LBS. 12,000 FT.-LBS

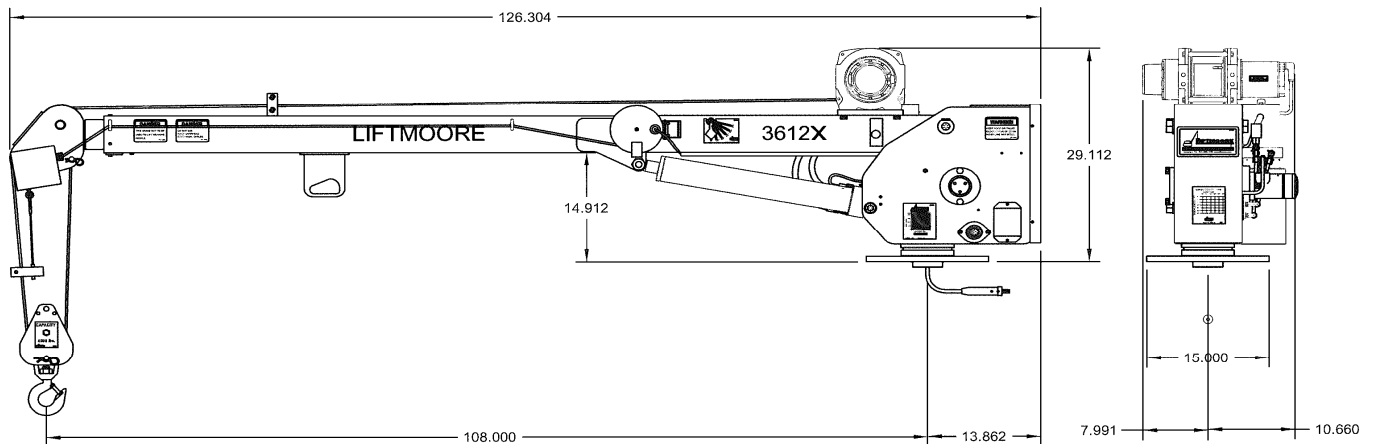
BOOM LENGTH - FT.	LOAD CAPACITY - LBS.					
	0°	15°	30°	45°	60°	75°
7	1714	1774	1979	2424	3428	3600
9	1333	1380	1539	1885	2666	3600
11	1090	1129	1259	1542	2181	3600
13	923	955	1065	1305	1846	3566
15	800	828	923	1131	1600	3090



HOUSTON, TEXAS
FAX: (800) 824-5559 (USA & Canada)
FAX: (713) 688-6324
PHONE: (713) 688-5533
www.liftmoore.com



3612X 9-15 SPECIFICATIONS



MOMENT RATING: 12,000 Ft.-Lbs.

HOIST WINCH: The hoist winch has a planetary gear drive for best possible efficiency. A 2.7 HP permanent magnet electric motor powers the winch. Single line capacity of the winch is 2000 Lbs. Load is controlled by a load apportioned mechanical brake located in the winch drum. Ratio between winch drum and wire rope meets ANSI B30.5 requirements.

First layer performance of the winch is as follows:

Load-Lbs	Hook Speed-Ft/ Min.	Electrical-Amps @ 12VDC
1000	13.1	64
2000	11.9	115

Note: Two part line required for loads above 2000 Lbs.

WIRE ROPE and SHEAVES: The crane is supplied with 62 Ft. of ¼ in. galvanized aircraft cable. Minimum breaking strength of the rope is 7000 lbs. The wire rope is outside of the boom and visible for operator's continual inspection. A traveling block for easy two-part hookup is included. All sheaves meet ANSI requirements.

BOOM ELEVATION: The boom is capable of moving from -5 to +75 Degrees. A double acting cylinder with an integral counterbalance valve elevates the boom. The counterbalance valve has two important functions. This valve holds the cylinder in the event of hose failure and it controls the rate of boom decent.

BOOM EXTENSION: The boom extends under hydraulic power from 9 ft. to 15 ft. The double acting cylinder incorporates an integrally mounted counterbalance valve.

HYDRAULIC SYSTEM: A hydraulic pump driven by a 12 volt D.C. series wound electric motor powers the crane's rotation, elevation and extension functions. Pump is a gear type with a 1.3 GPM capacity at 500 PSI. Control of the hydraulic functions is through four way spring centered solenoid activated valves. Valves have manual override capability and are mounted on a manifold for easy access.

ROTATION SYSTEM: The hydraulic powered rotation is driven by a low speed, high torque hydraulic motor. The crane rotates 360 degrees continuously without limit on two 3.75" ID Tapered roller bearings.

REMOTE PENDANT CONTROL: An 18-Ft. long remote pendant is provided for control of each powered function. The Pendant control is removable from the crane to prevent unauthorized use of the crane. An E-Stop is included for emergency shutdown of all crane power as required by OSHA. **Optional** Wireless control is available.

LOAD SENSOR: A load-limiting sensor is supplied as standard. This sensor will shut down hoist up, boom out & boom down when an overload is detected. The sensor will reset after the load is lowered.

ANTI TWO-BLOCK: Prevents extending the boom against the travel block and breaking the cable.

POWER SOURCE: Crane is powered by the truck's 12 volt DC system. A second battery is required to keep the voltage as high as possible and should be installed in parallel with the vehicle's battery. A Group 31 "DEEP CYCLE" battery is recommended. 25 Ft of #1 battery cable with quick disconnect is included along with a 3-ft ground wire, 150amp circuit breaker and master cut off switch.

MOUNTING: A minimum 10,500 Lb. GVWR recommended. Four 0.50" X 2.5" long Grade 8 hex head cap screws and lock nuts are provided. Mounting plate is 15" square with a 12" square bolt pattern.

OUTRIGGERS: An optional outrigger is needed for stability requirements of OSHA 1910.180. The Outrigger is necessary to reduce the load on the crane's rotation mechanism and the truck's suspension.

BOOM REST: A boom rest is required on all Power rotation Model Cranes.



HOUSTON, TEXAS
 FAX: (800) 824-5559 (USA & Canada)
 FAX: (713) 688-6324
 PHONE: (713) 688-5533
 www.liftmoore.com

LIFTMOORE 4000 CRANE

16,000 FT.-LB. MOMENT RATING
4,000 LB. MAXIMUM CAPACITY

For those lifting jobs requiring more mid range capacity, Liftmoore's model 4000 crane is the answer. With its 16,000 Ft-Lb. moment rating and 4,000 Lb. maximum capacity at 4 Ft. the 4000 provides the extra strength needed. The 4000 is designed for 11,000 GVWR and larger trucks.

This 12-volt electric crane includes a remote pendant for one-man control of its operation. Power boom elevation, power extension, power rotation and power hoist winch are standard.

Available with two standard boom lengths

- 4000X-16 Power extension from 8 Ft to 12 Ft with a manual pull out to 16 Ft.
- 4000X-20 Power extension from 10 Ft to 16 Ft with a manual pull out to 20 Ft.



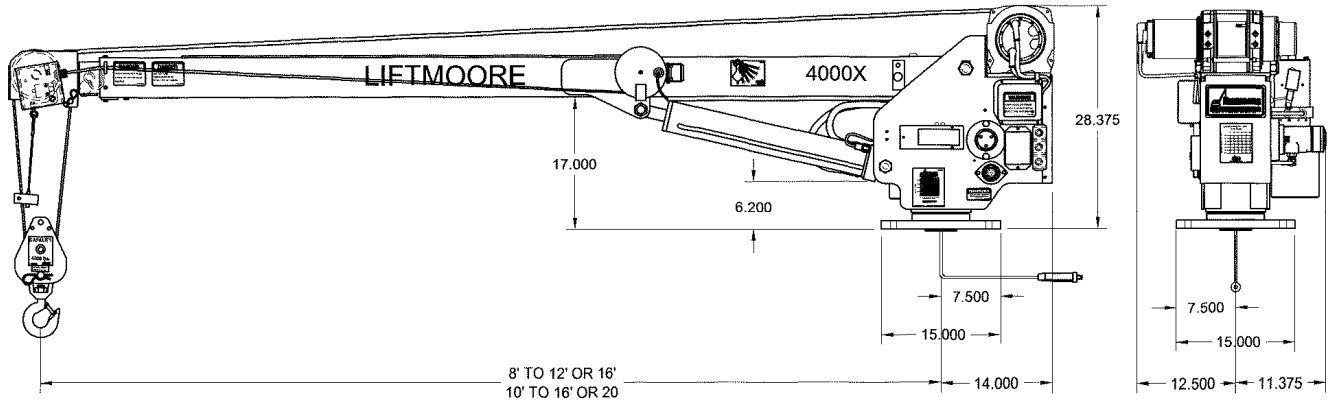
HOUSTON, TEXAS
FAX: (800) 824-5559 (USA & Canada)
FAX: (713) 688-6324
PHONE: (713) 688-5533
www.liftmoore.com

Model
4000X-16
Shown

LOAD CAPACITY - LBS.		16,000 FT-LBS					
BOOM LENGTH - FT.	ANGLE						
	0°	15°	30°	45°	60°	75°	
8	2000	2051	2319	2759	4000	4000	
10	1600	1656	1848	2263	3200	4000	
12	1333	1381	1540	1885	2667	4000	
14	1143	1183	1320	1616	2286	4000	
16	1000	1036	1154	1415	2000	3865	
18	889	920	1026	1257	1778	3434	
20	800	828	924	1131	1600	3091	


713-688-5533
WWW.LIFTMOORE.COM

4000 SPECIFICATIONS



MOMENT RATING:

16,000 Ft.-Lbs.

HOIST WINCH:

The hoist winch has a planetary gear drive for best possible efficiency. A 2.7HP permanent magnet electric motor powers the winch. Single line capacity of the winch is 2000 Lbs. The load is controlled by a load apportioned mechanical brake located in the winch drum. Ratio between winch drum and wire rope meets ANSI B30.5 requirements.

First layer performance of the winch is as follows:

Load-Lbs	Hook Speed-Ft/ Min.	Electrical-Amps @ 12VDC
1000	13.9	64
2000	11.9	115

Note: Two part line required for loads above 2000Lbs.

WIRE ROPE and SHEAVES:

The crane is supplied with 75 Ft. of ¼ in. galvanized aircraft cable. Minimum breaking strength of the rope is 7000 lbs. The wire rope is outside of the boom and visible for operators continual inspection. A traveling block for easy two-part hookup is included. All sheaves meet ANSI requirements.

BOOM:

The boom is capable of moving from -5 to +75 Degrees. A double acting cylinder with an integral counterbalance valve elevates the boom. The counterbalance valve has two important functions. This valve holds the cylinder in the event of hose failure and it controls the rate of boom decent.

There are two standard Booms available on the model 4000X crane.

4000X-16:

The boom extends under power from 8 Ft. to 12 Ft with a 4-Ft. manual pull out to 16 Ft. with one intermediate position at 14 Ft.

4000X-20:

The boom extends under power from 10 Ft. to 16 Ft. with a 4-Ft manual pull out to 20 Ft. with one intermediate position at 18 Ft.

HYDRAULIC SYSTEM:

A hydraulic pump driven by a 12 volt D.C. series wound electric motor powers the crane's rotation, elevation and extension functions. The pump is a gear type with a 1.3 GPM capacity at 500 PSI. Control of the hydraulic functions is through four way spring centered solenoid activated valves. Valves have manual over-ride capability and are mounted on a manifold for easy access.

ROTATION SYSTEM:

The hydraulic powered rotation is driven by a low speed, high torque hydraulic motor and drives through a 54:1 ratio self locking worm gear. The worm gear is an aluminum bronze alloy. The worm is hardened steel. The crane rotates 360 degrees continuously without limit on two 4" ID tapered roller bearings.

REMOTE PENDANT CONTROL:

A 25-Ft. long remote pendant is provided for control of each powered function. The pendant control is removable from the crane to prevent unauthorized use of the crane. An E-Stop is included that turns off all power to the crane as required by OSHA.

LOAD SENSOR

A load-limiting sensor is supplied as standard. This sensor will shut down hoist up, boom out & boom down when an overload is detected. The sensor will reset after the load is lowered.

ANTI TWO-BLOCK:

Anti two-block is standard on this crane and prevents extending the boom against the travel block and breaking the cable.

POWER SOURCE:

Crane is powered by the truck's 12 volt DC system. A second battery is required to keep the voltage as high as possible and should be installed in parallel with the vehicle's battery. A Group 31 "DEEP CYCLE" battery is recommended. 25 Ft of # 1 battery cable with quick disconnect is included along with a 3-ft ground wire, 150amp circuit breaker and master cut off switch.

MOUNTING: A minimum 14,500 Lb. GVWR recommended.

Four 0.75" X3.0" long Grade 8 hex head cap screws and lock nuts are provided. Mounting plate is 15" square with a 12" square bolt pattern.

OUTRIGGERS:

An optional outrigger is needed for stability requirements of OSHA 1910.180. The outrigger is necessary to reduce the load on the crane's rotation mechanism and the truck's suspension.



HOUSTON, TEXAS
 FAX: (800) 824-5559 (USA & Canada)
 FAX: (713) 688-6324
 PHONE: (713) 688-5533
 www.liftmoore.com

LIFTMOORE 5000W CRANE

25,000 FT.-LB. MOMENT RATING
5,000 LB. MAXIMUM CAPACITY

The Model 5000WX crane features a planetary gear winch, driven by a series wound reversible motor, which is the most efficient possible lifting mechanism for this type of equipment. No load line speed is 28 feet per minute.

With a moment rating of 25,000 ft-lbs., and a maximum capacity of 5,000 lbs., this crane offers plenty of capacity for many field service jobs.

This 12-volt electric crane includes a remote pendant for easy one-man control of its operation. Power boom elevation, power extension, power rotation and power hoist winch are standard.

Available with two standard boom lengths.

- 5000WX-20 Power extension from 10 Ft to 16Ft with a manual pull out to 20 ft.
- 5000WX 12-20 Power extension from 12 Ft to 20Ft



**Model
5000WX-20
Shown**

Rotates on Gear Bearing
Slewing Ring

Worm Gear Rotation

LOAD CAPACITY - LBS. 25,000 FT-LBS

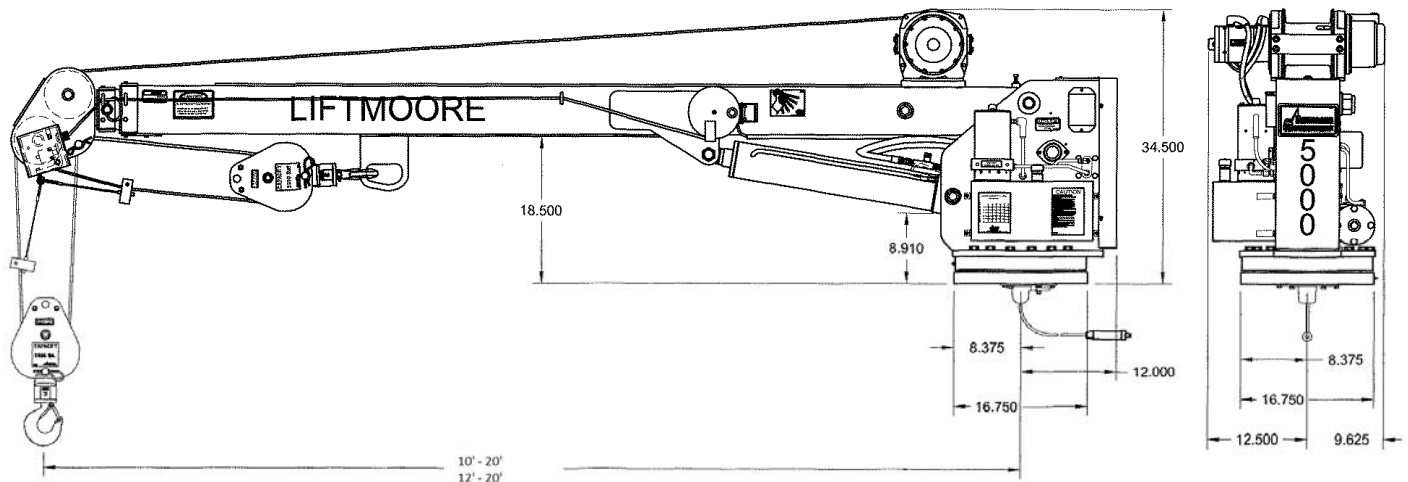
BOOM LENGTH - FT.	LOAD CAPACITY - LBS.					
	0°	15°	30°	45°	60°	75°
10	2500	2588	2887	3536	5000	5000
12	2083	2157	2406	2946	4167	5000
14	1786	1849	2062	2525	3571	5000
16	1563	1618	1804	2210	3125	5000
18	1389	1438	1604	1964	2778	5000
20	1250	1294	1443	1768	2500	4830



HOUSTON, TEXAS
FAX: (800) 824-5559 (USA & Canada)
FAX: (713) 688-6324
PHONE: (713) 688-5533
www.liftmoore.com


713-688-5533
WWW.LIFTMOORE.COM

5000WX SPECIFICATIONS



MOMENT RATING: 25,000 Ft.-Lbs.

LIFT CAPACITIES:

5000 lbs. @ 5 ft. *	1785 lbs. @ 14 ft.
3125 lbs. @ 8 ft. *	1562 lbs. @ 16 ft.
2500 lbs. @ 10 ft.	1388 lbs. @ 18 ft.
2083 lbs. @ 12 ft.	1250 lbs. @ 20 ft.

* Two Part line required for loads above 3000lbs.

HOIST WINCH: The hoist winch is a planetary gear driven for the most efficient operation in the industry. The winch is powered by a 2.5 HP 12-volt DC series wound electric motor. Single line no load speed of the winch is 30 feet per minute. The winch drum to wire line meets ANSI requirements.

WIRE ROPE and SHEAVES: The crane is supplied with 80 Ft. of 5/16 in. galvanized aircraft cable. Cable breaking strength is 9,600 lbs. and conforms to ANSI requirements. The wire rope is outside of the boom and visible for operators continual inspection. A traveling block for easy two-part hookup is included. The block includes a roller thrust bearing swivel hook for easier rotation of the load. All sheaves meet ANSI requirements.

BOOM: The boom angle varies from -5 to +75 Degrees and is powered by a 4 in. diameter double acting cylinder with an integral counterbalance valve. The counterbalance valve has three important functions, This valve holds the cylinder in the event of hose failure, controls the rate of boom decent, and functions as a relief valve. All power extended booms include nylatron slide pads to reduce friction.

5000WX-20: The boom extends under power from 10 Ft. to 16 Ft. with a 4-Ft. manual pull out to 20 Ft. with one intermediate position at 18 Ft.

5000WX 12-20: The boom extends under power from 12 Ft. to 20 ft.

POWER SOURCE: This crane operates on a 12 volt DC operating system. An additional battery is required and should be installed near the crane. This battery should be as large as possible. Use of a "Group 4D or larger" battery is recommended. A master cutoff switch, quick disconnect, circuit breaker and 25ft of battery wire for standard truck installation is provided.

ROTATION SYSTEM: The crane's rotation is powered through a worm gearbox for precise control and positive locking. The crane rotates on a gear bearing slewing ring. The electric swivel assembly allows continuous and unlimited rotation.

REMOTE PENDANT CONTROL: A 25-Ft. long remote pendant is provided for control of each powered function. All switches used in the pendant are momentary type. The pendant control is removable from the crane to prevent unauthorized use of the crane.

LOAD SENSOR: A load-limiting sensor is supplied as standard. This sensor will shut down hoist up, boom out and boom down when an overload is detected. The sensor will reset after the load is lowered.

ANTI TWO-BLOCK: Anti two-block is standard on this crane and prevents extending the boom against the travel block and breaking the cable.

MOUNTING: A minimum 14,500 Lb. GVWR recommended. Four 7/8" Grade 8 bolts are required. Bolts are not included. The crane mounts on a 16 3/4 in. square base plate with a 14 3/4 in. square bolt pattern.

OUTRIGGERS: An optional outrigger is needed for stability requirements of OSHA 1910.180. The outrigger is necessary to reduce the load on the crane's rotation mechanism and the truck's suspension.



HOUSTON, TEXAS
 FAX: (800) 824-5559 (USA & Canada)
 FAX: (713) 688-6324
 PHONE: (713) 688-5533
 www.liftmoore.com

LIFTMOORE 6036WX CRANE

36,000 FT.-LB. MOMENT RATING
6,000 LB. MAXIMUM CAPACITY

With a moment rating of 36,000 ft.-lbs. and a Maximum capacity of 6,000 lbs this crane offers plenty of capacity for field service jobs.

- 36,000 ft.-lbs. Moment Rating
- Designed for heavy lifting and precision spotting.
- Pistol grip pendant provides efficient one-person operation.
- Unlimited Rotation
- 12 V DC operating system

Power Boom Extension
From 10-16 Ft. and 4' Manual
extension to 20'

Anti Two-Block

Traveling Block
With Swivel Hook

12 V.D.C
3 Stage Planetary
Gear Winch

Rectangular
Boom Structure

Removable
Control
Pendant

Model
6036WX-20
Shown

Worm Gear
Rotation Drive



Unlimited Rotation
On Ball Slewing Ring

LOAD CAPACITY - LBS. 36,000 FT-LBS

BOOM LENGTH - FT.	LOAD CAPACITY - LBS.					
	0°	15°	30°	45°	60°	75°
10	3600	3730	4160	5090	6000	6000
12	3000	3105	3465	4245	6000	6000
14	2570	2660	2970	3635	5145	6000
16	2250	2330	2600	3180	4500	6000
18	2000	2070	2310	2830	4000	6000
20	1800	1865	2080	2545	3600	6000

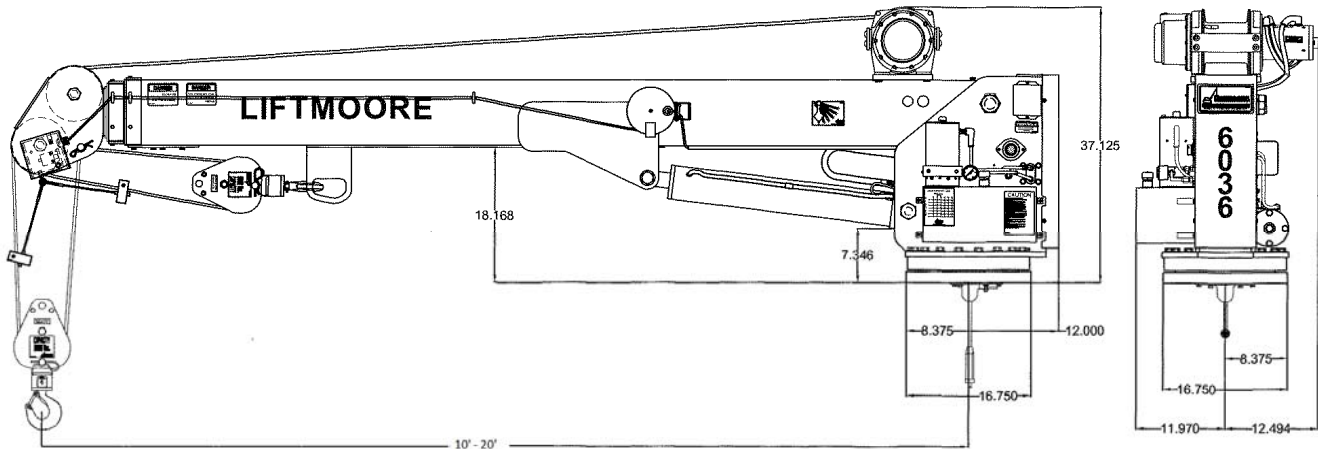


HOUSTON, TEXAS
FAX: (800) 824-5559 (USA & Canada)
FAX: (713) 688-6324
PHONE: (713) 688-5533
www.liftmoore.com


713-688-5533
WWW.LIFTMOORE.COM

22380

6036WX SPECIFICATIONS



MOMENT RATING: 36,000 Ft.-Lbs.

LIFT CAPACITIES:

6000 lbs. @ 6 ft. *	2520 lbs. @ 14 ft.
4500 lbs. @ 8 ft. *	2250 lbs. @ 16 ft.
3600 lbs. @ 10 ft. *	2000 lbs. @ 18 ft.
3000 lbs. @ 12 ft.	1800 lbs. @ 20 ft.

* Double line required for loads above 3000 lbs.

HOIST WINCH: The hoist winch is planetary gear driven for the most efficient operation in the industry. The winch is powered by a 2.5 HP 12-volt DC series wound electric motor. Single line no load speed of the winch is 30 feet per minute. Winch drum to wire line ratio meets ANSI requirements.

WIRE ROPE and SHEAVES: The crane is supplied with 90 Ft. of 5/16 in. 6 X 36 wire rope. Cable breaking strength is 10,540 lbs. and conforms to ANSI requirements. The wire rope is outside of the boom and visible for the operator's continual inspection. A traveling block for easy two-part hookup is included. The block includes a roller thrust bearing swivel hook for easier rotation of the load. All sheaves meet ANSI requirements.

BOOM ELEVATION: The boom angle varies from -5 to +75 Degrees and powered by a 4.5 in. diameter double acting cylinder with an integral counterbalance valve. The counterbalance valve has three important functions. This valve holds the cylinder in the event of hose failure and it controls the rate of boom descent, and functions as a relief valve.

BOOM EXTENSION: The boom is extended hydraulically from 10 Ft. to 16 Ft. with a 4 Ft. manual extension to 20Ft.. The hydraulic extension cylinder is mounted inside the boom for protection. A Counterbalance valve is mounted integral with the cylinder for safety. The power extendable portion slides on nylatron slide pads for minimum friction.

POWER SOURCE: This Crane operates on a 12 volt DC operating system. An additional battery is required and should be installed near the crane. This battery should be as large as possible. Use of a "Group 4D or larger" type battery is recommended. A master cutoff switch, quick disconnect, circuit breakers and 25 ft of battery wire for standard truck installation is provided.

ROTATION SYSTEM: The crane's rotation is powered through a worm gearbox for precise control and positive locking. The crane rotates on a gear bearing slewing ring. The electric swivel assembly allows unlimited rotation.

REMOTE PENDANT CONTROL: A 25-Ft. long remote pendant is provided for control of each powered function. All switches used in the pendant are momentary type. The Pendant control is removable from the crane to prevent unauthorized use of the crane. An E-Stop switch is provided to turn off power to the crane's functions in the event of an emergency.

LOAD SENSOR: A load-limiting sensor is supplied as standard. This sensor will shut down hoist up, boom out and boom down when an overload is detected. The sensor will reset after the load is lowered.

ANTI TWO-BLOCK: Anti two-block is standard on this crane and prevents extending the boom against the travel block and breaking the cable.

MOUNTING: A minimum 17,500 Lb. GVWR recommended. Four 7/8" Grade 8 bolts are required. Bolts are not included. The crane mounts on a 16 3/4 in. square base plate with a 14 3/4 in. square bolt pattern.

OUTRIGGERS: An optional outrigger is needed for stability requirements of OSHA 1910.180. The outrigger is necessary to reduce the load on the crane's rotation mechanism and the truck's suspension.



HOUSTON, TEXAS
 FAX: (800) 824-5559 (USA & Canada)
 FAX: (713) 688-6324
 PHONE: (713) 688-5533
 www.liftmoore.com