

ANTHONY
LIFTGATES, INC.®

ALB



* Shown with optional galvanized finish, aluminum platform, and step kit.

PICKUP SERIES

LIFTING CAPACITIES (LBS): 1500

KEY ADVANTAGES

1. Twin Cylinder Drive

Cylinders provide powerful lifting at low hydraulic pressures for extended hydraulic system life.

2. Stabilizer Beam

Minimizes lift sway and doubles as a step.

3. Lifetime-Warranty Service Free Bushings

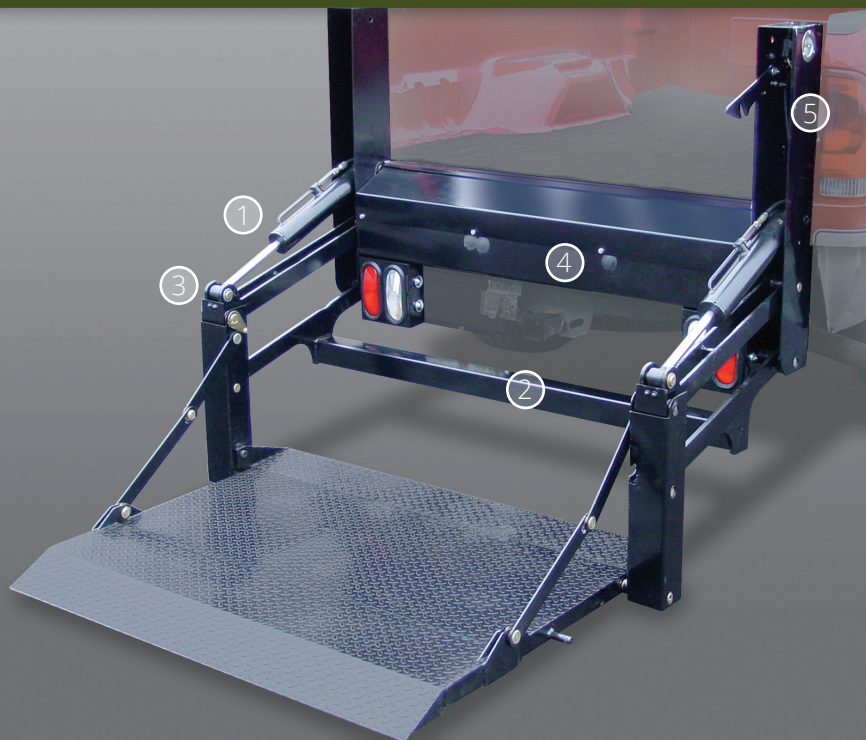
Used at all critical pivot points to reduce wear without the need for routine lubrication.

4. Spare Tire Access

Spare tire accessible through two holes in rear frame.

5. Marine Duty Potted Toggle Switch

Heavy duty toggle, potted to permanently separate and seal electrical connections from corrosion.



QUALITY, RELIABILITY, CUSTOMER SERVICE

MADE IN THE USA 

BUILT FOR WORK

A work truck should be tough. To be sure ALB is up to the task, we endurance tested it to 100,000 cycles at maximum capacity. The result: zero failure, and no visible signs of wear to critical pivot points. **THAT is Anthony quality.**

STANDARD FEATURES

- **Anthony 3-Step Powder Coat**
Steel components are washed, shot blast prepped, and coated with premium finish.
- **EZ Mount**
Ships factory assembled, filled, and tested.
- **Industry-Leading Warranty**
2 years mechanical + 2 years electrical & hydraulic, parts and labor.
- **Circuit Protection**
200 Amp fuse protects truck wiring from a "dead short".
- **Pressure Compensated Flow Valve**
Constant, controlled speeds at all times. Prevents "free-fall" under certain hydraulic failures.
- **Easy Access Power Unit**
Accessible through steel panel on top of rear bumper housing.
- **Universal Mount**
Fits most full size domestic or foreign pickups, and most utility bodies. Designed to allow clearance with most hitch assemblies.

QUALITY COMES STANDARD

AVAILABLE PLATFORMS

Platform Type	Load Area + Ramp
Steel Ramped	50" x 41" + 6"
Aluminum Ramped	50" x 41" + 6"
Steel Bar Grate with Tire Rack	50" x 22"

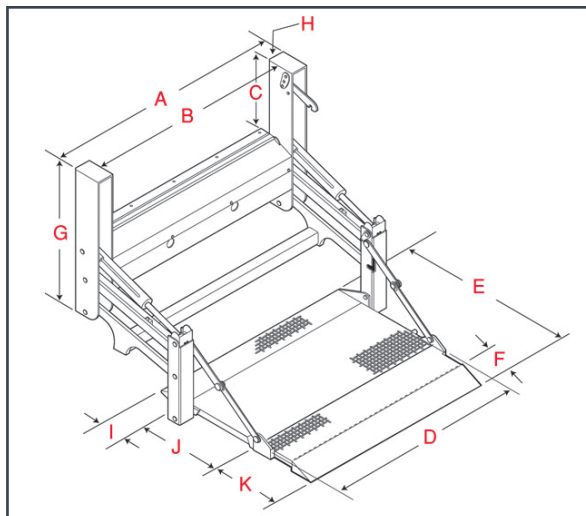
OPTIONS

- Galvanized finish with extended warranty
- Wireless, removable handheld corded, or dual control options.
- Access step kit
- Light kit
- Cab cutoff switch
- Utility body mounting kit

ALB DIMENSIONS

Bed Height Range Up to 46"

A	61.7"
B	52.5"
C	19.5"
D	50"
E	46"
F	5"
G	36.75"
H	4.6"
I	73"
J	21.8"
K	16.9"



Anthony Liftgates, Inc.

1037 W. Howard Street
P.O. Box 615
Pontiac, IL 61764-0615

Phone: 815.842.3383

Fax: 815.844.3612

Toll Free: 800.482.0003

www.anthonyliftgates.com