

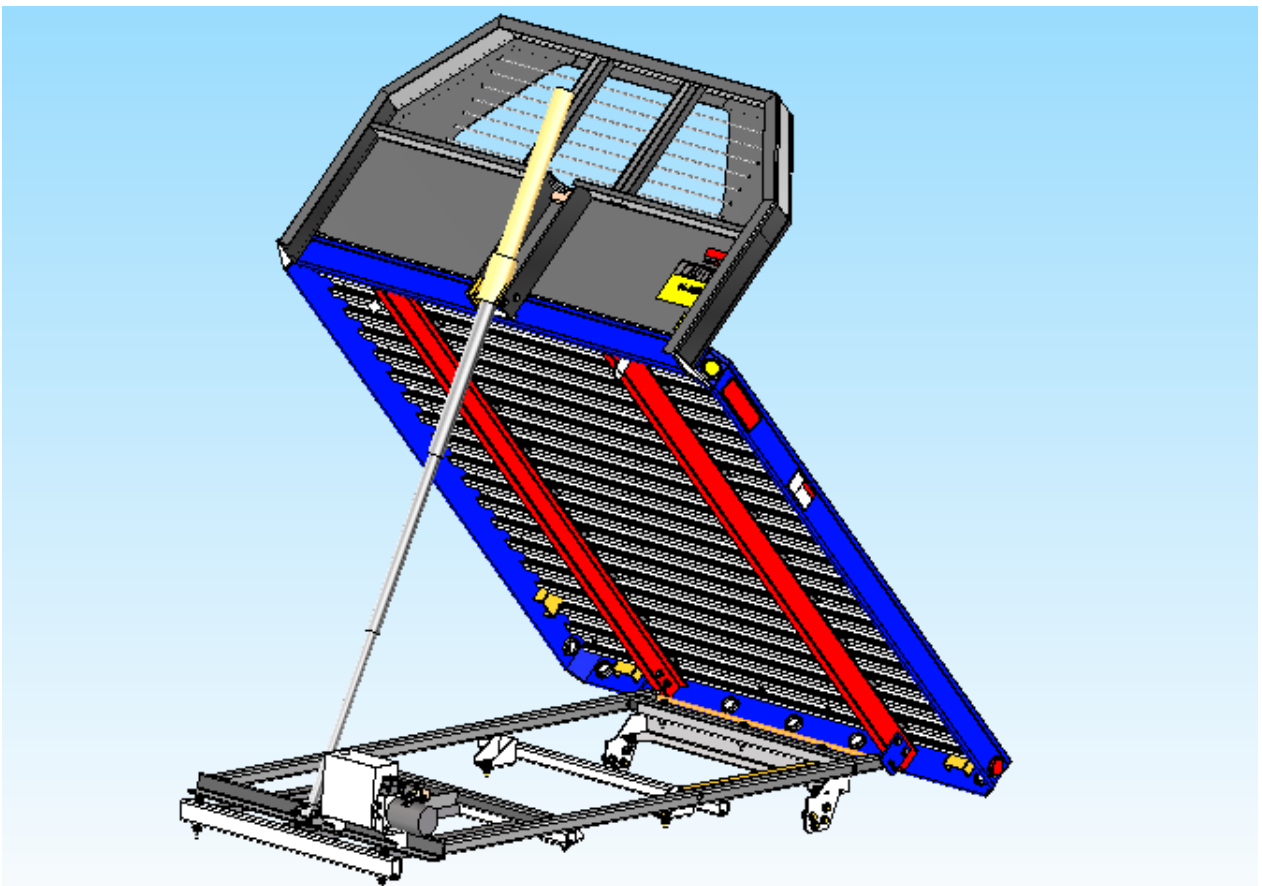


**Proudly built in the USA**

**Owner's Manual**

***TC-508***

***Dumping Flatbed***



**TruckCraft Corporation**

**Chambersburg, PA**

**1-800-755-3867**

Copyright 2011

[www.truckcraft.com](http://www.truckcraft.com)

**TRUCKCRAFT CORPORATION**

5751 Molly Pitcher Hwy. S.

Chambersburg, Pa. 17202

Tel. 800.375.3867

Phone 717.375.2900

Fax 717.375.2975

www.truckcraft.com



"WHERE WORKMANSHIP IS EVERYTHING"

**Table of Contents**

**Preface.....1**

**Ordering Repair Parts.....1**

**Safety Information.....2**

**Mounting and operating Instructions.....3**

**Maintenance.....6**

**D1-06088 Assembly on SRW Ford .....7**

**D2-06084 Mounting Kit Installation / Ford .....9**

**D1-06194 Assembly on SRW GM ..... 10**

**D2-06222 Mounting Kit Installation / GM ..... 12**

**Options:**

**D2-06106 Pintle Hitch/Bumper Installation / Ford ..... 13**

**D2-06231 Pintle Hitch/Bumper Installation / GM ..... 14**

**D1-06198 12” Fold Down Sides ..... 15**

**Warranty .....17**

## **Preface**

**Read and understand all sections of this manual prior to installing or operating the TruckCraft dump bed.** This manual contains information for the installation, operation, and maintenance of the TruckCraft dumping flatbed with fold down sides. Proper care and operation of the unit will assure years of dependable service. Your local TruckCraft Dealer will instruct you in its general operation. TruckCraft Corporation will be glad to answer any questions that may arise regarding the operation of your dump bed.

## **Ordering Repair Parts**

When service is necessary, your local TruckCraft dealer can provide assistance. Always obtain original TruckCraft replacement parts from your dealer. Substitute items could affect the performance and warranty of the unit. Dealers in your area can be found on the web at **www.truckcraft.com**.

When ordering parts the dump bed serial number and description or part number of parts needed are required. **The serial number is located on front plate (behind the cab) of the cabguard on the drivers side.**

**Dumper Serial Number:** \_\_\_\_\_

**Date of Purchase:** \_\_\_\_\_

**Purchased From:** \_\_\_\_\_

TruckCraft Telephone #800.375.3867 or 717.375.2900

TruckCraft Fax #717.375.2975

Method of shipping parts to be specified such as customer pickup, UPS, Common Carrier, Parcel Post or Air Freight. All orders to be confirmed in writing, or faxed, to insure proper understanding of request.

Having preventative maintenance parts on hand could save valuable time.

## **Improvements and Changes**

Because TruckCraft strives to continually improve our products, we reserve the right to make changes and improvements wherever practical, without obligation to make those same changes or improvements to the equipment already sold. Photographs used in this manual may not be up-to-date with current design changes.

## **Safety Information**

Observe the following safety procedures during the use of the dumper: Before operating read and understand all information furnished with your dumper and in this manual.

- ✓ Keep hands, feet and clothing away from moving parts.
- ✓ Never exceed the structural capacity (7,000 lbs.) of the dumper. Structural capacity means the maximum weight the dumper will carry and dump with an acceptable margin of safety. This does not mean that your truck can carry 7,000 lbs.
- ✓ Never exceed the manufacturer's GVWR (Gross Vehicle Weight Rating) of your truck. This rating can usually be found on the end of the driver's door just above or below the latch.
- ✓ Never exceed the truck axle and tire ratings.
- ✓ Always keep as much of the load as possible forward of the rear axle and evenly distributed from side to side.
- ✓ Never work under a raised body unless the body is supported by blocking or propped in the raised position. Always unload the body prior to using the prop.
- ✓ Operate the dumper only when the truck is on a firm, level surface.
- ✓ Always inspect the area around the truck for safe dumping prior to operating.
- ✓ Do not move the truck with the deck in a raised position.
- ✓ Never let the dumper sit with the bed raised when not in use.
- ✓ Always open the tailgate prior to raising the dumper when it is loaded.
- ✓ Store the remote control in a location that assures that no object can come in contact with the raise button unintentionally.
- ✓ Before raising the dumper, check for adequate overhead clearance. Be alert for overhead electrical wires.
- ✓ Regularly check and tighten all fasteners to the recommended torque values in the Torque Chart shown below.
- ✓ Maximum hydraulic pressure is factory set . Tampering with this setting will void the warranty and can damage hydraulic components and result in system failure.
- ✓ Do not attempt to repair this dumper yourself unless you have experience working on dump beds and are familiar with the hazards involved. For safety, take your dumper to the dealer from which it was purchased for all repairs and service.

<b>Torque Chart - Steel Fasteners</b>		
<b>Size</b>	<b>Grade 5 (Lb-Ft)</b>	<b>Grade 8 (Lb-Ft)</b>
1/4-20	6-7	10-11
1/4-28	8-9	11-12
5/16-18	14-15	21-22
3/8-16	24-26	37-40
1/2-13	60-65	90-100
5/8-11	122-130	180-190
3/4-10	220-230	315-330

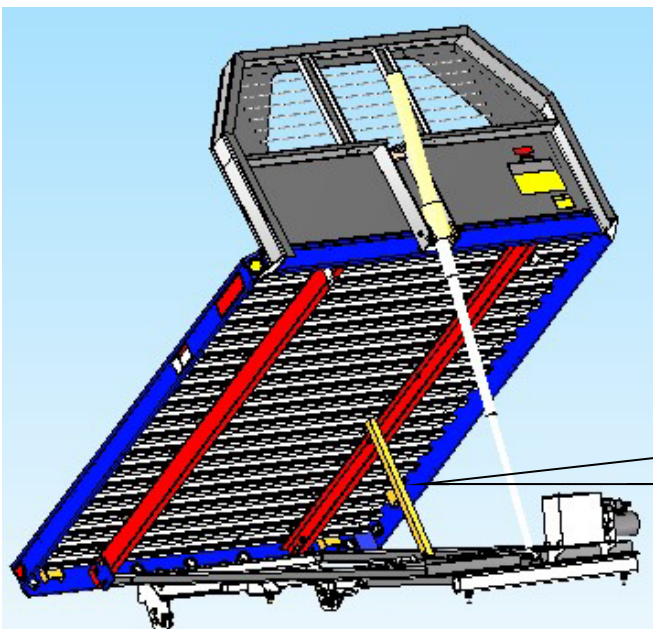
**FIGURE 1**

## **Mounting & Operation Instructions**

**CAUTION:** Verify any lifting and support devices used can support the Flatbed assembly before picking it up.

1. Install the mounting kit on the truck frame per drawing #D2-06084. Use the hardware supplied with the mounting kit and torque bolts as noted.
2. Attach a jumper cable to the flatbed subframe and to the frame of the truck for a temporary ground.
3. Cut and remove the shipping strap (if any) at the front of the flatbed and temporarily hook the loose end of the power cable to the positive terminal of the truck battery.
4. Position the flatbed dumper in the approximate mounting location. Center the bed from side to side.
5. While making sure everybody is standing clear, raise the flatbed high enough to engage the safety prop. Use the up and down buttons on the remote control to raise and lower the flatbed (See figure #3). Lower the flatbed while holding the prop in a vertical position so that it engages a slot in the bottom of one of the floor planks and is supporting the full weight of the flatbed.
6. Mount the flatbed and subframe to the truck frame Mount Kit per drawing #D1-06088 Section G-G and Section H-H. Use the mounting hardware supplied with the kit and per the bill of material on D1-06088. When tightening bolts, do not over-tighten the three bolts attaching the subframe at the rear of the deck, which can crush the aluminum tube.

Figure 3



**CAUTION:** Do not work under the flatbed dumper without having the safety prop properly positioned. (See figure #4).

Safety prop raised and shown engaged in slot in floor plank.

7. Route the pump power cables to the battery in such a way as to ***avoid sharp edges and maintain a minimum distance of 8” from any portion of the exhaust system.*** By routing the power cable along the side of the truck frame, you will give the cable maximum protection. Fasten the cable to the truck frame using the stay straps provided. These stay straps should be inserted through holes in the truck frame to secure the cable. Do not cross under or over the truck frame where the cable could get pinched or frayed due to rubbing.
8. The hydraulic pump reservoir has been filled at the factory. If more fluid is necessary use only Dextron Automatic Transmission Fluid. **CAUTION:** Do not overfill. Adding too much fluid will cause the reservoir to overflow when the bed is lowered. The best method of refilling the reservoir is to place the dumper on the safety prop, with the prop being as straight up and down as possible under the dumper. Insert a clean ruler or measuring stick into the reservoir making sure it touches the bottom of the reservoir, not the pickup tube. Add fluid until the depth of fluid in the reservoir is 4”. If you have no way to measure 4”, an alternate method of filling is to add 2-3 oz. of fluid at a time and raise the bed. Repeat this procedure until the pump does not change sound (from pumping air) at the end of its stroke. Leave the breather off and fully lower the bed to the down position. The bed can then be raised and the breather reinstalled. The reason for leaving the breather off during the first cycle after filling is to guard against pressurizing the reservoir in the event that it has been overfilled. Back pressure due to overfilling may dislodge the reservoir from the pump. Adding too much fluid will result in the reservoir overflowing when the bed is lowered. The hydraulic cylinder will require bleeding of all air each time you replenish fluid.

**CAUTION:** An accumulation of air in the lifting cylinder will cause the bed to bounce and possibly raise when the vehicle is moving.

**BLEEDING THE CYLINDER:** After filling the hydraulic reservoir to the proper level, locate and remove the plug on the top of the hydraulic cylinder. Place a clean rag over the plug opening and jog the “UP” button until a small amount of fluid comes out the opening. Replace the plug and re-check the reservoir fluid level as described above. If the fluid level is low, repeat all steps listed above.

9. Install the remote control in the cab by making note of the wire colors and connection locations prior to disconnecting the remote cable from the power unit. Then route the end of the cable through the floor of the pickup cab behind the driver’s seat (preferably through a rubber plug in the floor). The cable should then be routed down to the power unit where it should be reconnected. Use a stay strap to secure the cable to the front of the bottom subframe to assure clearance when the flatbed dumper is raised and lowered.

10. **Never exceed the manufacturer's gross vehicle rating of the truck.** These ratings can usually be found on the end of door just above or below the latch on the driver's side. Filling the bed with materials such as sand, stone, scrap steel, etc. could exceed the rating of the Flatbed dumper and would extremely overload the truck. Filling the bed without regard to the weight of the material being loaded can result in structural failure and injury. Never exceed the dumper and trucks maximum ratings.

**Have questions? Call Toll Free 1-800-375-3867**

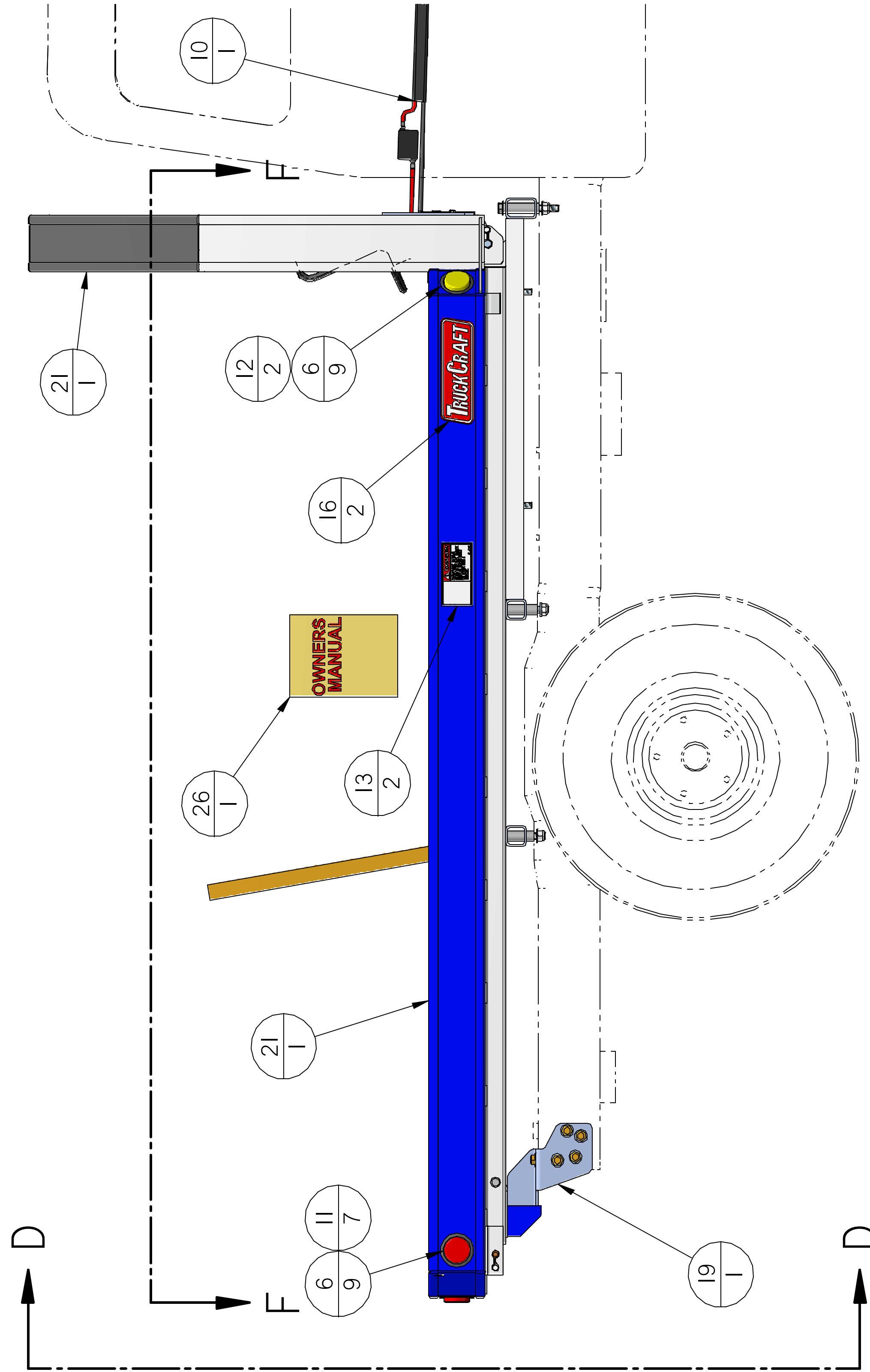
## **Maintenance**

1. Check the hydraulic fluid level and bleed the cylinder every 6 months. If additional fluid is required add Dextron Automatic Transmission Fluid. The fluid should not need to be changed unless it becomes contaminated from an outside source. To **check the fluid level and bleed the cylinder** follow step #8 in the "Mounting and Operating Instructions".
2. Never operate the vehicle if any "bounciness" or "springiness" is noted in the empty flatbed dumper when fully down. The cylinder may have air trapped inside that could cause the empty flatbed to bounce up into oncoming high wind, thus raising the dumper while moving. **BLEED THE CYLINDER IMMEDIATELY.** Follow the directions in step #8 in the "Mounting and Operating Instructions".
3. Never close off the cab guard window screen when the bed is empty . High winds and high driving speed may cause the bed to raise.
4. Lubricate the stainless steel tailgate pins periodically with WD-40.
5. Depending on frequency of use, check all bolts for proper tightness and torque.




#	P/N	Rev	Qty	Name	Material	Weight	#	P/N	Rev	Qty	Name	Material	Weight
---	-----	-----	-----	------	----------	--------	---	-----	-----	-----	------	----------	--------

1	A4-00312	A	1	Cyl. Pin	304 S. S. - .875 Dia. x 3.5 Lg.	0.58 lbm	26	I5-06122	-	1	Manual, TC-508		0.00 lbm
2	A4-00546		2	Bearing	Purchased Part	0.01 lbm	27	P4-00561		2	Hex Head Cap Screw	.38-16 X .75 18-8 SS	0.08 lbm
3	A4-00547	-	2	Bearing-88 ID x 1.0 OD x 1.0 Lg.	Iglide #GSI-1416-16	0.01 lbm	28	P4-00562		3	Hex Hd Cap Screw - .38-16 X1.0 SS	.38-16 X 1.00 18-8 SS	0.15 lbm
4	A4-00548		2	GLIDE Bearing, 1.00"	Purchased Part	0.08 lbm	29	P4-00567		5	Nyl. Insert Lock Nut - .38-16 SS	.38-16 18-8 S.S.	0.12 lbm
5	A4-00611	-	1	Hyd. Hose .38 JIC Swivelx36"		0.72 lbm	30	P4-00570		4	Flat Washer - .38 SS	.38 18-8 SS	0.03 lbm
6	A4-01300		9	Grommet, 2.5"	Purchased	0.43 lbm	31	P4-00571		6	Flat Washer / MS15795 - .75 SS	Stainless Steel, 304,.75"	0.26 lbm
7	A4-01400	A	1	Decal, Manual	Vinyl w/ Adhesive Backing	0.01 lbm	32	P4-00620		4	Flat Washer - .50 SS	.50 18-8 SS	0.06 lbm
8	A4-01401	-	1	Decal / Serial #	Purchased Part	0.00 lbm	33	P4-00689		4	Hex Hd Cap Screw - .50-13 X 1.25 SS	.50-13 X 1.25 18-8 SS	0.45 lbm
9	A4-02254		1	Decal / Warning / Caution	Purchased Part	0.03 lbm	34	P4-00835		2	Hex Head Cap Screw	.38-16 X 1.50 18-8 SS	0.13 lbm
10	A4-03313	A	1	Braided Duplex Cord/4 GAX16'-4"/Bl-Rd		7.03 lbm	35	P4-01264	-	3	Cotter Pin - S.S.	.31 Dia x 1.25 Lg. 18-8 SS	0.06 lbm
11	A4-04459	-	7	Light, Clearance	2.50 Dia. LED Red Light	1.08 lbm	36	P4-03267		5	Hex Head Cap Screw	.63 - 11 x 3.5" ZP, Grade 8	1.92 lbm
12	A4-04460	-	2	Light, Clearance	2.50 Dia. LED Yellow Light	0.31 lbm	37	P5-05010		5	Nyl. Insert Lock Nut/Gr 8	.63-11 ZP Steel/Gr 8	0.46 lbm
13	A4-04684	-	2	Decal / Danger Crush. Hazard	Purchased Part	0.06 lbm	38	P5-05013		14	Flat Washer-Hardened-5/8	ZP Steel/69 ID x 1.31 OD x .122	0.48 lbm
14	B4-00192	A	2	Bearing Block	Alum, 6061-T6 .75 x 2.5 x 3.0	0.92 lbm					Thk		
15	B4-00329	A	4	Plate-Mounting TC-120	.38"or.25"x4.0"x4.0"6061-T6 Al: R5-00343orR5-01049	2.34 lbm	39	P5-05630	-	1	Elbow-37 Degree x ORB	Brennan #6801-06-08-NWO-FG	0.24 lbm
16	B4-04077		2	Medium LOGO / Plastic	Purchased	0.00 lbm	40	P5-05680	-	1	Cap, Square - Solenoid Cover	1.75 sq. vinyl/Mc#9092K72	0.01 lbm
17	B4-04135	-	1	Hyd. Ftg.-Elbow 90	Steel - .38 JIC X #6 SAE	0.14 lbm							
18*	C4-01353		1	Harness- Flatbed	Purch. - Elect. Wiring Harness	1.50 lbm							
19	D2-06084	E	1	Installation-Ford Frame Adapter /TC-508		131.89 lbm							
20	See Notes	C	1	Base Frame Weld./TC-101, I21 & 508/Std.		62.99 lbm							
21	D3-06082	-	1	Weld. - Deck & Cabguard		413.52 lbm							
22	D4-05629	-	1	Hydraulic Pump/Tank #M-3519-0303		36.65 lbm							
23	D4-05882	-	1	Pivot Pin / .75 OD x 46.88"lg / Deck Box	304 SS, .75 Dia x 46.88 Lg.	5.96 lbm							
24	D4-05985	-	1	Telescopic Cyl.-TC-101 & I21	HDM # 030111A	52.00 lbm							
25	D4-06141	-	1	Caution/Capacity Decal - TC-101	Vinyl	0.01 lbm							

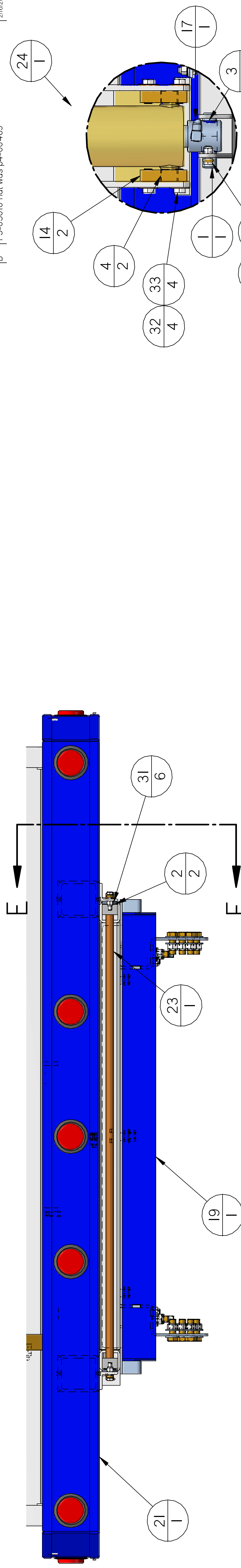


Notes:  
 Drawing is for DI-06088 & DI-06195.  
 BIM change as follows:  
 Item 20 Base Frame Weldment P/N  
 D3-05262 for 100" Deck/56" CA/DI-06088  
 D3-05513 for 80" Deck/40" CA/DI-06195

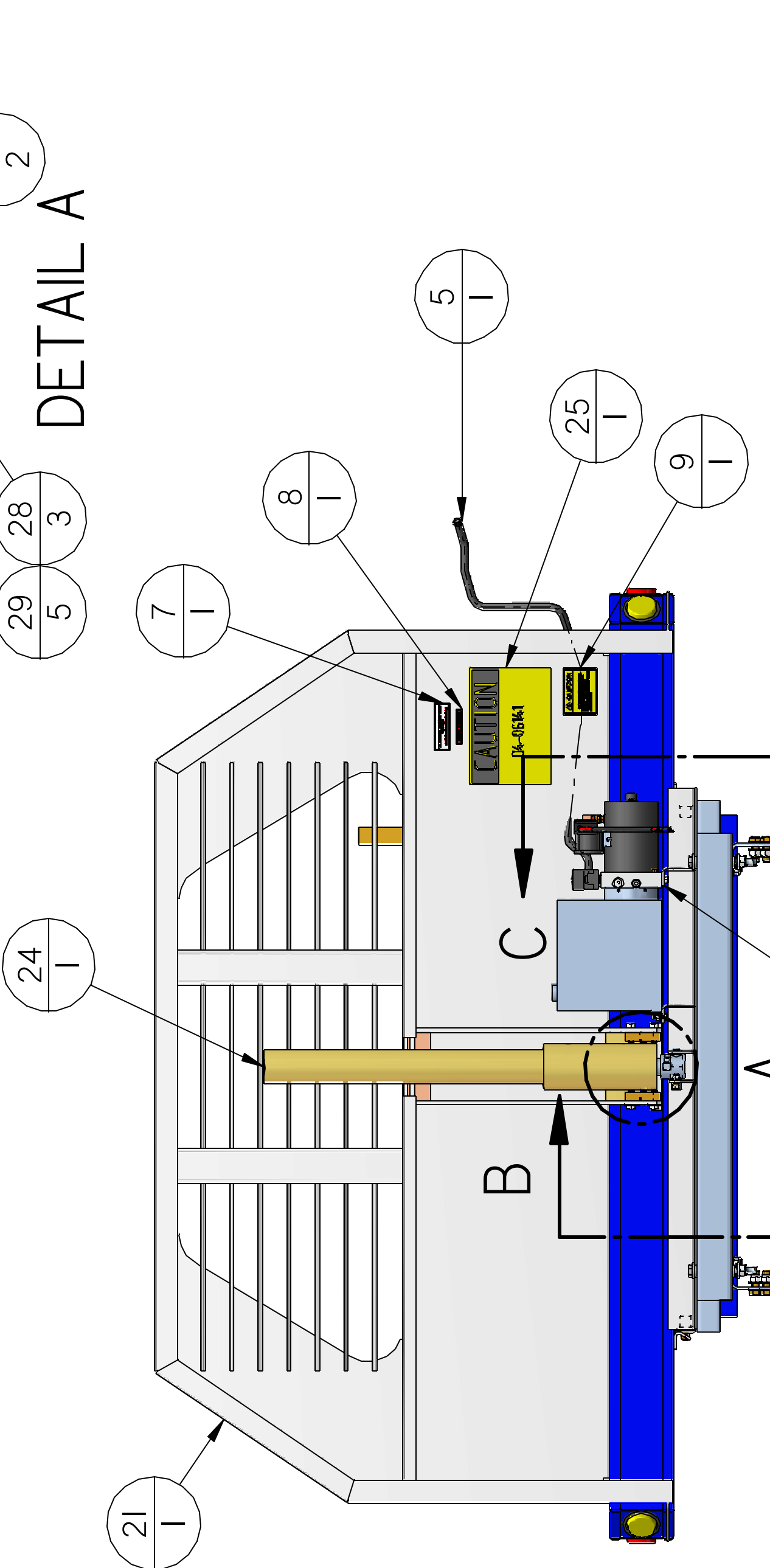
  
 5751 Molly Pitcher Highway  
 Chambersburg, PA, 17201  
 717.375.2900  
 FAX 717.375.2975

1. FINISH ALL WELDS, CHAMFER OR  
 BEVEL CORNERS  
 2. DIMENSIONS UNLESS OTHERWISE  
 SPECIFIED  
 3. DIMENSIONS TO CENTER UNLESS  
 SPECIFIED  
 4. DIMENSIONS TO FACE UNLESS  
 SPECIFIED  
 5. DIMENSIONS TO CENTER UNLESS  
 SPECIFIED  
 6. DIMENSIONS TO FACE UNLESS  
 SPECIFIED  
 7. DIMENSIONS TO CENTER UNLESS  
 SPECIFIED  
 8. DIMENSIONS TO FACE UNLESS  
 SPECIFIED  
 9. DIMENSIONS TO CENTER UNLESS  
 SPECIFIED  
 10. DIMENSIONS TO FACE UNLESS  
 SPECIFIED  
 11. DIMENSIONS TO CENTER UNLESS  
 SPECIFIED  
 12. DIMENSIONS TO FACE UNLESS  
 SPECIFIED  
 13. DIMENSIONS TO CENTER UNLESS  
 SPECIFIED  
 14. DIMENSIONS TO FACE UNLESS  
 SPECIFIED  
 15. DIMENSIONS TO CENTER UNLESS  
 SPECIFIED  
 16. DIMENSIONS TO FACE UNLESS  
 SPECIFIED  
 17. DIMENSIONS TO CENTER UNLESS  
 SPECIFIED  
 18. DIMENSIONS TO FACE UNLESS  
 SPECIFIED  
 19. DIMENSIONS TO CENTER UNLESS  
 SPECIFIED  
 20. DIMENSIONS TO FACE UNLESS  
 SPECIFIED  
 21. DIMENSIONS TO CENTER UNLESS  
 SPECIFIED  
 22. DIMENSIONS TO FACE UNLESS  
 SPECIFIED  
 23. DIMENSIONS TO CENTER UNLESS  
 SPECIFIED  
 24. DIMENSIONS TO FACE UNLESS  
 SPECIFIED  
 25. DIMENSIONS TO CENTER UNLESS  
 SPECIFIED  
 26. DIMENSIONS TO FACE UNLESS  
 SPECIFIED  
 27. DIMENSIONS TO CENTER UNLESS  
 SPECIFIED  
 28. DIMENSIONS TO FACE UNLESS  
 SPECIFIED  
 29. DIMENSIONS TO CENTER UNLESS  
 SPECIFIED  
 30. DIMENSIONS TO FACE UNLESS  
 SPECIFIED  
 31. DIMENSIONS TO CENTER UNLESS  
 SPECIFIED  
 32. DIMENSIONS TO FACE UNLESS  
 SPECIFIED  
 33. DIMENSIONS TO CENTER UNLESS  
 SPECIFIED  
 34. DIMENSIONS TO FACE UNLESS  
 SPECIFIED  
 35. DIMENSIONS TO CENTER UNLESS  
 SPECIFIED  
 36. DIMENSIONS TO FACE UNLESS  
 SPECIFIED  
 37. DIMENSIONS TO CENTER UNLESS  
 SPECIFIED  
 38. DIMENSIONS TO FACE UNLESS  
 SPECIFIED  
 39. DIMENSIONS TO CENTER UNLESS  
 SPECIFIED  
 40. DIMENSIONS TO FACE UNLESS  
 SPECIFIED

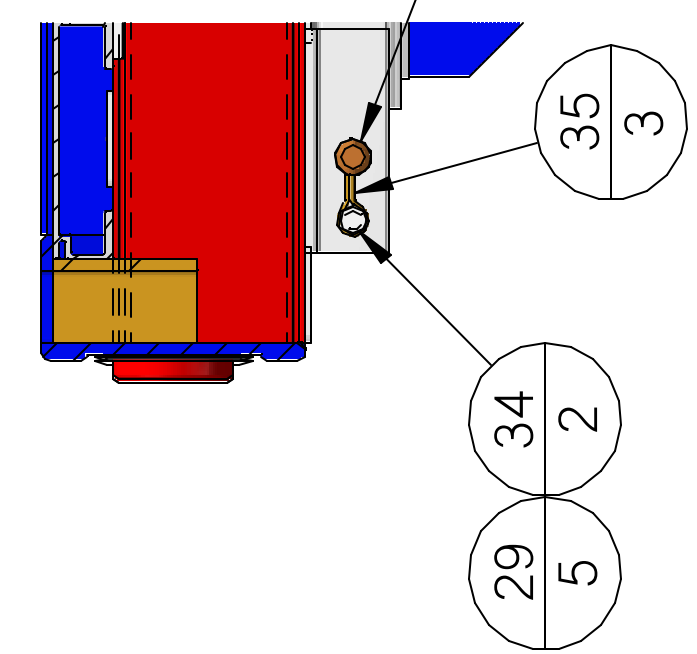
TITLE: TC-508/SRW Ford  
 SCALE: None  
 DATE: 12/17/2010  
 MATERIAL:  
 SHEET 1 OF 2  
 DRAWN BY: GertYL  
 DWG NO: DI-06088  
 REVISION: 731.55 lbrn  
 APPR BY:



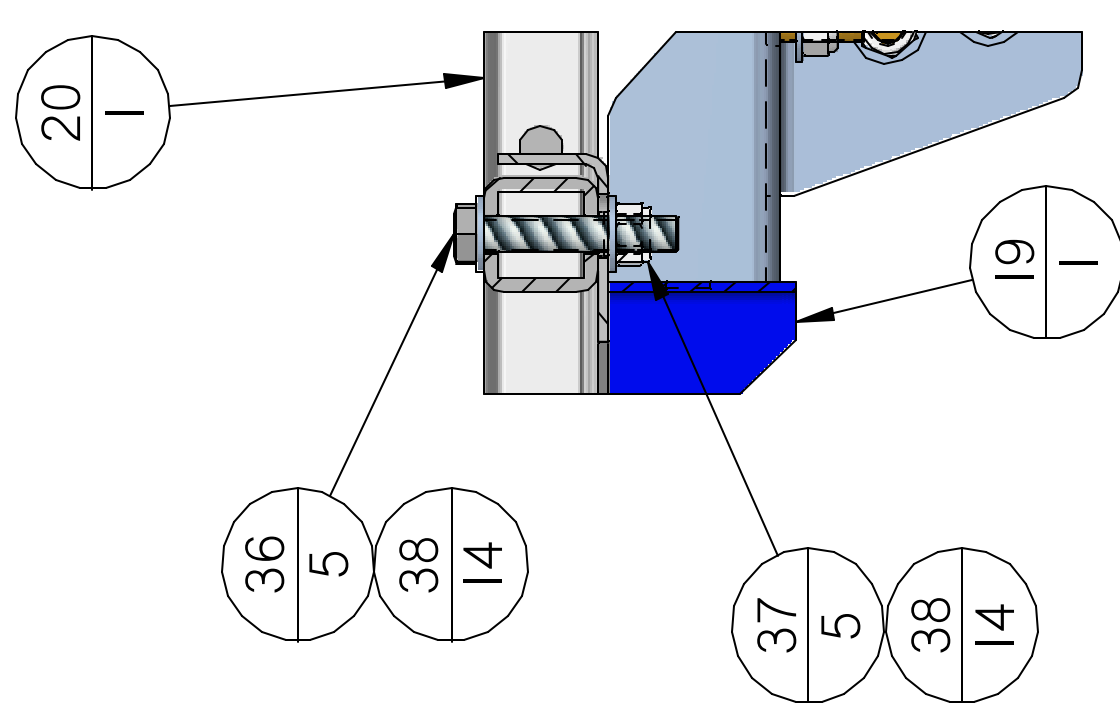
VIEW D-D



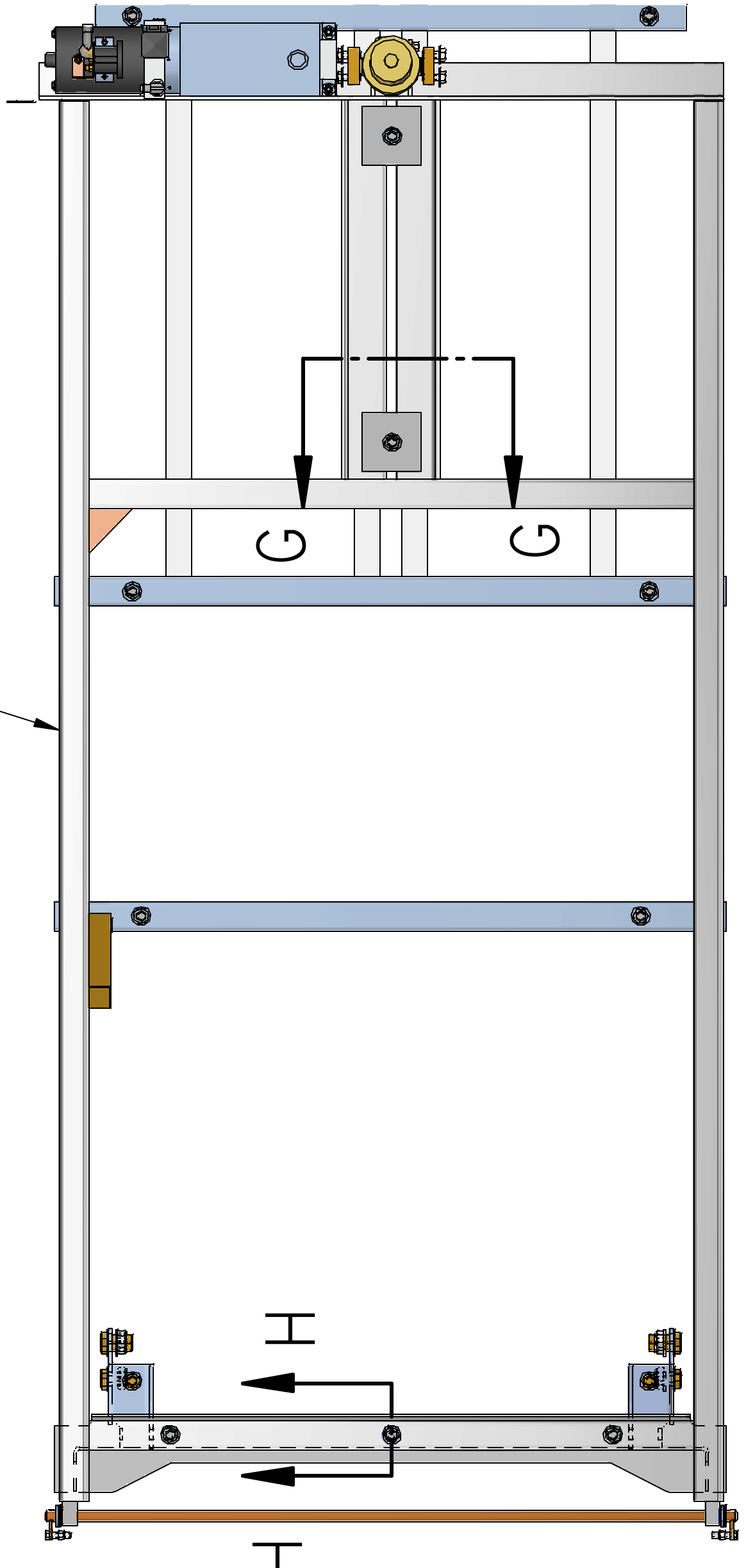
DETAIL A



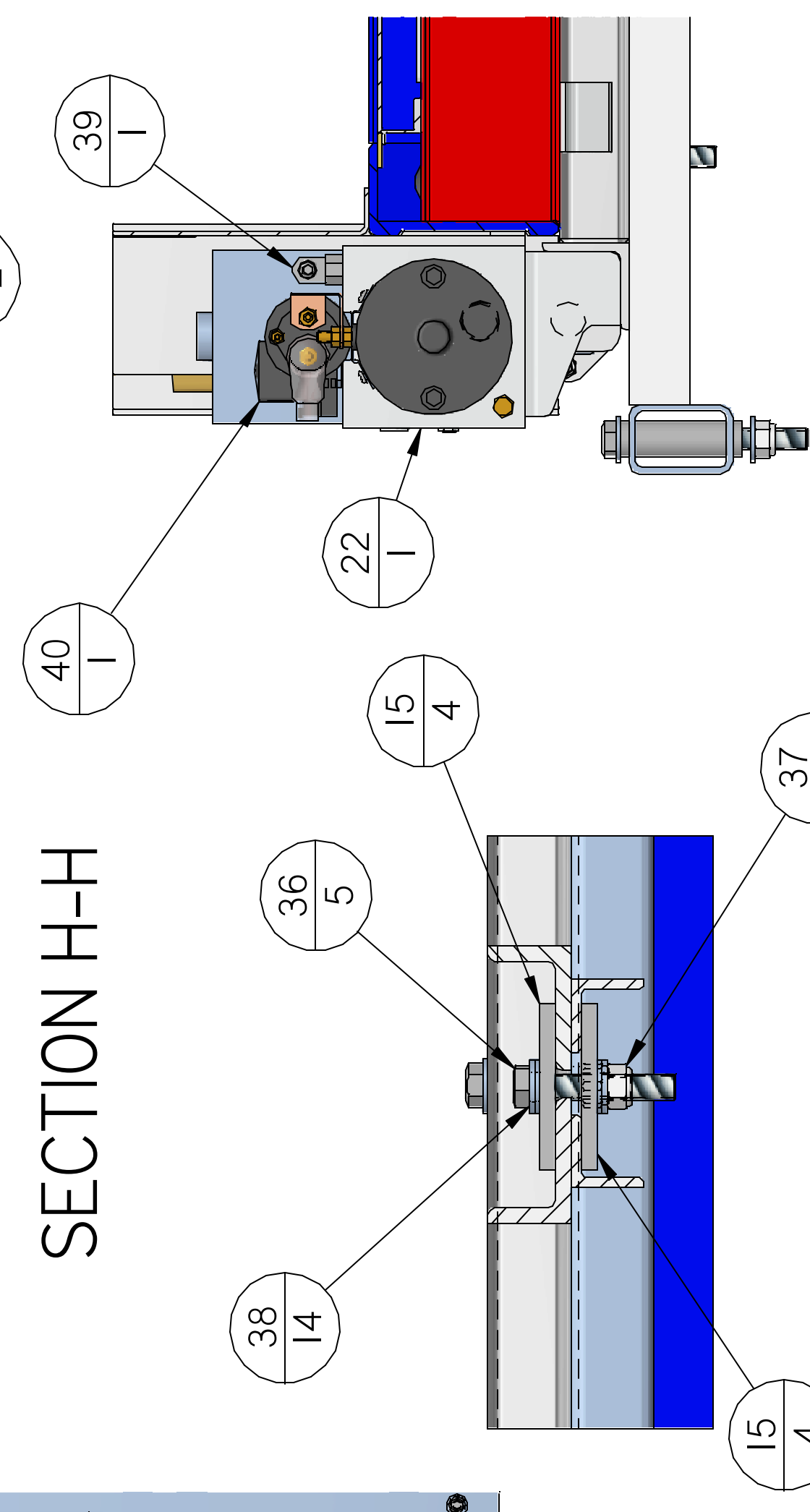
SECTION E-E



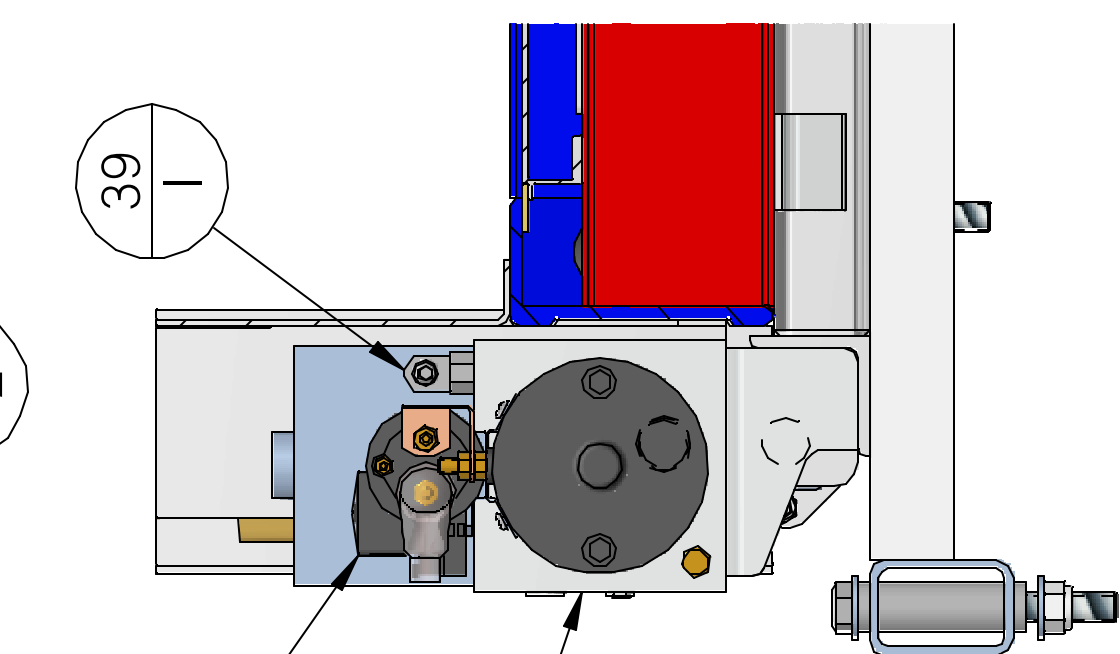
SECTION H-H



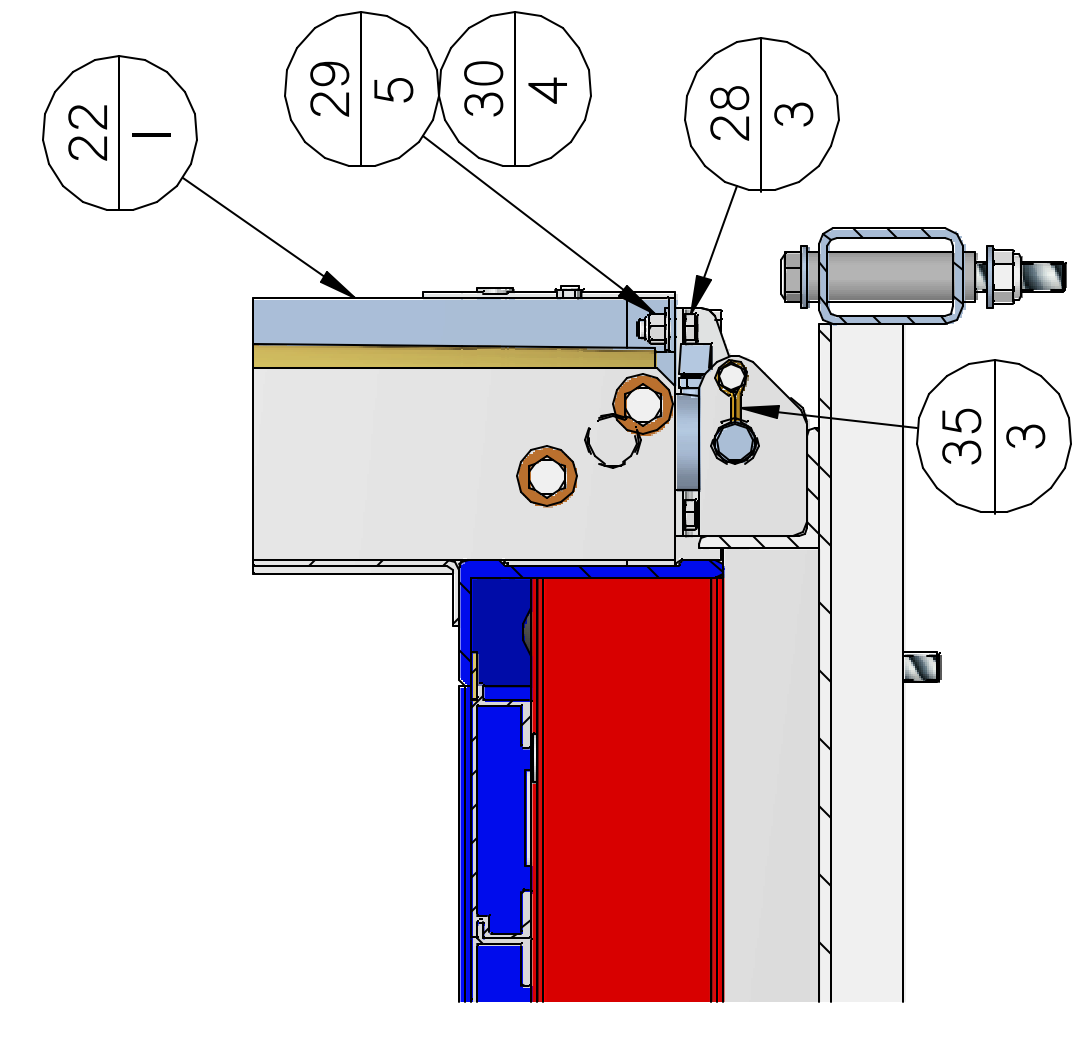
VIEW F-F



SECTION G-G

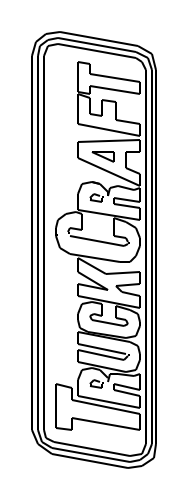


SECTION C-C



SECTION B-B

1. FINISH ALL LARGE CHAMFER OR  
 2. FINISH ALL CORNERS  
 3. DIMENSIONS UNLESS OTHERWISE  
 SPECIFIED  
 4. DIMENSIONS TO FACE UNLESS  
 SPECIFIED  
 5. DIMENSIONS TO CENTER UNLESS  
 SPECIFIED  
 6. DIMENSIONS TO CENTER UNLESS  
 SPECIFIED  
 7. DIMENSIONS TO CENTER UNLESS  
 SPECIFIED  
 8. DIMENSIONS TO CENTER UNLESS  
 SPECIFIED  
 9. DIMENSIONS TO CENTER UNLESS  
 SPECIFIED  
 10. DIMENSIONS TO CENTER UNLESS  
 SPECIFIED  
 11. DIMENSIONS TO CENTER UNLESS  
 SPECIFIED  
 12. DIMENSIONS TO CENTER UNLESS  
 SPECIFIED  
 13. DIMENSIONS TO CENTER UNLESS  
 SPECIFIED  
 14. DIMENSIONS TO CENTER UNLESS  
 SPECIFIED  
 15. DIMENSIONS TO CENTER UNLESS  
 SPECIFIED  
 16. DIMENSIONS TO CENTER UNLESS  
 SPECIFIED  
 17. DIMENSIONS TO CENTER UNLESS  
 SPECIFIED  
 18. DIMENSIONS TO CENTER UNLESS  
 SPECIFIED  
 19. DIMENSIONS TO CENTER UNLESS  
 SPECIFIED  
 20. DIMENSIONS TO CENTER UNLESS  
 SPECIFIED  
 21. DIMENSIONS TO CENTER UNLESS  
 SPECIFIED  
 22. DIMENSIONS TO CENTER UNLESS  
 SPECIFIED  
 23. DIMENSIONS TO CENTER UNLESS  
 SPECIFIED  
 24. DIMENSIONS TO CENTER UNLESS  
 SPECIFIED  
 25. DIMENSIONS TO CENTER UNLESS  
 SPECIFIED  
 26. DIMENSIONS TO CENTER UNLESS  
 SPECIFIED  
 27. DIMENSIONS TO CENTER UNLESS  
 SPECIFIED  
 28. DIMENSIONS TO CENTER UNLESS  
 SPECIFIED  
 29. DIMENSIONS TO CENTER UNLESS  
 SPECIFIED  
 30. DIMENSIONS TO CENTER UNLESS  
 SPECIFIED  
 31. DIMENSIONS TO CENTER UNLESS  
 SPECIFIED  
 32. DIMENSIONS TO CENTER UNLESS  
 SPECIFIED  
 33. DIMENSIONS TO CENTER UNLESS  
 SPECIFIED  
 34. DIMENSIONS TO CENTER UNLESS  
 SPECIFIED  
 35. DIMENSIONS TO CENTER UNLESS  
 SPECIFIED  
 36. DIMENSIONS TO CENTER UNLESS  
 SPECIFIED  
 37. DIMENSIONS TO CENTER UNLESS  
 SPECIFIED  
 38. DIMENSIONS TO CENTER UNLESS  
 SPECIFIED  
 39. DIMENSIONS TO CENTER UNLESS  
 SPECIFIED  
 40. DIMENSIONS TO CENTER UNLESS  
 SPECIFIED



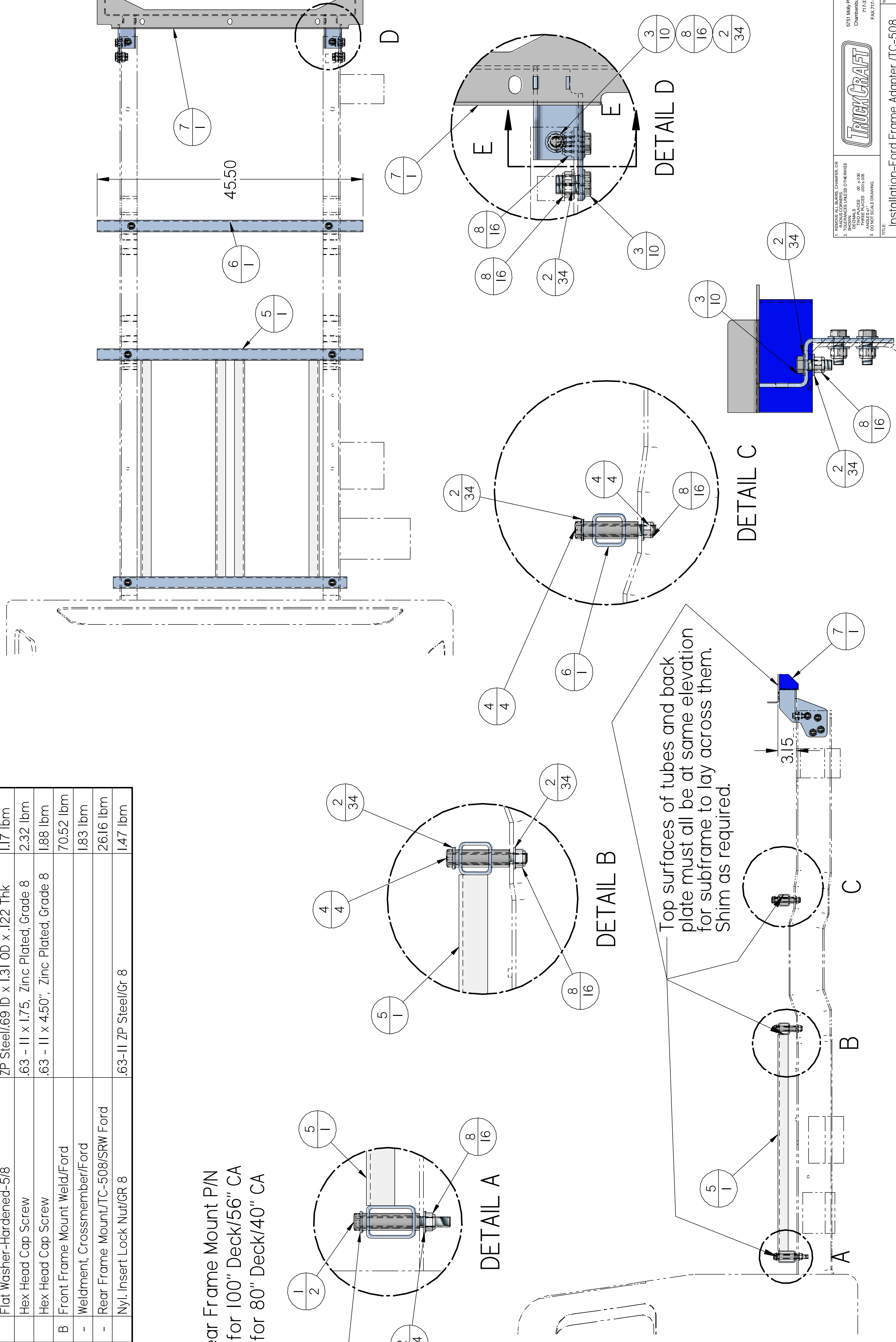
5751 Mully Picher Highway  
 Chambersburg, PA 17201  
 717.375.2900  
 FAX 717.375.2975

TITLE	TC-508/SRW Ford	MSRP	731.55 lbrn
SCALE	None	MATERIAL	
DATE	12/17/2010	APPR. BY:	GertYL
SHEET	2 OF 2	DWG. NO.	DI-06088

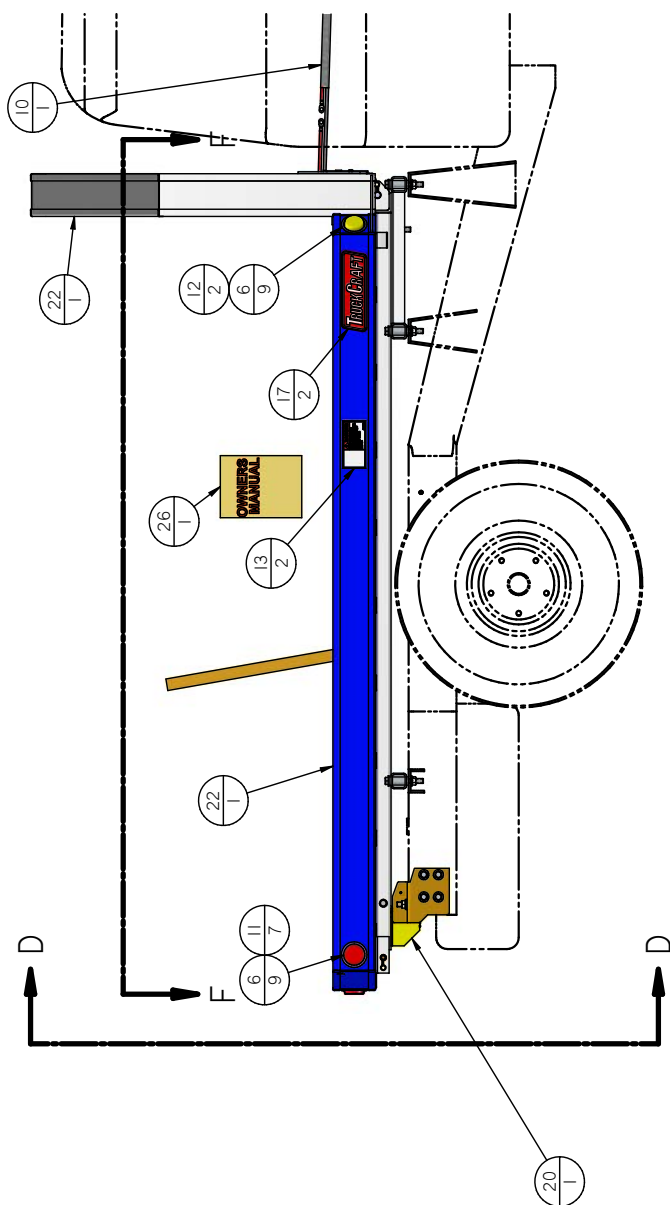
Install 2 washer-Top and Bottom-at these two location s.

#	P/N	Qty	Rev	Name	Material	Weight
1	P4-00589	2		Hex Head Cap Screw	.63 - 11 x 5.50", Zinc Plated, Grade 5	1.12 lbm
2	P5-05013	34		Flat Washer-Hardened-5/8	ZP Steel/.69 ID x 1.31 OD x .122 Thk	1.17 lbm
3	P4-00468	10		Hex Head Cap Screw	.63 - 11 x 1.75, Zinc Plated, Grade 8	2.32 lbm
4	P5-05102	4		Hex Head Cap Screw	.63 - 11 x 4.50", Zinc Plated, Grade 8	1.88 lbm
5	D3-06099	1	B	Front Frame Mount Weld/Ford		70.52 lbm
6	D3-06103	1	-	Weldment, Crossmember/Ford		1.83 lbm
7	See Notes	1	-	Rear Frame Mount/TC-508/SRW Ford		26.16 lbm
8	P5-05010	16		Nyl. Insert Lock Nut/GR 8	.63-11 ZP Steel/Gr 8	1.47 lbm

Note:  
Item 7 - Rear Frame Mount P/N  
D3-06252 for 100" Deck/56" CA  
D3-06860 for 80" Deck/40" CA



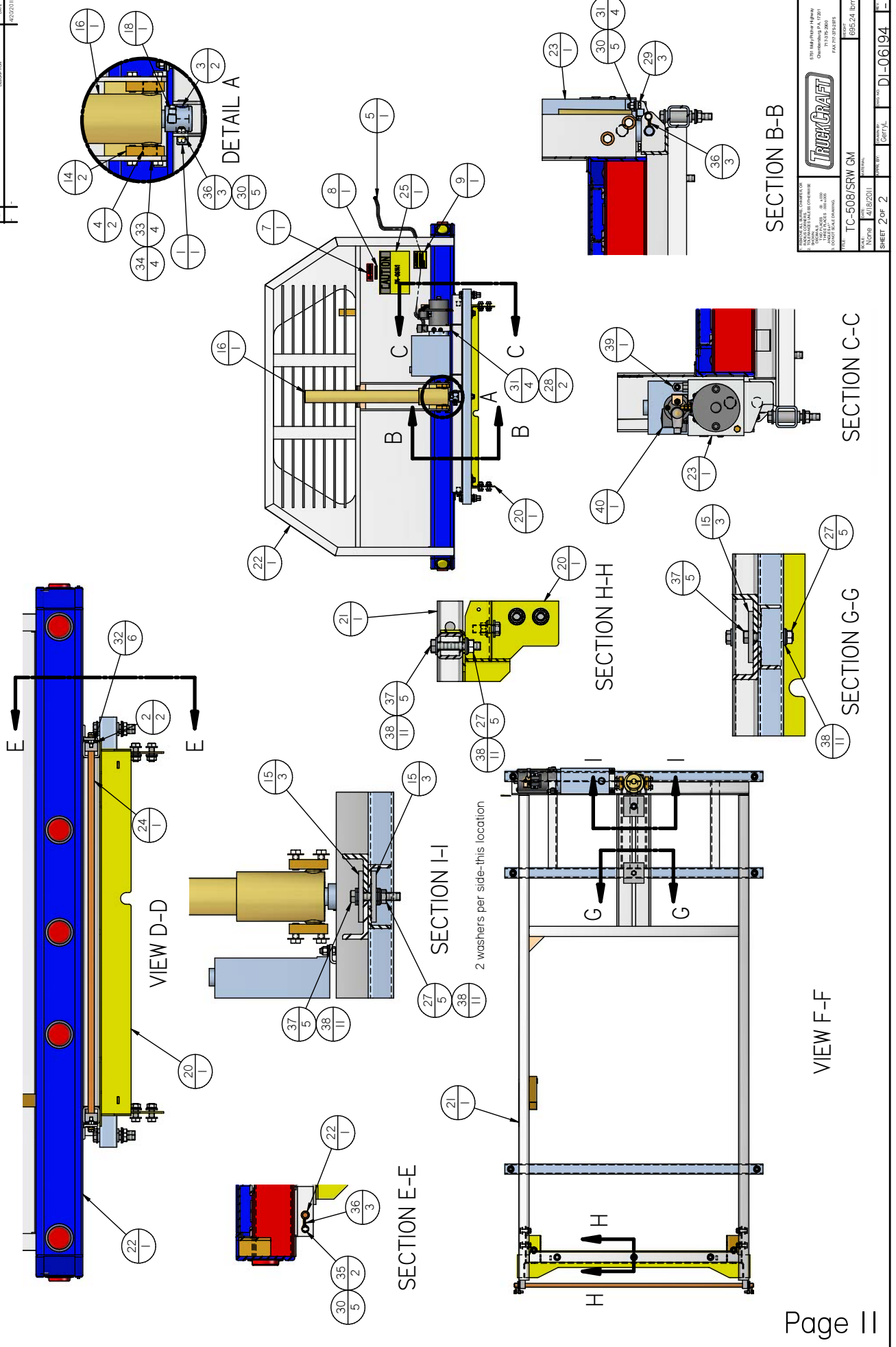
#	P/N	Qty	Name	Weight	#	P/N	Qty	Name	Weight
1	A4-00312	1	Cyl. Pin	0.58 lbm	26	5-06122	1	Manual, TC-508	
2	A4-00546	2	Bearing	0.01 lbm	27	P4-00469	5	Hex Flange Nut	0.50 lbm
3	A4-00547	2	Bearing--88 ID x 1.0 OD x 1.0 Lg.	0.01 lbm	28	P4-00561	2	Hex Head Cap Screw	0.08 lbm
4	A4-00548	2	IGLIDE Bearing, 1.00"	0.08 lbm	29	P4-00562	3	Hex Hd Cap Screw - 38-16 X1.0 SS	0.15 lbm
5	A4-00611	1	Hyd. Hose .38 JIC Swivel x 36"	0.72 lbm	30	P4-00567	5	Nyl. Insert Lock Nut - 38-16 SS	0.12 lbm
6	A4-01300	9	Grommet, 2.5"	0.43 lbm	31	P4-00570	4	Flat Washer - .38 SS	0.03 lbm
7	A4-01400	1	Decal, Manual	0.01 lbm	32	P4-00571	6	Flat Washer / MS15795 - .75 SS	0.26 lbm
8	A4-01401	1	Decal / Serial #	0.00 lbm	33	P4-00620	4	Flat Washer - .50 SS	0.06 lbm
9	A4-02254	1	Decal / Warning / Caution	0.03 lbm	34	P4-00689	4	Hex Hd Cap Screw - 50-13 X 1.25 SS	0.45 lbm
10	A4-03313	1	Braided Duplex Cord/4 GAX16-4"/BL-Rd	7.03 lbm	35	P4-00835	2	Hex Head Cap Screw	0.13 lbm
11	A4-04459	7	Light, Clearance	1.08 lbm	36	P4-01264	3	Cotter Pin - S.S.	0.06 lbm
12	A4-04460	2	Light, Clearance	0.31 lbm	37	P4-03267	5	Hex Head Cap Screw	1.92 lbm
13	A4-04684	2	Decal / Danger Crush, Hazard	0.06 lbm	38	P5-05013	11	Flat Washer-Hardened-5/8	0.38 lbm
14	B4-00192	2	Bearing Block	0.92 lbm	39	P5-05630	1	Elbow-37 Degree x ORB	0.24 lbm
15	B4-00329	3	Plate-Mounting TC-120	1.76 lbm	40	P5-05680	1	Cap. Square - Solenoid Cover	0.01 lbm
16	D4-05985	1	Telescopic Cylinder, TC-120	52.00 lbm					
17	B4-04077	2	Medium L060 / Plastic	0.00 lbm					
18	B4-04135	1	Hyd. Fig.-Elbow 90	0.14 lbm					
19	C4-01353	1	Harness-Flatbed	1.50 lbm					
20	D2-06222	1	Installation-GM Frame Adapter/TC-508	105.46 lbm					
21	D3-05262	1	Base Frame Weld/TC-101, 121 & 508/Std.	62.99 lbm					
22	D3-06082	1	Weld - Deck & Cabguard	373.56 lbm					
23	D4-05629	1	Hydraulic Pump/Tank #M-3519-0303	36.65 lbm					
24	D4-05882	1	Pivot Pin / .75 OD x 46.88"lg / Deck Box	5.96 lbm					
25	D4-06141	1	Caution/Capacity Decal - TC-101	0.01 lbm					



  
 TRUCK CRAFT COMPANY, INC.  
 1701 IMPERIAL HWY  
 OMAHA, NE 68104  
 PHONE: 402.426.1000  
 FAX: 402.426.1000  
 WWW.TRUCKCRAFT.COM

MODEL: TC-508/SRW GM  
 SERIAL: 41182011  
 NAME: [Blank]  
 SHEET 1 OF 2

WEIGHT: 695.24 lbm  
 PART NO: DI-06194



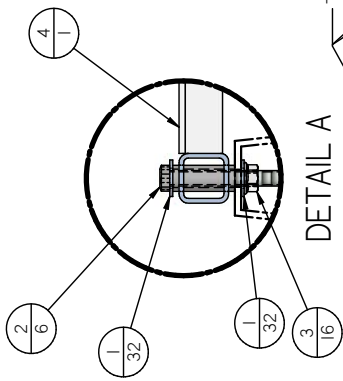
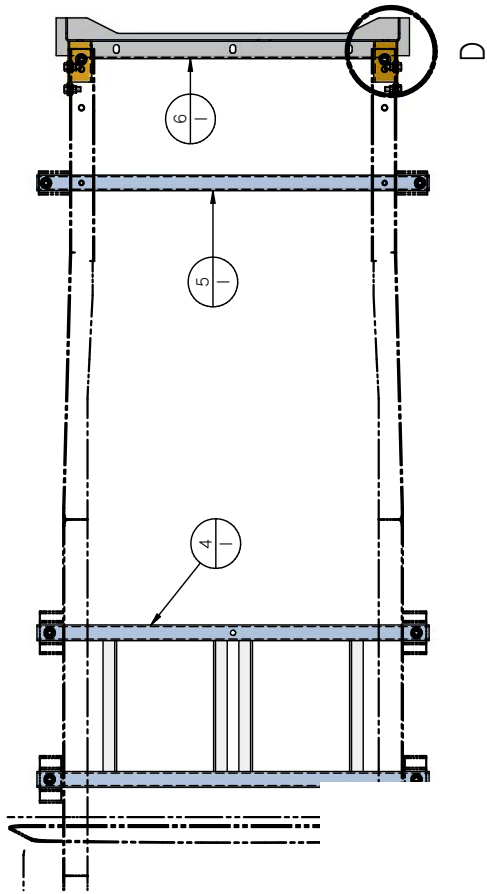
**TRUARC**  
A TRUCK CRAFT COMPANY

TRUCK CRAFT  
1750 IMPERIAL HWY  
ONTARIO, CA 91761  
TEL: 951-820-1100  
FAX: 951-820-1595  
E-MAIL: SALES@TRUCKCRAFT.COM

MODEL: TC-508/SRW GM  
SERIAL: 01182011  
P/N: 696248  
REV: 01

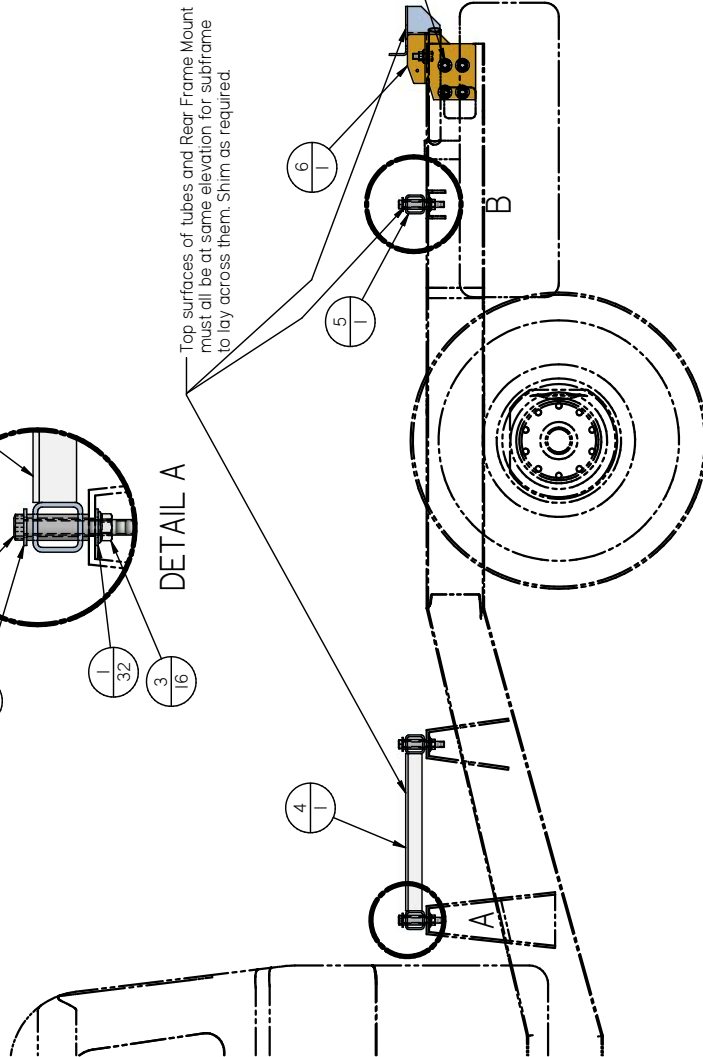
DATE: 4/20/2018  
DRAWING NO. 47420181  
SHEET 2 OF 2  
DI-06194

#	P/N	Qty	Name	Weight
1	P5-05012	32	Flat Washer-Hardened	1.34 lbm
2	P5-05102	6	Hex Head Cap Screw	2.83 lbm
3	P4-00469	16	Hex Flange Nut	1.61 lbm
4	D3-06155	1	Front Frame Weldment/GM	50.66 lbm
5	D3-06224	1	Frame Mount, Mid/GM	1.83 lbm
6	D3-06152	1	Rear Frame Mount/GM	25.85 lbm
7	P4-00468	10	Hex Head Cap Screw	2.32 lbm



DETAIL A

Top surfaces of tubes and Rear Frame Mount must all be at same elevation for subframe to lay across them. Shim as required.



B

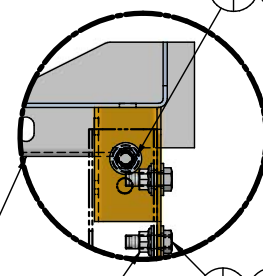
Dr. .66 Dia. (21/32) holes for 62 Dia. bolts as required. Some existing holes may need to be enlarged.



DETAIL B



DETAIL D

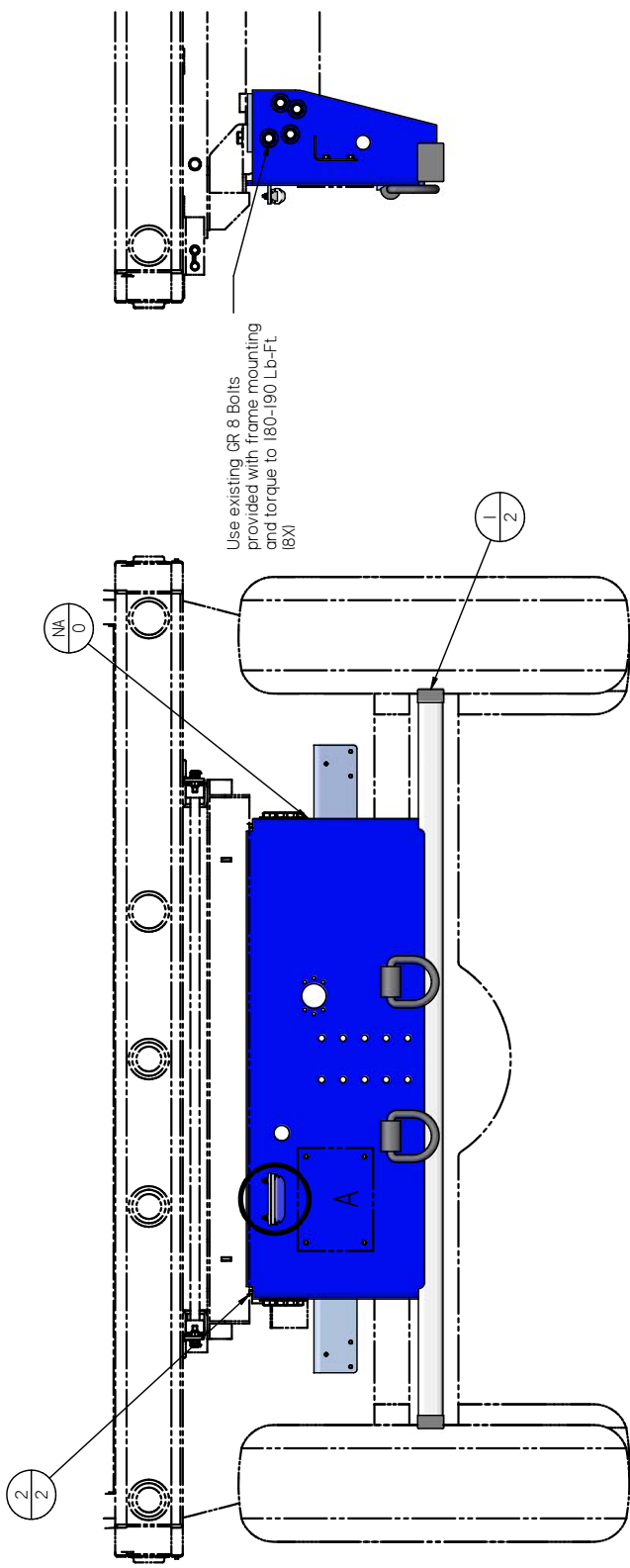
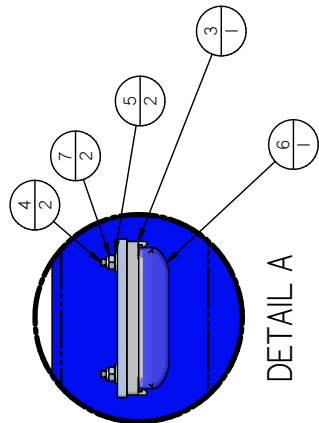


TRUCKCRAFT
   
 170 IMPERIAL AVENUE
   
 CHANDLER, AZ 85008
   
 PHONE: 480-948-7000
   
 FAX: 480-948-7001
   
 E-MAIL: SALES@TRUCKCRAFT.COM

NAME: Installation-GM Frame Adapter (TC-508)
   
 PART NO.: 105-46 lbm
   
 SHEET 1 OF 1
   
 DATE: 2/28/2011
   
 DRAWN BY: CAPYL
   
 CHECKED BY:
   
 D2-06222

DATE: 7/14/2011  
 DESCRIPTION: New license plate light and mount.

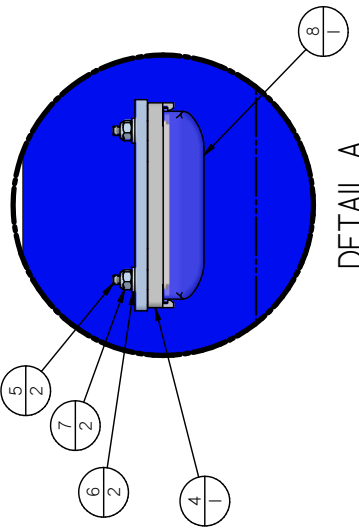
#	P/N	Qty	Name	Weight
1	P5-05184	2	Cap, 2.0 x 3.0 Tube	0.07 lbm
2	D4-06094	2	Shim, Bumper Mount	0.38 lbm
3	P5-06325	1	License Plate Light Holder	0.05 lbm
4	P4-00886	2	Pan Head Machine Screw	0.02 lbm
5	P4-00845	2	Flat Washer	0.01 lbm
6	P5-26323	1	License Plate Light	0.12 lbm
7	P4-00887	2	Nyl. Insert Lock Nut - #10-32	0.01 lbm



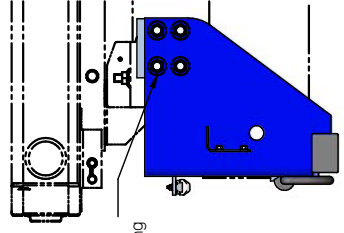
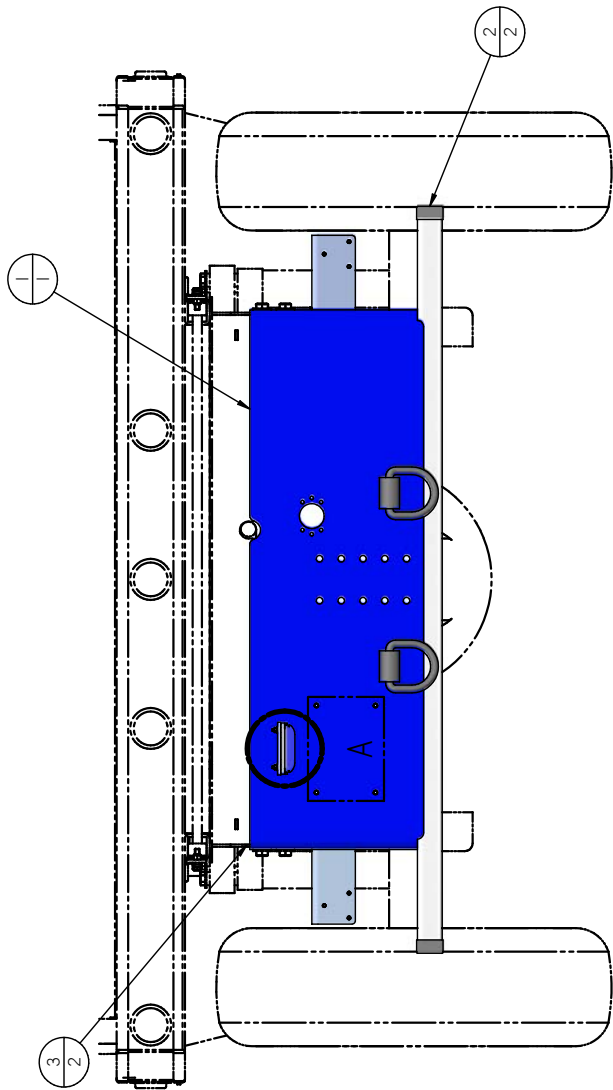
  
 TRUCKCRAFT  
 1701 IMPERIAL HWY  
 OKEMUNOGE, OK 73161  
 PHONE: 405-271-8000  
 FAX: 405-271-8000  
 WWW.TRUCKCRAFT.COM

P/N: P4-00887  
 NAME: Pintle Hitch Bumper Assy/TC-508-Ford  
 WEIGHT: 111.35 lbm  
 DATE: 7/14/2011  
 SHEET 1 OF 1  
 PART NO: D2-06106

#	P/N	Qty	Name	Weight
1	D3-06230	1	TC-508 Pintle Hitch Bumper-GM	124.29 lbrn
2	P5-05184	2	Cap. 2.0 x 3.0 Tube	0.07 lbrn
3	D4-06232	2	Shirn, Bumper Mount/GM	0.38 lbrn
4	P5-06325	1	License Plate Light Holder	0.05 lbrn
5	P4-00886	2	Pan Head Machine Screw	0.02 lbrn
6	P4-00845	2	Flat Washer	0.01 lbrn
7	P4-00887	2	Nyl. Insert Lock Nut - #10-32	0.01 lbrn
8	P5-26323	1	License Plate Light	0.12 lbrn




DETAIL A



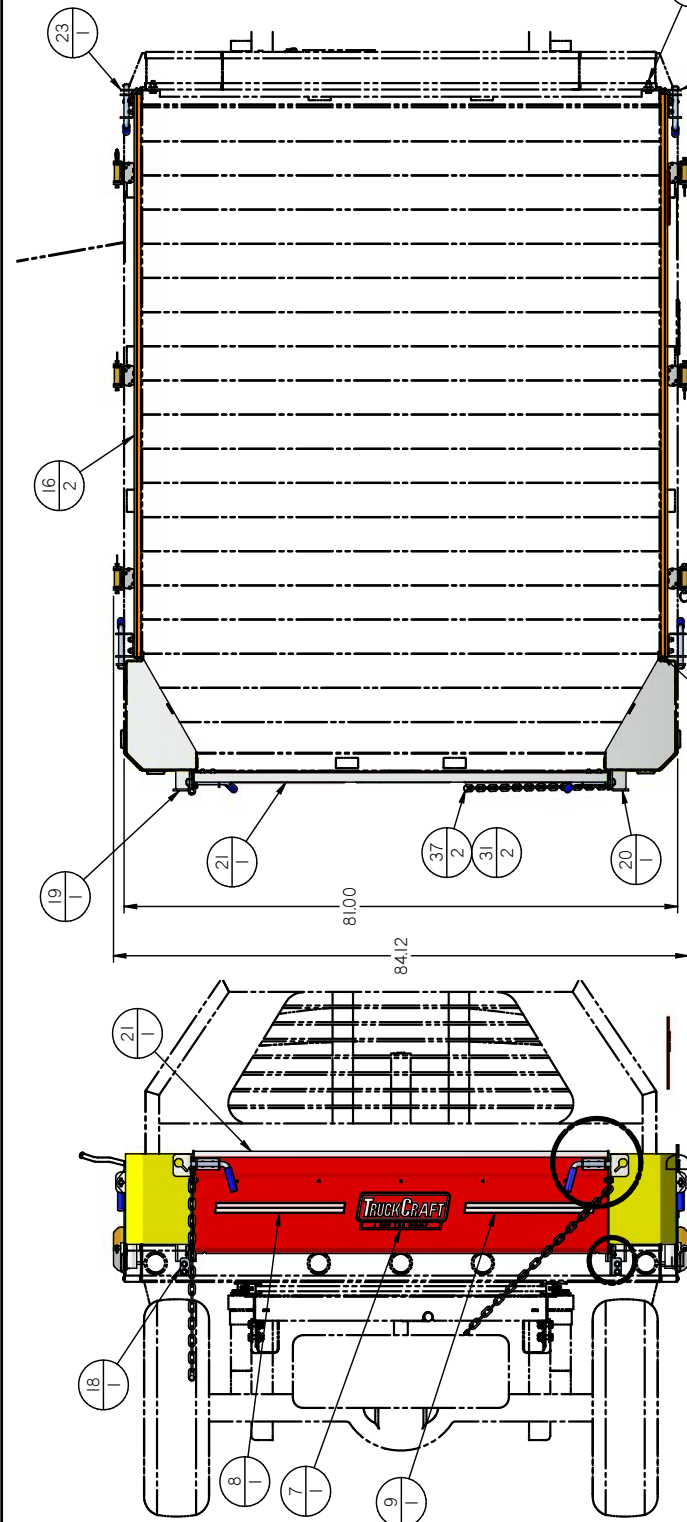
Use existing GR 8 Bolts provided with frame mounting and torque to 180-190 Lb-Ft (8X)

REV: 3  
 Description: New license plate light and mount.  
 DATE: 7/14/2011

  
 TRUCK CRAFT  
 170 IMPERIAL HWY  
 CHANDLER, AZ 85226  
 PHONE: 480-488-8888  
 FAX: 480-488-8889  
 WWW.TRUCKCRAFT.COM

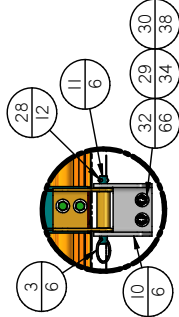
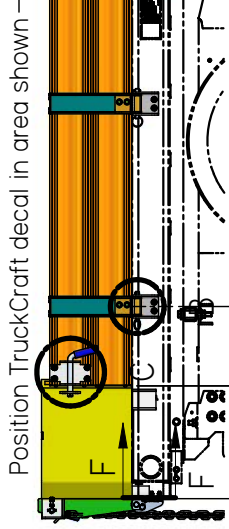
Part Name: Pintle Hitch Bumper Assy/TC-508/GM | 132.12 lbrn  
 Part No: 42012011  
 Part No: 42012011  
 SHEET 1 OF 1  
 DATE: 7/14/2011  
 DRAWN BY: CEPT/L  
 CHECKED BY: D2-06231 | B



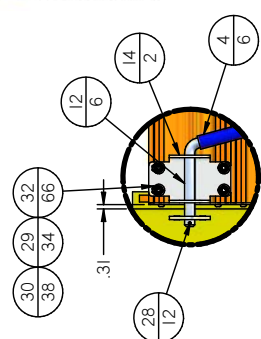


Install tailgate locking pins and mounts per detail D. Use the locking pins to position the tailgate on the corner weldments. Install hinges and use as a template to drill 4 - .41 Dia. (1 3/32) holes thru rear rub rail. Attach hinges with called out hardware.

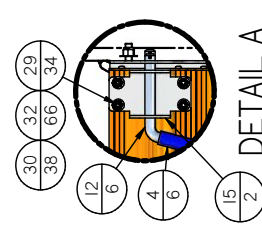
After installing corner weldments in flatbed pockets, position rack sides using the .06" and .34" dimensions shown in details A & B. Mount hinges and pins. Using the hinges as a template, drill 12 - .41 Dia. (1 3/32) holes thru the rub rail and attach the hinges to the deck with the hardware called out.



DETAIL B



DETAIL C



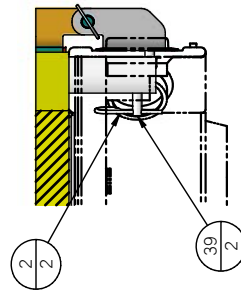
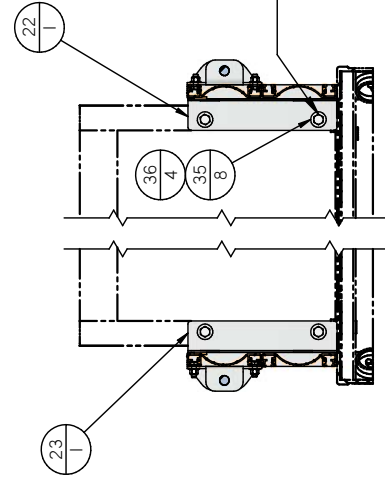
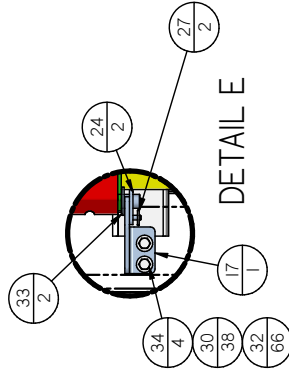
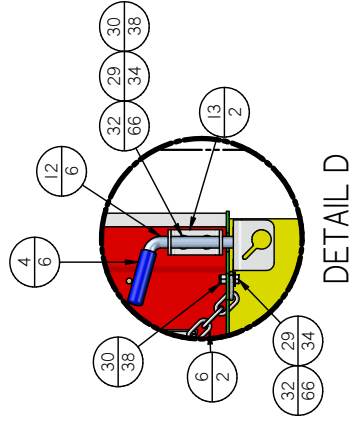
DETAIL A

TRUCKCRAFT  
 170 IMPACTWAY AVENUE  
 OMAHA, NE 68104  
 PHONE: 402.491.8888  
 FAX: 402.491.8899

ASSY: Fold Down Sides/12 TTC-508  
 PART NO: 1222011  
 REV: 1  
 SHEET 1 OF 2  
 DRAWN BY: CAPYL  
 DATE: 7/26/2011  
 97874 Item  
 DI-06198

#	P/N	Qty	Name	Weight
29	P4-00562	34	Hex Hd Cap Screw - .38-16 X1.0 SS	1.65 lbm
30	P4-00567	38	Nyl. Insert Lock Nut - .38-16 SS	0.91 lbm
31	P4-00569	2	Flat Washer - .25 SS	0.01 lbm
32	P4-00570	66	Flat Washer - .38 SS	0.44 lbm
33	P4-00571	2	Flat Washer / MS15795 - .75 SS	0.09 lbm
34	P4-00615	4	Hex Head Cap Screw	0.22 lbm
35	P4-00620	8	Flat Washer - .50 SS	0.11 lbm
36	P4-00687	4	Hex Hd Cap Screw - .50-13 X 1.50 SS	0.50 lbm
37	P4-00733	2	Xmas Tree Clip	0.02 lbm
38	P4-00836	4	Nyl. Insert Lock Nut - .50-13 SS	0.21 lbm
39	P4-02583	2	Clevis Pin	0.07 lbm

#	P/N	Qty	Name	Weight
1	A4-00397	2	Chain Sleeve	0.02 lbm
2	A4-01440	2	Hoarpin	0.06 lbm
3	A4-03004	6	1 1/2" Split Ring	0.07 lbm
4	A4-04531	6	Vinyl Grip - .75 I.D.	0.24 lbm
5	B4-04077	2	Medium LOGO / Plastic	0.00 lbm
6	B4-04147	2	Chain	2.85 lbm
7	B4-04184	1	Large LOGO Decal - 3D Effects	0.00 lbm
8	B4-04263	1	Decal Strips / Drivers Side	0.07 lbm
9	B4-04264	1	Decal Strips / Passengers Side	0.07 lbm
10	B4-04359	6	Lower Hinge Plate	6.60 lbm
11	B4-04360	6	Pivot Pin	1.44 lbm
12	B4-04361	6	Locking Pin	7.48 lbm
13	B4-04364	2	Locking Pin Mount - Rear	0.33 lbm
14	B4-04366	2	Locking Pin Mount - Side Rear	1.08 lbm
15	B4-04367	2	Locking Pin Mount - Side Front	0.93 lbm
16	D2-05890	2	Fold Down Rack Side-12"	97.61 lbm
17	D3-04761	1	Hinge Weldment - R.H.	0.67 lbm
18	D3-04766	1	Hinge Weldment - LH	0.67 lbm
19	D3-05888	1	Corner Weldment - LH-12" Sides	15.57 lbm
20	D3-05889	1	Corner Weldment-RH-12" Sides	19.66 lbm
21	D3-05891	1	Tailgate Weldment/81" w/12" Sides	411.8 lbm
22	D3-06339	1	Corner Weldment/RH	1.10 lbm
23	D3-06340	1	Corner Weldment/LH	1.10 lbm
24	D4-04762	2	Locking Plate	0.24 lbm
25	I5-05935	1	Manual, DRB TC-508	
26	M4-04817	6	Rubber - Make from P4-04816	0.03 lbm
27	P4-00388	2	3/4" Split Ring	0.01 lbm
28	P4-00410	12	Pin, Slotted Spring, 3/16" x 1.00	0.04 lbm



Drill .406 Dia. hole through leg on rear corner and install clevis pin-Typ. Both rear corners.

Use corner weldment as template, drill .562 Dia. hole through headboard for bolts show-4X.

SECTION F-F

SECTION G-G

Note: Bed decals called out on DI-06194 drawing.

TRUCKCRAFT  
 1701 IMPERIAL HWY  
 ONTARIO, CA 91701  
 FAX 714 952 8285

ASSY: Fold Down Sides/TC-508  
 DATE: 7/22/2011  
 SHEET 2 OF 2

97874 lbm

# Warranty

TruckCraft Corporation warrants each **Flatbed Dumper** to be free from defects in material and workmanship for a period of **Two Years** from the date of sale to the original retail purchaser and agrees only to repair or replace at its own expense, any part or parts of the product found to be defective in material or workmanship, provided TruckCraft is notified of such defect or defects within the **Two Year** warranty period and given reasonable time to correct the defect.

Installation and operation of the product must be in accordance with TruckCraft's instructions. Repairs required following operation beyond the rated capacity or improper use or application of any products shall not be considered defects within the scope of the foregoing warranty. Warranty will not be considered on any altered, modified, or misused part and failures due to lack of maintenance or accidents. Warranty claims by the user must be made to the dealer from which the product was purchased, unless otherwise authorized by TruckCraft. This warranty does not cover the shipping costs of defective parts to or from the dealer. No claims for labor shall be considered unless preauthorized by TruckCraft. No dealer has authority to make any representation or promise on behalf of TruckCraft, or to alter or modify the terms or limitations of this warranty.

**TruckCraft Corporation**

5751 Molly Pitcher Hwy. S., Chambersburg, PA 17201

Printed in U.S.A.  
© 2010 TruckCraft Corp.