



Owner's Manual

TC-300 & 310

COMBINATION BODIES



<p>Craft Corporation 5751 Molly Pitcher Hwy South Chambersburg, PA 17201</p>	 TC-300/310 Service Dumper	<p>Tel. 800 / 755-3867 Fax. 717 / 375-2975 E-Mail: sales@truckcraft.com Web: www.truckcraft.com</p>
--	---	---

Table Of Contents

	Page #
Warranty	3
Warranty Registration	4
Operator Safety Warnings	5
Operator Instructions	9
Installation Instructions	
Procedures	10
Paint Specifications	16
Features and Dimensions	
Specifications	19
Key Dimensions	20
Components	22
Parts Lists	23
Optional Components	
Roll-up Tarp Assembly (300/310)	27
Coal Chute	28
<i>D-Icer</i> Tailgate Replacement Salt Spreader	29
<i>Aluma-Boards</i> Aluminum Side Boards	30

TruckCraft Corporation
5751 Molly Pitcher Hwy South
Chambersburg, PA 17201



TC-300/310 Service Dumper

Tel. 800 / 755-3867
Fax. 717 / 375-2975
E-Mail: sales@truckcraft.com
Web: www.truckcraft.com

TruckCraft Warranty Certificate



TRUCKCRAFT CORPORATION WARRANTS EACH TC-300 & TC-310 COMBINATION DUMP BODY TO BE FREE FROM DEFECTS IN MATERIAL AND WORKMANSHIP FOR A PERIOD OF ONE YEAR FROM THE DATE OF INITIAL SALE, LEASE, RENTAL, OR OTHER DISPOSITION OF SUCH PRODUCT, AND AGREES ONLY TO REPAIR OR REPLACE AT ITS OWN EXPENSE F.O.B. THE PLACE OR PLACES OF MANUFACTURE, AT MANUFACTURER'S OPTION, ANY PART OR PARTS OF THE PRODUCT FOUND TO BE DEFECTIVE IN MATERIAL OR WORKMANSHIP, PROVIDED MANUFACTURER IS NOTIFIED OF SUCH DEFECT OR DEFECTS WITHIN THE ONE YEAR WARRANTY PERIOD AND GIVEN A REASONABLE TIME TO CORRECT THE DEFECT. DEFECTS FOLLOWING OPERATION BEYOND RATED CAPACITY OR THE IMPROPER USE OR APPLICATION OF ANY PRODUCTS SHALL NOT BE CONSIDERED DEFECTS WITHIN THE SCOPE OF THE FOREGOING WARRANTY. NO CLAIMS FOR LABOR SHALL BE CONSIDERED UNLESS AUTHORIZED BY THE MANUFACTURER. THE SIDE SERVICE COMPARTMENTS OF THE COMBINATION DUMP ARE NOT MANUFACTURED BY TRUCKCRAFT CORPORATION AND HAVE A SEPARATE WARRANTY PROVIDED BY THE MANUFACTURER.

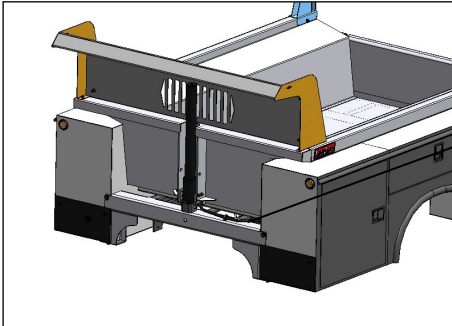
TruckCraft Corporation 5751 Molly Pitcher Hwy South Chambersburg, PA 17201	 TC-300/310 Service Dumper	Tel. 800 / 755-3867 Fax. 717 / 375-2975 E-Mail: sales@truckcraft.com Web: www.truckcraft.com
--	---	---

TruckCraft Warranty Registration

Thank you for purchasing a TruckCraft Service Dumper. We appreciate your business and trust that your Dumper will give you many years of outstanding service. In order to provide you with the superior support that you deserve, we request that you register your warranty with us.

To register your warranty, please complete this form and mail or fax it to TruckCraft within 30 days of purchase.

Serial # _____ (Located on top of the frame on the Driver's Side)



Serial
Number
Location

Company Name _____
Street Address _____
Address 2 _____
City _____
State _____ Zip _____

Your Name _____
Phone _____
E-mail _____

Date Purchased _____
Dealer Name _____
Intended Use _____



Operator Safety Warnings

NEVER exceed the manufacturer's gross vehicle weight rating.

NEVER exceed the rating of the truck axles and tires.

ALWAYS load the bed keeping as much of the load as possible centered over or forward of the rear axle.

NEVER exceed the structural capacity (12,000 lbs.) of the Dumper. Structural capacity means the maximum weight the Dumper will carry and dump with some margin of safety. This does not mean that your truck can carry 12,000 lbs. See GVWR of truck.

ALWAYS operate the Dumper on level ground.

ALWAYS open the tailgate prior to raising the Dumper when it is loaded.

DO NOT place anything on top of the cabinets. Damage will occur when the Dumper is lowered if anything is left on top of the cabinets.

ALWAYS store the remote control in a location that assures that no object can come in contact with the raise button unintentionally.

ALWAYS keep all personnel clear when raising and lowering the Dumper.

BEFORE raising the Dumper, check for adequate overhead clearance. Be alert for overhead electrical wires.

DO NOT tilt the Dumper when loaded until the bottom of the tailgate has been released. The top of the tailgate **should not** be opened with a load against it.

ALWAYS use the service safety prop when doing service or repairs on the Dumper

ALWAYS empty the bed and use the safety prop prior to doing any service or repair work on the Dumper.

ALWAYS ensure that the red warning light is off, indicating that the bed is all the way down before operating your vehicle.

TruckCraft Corporation
5751 Molly Pitcher Hwy South
Chambersburg, PA 17201



TC-300/310 Service Dumper

Tel. 800 / 755-3867
Fax. 717 / 375-2975
E-Mail: sales@truckcraft.com
Web: www.truckcraft.com

Operator Safety Warnings cont'd

DO NOT attempt to repair this Dump Body yourself unless you have experience working on dump beds and are familiar with the hazards involved. For all purposes of safety, please take your equipment to the dealer from which it was purchased for all repairs and service.



TruckCraft Corporation
5751 Molly Pitcher Hwy South
Chambersburg, PA 17201



TC-300/310 Service Dumper

Tel. 800 / 755-3867
Fax. 717 / 375-2975
E-Mail: sales@truckcraft.com
Web: www.truckcraft.com

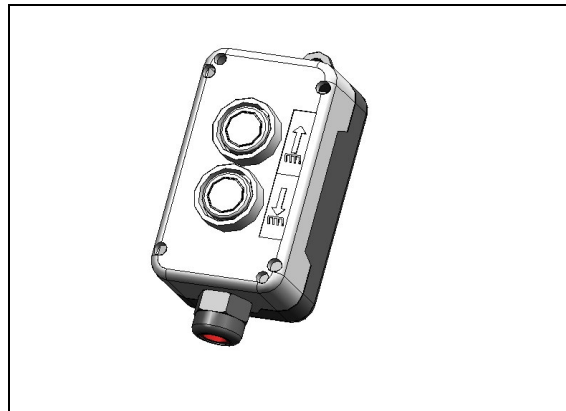
Operator Instructions

If you have any problems with your Service Dumper please contact your authorized dealer immediately.

Dealer Contact Information _____

This Dump Bed, like any product, will perform and last depending on how it is used and cared for. Following are some operating and maintenance guidelines for using the Dumper:

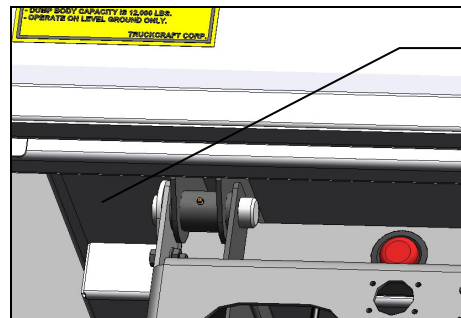
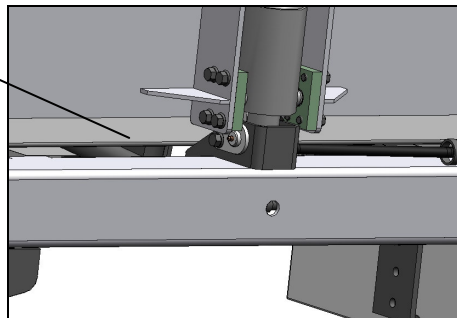
Use the remote control to raise and lower the bed.



Lubricate the following locations every 3 to 6 months depending on use:

- Lower tilt cylinder pivot (1 place)
- Rear dump body pivots (2 places)

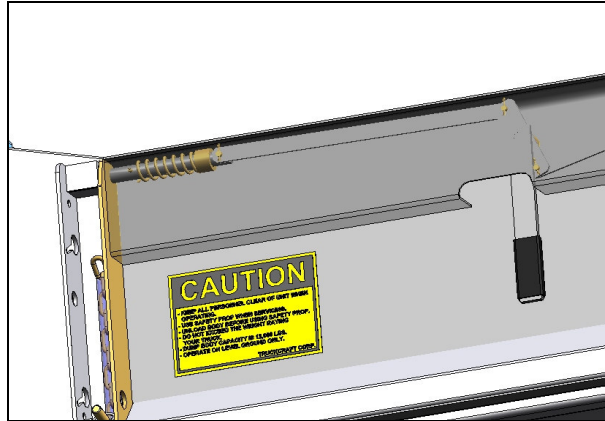
Cylinder
Grease
Fitting



Body Pivot
Grease
Fitting

Operator Instructions cont'd

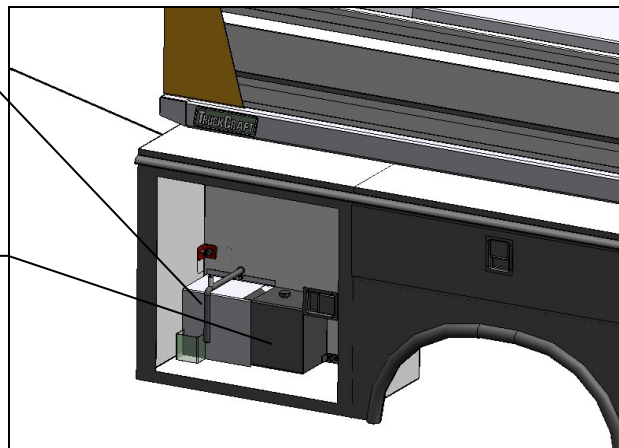
Lubricate the tailgate pins periodically with WD-40.



Check the hydraulic fluid level and bleed the cylinder every 6 months. If additional fluid is required, add Dexron Automatic Transmission Fluid. Fluid should not need to be changed unless it becomes contaminated from an outside source. To **check the fluid level**, raise the dump bed and position the safety prop in a vertical position. Remove the reservoir breather, and using a clean stick, measure the fluid level. Fill the fluid level depth to 7" when dumper is positioned on vertically positioned safety prop. Be sure stick is touching bottom of tank, not pick-up tube. Leave the breather off and lower the bed to the down position. The bed can now be raised and the breather reinstalled. The reason for leaving the breather off during the first cycle after filling, is to guard against pressurizing the reservoir in the event that it has been overfilled. With the breather off, the fluid will overflow out of the tank. With the breather on, the excess oil may not be able to overflow fast enough and the back pressure may dislodge the reservoir from the pump unit.

Safety Prop
Handle

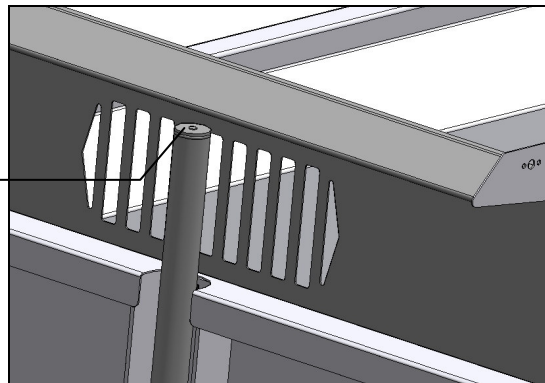
Hydraulic
Reservoir



Operator Instructions cont'd

Bleed the cylinder immediately. After filling hydraulic reservoir to proper level, locate and remove plug on top of hydraulic cylinder. Place a clean rag over the plug opening and jog the "RAISE" button until a small amount of fluid comes out the opening. Replace the plug and re-check the reservoir fluid level as described in 9 above. If fluid is again low, repeat all steps in item 10.

Cylinder
Bleed Plug



Do not attempt to repair this dumper yourself unless you have experience working on dump beds and are familiar with the hazards involved. For all purposes of safety, please take your dumper to the dealer from which it was purchased for all repairs and service.



Installation Procedures

1. **Cut off the truck frame** if necessary. 109" (97" for TC-310) from the back of the cab to the end of the frame is max.
2. **Set the body** on the truck frame.
3. **Determine correct spacing above truck frame.** Refer to drawing **D1-01130** for dimension from bottom of subframe to bottom of wheelhousing. Refer to Chassis Manufacturer Incomplete Vehicle Manual to determine the height of the fuel filler housing above the chassis frame. The subframe spacers provided may be higher than required on some cab chassis.
4. **Locate the front and mid-ship mounting plates to best advantage based on the cab chassis frame.** The front mounting plates must be located as near the front as practical and the mid ship mounting plates should be located over the rear axle (see drawing **D1-01130**). After proper location, weld the mounting plates to the subframe and drill through the mounting plates and the truck frame for mounting to the truck frame. Guard all fuel lines, brake lines, electrical wires and fuel tanks when drilling.
5. **Position drivers side storage compartment** and complete the fuel filler installation per the Cab Chassis Incomplete Vehicle Document.
6. **Remove the side storage compartment** and hardware for painting.
7. **Paint the unit** being careful to always use the safety prop.

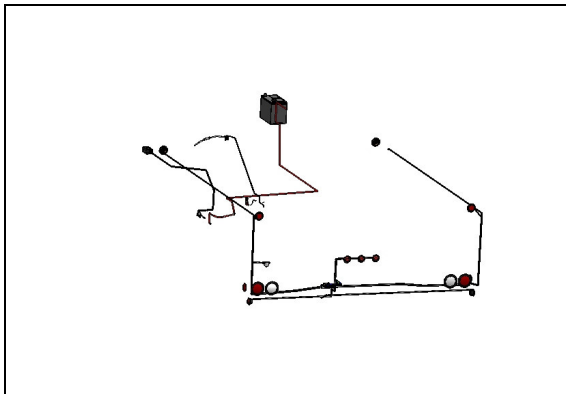
Dump Body:

- This dump body was fabricated using A60 Galvanneal steel.
- After welding, the body was washed with a high-pressure phosphatizing solution and dried.
- All welds and raw edges were coated with Sherwin-Williams DTM Epoxy Primer #E2A933 (see product data sheet attached).
- Apply a primer to the entire dump body that is compatible with the DTM primer and the topcoat that you intend to apply.
- Apply topcoat

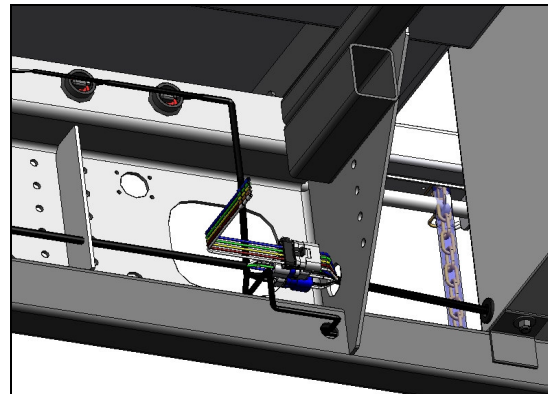
Sidecompartments: (Manufactured by Danzer Morrison)

- Sand lightly with random action sander and 220 grit abrasive. Just remove the glossy surface, don't remove the primer to bare metal. The primer is applied to a thickness of 1.2 mils. If this primer is removed below a thickness of 1.0 mil, it will be necessary to apply a coating of rust-inhibiting primer to restore proper rust protection.
- If surface repairs are made which require sanding to bare metal, use an appropriate metal etching primer to ensure proper paint adhesion.
- It is necessary to use a primer/surfacer between the electrocoat primer and the base color coat when applying a base coat/clear coat finish.

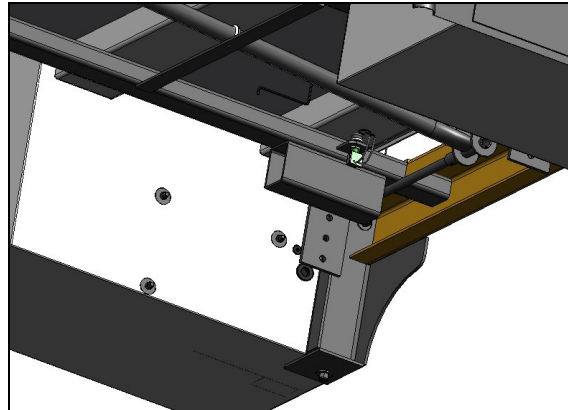
8. **Run wiring** from dump switch to indicator light in cab. See wiring diagram below for proper wiring.



Wiring Diagram



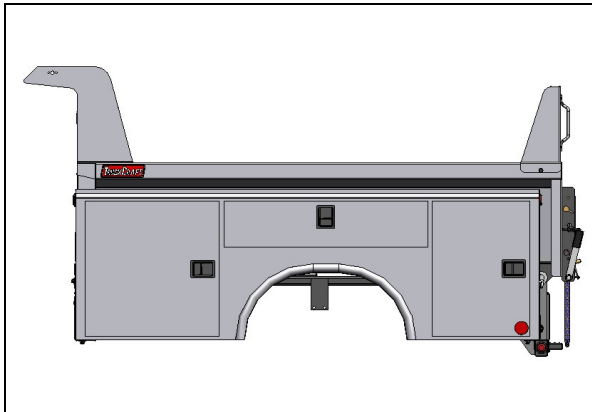
Wiring Harness Connectors



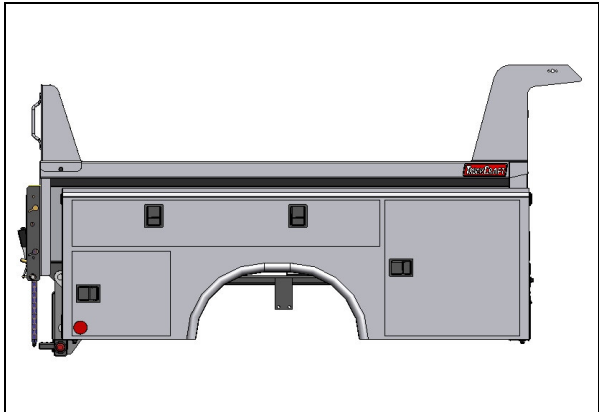
Location for Switch for Bed-Raised Indicator Light

9. **Reassemble** after painting. Install the lights and wiring harnesses provided. See wiring harness picture above.

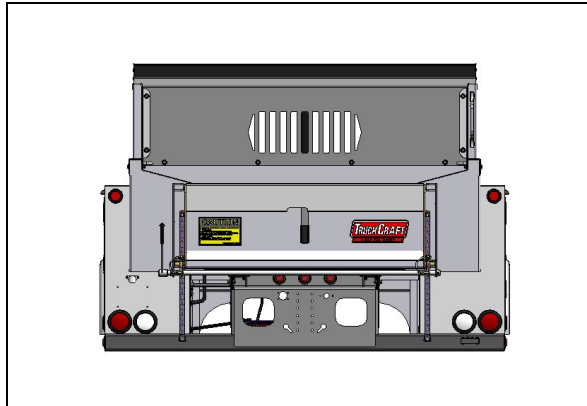
10. **Add** the black vinyl stone guards to the front of each of the side storage compartments. Install the safety decals and TruckCraft logos as shown on the pictures following.



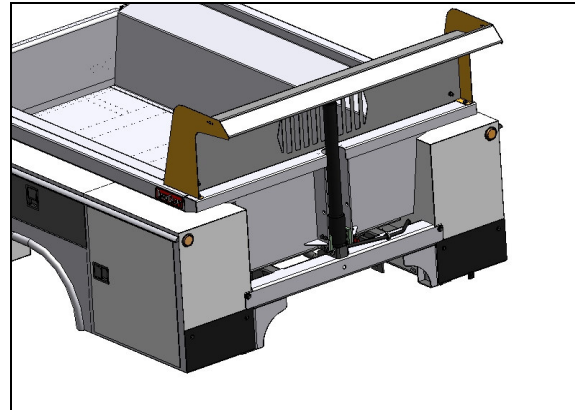
Decal Location – Driver's Side



Decal Location – Curb Side

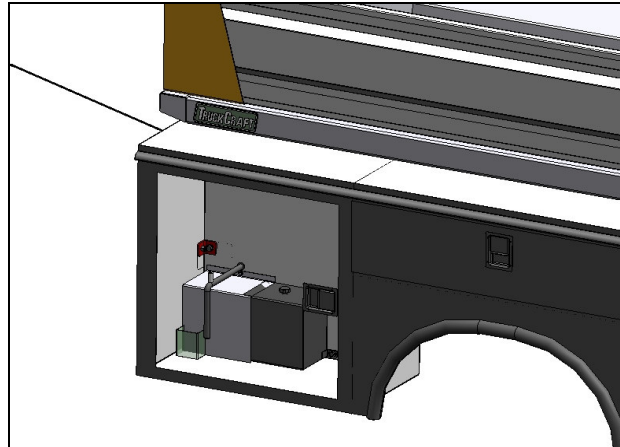


Decal Location – Rear

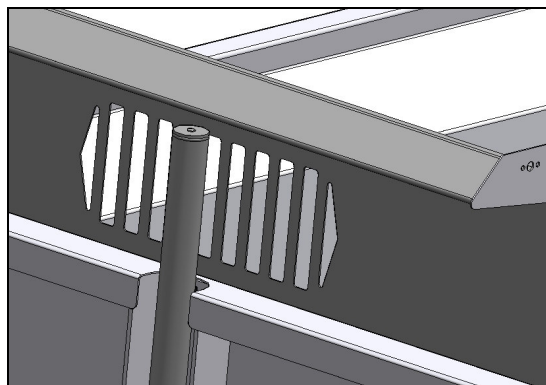


Stone Guard Locations

11. **Connect hydraulic hose** to the power unit.
12. **Route the pump power cable** to the battery positive terminal in such a way as to **avoid sharp edges, and maintain a minimum distance of 8" from any portion of the exhaust system**. By routing the power cable along side the truck frame, you will give the cable maximum protection. Do not cross under or over the truck frame where the cable could get caught, rubbed, or pinched.
13. **Check Hydraulic Fluid Level**. The hydraulic pump reservoir has been filled at the factory. If more fluid is necessary, use only Dexron Automatic Transmission Fluid. **CAUTION:** Don't overfill. Adding too much fluid will cause the reservoir to overflow when the bed is lowered. The best method of refilling the reservoir is to place the dumper on the safety prop, with prop being as straight up and down as possible under the dumper. Insert a clean ruler. Fill the reservoir until the depth of fluid is 7" below top of tank. Be sure the ruler touches the bottom of the reservoir, not the pick-up tube. If you have no way to measure 7" an alternative method of filling is to add 2-3 oz. of fluid at a time and raise the bed. Repeat this procedure until the pump does not change sound (from pumping air) at the end of the stroke. The hydraulic cylinder will require bleeding of all air each time you replenish fluid.



- Bleed air** from hydraulic cylinder. After filling the hydraulic reservoir to the proper level, locate and remove the plug on top of the hydraulic cylinder (requires a 1/4" allen wrench). Place a clean cloth or absorbent towel over the plug opening and jog the "RAISE" button until a small amount of fluid comes out the opening. Replace the plug and re-check the reservoir fluid level as described in the previous section. If fluid is again low, repeat this procedure.



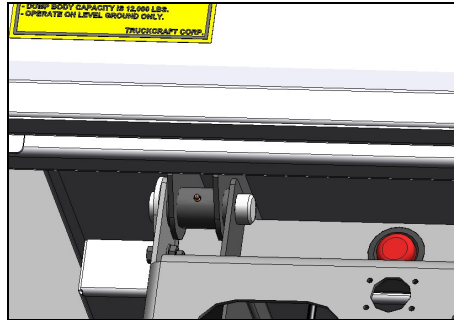
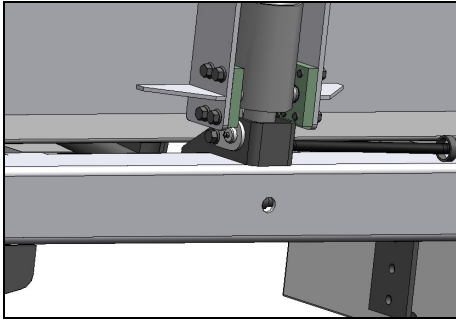
- Tighten all fasteners** and lubricate the unit at the following locations: Rear Dump Body Pivots (2 places), Lower Tilt Cylinder Pivot (1 place)

TruckCraft Corporation
5751 Molly Pitcher Hwy South
Chambersburg, PA 17201



TC-300/310 Service Dumper

Tel. 800 / 755-3867
Fax. 717 / 375-2975
E-Mail: sales@truckcraft.com
Web: www.truckcraft.com



16. To install the remote in the truck cab (if desired). Make note of the wire colors and the connection locations prior to disconnecting the remote control from the power unit. After disconnecting the remote control, route the end of the cable through the floor of the pickup cab behind the drivers seat (preferably through a rubber plug in the floor). The cable should then be routed up the back of the cab and over the top front edge of the pickup box and down to the power unit where it is reconnected. Use a stay strap to secure the cable to the front of the Dumper bottom frame to assure clearance when the Dumper is raised and lowered.

17. Installation of Optional Products. A separate section of the manual is included for optional products. The installations instructions are included in the manual section for each of the optional products.

Have questions? Call Toll Free 1-800-755 DUMP (3867)

TruckCraft Corporation
5751 Molly Pitcher Hwy South
Chambersburg, PA 17201



TC-300/310 Service Dumper

Tel. 800 / 755-3867
Fax. 717 / 375-2975
E-Mail: sales@truckcraft.com
Web: www.truckcraft.com

Paint Specifications



DTM Primers
3.5 VOC Epoxy Primers
Black **E2B931**
Off-White **E2W932**
Gray **E2A933**

PRODUCT DESCRIPTION:

3.5 VOC Epoxy Primers, E2B931/E2W932/E2A933, are low VOC, two-component primers offering excellent direct-to-metal adhesion and corrosion resistance over properly cleaned steel and aluminum substrates without the use of lead or chromates. 3.5 VOC Epoxy Primers E2B931/E2W932/E2A933 offer flexibility greater than standard epoxy primers. E2B931/E2W932/E2A933 require no induction time and are designed for truck manufacturers, fleets and automotive refinishers where extended service is important. These primers may be topcoated as soon as 30 minutes after priming.

TECHNICAL DATA:

	E2A933	E2W932	E2B931		
• Color	Gray	Off-White	Black	• Flash Point (@ 4:1:1)	38°F Seta
• Wt/gallon (mixed)	10.41 lbs/gal	10.43 lbs/gal	10.28 lbs/gal	• Viscosity (@ 4:1:1), #2 Zahn cup	14-16 sec.
• Mixing ratio by volume				• Performance after one week air dry (over Aluminum & Steel using GENESIS®)	
Primer : VS100 : V6V943	4 : 1 : 1	4 : 1 : 1	4 : 1 : 1	- Humidity Resistance - 100 hrs	Pass
• Volume Solids (@ 4:1:1)	40.88%	40.97%	40.90%	- Impact Resistance (direct @ 80 in-lbs)	Pass
• Coverage @ 1 mil (dry)	656 sq.ft./gal	657 sq. ft/gal	656 sq.ft/gal	- Flexibility (1/8" conical mandrel)	Pass
• Pot life @ 70-80°F	4 hrs	4 hrs	3 hrs	- Salt Spray Resistance - 250 hrs	Pass
• VOC less exempt @ 4:1:1	3.50 lbs/gal	3.50 lbs/gal	3.50 lbs/gal.	- Gloss Holdout (@ 15 - 30 mins re-coat)	Excellent
• HAPS Status	Compliant, Non-Photochemically Reactive			• Recommended dry film thickness (2 coats)	1.5-2.0 mil

SURFACE PREPARATION:

Substrates*: Steel, Hot-dipped Galvaneal**, Aluminum, Stainless Steel (304 grade), SLI269 (SMC), E67AR1908 (IMC), ED5050 (E-Coated Steel), Body Filler***

*Note: With the inconsistencies of substrates, consult your local SHERWIN-WILLIAMS Representative for system recommendations and substrate testing.

**Note: Recommended use of Hot-dipped Galvaneal only, using an Electro-deposited Galvaneal will result in substandard system performance.

***Note: With several different types of Body Fillers available, consult your local SHERWIN-WILLIAMS Representative for system recommendations.

1. Solvent clean with SHER-WILL-CLEAN® Solvent Cleaner R7K156 or AQUA-MATE™ Low VOC Surface Cleaner W4K157 and wipe dry with a clean, dry cloth.
2. Mechanically abrade all bare metal. For hot-rolled steel, a media blast is required to remove any surface impurities.
3. Solvent clean with SHER-WILL-CLEAN® Solvent Cleaner R7K156 or AQUA-MATE™ Low VOC Surface Cleaner W4K157 and wipe dry with a clean, dry cloth. For hot-rolled steel, proceed to primer application.
4. For IMC and SMC bare substrates clean with SC159 Plastic cleaner / Anti-static solvent based cleaner to remove all mold release or power wash agents. Follow with a deionized water rinse.

(For the above products refer to the appropriate product label or data page for complete information.)

Prepainted Substrates:

1. Wash surfaces with mild detergent in hot water. Rinse well and wipe dry with a clean, dry cloth.
2. Solvent clean surfaces with UltraClean® Surface Cleaner R7K158, SHER-WILL-CLEAN® Solvent Cleaner R7K156 or AQUA-MATE™ Low VOC Surface Cleaner W4K157. Wipe dry with a clean, dry cloth.
3. Grind repair area to remove paint and all rust as needed. Fill as needed using appropriate body filler. Allow body filler to tack up and shape as needed.



Paint Specifications (cont'd)

- Sand repair area and featheredge using 80, 180, 280, and finish with 320 grit treated sandpaper on a random orbital sander. Solvent clean to remove sanding residue before recoating.

MIXING:

- Shake 3.5 VOC Epoxy Primer E2B931/E2W932/E2A933 thoroughly before mixing. Use care when opening after shaking, as slight solvent pressure may build. A 15 minute wait is recommended.
- Mix by volume 4 parts 3.5 Epoxy Primer E2B931/E2W932/E2A933 to 1 part VS100 Reducer to 1 part 3.5 Epoxy Activator V6V943. *Note: VS100 maybe replaced with R7K7210 or ES20 for warm and hot conditions respectively where improved leveling and overspray acceptance are needed.*
- Stir thoroughly and strain.

APPLICATION:

- For proper results use the following equipment recommendations. Check equipment by applying E2B931/E2W932/E2A933 Epoxy Primer to a test panel before using.
- Apply 2 wet coats of E2B931/E2W932/E2A933. Epoxy Primer to achieve the recommended dry film thickness of 1.5-2.0 mils.

DRYING SCHEDULE:

Dry times are based on the recommended dry film thickness of 1.5-2.0 mils.

- Air-dry times @ 75°F and 25% R.H.

Hand-lick	5 minutes
To Recoat	30 minutes (see below)
Tack-Free	1 hour
Nib Sandable	1 hour
Sandable	1.5 hours (Slightly longer for Black)
Tape Free	1.5 hours (Slightly longer for Black)
- Force dry times (to tape free)

45 minutes at 160°F
30 minutes at 180°F

RECOMMENDED GUNS:

Spray Gun Type & Model	Manufacturer	Fluid Tip/ Needle	Air Cap	Atomizing Air	Fluid Delivery	Gun Distance
HVLP (M21)	Kremlin	#209 (.035)	LP3	10 psi at cap	10-12 oz/min	4-6 inches
HVLP (GT1)	DeVilbiss	1.4 mm	#100	10 psi at cap	10-12 oz/min	4-6 inches
HVLP (K-NR 95)	SATAjet	NR-95 (.0895)	NR-95 (.08)	10 psi at cap	10-12 oz/min	4-6 inches
Pressure Feed (JGA 502)	DeVilbiss	FF or FX	797/777	50-55 at gun	10-12 oz/min	10-12 inches
* Air-Assisted Airless (MX)	Kremlin	06-116 (.011)	BX-16	20 psi at gauge	600 psi at gauge	8-12 inches
* Air-Assisted Airless (MX)	Kremlin	09-136 (.013)	BX-16	20 psi at gauge	600 psi at gauge	8-12 inches

* See Spray Gun manufacturer for specific set up recommendations and constraints.

RECOATING:

- E2B931/E2W932/E2A933 3.5 VOC Epoxy Primers may be recoated up to 3 days after spraying without scuffing for all topcoats except Ultra 7000®, which may be recoated up to 2 days without scuffing. When 3 days have passed, scuff sand with 320 grit or finer sandpaper to insure proper adhesion.
- Recommended topcoats:

DIMENSION™ 3.5 Urethane	SUNFIRE® Acrylic Urethane
ULTRA ONE-STAGE TURBO®	SUNFIRE® Low VOC Acrylic Urethane
ULTRA 7000® Basecoat/Clearcoat	SUNFIRE® Basecoat/Clearcoat
ACRYLYD® 5.0*	GENESIS® 2.8/3.5 Acrylic Urethane
ACRYLYD® H.S.**	GENESIS® Basecoat/Clearcoat

* Topcoat within 8 hours when using ACRYLYD/V6V247 over E2A933 series primers.

** Topcoat within 24 hours when using ACRYLYD HS over E2A933 series primers



Paint Specifications (cont'd)

PRODUCT AT-A-GLANCE

PRODUCT	3.5 VOC Epoxy Primers	E2B931	Black
		E2W932	Off-White
		E2A933	Gray

USE

- Direct to properly cleaned metal surfaces
- Ideal for harsh environments where corrosion protection is important
- Fast dry

SUITABLE SUBSTRATES*

- Steel/Stainless Steel
- Aluminum
- SLI269 (SMC)
- Body Filler
- Hot-dipped Galvaneal
- E67AR1908 (IMC)
- ED5050 (E-coated Steel)

* See previous section on surface preparation for details.

SURFACE PREPARATION

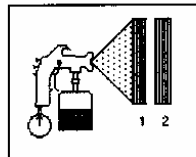
- Wash surfaces with a mild detergent in hot water. Rinse well and wipe dry with clean cloth.
- Solvent clean with the appropriate solvent cleaner and wipe dry with a clean cloth.
- Grind repair area to remove paint and all rust as needed.
- Apply body filler to clean bare metal as needed.
- Sand all areas to be refinished and featheredge all broken film areas.

MIXING

1. Stir or shake 3.5 VOC Epoxy Primer E2B931/E2W932/E2A933 thoroughly before mixing. Use care when opening after shaking, as slight solvent pressure may build. A 15-minute wait is recommended.
2. Mix by volume 4 parts 3.5 Epoxy Primer E2B931/E2W932/E2A933 to 1 parts VS100 Reducer to 1 part 3.5 Epoxy Activator V6V943. Note: VS100 maybe replaced with R7K7210 or ES20 for warm and hot conditions respectively where improved leveling and overspray acceptance are needed.
3. Stir thoroughly and strain.

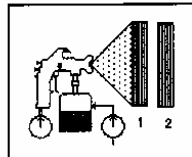
APPLICATION

Siphon Feed
Apply 2 coats.
Allow each coat to become hand slick.



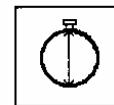
50 - 55 psi HVLP: 8-10 psi

Pressure Feed
Apply 2 coats.
Allow each coat to become hand slick.



50-55 psi pot pressure: 8-10 psi

Time to
Recoat
30 minutes



RECOAT

SUNFIRE® Acrylic Urethane
SUNFIRE® Low VOC Acrylic Urethane
SUNFIRE® Basecoat/Clearcoat
GENESIS® 2.8/3.5 Acrylic Urethane
GENESIS® Basecoat/Clearcoat

DIMENSION™ 3.5 Urethane
ULTRA 7000® Basecoat/Clearcoat
ACRYLYD® HS
ACRYLYD® 5.0
ULTRA ONE-STAGE TURBO®

NOTES

- Scuff sand with 320 or finer sandpaper after 3 days of dry time before topcoating.
- For optimum corrosion resistance, 1.5-2.0 mils of primer (dry) is recommended.
- Topcoat within 8 hours when using ACRYLYD/V6V247 over E2A933 series primers.
- Topcoat within 24 hours when using ACRYLYD HS over E2A933 series primers

PERSONAL PROTECTION

- Read all label directions before use.
- Refer to MSDS for specific information.
- Wear a NIOSH approved organic vapor respirator when mixing and applying.
- Wear a NIOSH approved dust particulate mask when sanding.
- Wear safety glasses, coveralls, and rubber gloves when using product.

TruckCraft Corporation 5751 Molly Pitcher Hwy South Chambersburg, PA 17201	 TC-300/310 Service Dumper	Tel. 800 / 755-3867 Fax. 717 / 375-2975 E-Mail: sales@truckcraft.com Web: www.truckcraft.com
--	---	---

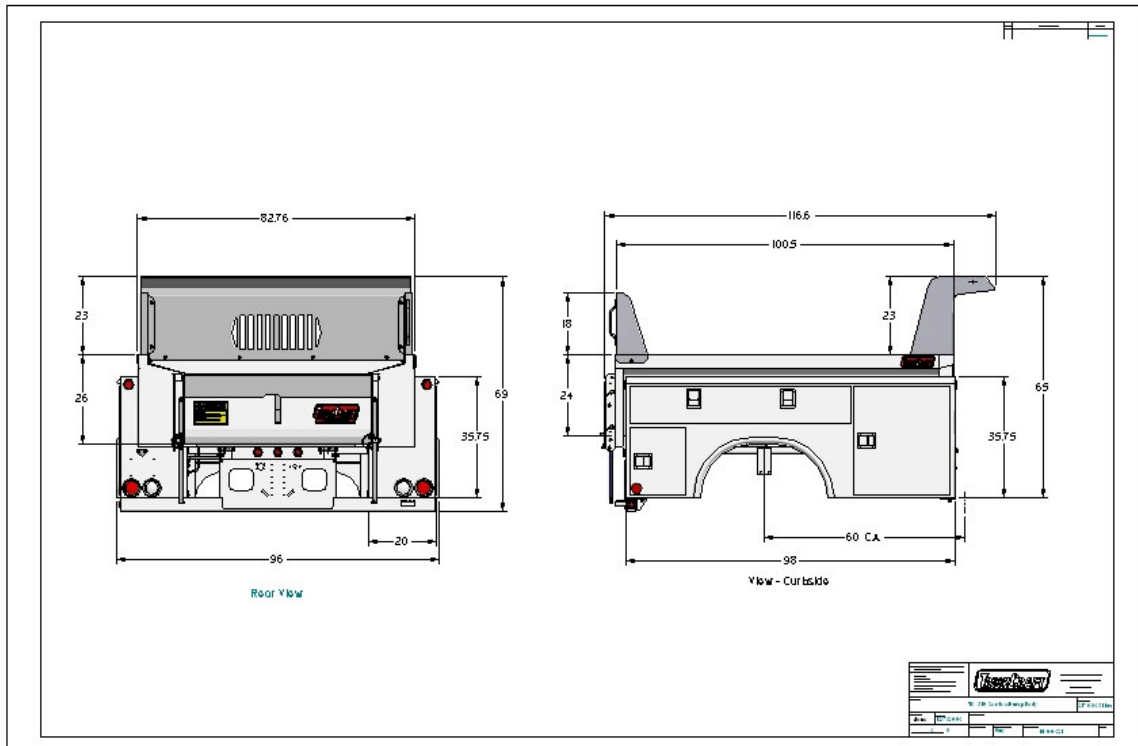
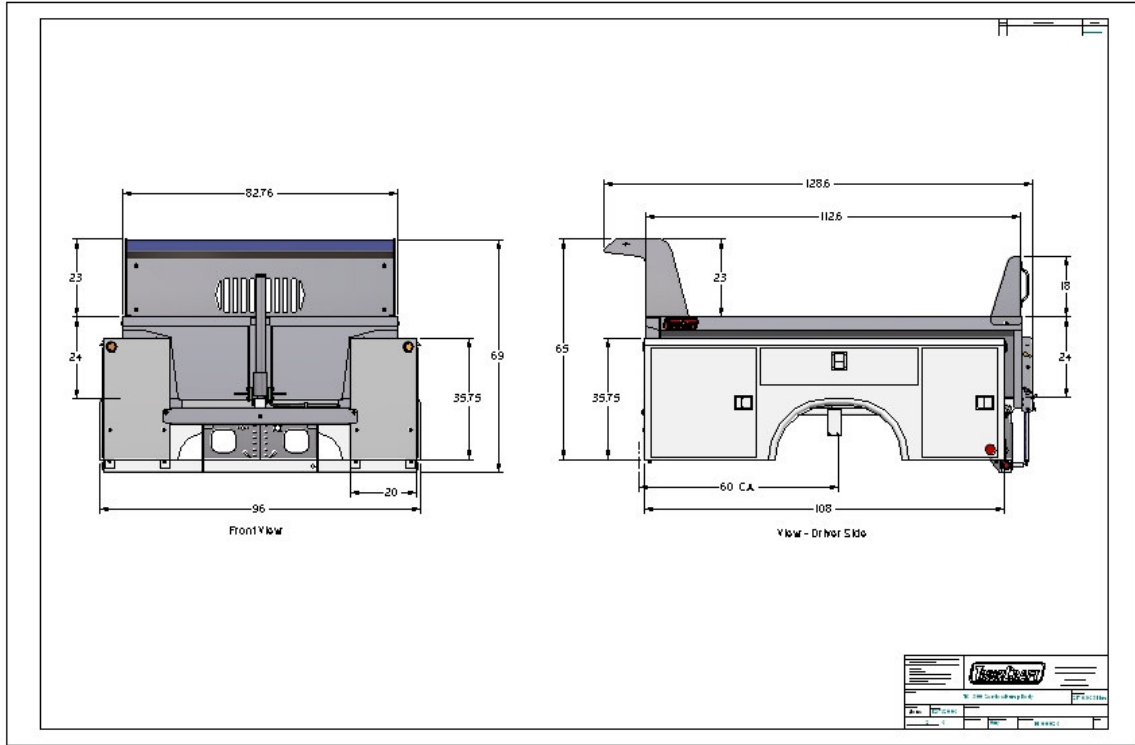
TC-300 / 310 Product Specifications

Dump Body	TC-300 (9')	TC-310 (8')
Capacity*	12,000 lb.	12,000 lb.
Volume*	3.00 cu. yd.	2.75 cu. yd.
Volume with Side Boards*	5.25 cu. yd.	5.00 cu. yd.
Cargo Area	48.5" x 108.5"	48.5" x 96.5"
Floor	One piece	One piece
Steel	A60 GALV.	A60 GALV.
Dump Angle	49 degrees	49 degrees
Hoist	3 Stage	3 Stage
Storage Compartments		
Volume	64 cu. ft.	57 cu. Ft.
Size (Nominal)	9' x 20" x 36"	8' x 20" x 36"

*NOTE: Your truck, dumper and payload should not exceed the G.V.W. rating or axle rating usually found on the inside of the vehicles driver's side door frame.

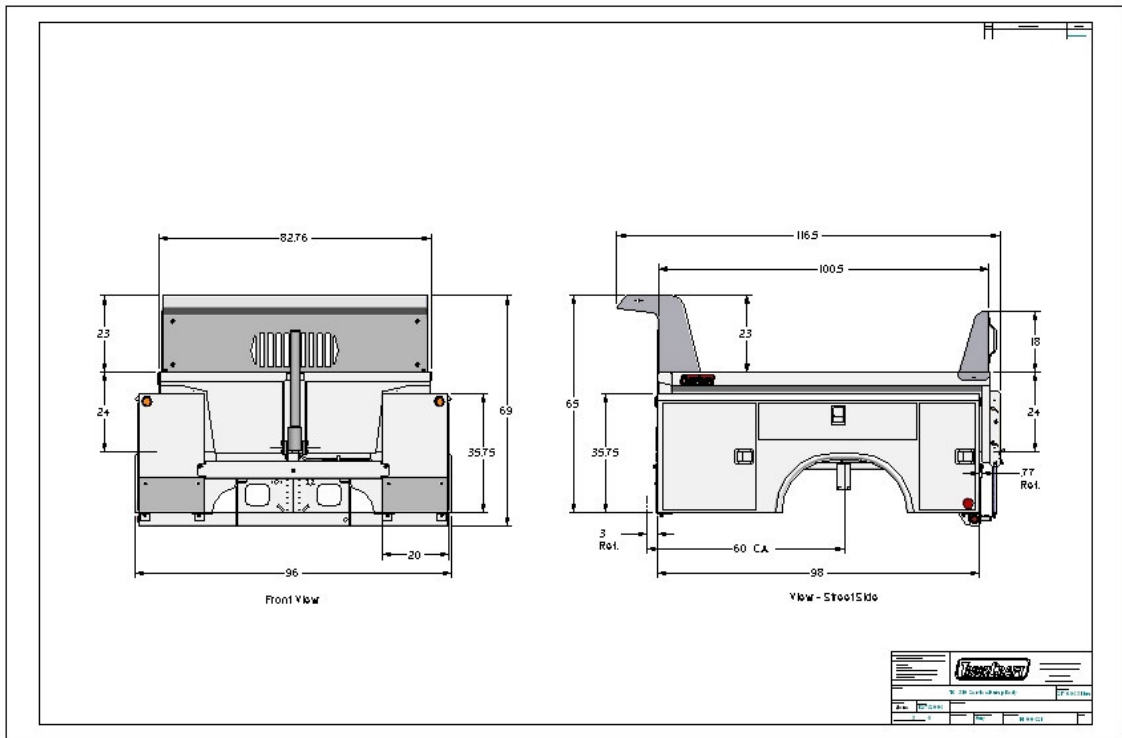
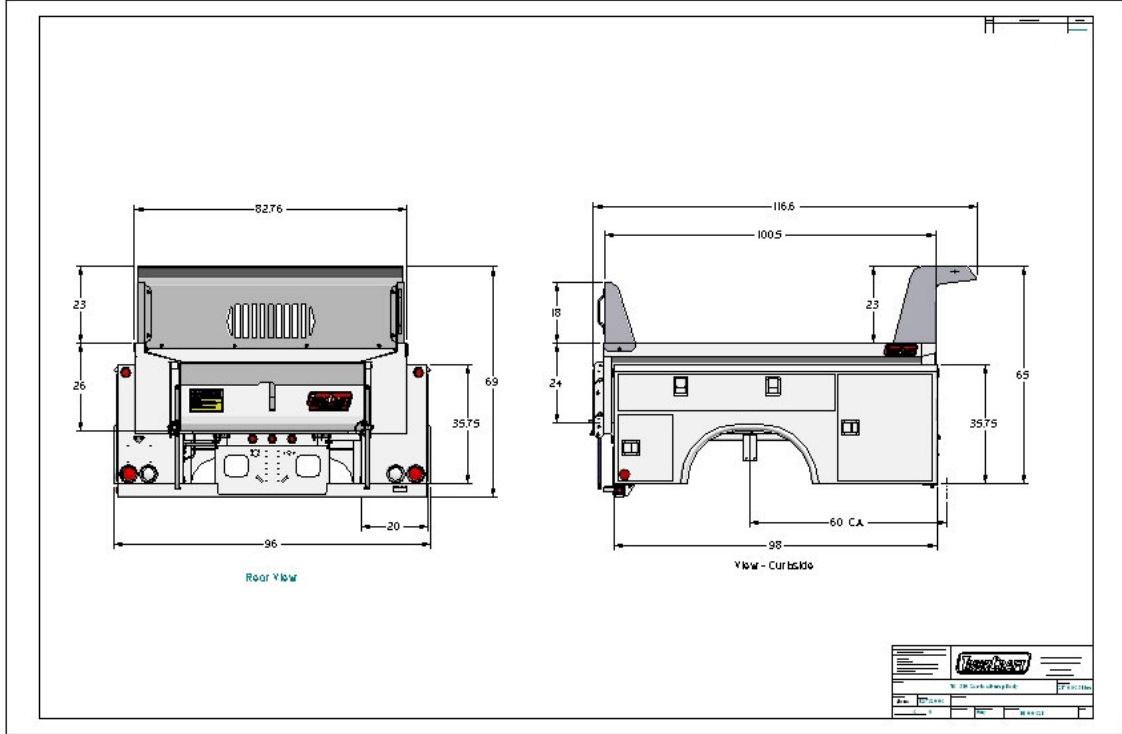


Key Product Dimensions – TC-300





Key Product Dimensions – TC-310



TruckCraft Corporation
5751 Molly Pitcher Hwy South
Chambersburg, PA 17201



TC-300/310 Service Dumper

Tel. 800 / 755-3867
Fax. 717 / 375-2975
E-Mail: sales@truckcraft.com
Web: www.truckcraft.com

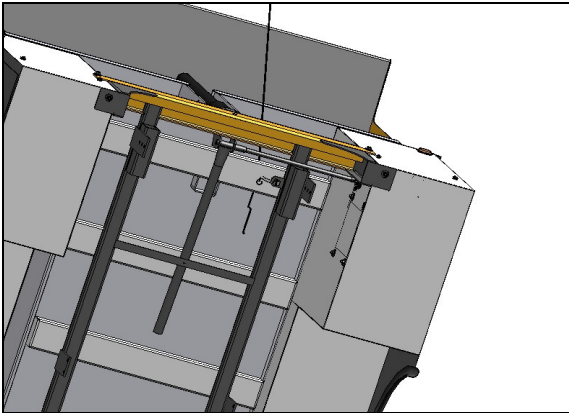
Major Product Components



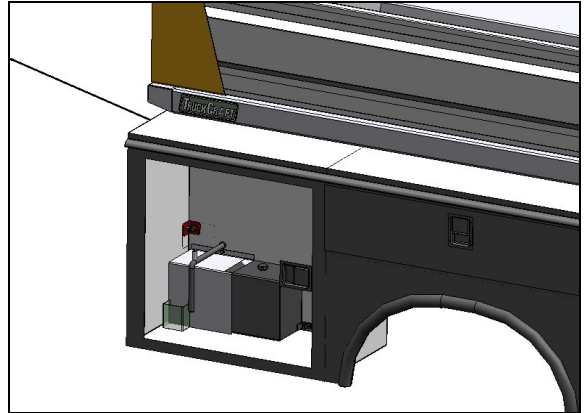
Dump Body Showing Lift Cylinder



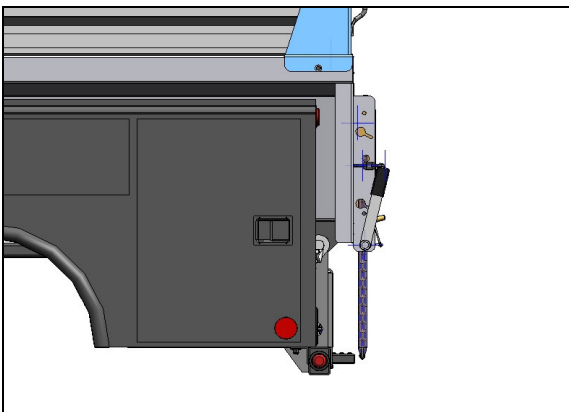
Side Compartments



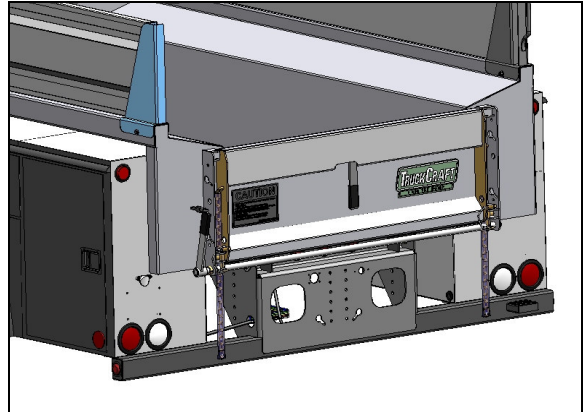
Location of Safety Prop in Sub-Frame



Location of Safety Prop Handle in the Side Compartment (Diver's Side)



Quick Latch – Side View



Quick Latch – Rear View



Parts List – TC-300

Bill of Materials – TC-300

Item Number	Part Number	Revision	Quantity	Project
1	D3-02590		1	Base Frame Weldment
2	C4-02597		1	Side Cmpts / Rdg / TC-300
3	A4-00546		1	Bearing
4	A4-02568		2	Reinforcing Angle
5	D3-02812	A	1	TC-300 Dump Body Weldment
6	B3-01325	B	1	Motor Guard Weldment
7	D3-02816	A	1	Cab Guard Weldment
8	B4-02815		2	Board Angle
9	C4-02597		1	Side Cmpts / Rdg / TC-300
10	B3-00058	C	1	Rear Corner Standard, RH
11	D3-02830	A	1	Tailgate Weldment
12	B3-01288		2	Hinge Pin Weldment
13	B3-01287		1	Cylinder Pin Weldment
14	B4-01062		2	Bearing Block
15	A4-00548		2	IGLIDE Bearing, 1.00"
16	P4-00375		3	Lube Fitting
17	B2-00135		2	Bent Pin Assembly
18	B4-00112	B	2	Splash Guard
19	A4-01286		1	Foam Handle Grip
20	A4-01262		6	Square Washer
21	A4-01292		1	Stick-on Cylinder bumper
22	B4-01812	B	1	Light Guard, LH
23	B4-03027		1	Light Guard, RH
24	A4-01298		2	Marker Light, 2.5" Red
25	A4-01300		4	Grommet, 2.5"
26	A4-01299		2	Marker Light, 2.5" Amber
27	A4-01313		2	Back-up Light, 4"
28	A4-01315		4	Grommet, 4"
29	A4-01314		2	Stop, Tail, Turn, 4"
30	A4-01303		5	Clearance Light Kit, Red 2"
31	A4-01316		1	License Plate Light
32	M4-01295		4	Rectangular Tube
33	B4-00400		2	Small LOGO Decal
34	B4-00402		1	Large LOGO Decal
35	B4-01305		1	Safety Decal, 12,000#
36	M4-03158		1	Sleeve, Web , Black
37	P4-00733		2	Xmas Tree Clip
38	P4-00569		3	Flat Washer
39	P4-01257		33	Hex Flange Bolt
40	P4-00482		15	Hex Flange Nut
41	P4-00378		7	Flat Washer
42	P4-02935		2	Hex Head Cap Screw
43	P4-00372		9	Nyl. Insert Lock Nut

TruckCraft Corporation 5751 Molly Pitcher Hwy South Chambersburg, PA 17201	 TC-300/310 Service Dumper	Tel. 800 / 755-3867 Fax. 717 / 375-2975 E-Mail: sales@truckcraft.com Web: www.truckcraft.com
--	---	---

44	P4-00590		10	Nyl. Insert Lock Nut
45	P4-00592		10	Flat Washer
46	P4-00570		8	Flat Washer
47	P4-00466		7	Hex Head Cap Screw
48	M4-02944	A	4	Double Sided Foam Tape
49	A4-01291		1	Prop Bumper Ring
50	A4-00612		1	Male Elbow
51	P4-00410		1	Pin , Slotted Spring, 3/16" x 1.00
52	A4-00092		1	Body Switch
53	P4-00886		2	Pan Head Machine Screw
54	A4-01296		1	Mounting Bracket
55	A4-01297		1	Light Decal
56	A4-00107		1	Warning Light
57	A4-01304		1	Fuse Holder
58	P4-01407		1	10 Amp Fuse (AGC)
59	A4-01306		2	Red Reflector
60	P4-00887		2	Nyl. Insert Lock Nut - #10-32
61	P4-00557		1	Hex Head Cap Screw
62	P4-02406		1	Flat Washer
63	P4-00371		1	Nyl. Insert Lock Nut
64	A4-01293		3	Grommet, Hose
65	A4-01294		2	Grommet, Battery Cable
66	C1-02973		1	Sideboard Set, TC-300
67	A4-01163	A	1	Pump
68	A4-01105		1	Reservoir, 10" X 7" X 10"
69	P4-00688		1	Pipe Nipple
70	A4-00675		1	Female Elbow
71	P4-00879		3	Flat Washer
72	B3-00026	C	1	Rear Corner Standard, LH
73	D2-00951		1	Telescopic Cylinder, TC-300
74	I6-01423		1	Owners Manual
75	I6-03043		1	Installation Instructions
76	D2-01589		1	Quick Latch
77	A4-02350		1	Connector / Female / 480
78	P4-03174 Connectors		1	WIRING HARNESS- Connectors for P4-03174
79	connector-2 wire female		1	Connector / Male / 480
81	A4-01123		1	Hydraulic Hose .38x50"
96	A4-00412		1	Remote Control Box & Cable
98	A4-00381		1	Battery Cable-16ft-3/8"Lugs
99	A4-00381Lug		1	Battery Cable- 3/8" Lug
100	A4-00092-Wiring		1	Body Switch wiring
101	A4-03175		1	Harness,TC-300-Pass Side
102	A4-03176		1	Harness,TC-300 Rear Bumper
105	A4-03174		1	Harness,TC-300-Driver Side
106	D3-03393		1	Cab Guard Weldment / TC-300 / for GM4500
107	P4-02308		20	WIRE CLIP, ADHESIVE BACKED



Parts List – TC-310

Bill of Materials – TC-310

Item Number	Part Number	Revision	Quantity	Project
1	D3-01193		1	Base Frame Weldment
2	C4-03563		1	Side Cmpts / Rdg / TC-310
3	A4-00546		1	Bearing
4	A4-02568		2	Reinforcing Angle
5	D3-02812	A	1	TC-310 Dump Body Weldment
6	B3-01325	B	1	Motor Guard Weldment
7	D3-02816	A	1	Cab Guard Weldment
8	B4-02815		2	Board Angle
9	C4-03563		1	Side Cmpts / Rdg / TC-310
10	B3-00058	C	1	Rear Corner Standard, RH
11	D3-02830	A	1	Tailgate Weldment
12	B3-01288		2	Hinge Pin Weldment
13	B3-01287		1	Cylinder Pin Weldment
14	B4-01062		2	Bearing Block
15	A4-00548		2	IGLIDE Bearing, 1.00"
16	P4-00375		3	Lube Fitting
17	B2-00135		2	Bent Pin Assembly
18	B4-00112	B	2	Splash Guard
19	A4-01286		1	Foam Handle Grip
20	A4-01262		6	Square Washer
21	A4-01292		1	Stick-on Cylinder bumper
22	B4-01812	B	1	Light Guard, LH
23	B4-03027		1	Light Guard, RH
24	A4-01298		2	Marker Light, 2.5" Red
25	A4-01300		4	Grommet, 2.5"
26	A4-01299		2	Marker Light, 2.5" Amber
27	A4-01313		2	Back-up Light, 4"
28	A4-01315		4	Grommet, 4"
29	A4-01314		2	Stop, Tail, Turn, 4"
30	A4-01303		5	Clearance Light Kit, Red 2"
31	A4-01316		1	License Plate Light
32	M4-01295		4	Rectangular Tube
33	B4-00400		2	Small LOGO Decal
34	B4-00402		1	Large LOGO Decal
35	B4-01305		1	Safety Decal, 12,000#
36	M4-03158		1	Sleeve, Web , Black
37	P4-00733		2	Xmas Tree Clip
38	P4-00569		3	Flat Washer
39	P4-01257		33	Hex Flange Bolt
40	P4-00482		15	Hex Flange Nut
41	P4-00378		7	Flat Washer
42	P4-02935		2	Hex Head Cap Screw
43	P4-00372		9	Nyl. Insert Lock Nut
44	P4-00590		10	Nyl. Insert Lock Nut

TruckCraft Corporation
5751 Molly Pitcher Hwy South
Chambersburg, PA 17201



TC-300/310 Service Dumper

Tel. 800 / 755-3867
Fax. 717 / 375-2975
E-Mail: sales@truckcraft.com
Web: www.truckcraft.com

45	P4-00592		10	Flat Washer
46	P4-00570		8	Flat Washer
47	P4-00466		7	Hex Head Cap Screw
48	M4-02944	A	4	Double Sided Foam Tape
49	A4-01291		1	Prop Bumper Ring
50	A4-00612		1	Male Elbow
51	P4-00410		1	Pin , Slotted Spring, 3/16" x 1.00
52	A4-00092		1	Body Switch
53	P4-00886		2	Pan Head Machine Screw
54	A4-01296		1	Mounting Bracket
55	A4-01297		1	Light Decal
56	A4-00107		1	Warning Light
57	A4-01304		1	Fuse Holder
58	P4-01407		1	10 Amp Fuse (AGC)
59	A4-01306		2	Red Reflector
60	P4-00887		2	Nyl. Insert Lock Nut - #10-32
61	P4-00557		1	Hex Head Cap Screw
62	P4-02406		1	Flat Washer
63	P4-00371		1	Nyl. Insert Lock Nut
64	A4-01293		3	Grommet, Hose
65	A4-01294		2	Grommet, Battery Cable
66	C1-02973		1	Sideboard Set, TC-300
67	A4-01163	A	1	Pump
68	A4-01105		1	Reservoir, 10" X 7" X 10"
69	P4-00688		1	Pipe Nipple
70	A4-00675		1	Female Elbow
71	P4-00879		3	Flat Washer
72	B3-00026	C	1	Rear Corner Standard, LH
73	D2-00951		1	Telescopic Cylinder, TC-300
74	I6-01423		1	Owners Manual
75	I6-03043		1	Installation Instructions
76	D2-01589		1	Quick Latch
77	A4-02350		1	Connector / Female / 480
78	P4-03174 Connectors		1	WIRING HARNESS- Connectors for P4-03174
79	connector-2 wire female		1	Connector / Male / 480
81	A4-01123		1	Hydraulic Hose .38x50"
96	A4-00412		1	Remote Control Box & Cable
98	A4-00381		1	Battery Cable-16ft-3/8"Lugs
99	A4-00381Lug		1	Battery Cable- 3/8" Lug
100	A4-00092-Wiring		1	Body Switch wiring
101	A4-03175		1	Harness,TC-310-Pass Side
102	A4-03176		1	Harness,TC-310 Rear Bumper
105	A4-03174		1	Harness,TC-310-Driver Side
106	D3-03393		1	Cab Guard Weldment / TC-310 / for GM4500
107	P4-02308		20	WIRE CLIP, ADHESIVE BACKED

TruckCraft Corporation
5751 Molly Pitcher Hwy South
Chambersburg, PA 17201



TC-300/310 Service Dumper

Tel. 800 / 755-3867
Fax. 717 / 375-2975
E-Mail: sales@truckcraft.com
Web: www.truckcraft.com

Optional Roll-up Tarp

Description

Operation

Installation

TruckCraft Corporation
5751 Molly Pitcher Hwy South
Chambersburg, PA 17201



TC-300/310 Service Dumper

Tel. 800 / 755-3867
Fax. 717 / 375-2975
E-Mail: sales@truckcraft.com
Web: www.truckcraft.com

Optional Coal Chute

Description

Operation

Installation

TruckCraft Corporation
5751 Molly Pitcher Hwy South
Chambersburg, PA 17201



TC-300/310 Service Dumper

Tel. 800 / 755-3867
Fax. 717 / 375-2975
E-Mail: sales@truckcraft.com
Web: www.truckcraft.com

Optional *D-Icer* Tailgate Replacement Salt Spreader

Description

Operation

Installation

TruckCraft Corporation
5751 Molly Pitcher Hwy South
Chambersburg, PA 17201

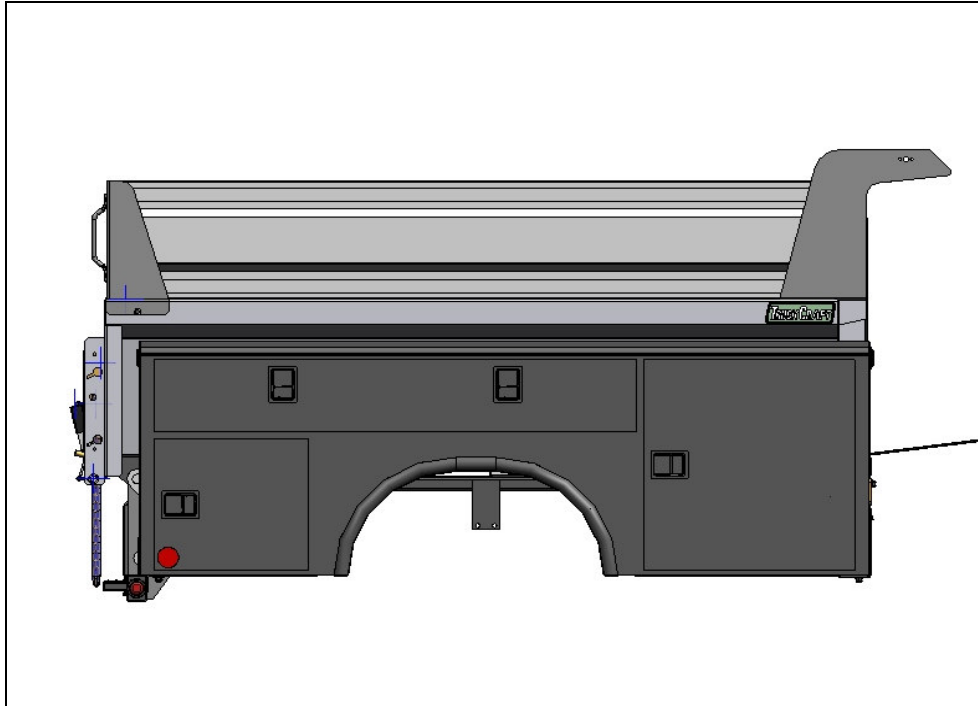


TC-300/310 Service Dumper

Tel. 800 / 755-3867
Fax. 717 / 375-2975
E-Mail: sales@truckcraft.com
Web: www.truckcraft.com

Optional *Aluma*-Boards Aluminum Side Boards

Description



Operation

Installation