



Proudly built in the USA

Owner's Manual

TC-101 Magnum



TruckCraft Corporation

Chambersburg, PA

1-800-755-3867

Copyright © 2009

www.TruckCraft.com

TRUCKCRAFT CORPORATION

5751 Molly Pitcher Hwy. S.
Chambersburg, Pa. 17202
Tel. 800.375.3867
Phone 717.375.2900
Fax 717.375.2975
www.truckcraft.com



"WHERE WORKMANSHIP IS EVERYTHING"

Table of Contents

Preface.....1

Ordering Repair Parts.....1

Safety Information.....2

Mounting and operating Instructions.....3

Maintenance.....7

Parts List.....8

L5-05329 Mounting Kit Parts List9

D2-05323 Cab Guard (Option).....10

B2-00636 Tarp Kit (Option)11

D1-05380 TC-131 D-ICER (Option)14

Warranty15

Preface

Read and understand all sections of this manual prior to installing or operating the TruckCraft dump bed. This manual contains information for the installation, operation, and maintenance of the TruckCraft TC-101 dump bed. Proper care and operation of the unit will assure years of dependable service. Your local TruckCraft Dealer will instruct you in its general operation. TruckCraft Corporation will be glad to answer any questions that may arise regarding the operation of your dump bed.

Ordering Repair Parts

When service is necessary, your local TruckCraft dealer can provide assistance. Always obtain original TruckCraft replacement parts from your dealer. Substitute items could affect the performance and warranty of the unit. Dealers in your area can be found on the web at **www.TruckCraft.com**.

When ordering parts the dump bed serial number and description or part number of parts needed are required. **The serial number is located on front plate (behind the cab) of the dumper weldment on the drivers side.**

Dumper Serial Number: _____

Date of Purchase: _____

Purchased From: _____

TruckCraft Telephone #800.375.3867 or 717.375.2900

TruckCraft Fax #717.375.2975

Method of shipping parts to be specified such as customer pickup, UPS, Common Carrier, Parcel Post or Air Freight. All orders to be confirmed in writing, or faxed, to insure proper understanding of request.

Having preventative maintenance parts on hand could save valuable time.

Improvements and Changes

Because TruckCraft strives to continually improve our products, we reserve the right to make changes and improvements wherever practical, without obligation to make those same changes or improvements to the equipment already sold. Photographs used in this manual may not be up-to-date with current design changes.

Safety Information

Observe the following safety procedures during the use of the dumper: Before operating read and understand all information furnished with your dumper and in this manual.

- ✓ Keep hands, feet and clothing away from moving parts.
- ✓ Never exceed the structural capacity (6,200 lbs.) of the dumper. Structural capacity means the maximum weight the dumper will carry and dump with an acceptable margin of safety. This does not mean that your truck can carry 6,200 lbs.
- ✓ Never exceed the manufacturer's GVWR (Gross Vehicle Weight Rating) of your truck. This rating can usually be found on the end of the driver's door just above or below the latch.
- ✓ Never exceed the truck axle and tire ratings.
- ✓ Always keep as much of the load as possible forward of the rear axle and evenly distributed from side to side.
- ✓ Never work under a raised body unless the body is supported by blocking or propped in the raised position. Always unload the body prior to using the prop.
- ✓ Operate the dumper only when the truck is on a firm, level surface.
- ✓ Always inspect the area around the truck for safe dumping prior to operating.
- ✓ Do not move the truck with the deck in a raised position.
- ✓ Never let the dumper sit with the bed raised when not in use.
- ✓ Always open the tailgate prior to raising the dumper when it is loaded.
- ✓ Store the remote control in a location that assures that no object can come in contact with the raise button unintentionally.
- ✓ Before raising the dumper, check for adequate overhead clearance. Be alert for overhead electrical wires.
- ✓ Regularly check and tighten all fasteners to the recommended torque values in the Torque Chart shown below.
- ✓ Maximum hydraulic pressure is factory set. Tampering with this setting will void the warranty and can damage hydraulic components and result in system failure.
- ✓ Do not attempt to repair this dumper yourself unless you have experience working on dump beds and are familiar with the hazards involved. For safety, take your dumper to the dealer from which it was purchased for all repairs and service.

| Torque Chart | | |
|--------------|------------------|------------------------|
| Size | 18-8 S. S. Bolts | Gr.5 Steel/Zinc Plated |
| | Torque Ft.-Lb. | Torque - Ft.-Lb. |
| 3/8-16 | 8 | 24 |
| 1/2-13 | 18 | 60 |
| 5/8-11 | 36 | 125 |
| 3/4-10 | 63 | 225 |

FIGURE 1

Mounting & Operation Instructions

CAUTION: Verify any lifting and support devices used can support the Dumper before picking up the assembly.

1. **WARNING:** Do not install the dump bed on a pickup bed liner. Bed liners have corrugated floors and prevent a solid installation.
2. Make sure the pickup truck is on level ground.
3. Remove the tailgate from the pickup truck.
4. Drill a 5/8" Diameter hole down through the pickup bed floor 1-1/2" forward of the rear edge and on the center line of the bed. See hole "A" on Figure #2 on page 4.
5. Insert the dumper into the pickup bed allowing approximately 18" of space at the front..
6. Attach a jumper cable to the dumper and to the frame of the truck for a temporary ground.
7. Cut and remove the shipping strap (if any) at the front of the dumper and temporarily hook the loose end of the power cable to the positive terminal of the truck battery.
8. Slide the dumper into the approximate mounting location.
9. While making sure everybody is standing clear, raise the dumper high enough to engage the safety prop. Use the up and down buttons on the remote control to raise and lower the dumper (See figure #3). Lower the dumper while holding the prop in a position so that it engages the prop pocket on the frame and is supporting the full weight of the dumper.

Figure 3

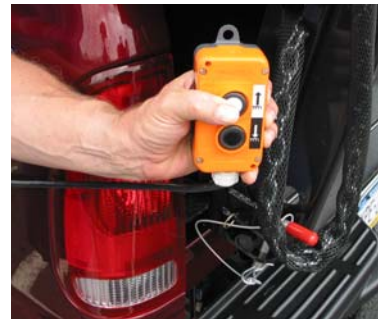
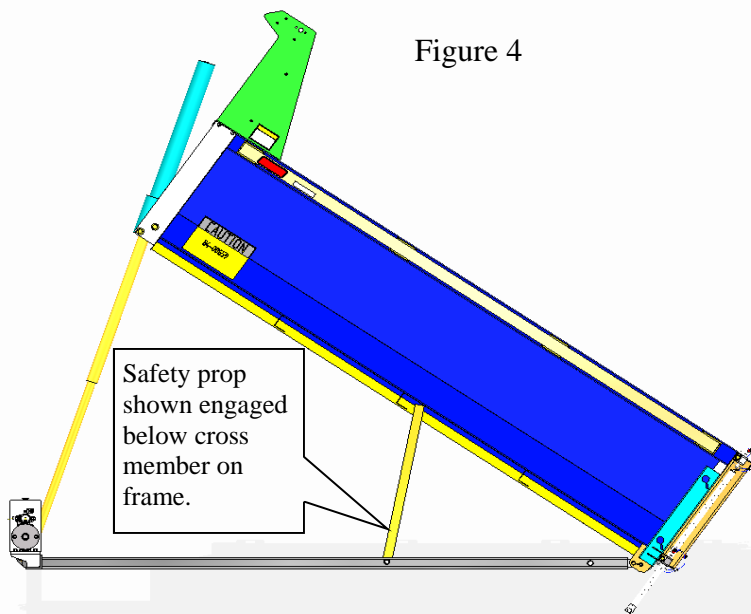
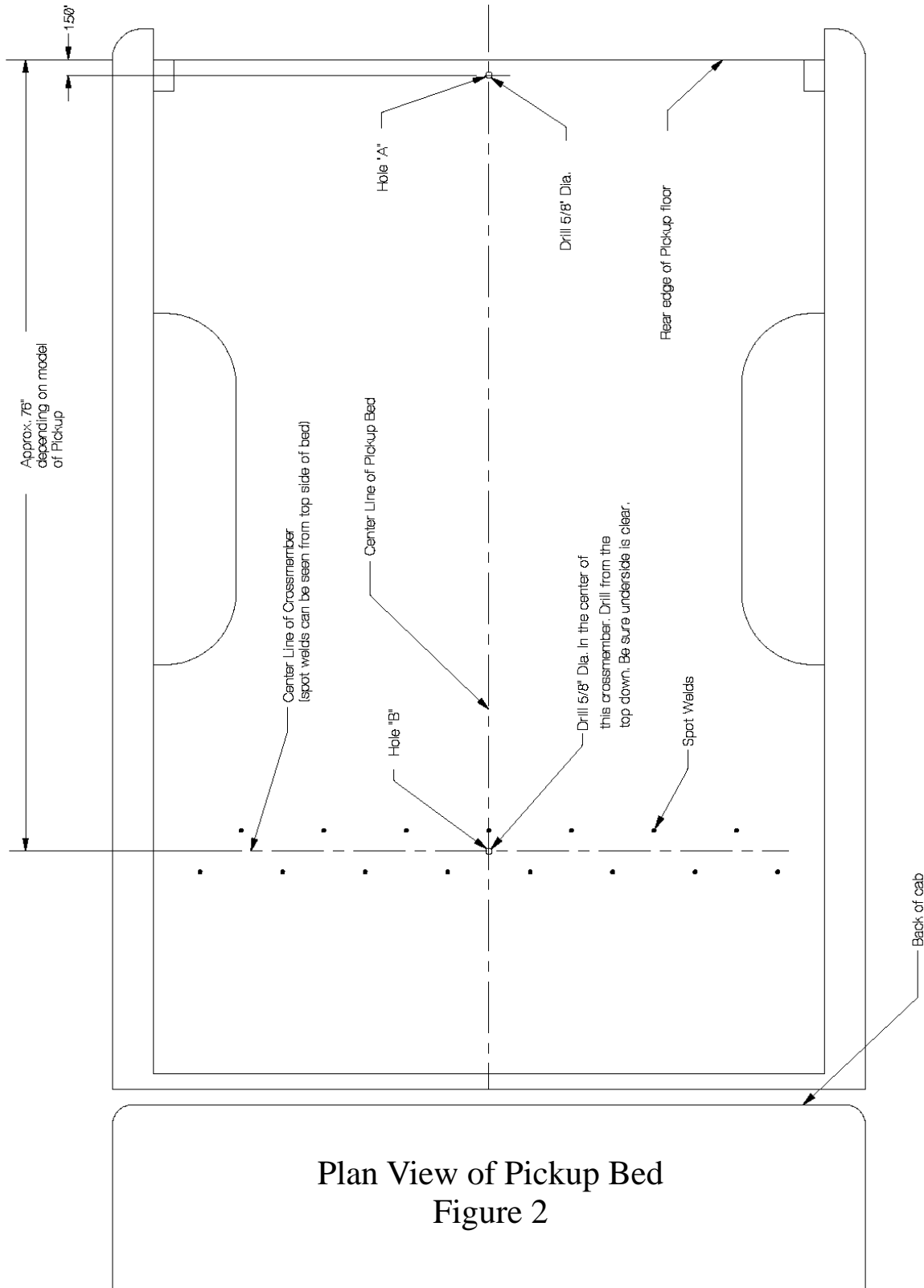


Figure 4



CAUTION: Do not work under the dumper without having the safety prop properly positioned (See figure #4).



10. Align mounting hole "A" at the rear of the truck with the hole in the dumper base frame. From mounting kit L5-05329 insert the 5/8 diameter x 4" long bolt through the hole (See figure #5). Install the 2" x 4" plate with 5/8" nut and washer provided under the pickup and fasten lightly.
11. Center the bed from side to side at the front.
12. From under the truck determine if hole "B" on figure 2 is accessible from the underside of the truck.

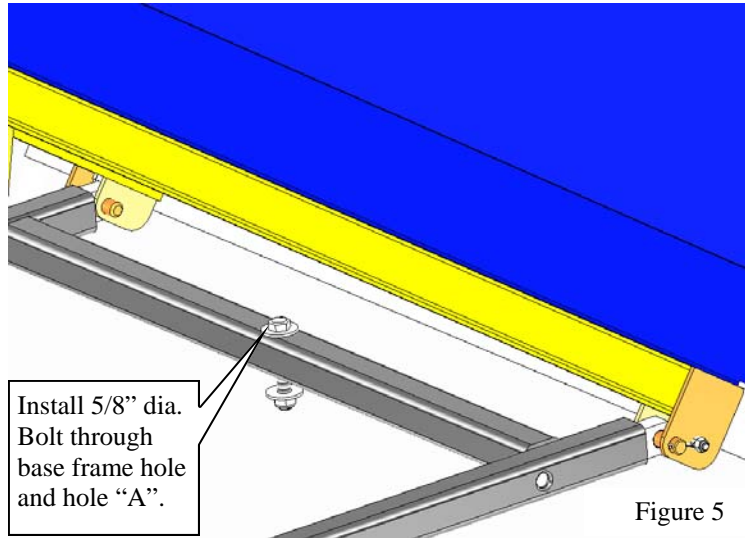
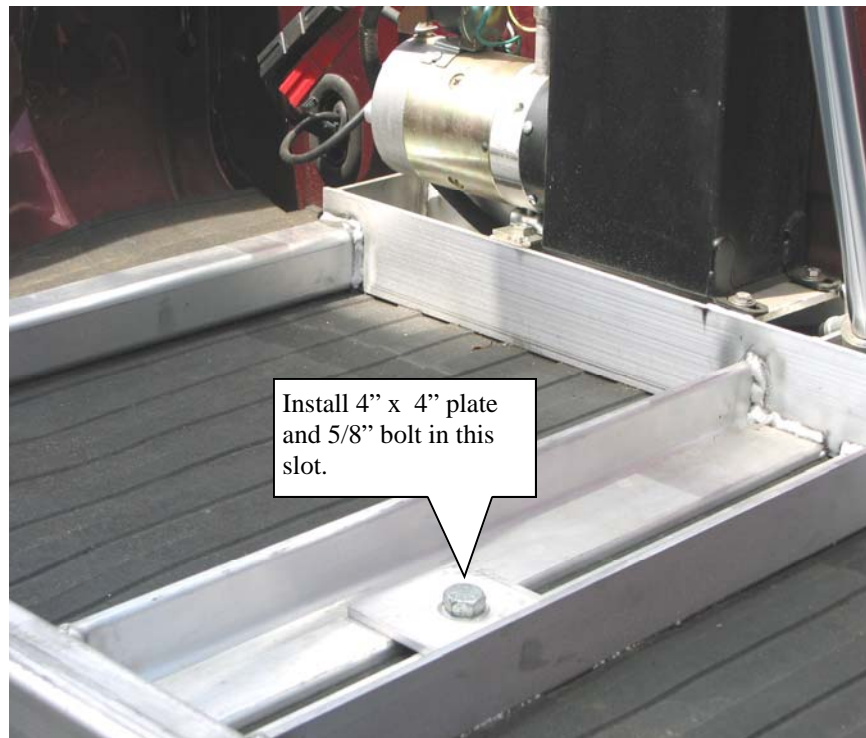


Figure 5

- If it is:** Drill a 5/8" hole through the pickup bed floor and through the cross member on the under side at location "B". This hole must align with the slot between the angles on the dumper base frame. On some trucks there will already be a hole in the cross member. Slide the 4" x 4" plate provided between the angles at the front of the dumper base frame. Install the 5/8" dia. X 5.5" Long bolt through the plate, dumper base and truck bed and frame. Install the 2/1/2" x 4" plate, 5/8" nut and washer underneath the truck bed and tighten the nut (See figure #6).



13. If the bolts provided are not the correct length for your particular pickup, you can purchase the correct bolts at most hardware and farm equipment stores.
CAUTION: Use grade 5 bolts minimum.
14. With the correct bolts, washers, nuts and plates in plate, tighten to the torques specified in figure 1.
15. Route the pump power cables to the battery in such a way as to ***avoid sharp edges and maintain a minimum distance of 8” from any portion of the exhaust system.*** By routing the power cable along the side of the truck frame, you will give the cable maximum protection. Fasten the cable to the truck frame using the stay straps provided. These stay straps should be inserted through holes in the truck frame to secure the cable. Do not cross under or over the truck frame where the cable could get pinched or frayed due to rubbing.
16. The hydraulic pump reservoir has been filled at the factory. If more fluid is necessary use only Dextron Automatic Transmission Fluid. **CAUTION:** Do not overfill. Adding too much fluid will cause the reservoir to overflow when the bed is lowered. The best method of refilling the reservoir is to place the dumper on the safety prop. Remove the reservoir breather and insert a clean ruler or small measuring stick into the reservoir making sure it touches the bottom of the reservoir, not the pickup tube. Add fluid until the depth of fluid in the reservoir is 4”. Leave the breather off and fully lower the bed to the down position. The bed can then be raised and the breather reinstalled. The reason for leaving the breather off during the first cycle after filling is to guard against pressurizing the reservoir in the event that it has been overfilled. Back pressure due to overfilling may dislodge the reservoir from the pump. If measuring the fluid level is not possible, add 2-3 oz. of fluid at a time and raise the bed until the pump does not change sound (pump air) at the end of the stroke. Note: Adding too much fluid will result in the reservoir overflowing when the bed is lowered. The hydraulic cylinder will require bleeding of all air each time you replenish fluid.
CAUTION: An accumulation of air in the lifting cylinder will cause the bed to bounce and possibly raise when the vehicle is moving.
BLEEDING THE CYLINDER: After filling the hydraulic reservoir to the proper level, locate and remove the plug on the top of the hydraulic cylinder. Place a clean rag over the plug opening and jog the “UP” button until a small amount of fluid comes out the opening. Replace the plug and re-check the reservoir fluid level as described above. If the fluid level is low, repeat all steps listed above.
17. Install the remote control in the cab by making note of the wire colors and connection locations prior to disconnecting the remote cable from the power unit. Then route the end of the cable through the floor of the pickup cab behind the driver’s seat (preferably through a rubber plug in the floor). The cable should then be routed up the back of the cab, over the top front edge of the pickup box, and down to the power unit where it should be reconnected. Use a stay strap to secure the cable to the front of the dumper bottom frame to assure clearance when the dumper is raised and lowered.

18. The Insert Dumper has been designed for use with most pickup trucks with an 8' bed. **Never exceed the manufacturer's gross vehicle rating of the truck.** These ratings can usually be found on the end of door just above or below the latch on the driver's side. Filling the bed with materials such as sand, stone, scrap steel, etc. could exceed the rating of the Dumper and would extremely overload the truck. Filling the bed without regard to the weight of the material being loaded can result in structural failure and injury. Never exceed the dumper and trucks maximum ratings.

Maintenance

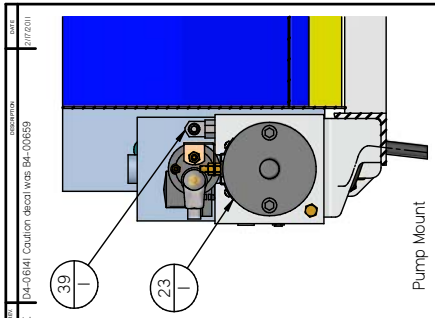
1. Check the hydraulic fluid level and bleed the cylinder every 6 months. If additional fluid is required add Dextron Automatic Transmission Fluid. The fluid should not need to be changed unless it becomes contaminated from an outside source. To **check the fluid level and bleed the cylinder** follow step #16 in the "Mounting and Operating Instructions".
2. Never operate the vehicle if any "bounciness" or "springiness" is noted in the empty dumper when fully down. The cylinder may have air trapped inside that could cause the empty dumper to bounce up into oncoming high wind, thus raising the dumper while moving. **BLEED THE CYLINDER IMMEDIATELY.** Follow the directions in step #16 in the "Mounting and Operating Instructions".
3. Never close off the cab guard window screen when the bed is empty if your dumper is so equipped. High winds and high driving speed may cause the bed to raise.
4. Depending on frequency of use, check all bolts for proper tightness and torque.

| # | P/N | Qty | Description | Mass |
|----|----------|-----|--|-------------|
| 1 | A4-00308 | 2 | Hinge Pin / .75 OD x 3.75 Lg / TC-100 | 0.92 lbrn |
| 2 | A4-00312 | 1 | Cyl Pin | 0.58 lbrn |
| 3 | A4-00546 | 2 | Bearing | 0.01 lbrn |
| 4 | A4-00547 | 2 | Bearing-88 ID x 1.0 OD x 1.0 Lg. | 0.01 lbrn |
| 5 | A4-00548 | 2 | GLIDE Bearing, 1.00" | 0.08 lbrn |
| 6 | A4-00611 | 1 | Hyd Hose -38 JIC Swivel x 36" | 0.72 lbrn |
| 7 | A4-01400 | 1 | Decal, Manual | 0.01 lbrn |
| 8 | A4-01401 | 1 | Decal / Serial # | 0.00 lbrn |
| 9 | A4-03313 | 1 | Branded Duplex Cord/4 GAX16-4/16L-R3 | 7.03 lbrn |
| 10 | B2-04279 | 4 | Bent Pin Assembly | 0.34 lbrn |
| 11 | B4-00192 | 2 | Bearing Block | 0.92 lbrn |
| 12 | B4-03509 | 2 | Small LOGO Decal | 0.00 lbrn |
| 13 | A4-05985 | 1 | Telescopic Cylinder, TC-120 | 52.00 lbrn |
| 14 | B4-04135 | 1 | Hyd. Fig. Elbow 90 | 0.14 lbrn |
| 15 | B4-04184 | 1 | Large LOGO Decal - 30 Effects | 0.00 lbrn |
| 16 | B4-04263 | 1 | Decal Strips / Drivers Side | 0.07 lbrn |
| 17 | B4-04264 | 1 | Decal Strips / Passengers Side | 0.07 lbrn |
| 18 | D3-05243 | 1 | Box Weldment / TC-101 / 8" | 401.31 lbrn |
| 19 | D3-05262 | 1 | Base Frame Weld/TC-101, 121 & 508/Std. | 63.02 lbrn |
| 20 | D3-05320 | 1 | Tailgate Weldment / TC-101 | 823.2 lbrn |
| 21 | D4-05471 | 1 | Decal, Magnum | 0.41 lbrn |

| # | P/N | Qty | Description | Mass |
|----|----------|-----|--------------------------------------|------------|
| 22 | P4-05472 | 2 | Decal, Magnum | 0.33 lbrn |
| 23 | P4-05629 | 1 | Hydraulic Pump/Tank #M-3519-0303 | 36.65 lbrn |
| 24 | P4-06141 | 1 | Caution/Capacity Decal - TC-101 | 0.01 lbrn |
| 25 | M4-03158 | 2 | Sleeve, Web, Black | 0.02 lbrn |
| 26 | M4-04284 | 4 | Bushing-1.25 LG / Tailgate Silencing | 0.12 lbrn |
| 27 | P4-00388 | 4 | 3/4" Split Ring | 0.02 lbrn |
| 28 | P4-00561 | 2 | Hex Head Cap Screw | 0.08 lbrn |
| 29 | P4-00562 | 5 | Hex Hd Cap Screw - .38-16 X1.0 SS | 0.24 lbrn |
| 30 | P4-00567 | 5 | Nyl. Insert Lock Nut - .38-16 SS | 0.12 lbrn |
| 31 | P4-00567 | 2 | Flat Washer - .25 SS | 0.01 lbrn |
| 32 | P4-00570 | 4 | Flat Washer - .38 SS | 0.03 lbrn |
| 33 | P4-00620 | 4 | Flat Washer - .50 SS | 0.06 lbrn |
| 34 | P4-00689 | 4 | Hex Hd Cap Screw - .50-13 X 1.25 SS | 0.39 lbrn |
| 35 | P4-00733 | 2 | Xmas. Tree Clip | 0.02 lbrn |
| 36 | P4-01264 | 3 | Cutter Pin - S.S. | 0.06 lbrn |
| 37 | P4-01789 | 2 | Nylon Finishing Plug / Block | 0.07 lbrn |
| 38 | P4-04126 | 6 | Finishing Plug / Block / .44 | 0.01 lbrn |
| 39 | P5-05630 | 1 | Elbow-37 Degree x ORB | 0.24 lbrn |
| 40 | P5-05680 | 1 | Cap. Square - Solderoid Cover | 0.01 lbrn |

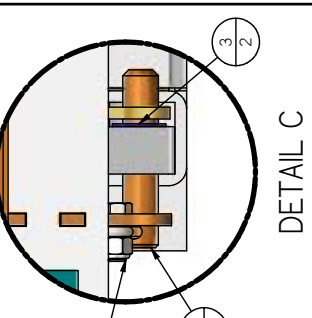
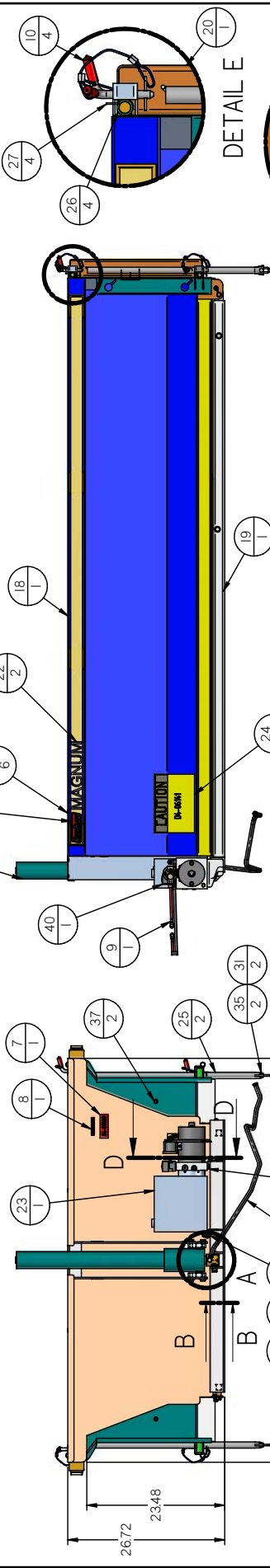
TC-101 Magnum
DI-05242
TC-101 Magnum Shortbed
DI-05512

Note: Parts list shown is for DI-05242. On DI-05512 Shortbed Dumpers make the following substitutions:
 Item #18 use D3-05514 Box Weldment.
 Item #19 use D3-05513 Base Frame Weldment.

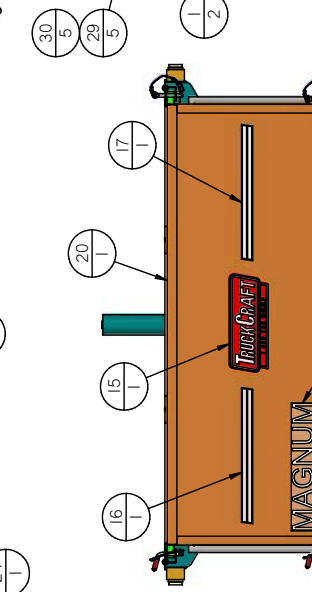


SECTION D-D

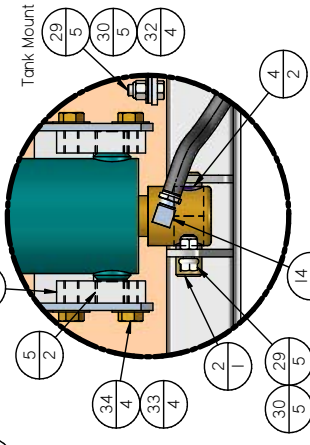
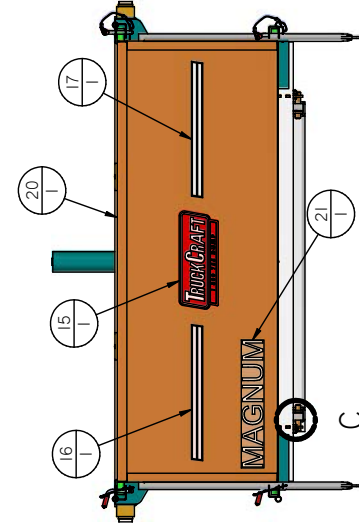
Pump Mount



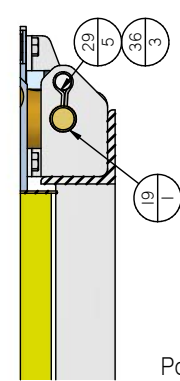
DETAIL E



DETAIL C



DETAIL A



SECTION B-B

TRUCKCRAFT
 TRUCKCRAFT INDUSTRIES, INC.
 1000 W. 10th Street
 Channahon, IL 61018
 (815) 429-2000
 FAX: (815) 429-2001

TC-101 Magnum Dump Insert-8
 6/18/10
 6293.95 lbrn

SHEET 1 OF 1 PART # DI-05242

TRUCKCRAFT CORPORATION
5751 Molly Pitcher Hwy. S.
Chambersburg, Pa. 17202
Tel. 800 - 755 - 3867
Fax. 717 - 375 - 2975
WWW.TruckCraft.COM



"WHERE WORKMANSHIP IS EVERYTHING"

L5-05329

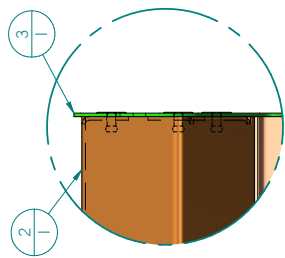
TC-101 Magnum/TC-121 Ultra

Mounting kit Parts List

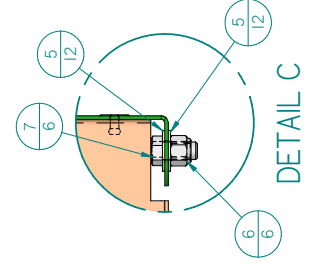
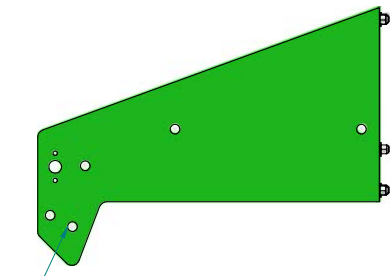
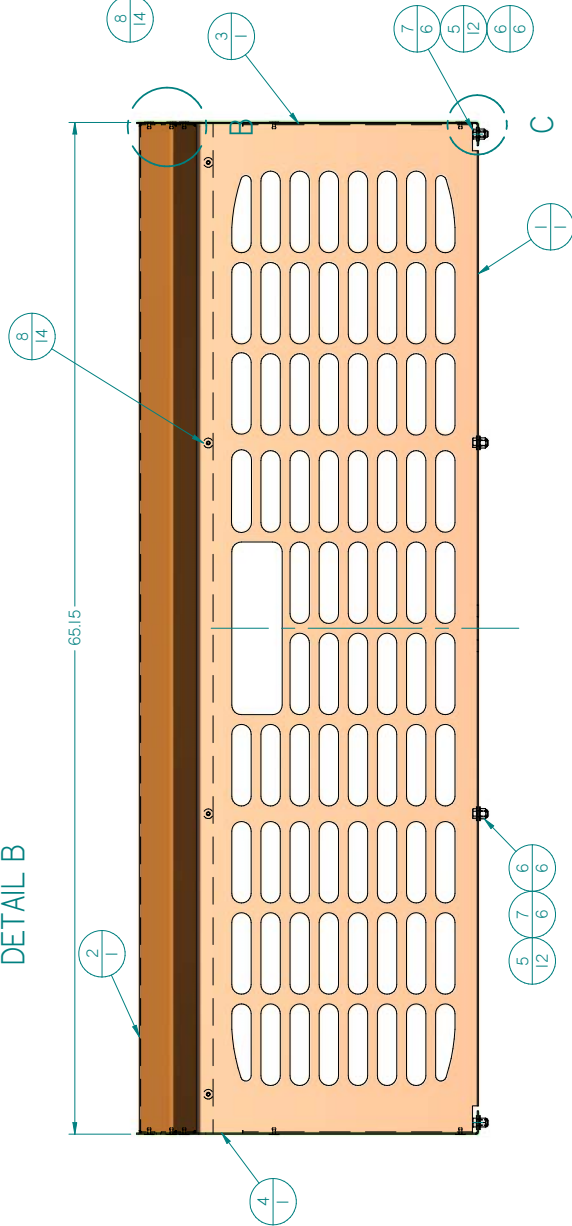
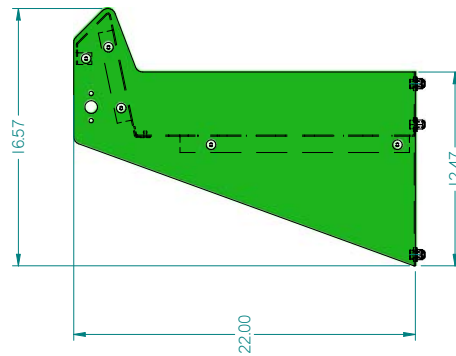
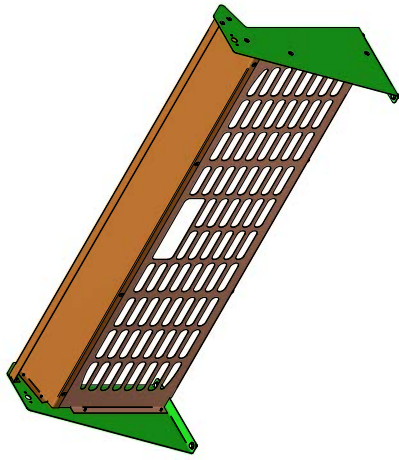
- | | | |
|------|--|----------|
| (1) | Battery Insulator Boot - | P4-00681 |
| (10) | Tie Straps - <i>(for attaching battery cable to truck frame).</i> | P4-00394 |
| (1) | 2" x 4" Mounting Plate - <i>(for under the pickup bed at hole "A").</i> | B4-00331 |
| (1) | 2-1/2" x 4" Mounting Plate - <i>(for under the pickup bed at hole "B").</i> | B4-00330 |
| (1) | 4" x 4" Mounting Plate - <i>(for top side over slot in aluminum base frame, hole "B").</i> | B4-00329 |
| (1) | 5/8" x 4" Grade 5 Hex Head Cap Screw, P4-00588, with Washers, P4-00593, and Nut, P4-00591 <i>(for hole "A" at rear of body).</i> | |
| (1) | 5/8" x 5-1/2" Grade 5 Hex Head Cap Screw, P4-00589, with Washers, P4-00593, and Nut, P4-00591 <i>(for hole "B" at front center of body).</i> | |

| # | P/N | Qty | Name | Weight |
|---|----------|-----|----------------------------------|-------------|
| 1 | D4-05326 | 1 | Cab Guard/ Front Sheet | 16,801 lbrm |
| 2 | D4-05327 | 1 | Cab Guard Top / TC-101 | 18,494 lbrm |
| 3 | D4-05325 | 1 | Cabguard, RH Side | 4,555 lbrm |
| 4 | D4-05324 | 1 | Cabguard, LH Side | 4,555 lbrm |
| 5 | P4-00570 | 12 | Flat Washer - .38 SS | 0,080 lbrm |
| 6 | P4-00567 | 6 | Nyl. Insert Lock Nut - .38-16 SS | 0,143 lbrm |
| 7 | P4-00561 | 6 | Hex Head Cap Screw | 0,241 lbrm |
| 8 | P5-05350 | 14 | Pop Rivet/Black/Large Head | 0,073 lbrm |

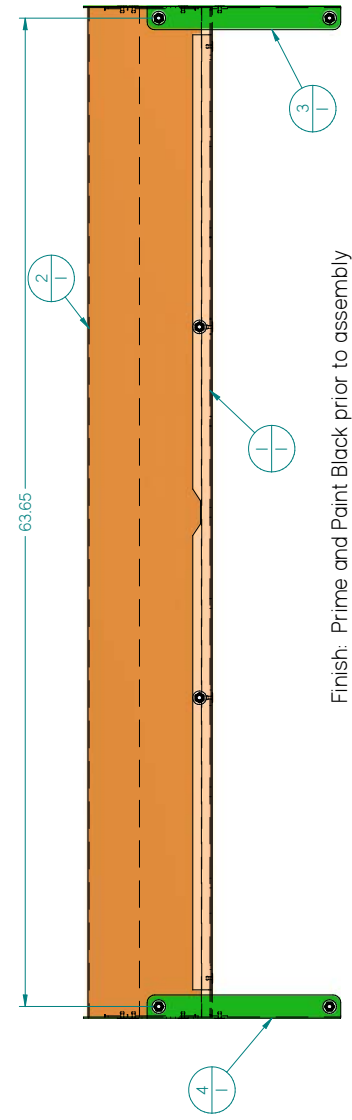
D2-05323
Cabguard



DETAIL B



DETAIL C



Finish: Prime and Paint Black prior to assembly

B2-00636

TC-101 Magnum/TC-121 Ultra *Tarp Kit* (Option)

INSTALLATION INSTRUCTIONS

1. Slide 1 nylon bearing onto tarp crank, bearing flange facing away from crank handle.
2. Insert tarp roller shaft end through the passenger side hole in the cab guard.
3. Slide crank through hole in cab guard on driver's side and into the tarp roller.
4. Slide 2nd bearing on to protruding shaft end with flange against cab guard.
5. Drive roll pin through hole in crank shaft to secure shaft to cab guard.



TRUCKCRAFT CORPORATION
5751 Molly Pitcher Hwy S.
Chambersburg PA 17202
Tel. 800 - 755 - 3867
Fax. 717 -375-2975
WWW.TruckCraft.COM



"WHERE WORKMANSHIP IS EVERYTHING"

6. Unfold tarp and stretch narrow width across crank shaft, lining up grommets along shaft.



7. Use radiator clamps, opening them up and wrapping them around crank shaft, and threading them through the tarp, one per grommet, to attach the tarp to the shaft. Keep tarp taught from side to side.



8. Slide batten board through looped end of tarp until board is centered in tarp. In center of the board, in the narrow side, (at the very end of tarp), drill a 3/16" hole into the edge of the board about 3/8" deep. Using the supplied eye screw, start it in the drilled hole and turn until tight.



9. Attach supplied rope to eye bolt and wind tarp onto crank shaft.



TRUCKCRAFT CORPORATION
5751 Molly Pitcher Hwy. S.
Chambersburg, Pa. 17202
Tel. 800 / 755 - 3867
Fax. 717 / 375 - 2975
WWW.TruckCraft.COM



"WHERE WORKMANSHIP IS EVERYTHING"

B2-00636

TC-101 Magnum/TC121 Ultra

Tarp Kit

(Option)

Parts List

| | | |
|-----|----------------------|----------|
| (1) | Tarp - | B4-00576 |
| (1) | Roller - | B3-00288 |
| (1) | Crank - | B3-00286 |
| (1) | Crank Grip - | A4-00358 |
| (1) | Batten Board - | A4-00417 |
| (2) | Flange Bearings - | A4-00408 |
| (4) | Clamps, Worm Gear - | A4-00407 |
| (1) | Roll Pin - | P4-00410 |
| (1) | Screw Eye - | P4-00411 |
| (1) | Rope - | R5-00412 |
| (4) | 1/4" x 1/2" Screws - | P4-00574 |
| (4) | 1/4" - 20 NC Nuts - | P4-00566 |



Proudly built in the USA

Owner's Manual

TC- 131 *D-ICER*



TruckCraft Corporation

Chambersburg, PA

1-800-755-3867

Copyright © 2006

See above Installation Manual for complete installation instructions on the TC-131 D-ICER.



TRUCKCRAFT CORPORATION WARRANTS EACH TC- 101 & TC- 121 ULTRA TO BE FREE FROM DEFECTS IN MATERIAL AND WORKMANSHIP FOR A PERIOD OF **THREE YEARS** FROM THE DATE OF INITIAL SALE, LEASE, RENTAL, OR OTHER DISPOSITION OF SUCH PRODUCT AND AGREES ONLY TO REPAIR OR REPLACE AT ITS OWN EXPENSE, F.O.B. THE PLACE OR PLACES OF MANUFACTURE, AT MANUFACTURER'S OPTION, ANY PART OR PARTS OF THE PRODUCT FOUND TO BE DEFECTIVE IN MATERIAL OR WORKMANSHIP, PROVIDED MANUFACTURER IS NOTIFIED OF SUCH DEFECT OR DEFECTS WITHIN THE **THREE YEAR** WARRANTY PERIOD AND GIVEN A REASONABLE TIME TO CORRECT THE DEFECT. DEFECTS FOLLOWING OPERATION BEYOND RATED CAPACITY OR THE IMPROPER USE OR APPLICATION OF ANY PRODUCTS SHALL NOT BE CONSIDERED DEFECTS WITHIN THE SCOPE OF THE FOREGOING WARRANTY. NO CLAIMS FOR LABOR SHALL BE CONSIDERED UNLESS AUTHORIZED BY THE MANUFACTURER.

TruckCraft Corporation

5751 Molly Pitcher Hwy. S., Chambersburg, PA 17202

PRINTED IN U.S.A.
©1995 TRUCKCRAFT CORP.

Dump Body Warranty Registration

To register your Warranty, please complete and forward this form within 30 days of purchase. Fax: 717-375-2975 or on line @ www.truckcraft.com

Business or individual name: _____

Street: _____

City: _____ State: _____ Zip: _____

Date of purchase: _____ Dealer: _____

Serial #: _____ *For location see Owners Manual*

Model: TC- 101 TC-120 TC-300 TC-400

Additional information which will help us improve our products.

What type of business or organization purchased this equipment:

- | | |
|---|--|
| <input type="checkbox"/> Municipality / Parks | <input type="checkbox"/> Landscape / Lawn Care / Nursery |
| <input type="checkbox"/> Property Management | <input type="checkbox"/> School / College / University |
| <input type="checkbox"/> Cemetery | <input type="checkbox"/> Farm / Ranch |
| <input type="checkbox"/> Personal use | <input type="checkbox"/> Golf Course |
| <input type="checkbox"/> Construction | <input type="checkbox"/> Other _____ |



NO POSTAGE
NECESSARY
IF MAILED
IN THE
UNITED STATES

BUSINESS REPLY MAIL
FIRST-CLASS MAIL PERMIT NO. 23 CHAMBERSBURG PA

POSTAGE WILL BE PAID BY ADDRESSEE



TRUCKCRAFT CORPORATION
5751 MOLLY PITCHER HWY
CHAMBERSBURG PA 17202-9954

