

SERVICE BODIES

DURAMAG®



R Series

All Aluminum Service Bodies



Shown with options

For more information, visit
DuraMagTruckBodies.com

STANDARD FEATURES

- All Aluminum Construction
- Extruded Box Tube Construction
- 6 Premium Roll-Up Safety Designed Doors—"Most Heavily Water Resistant Door on the Market"
- Heavy Slam Latch Tailgate
- Extreme Duty .625 Interlocking Extruded Flooring
- Fully Welded Construction - No Bolts to Come Loose
- Continuous-Weld HD Fender Flairs
- Sand-Blasted Preparation for Powder Coating (Not Inferior Wash/Zinc Phosphate)
- Powder Coated White or Black
- LED Marker Lights (Where Required)
- LED Penny Light in Each Compartment
- Inner Bed Walls and Exterior Top of Compartments—1/8" Diamond Plate
- Adjustable Shelf Brackets in All Compartments (One Shelf Included in Each Compartment)
- Pass Through Panel Between Compartments
- Powder Coated Tread Plate Splash Guards on Front (DRW Models only)

OPTIONS

- Light Packages:
 - Pkg 1:** Round STT—Backup in Rear Panel—Slim Line
 - Pkg 2:** Oval STT—Backup Lights in Bumper—Rubber Mounted
- Powder Coated Non-Skid Bumper with Tapered Corners—Recessed with Full Step
- Vice Socket on Bumper
- Service Body Headache Rack
- Cantilever Rack Systems
- Custom Racking Options
- Roll-Up Utility Bed Cover
- LED Strip Lights in Compartments—Activated by Door Opening
- Additional Compartment Shelving
- Key Fob—All Door Electronic Locking System
- CTECH Aluminum Tool Drawers

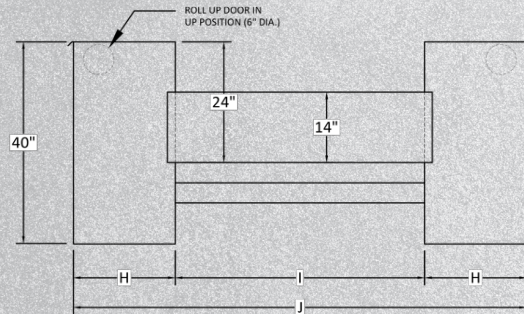
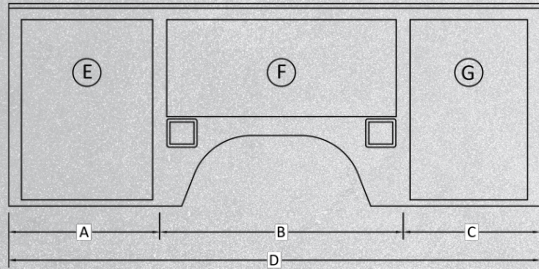
DISTRIBUTED BY:



MANUFACTURED BY:
F3 MFG Inc.
977 West River Road, #3
Waterville, Maine 04901
(207) 660-4700

All specifications and designs subject to change without notice.

CAB CHASSIS



Single Rear Wheel - 9'

A = 33"
 B = 43.5"
 C = 31"
 D = 113"
 E = 28" x 31.25" x 13.5"
 F = 13.5" x 43" x 13.5"
 G = 25.5" x 31.25" x 13.5"
 H = 15.5"
 I = 49"
 J = 80"

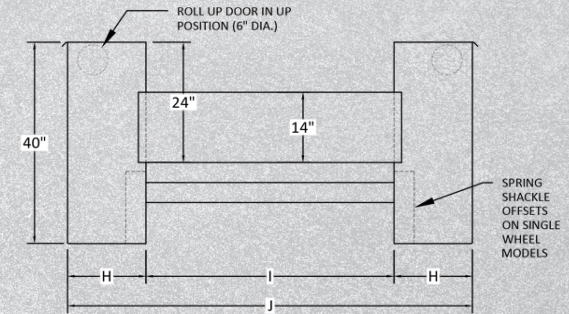
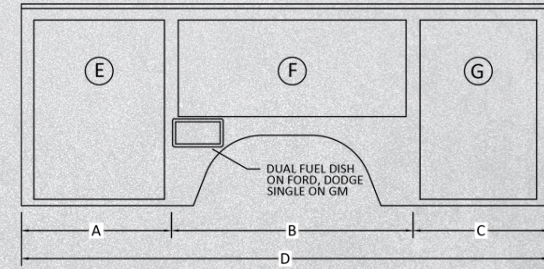
Dual Rear Wheel - 9'

A = 33"
 B = 43.5"
 C = 31"
 D = 113"
 E = 28" x 31.25" x 17.75"
 F = 13.5" x 43" x 17.75"
 G = 25.5" x 31.25" x 17.75"
 H = 20"
 I = 54"
 J = 94"

Dual Rear Wheel - 11'

A = 57"
 B = 43.5"
 C = 31"
 D = 137"
 E = 52" x 31.25" x 17.75"
 F = 13.5" x 43" x 17.75"
 G = 25.5" x 31.25" x 17.75"
 H = 20"
 I = 54"
 J = 94"

PICKUP DELETE

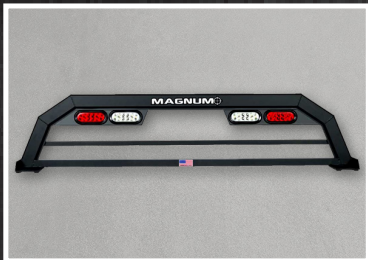


Single Rear Wheel - 8.5'

A = 29"
 B = 43.5"
 C = 26"
 D = 104"
 E = 23.75" x 31.25" x 13.5"
 F = 13.5" x 43" x 13.5"
 G = 21" x 31.25" x 13.5"
 H = 15.5"
 I = 49"
 J = 80"

Dual Rear Wheel - 8.5'

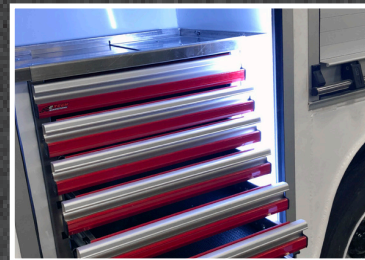
A = 29"
 B = 43.5"
 C = 26"
 D = 104"
 E = 23.75" x 31.25" x 17.75"
 F = 13.5" x 43" x 17.75"
 G = 21" x 31.25" x 17.75"
 H = 20"
 I = 54"
 J = 94"



Optional Service Body Rack.
 Available with or
 without Lights.



Optional Light Packages:
 Body or Bumper



Optional CTECH Drawers.
 Lightweight Aluminum,
 Extreme Durability



Standard Shelving.
 Additional Shelves Optional



Standard Roll-up Shutter
 Doors "Best in Class"