



Snow Bully

Parts and Service Manual



Monroe Snow & Ice Division

1051 W. 7th Street

Monroe, WI 53566

Phone: 800-880-0109

email: snowandicecontrol@monroetruck.com

TABLE OF CONTENTS

SAFETY INSTRUCTIONS	Page 2
MAINTENANCE INSTRUCTIONS	Page 3
TORQUE CHART	Page 3
HYDRAULIC PLUMBING DIAGRAM	Page 4
MOUNTING INSTRUCTIONS	Page 5
GENERAL INFORMATION	Page 6
REPLACEMENT PARTS	Page 8-18
HOW TO ORDER PARTS	Page 20
RETURN POLICY	Page 20
WARRANTY INFORMATION	Page 21

SAFETY INSTRUCTIONS

- Read all installation, safety and maintenance instructions completely before operating this equipment
- Keep all personnel clear of moving parts while equipment is being operated.
- Do not operate equipment in need of maintenance! Repair immediately!
- While operating this equipment, use common sense, use caution, be alert and be safety-conscious.

MAINTENANCE INSTRUCTIONS




In Season:

- Check for loose bolts and nuts daily, and re-torque before use. (Failure to inspect equipment on a daily basis may seriously affect safety and/or efficiency.)
- Lubricate all grease fittings every ten hours of normal use and more frequently under heavy use.
- A cross over relief valve (1800 PSI) MUST be plumbed into the reversing circuit.
- Check all hydraulic fittings for tightness on a regular basis.
- System pressure should NOT exceed 2000 PSI.
- Check cutting edge for wear. Do not let cutting edge wear closer than 1/2" to 3/8" from the bottom angle of the moldboard.
- Due to the nature of use and environment this equipment is operating in, damage and wear may occur at anytime. Therefore, **Monroe Truck Equipment** recommends the end user establish and follow a daily inspection routine before using this equipment.

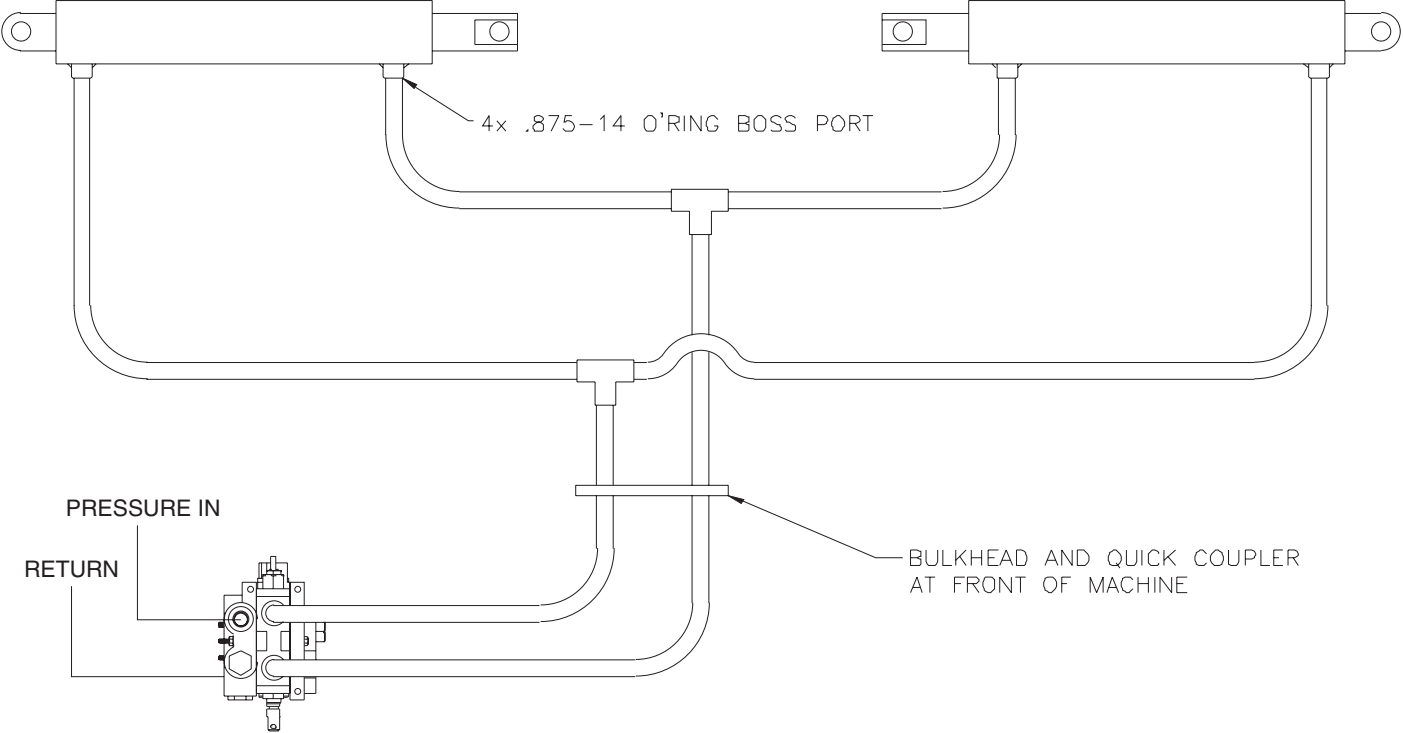
Off Season:

- Use care when disconnecting hydraulic lines to assure that no dirt or foreign objects enter the hydraulic system. Use caps to cover hydraulic hose fittings and insert plugs in hydraulic ports.
- Hydraulic cylinders should be fully retracted when stored during the off season to prevent damage or corrosion. The remaining exposed shaft surface should be coated with a thick grease to prevent corrosion, which must be removed before returning to regular service.
- Check mounting bolts for wear and/or damaged threads and replace before next season.

TORQUE CHART

SIZE	 GRADE 2	 GRADE 5	 GRADE 8
1/4-20	50 IN-LBS	75 IN-LBS	9 FT-LBS
3/8-16	15 FT-LBS	23 FT-LBS	35 FT-LBS
1/2-13	35 FT-LBS	55 FT-LBS	80 FT-LBS
5/8-11	75 FT-LBS	110 FT-LBS	170 FT-LBS
3/4-10	130 FT-LBS	200 FT-LBS	280 FT-LBS
1-8	190 FT-LBS	480 FT-LBS	680 FT-LBS
1 1/4-7	380 FT-LBS	840 FT-LBS	1360 FT-LBS

HYDRAULIC PLUMBING DIAGRAM



MOUNTING INSTRUCTIONS

1. Drive loader bucket into slots on the plow.
(See Figure 1)
2. Attach double clevis links (05050788) to the holes provided in ribs, both sides. (See Figure 2)
3. Attach 3/8" chain to double clevis links, both sides. (See Figure 2)
4. Weld grab hooks (05050647) to opposite ends of bucket if necessary.
5. Fasten both chains together behind loader bucket, use (1) ratchet load binders (05050111) to tighten chains together. (See Figure 3)
6. Remove extra chain if required.

Figure 1

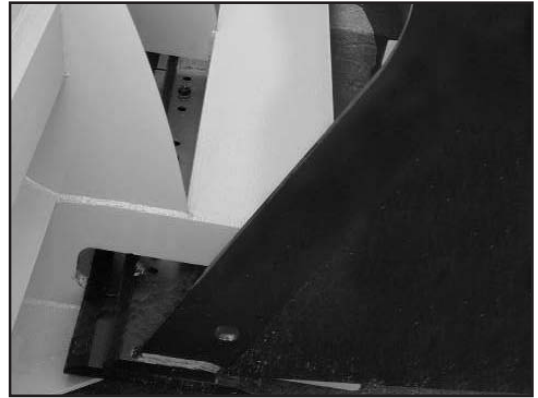


Figure 2

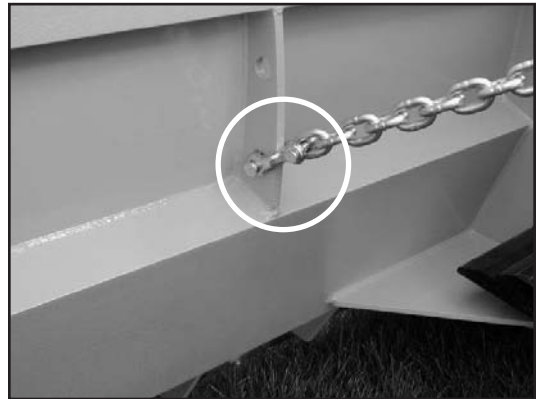


Figure 3



GENERAL INFORMATION

- Location descriptions are noted in direction of travel. (i.e. front, rear, left and right.)
- Delivery of replacement parts is subject to our sales delivery terms.
- Use only **Monroe Truck Equipment** O.E.M. replacement parts. Failure to do so will void warranty.
- Replacement parts listed in this manual reflect our most common snow plow items. If you do not find the part you require, please call your distributor.
- **Monroe Truck Equipment** reserves the right to make revisions or alterations to this parts manual.

NOTES



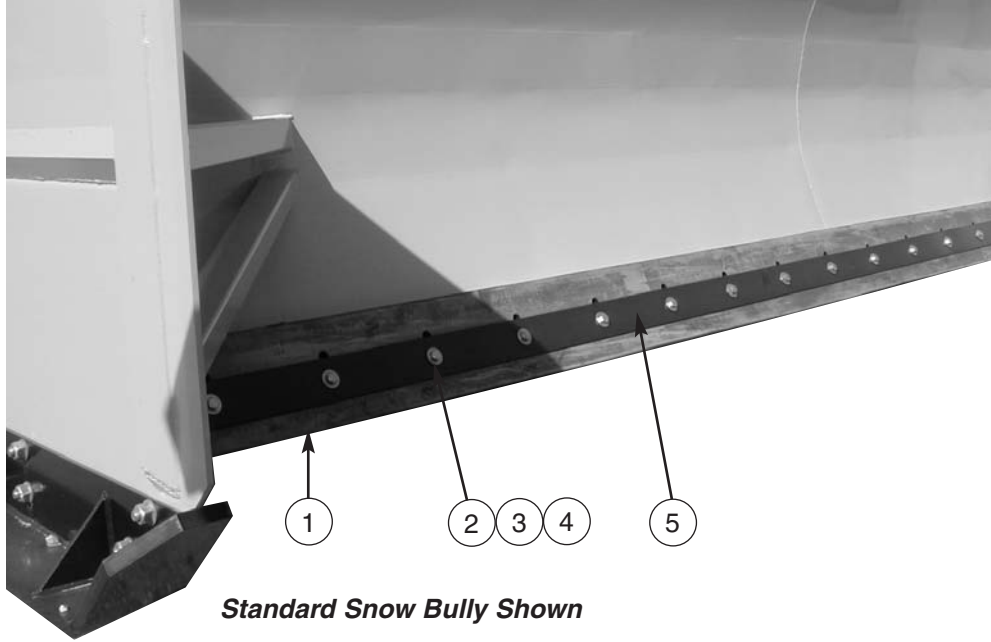
Standard Snow Bully Shown



Folding Snow Bully Shown

SNOW BULLY MOLDBOARD WELDMENTS

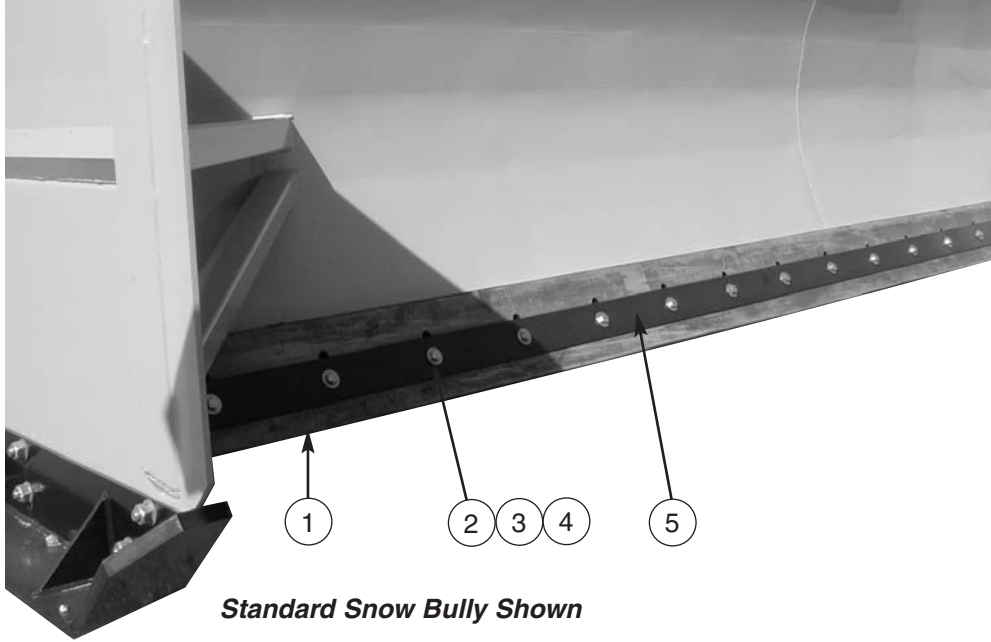
Item	Qty	Part Number	Description
1	1	00067920	Plow Weldment, 5010, Bucket Mount
	1	00066142	Plow Weldment, 5012, Bucket Mount
	1	00066116	Plow Weldment, 5014, Bucket Mount
	1	00066147	Plow Weldment, 5016, Bucket Mount
	1	00067922	Plow Weldment, 5018, Bucket Mount
	1	00067925	Plow Weldment, 5020, Bucket Mount
	1	00072397	Plow Weldment, 5030, Bucket Mount
	1	00067941	Plow Weldment, MP3810, Bucket Mount
	1	00067973	Plow Weldment, MP3812, Bucket Mount
	1	00067974	Plow Weldment, MP3814, Bucket Mount
	1	00068901	Plow Weldment, MP386, Skid Steer Mount
	1	00067986	Plow Weldment, MP388, Skid Steer Mount
	1	00068908	Plow Weldment, MP3810, Skid Steer Mount
	1	00068914	Plow Weldment, MP3812, Skid Steer Mount
	1	00083508	Plow Weldment, 5014, Bucket Mount, Folding
	1	00084088	Plow Weldment, 5016, Bucket Mount, Folding
	1	00084093	Plow Weldment, 5018, Bucket Mount, Folding
	1	00084702	Plow Weldment, 5020, Bucket Mount, Folding
	1	00084720	Plow Weldment, 5022, Bucket Mount, Folding
	1	00084740	Plow Weldment, 5024, Bucket Mount, Folding



CUTTING EDGE KIT, MP50 & MP38 BACKHOE LOADER

Item	Qty	Part Number	Description
1	1	05031022	Cutting Edge, 1½" x 10" x 10', Rubber
	1	05031024	Cutting Edge, 1½" x 10" x 12', Rubber
	1	05031134	Cutting Edge, 1½" x 10" x 14', Rubber
	1	05031135	Cutting Edge, 1½" x 10" x 16', Rubber
	1	05031137	Cutting Edge, 1½" x 10" x 18', Rubber
	1	05031138	Cutting Edge, 1½" x 10" x 20', Rubber
	1	00074491	Cutting Edge, 1½" x 10" x 30', Rubber
	2	See Chart	05010745
3	See Chart	05021311	Washer, ⅝", Flat, Zinc
4	See Chart	05020837	Nut, ⅝"-11, GC, Toplock, C&W
5	1	00067908	Retainer Bar, CE, 10'
	1	00066136	Retainer Bar, CE, 12'
	1	00066135	Retainer Bar, CE, 14'
	1	00066137	Retainer Bar, CE, 16'
	1	00067909	Retainer Bar, CE, 18'
	1	00067910	Retainer Bar, CE, 20'
	3	00067908	Retainer Bar, CE, 10' (30' Plow)

	10'	12'	14'	16'	18'	20'	30'
Bolts/Nuts	12	14	16	18	20	22	32
Washers	24	28	32	36	40	44	64

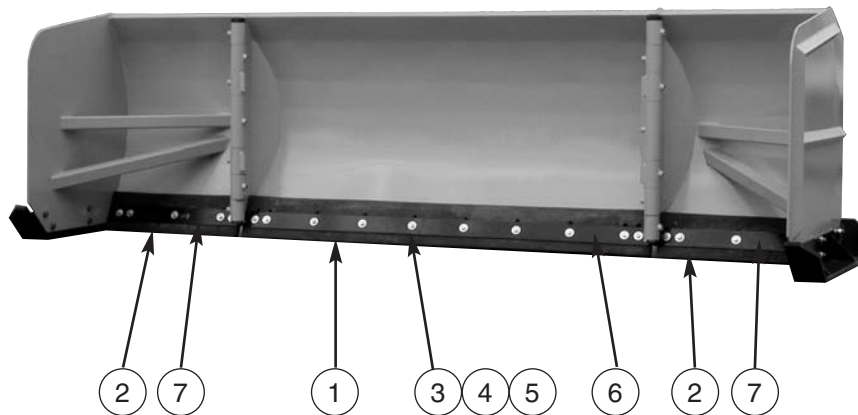


CUTTING EDGE KIT, MP38 SKID STEER MOUNT

Item	Qty	Part Number	Description
1	1	05031154	Cutting Edge, 1½" x 8" x 6', Rubber
	1	05031141	Cutting Edge, 1½" x 8" x 8', Rubber
	1	05031143	Cutting Edge, 1½" x 8" x 10', Rubber
	1	05031145	Cutting Edge, 1½" x 8" x 12', Rubber
2	See Chart	05010743	Bolt, ⅝-11 x 3", G8, HHCS, Zinc
3	See Chart	05021311	Washer, ⅝", Flat, Zinc
4	See Chart	05020837	Nut, ⅝-11, GC, Toplock, C&W
5	1	00068906	Retainer Bar, CE, 6'
	1	00067994	Retainer Bar, CE, 8'
	1	00067908	Retainer Bar, CE, 10'
	1	00066136	Retainer Bar, CE, 12'

	6'	8'	10'	12'
Bolts/Nuts	8	10	12	14
Washers	16	20	24	28

Folding Snow Bully Shown



CUTTING EDGE KIT, MP50, FOLDING			
Item	Qty	Part Number	Description
1	1	00083511	Cutting Edge, 1½" x 10" x 8', Rubber
2	2	00083512	Cutting Edge, 1½" x 10" x 3', Rubber (14' total plow length)
	2	00084085	Cutting Edge, 1½" x 10" x 4', Rubber (16' total plow length)
	2	00084092	Cutting Edge, 1½" x 10" x 5', Rubber (18' total plow length)
	2	00084715	Cutting Edge, 1½" x 10" x 6', Rubber (20' total plow length)
	2	00084736	Cutting Edge, 1½" x 10" x 7', Rubber (22' total plow length)
	2	00084742	Cutting Edge, 1½" x 10" x 8', Rubber (24' total plow length)
3	See Chart	05010745	Bolt, ⅝"-11 x 3½", G8, HHCS, Zinc
4	See Chart	05021311	Washer, ⅝", Flat, Zinc
5	See Chart	05020837	Nut, ⅝"-11, GC, Toplock, C&W
6	1	00083513	Retainer Bar, CE, 8'
6	2	00083514	Retainer Bar, CE, 3' (14' total plow length)
	2	00084086	Retainer Bar, CE, 4' (16' total plow length)
	2	00084091	Retainer Bar, CE, 5' (18' total plow length)
	2	00084716	Retainer Bar, CE, 6' (20' total plow length)
	2	00083513	Retainer Bar, CE, 8' (22' total plow length)
	2	00084743	Retainer Bar, CE, 8' (24' total plow length)

	14'	16'	18'	20'	22'	24'
Bolts/Nuts	20	22	24	26	28	30
Washers	40	44	48	52	56	60

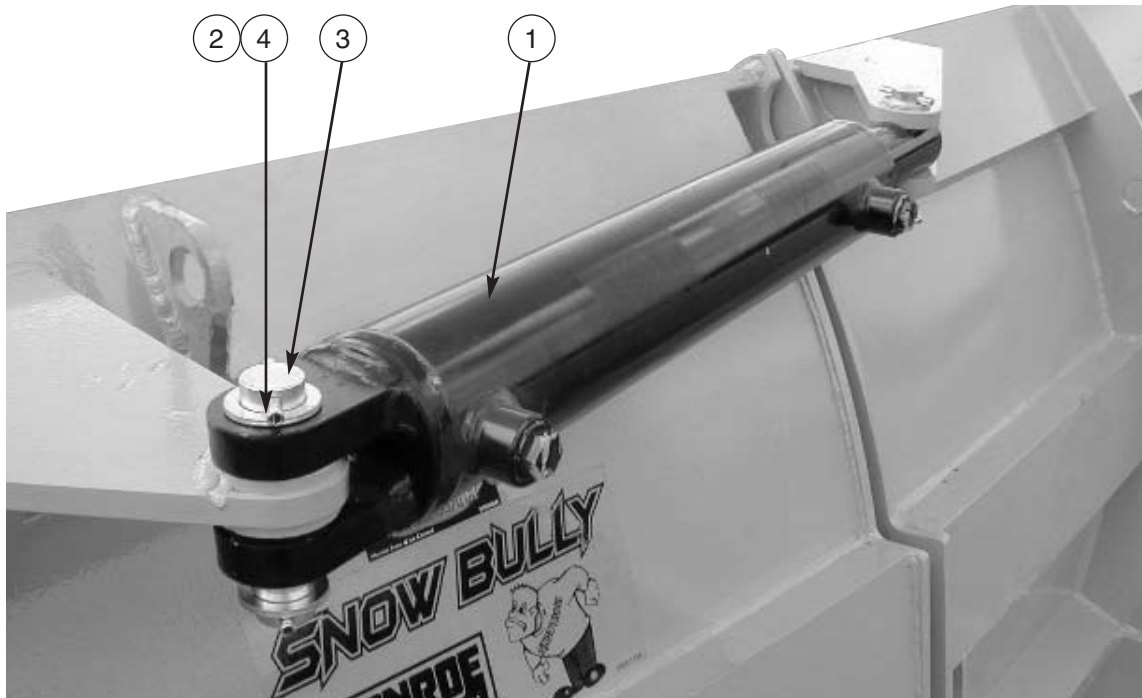


00068945 SKID SHOE KIT, MP50, NON-FOLDING & FOLDING

Item	Qty	Part Number	Description
1	2	00066132	Shoe Weldment, Skid, Plow
2	12	05010764	Bolt, ¼-10 x 2", G8, HHCS, Zinc
3	24	05021018	Washer, ¾", Flat, Zinc
4	12	05020849	Nut, ¼-10, GC, Toplock, C&W

00068944 SKID SHOE KIT, MP38, BACKHOE LOADER & SKID STEER MOUNT, NON-FOLDING

Item	Qty	Part Number	Description
1	2	00067942	Shoe Weldment, Skid, Plow
2	12	05010739	Bolt, ⅝-11 x 2", G8, HHCS, Zinc
3	24	05021311	Washer, ⅝", Flat, Zinc
4	12	05020837	Nut, ⅝-11, GC, Toplock, C&W



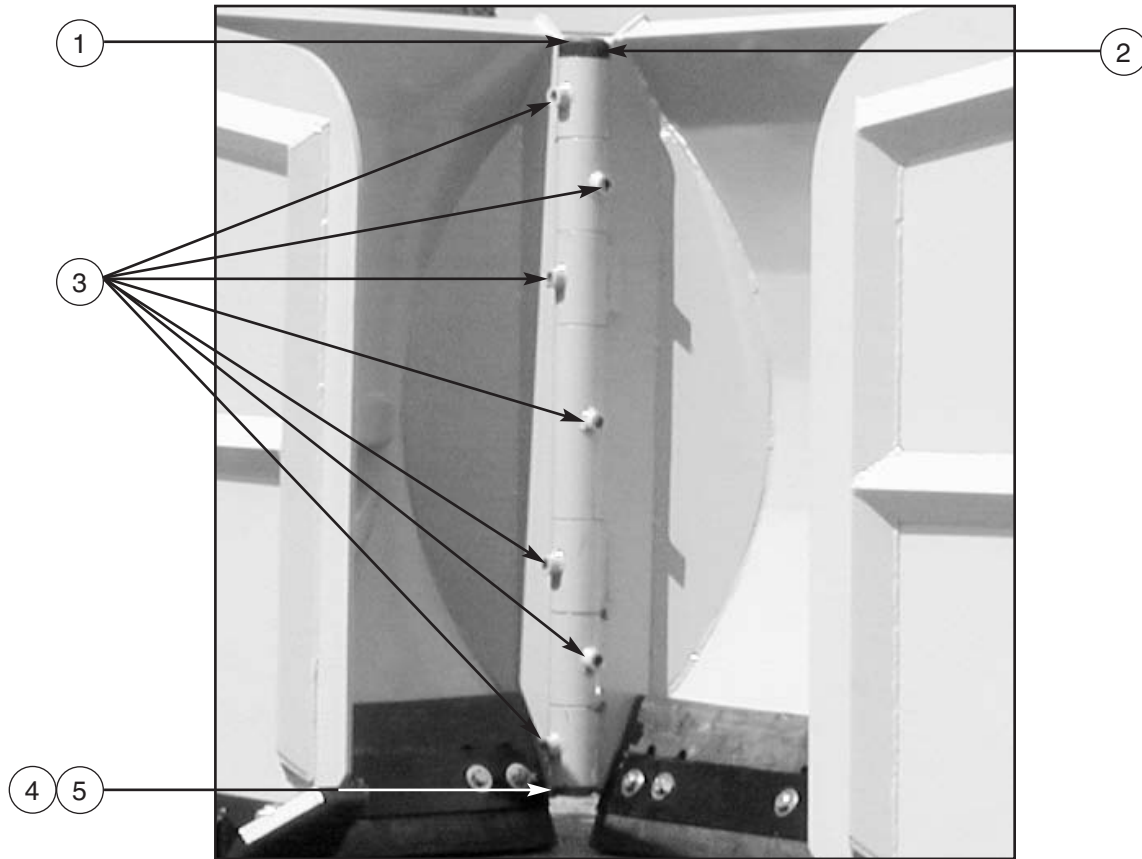
Hydraulic Folding Kit Shown

00081481 FOLDING KIT, HYDRAULIC

Item	Qty	Part Number	Description
1	2	05002280	Cylinder, 3" x 15", DA, Nit. Rod (See page 17)
2	8	05022026	Pin, ¼" x 2, Roll, Zinc
3	4	05022040	Pin, 1" x 4 ¼", No Head
4	8	05021202	Bushing, 1½" x 1" x 10 GA, Zinc, Narrow Rim

00081482 FOLDING KIT, MANUAL

Item	Qty	Part Number	Description
1	2	00081483	Bar Weldment, Locking (Not Shown)
2	8	05022026	Pin, ¼" x 2, Roll, Zinc (See above photo)
3	4	05022040	Pin, 1" x 4 ¼", No Head (See above photo)
4	8	05021202	Bushing, 1½" x 1" x 10 GA, Zinc, Narrow Rim (See above photo)



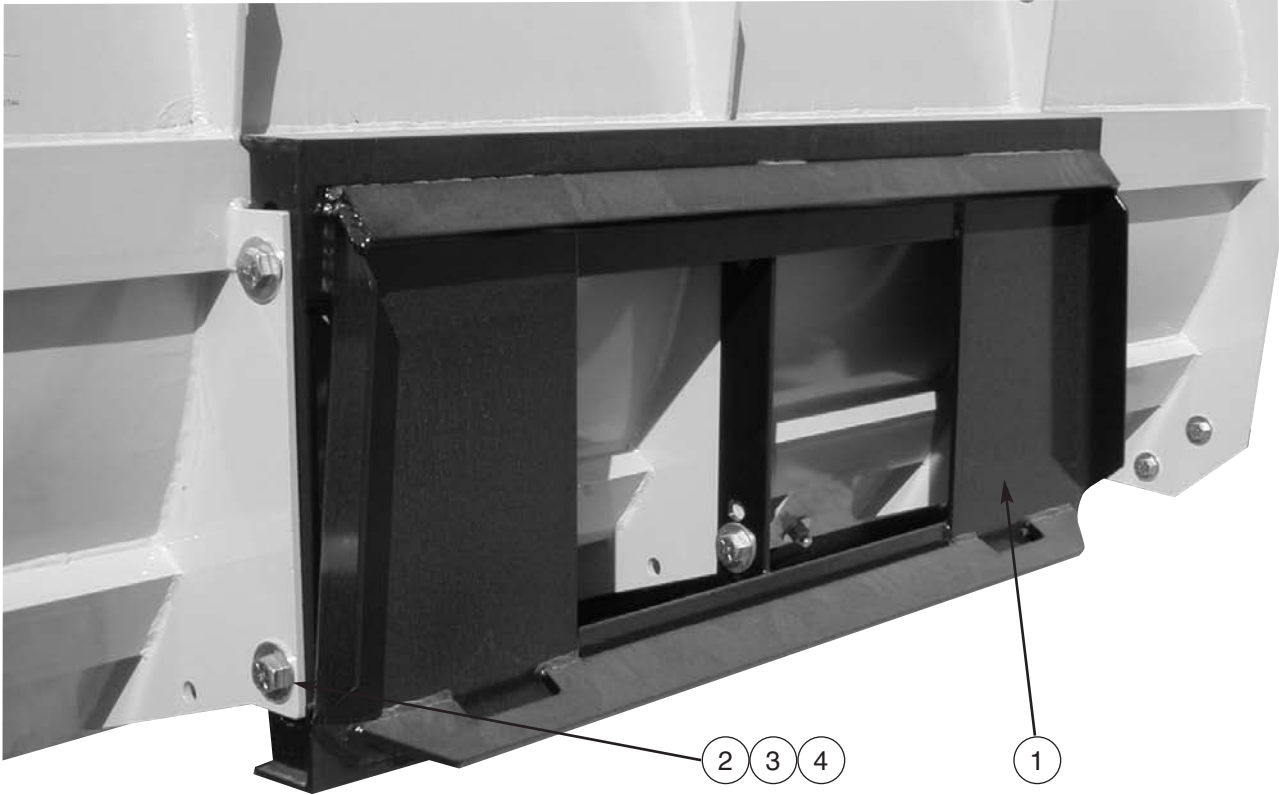
00082795 HINGE WELDMENT

Item	Qty	Part Number	Description
1	1	00082799	CR, 2½" Dia. x 47"
2	1	00045707	Round Tube, 3¼" OD x .344 Wall x 1"
3	7	05050288	Grease Zerk, ¼-28, Straight
4	1	05010651	Bolt, ⅝-16 x 3", G8, HHCS, Zinc
5	1	05020898	Nut, ⅝-16, GC, Toplock, C&W



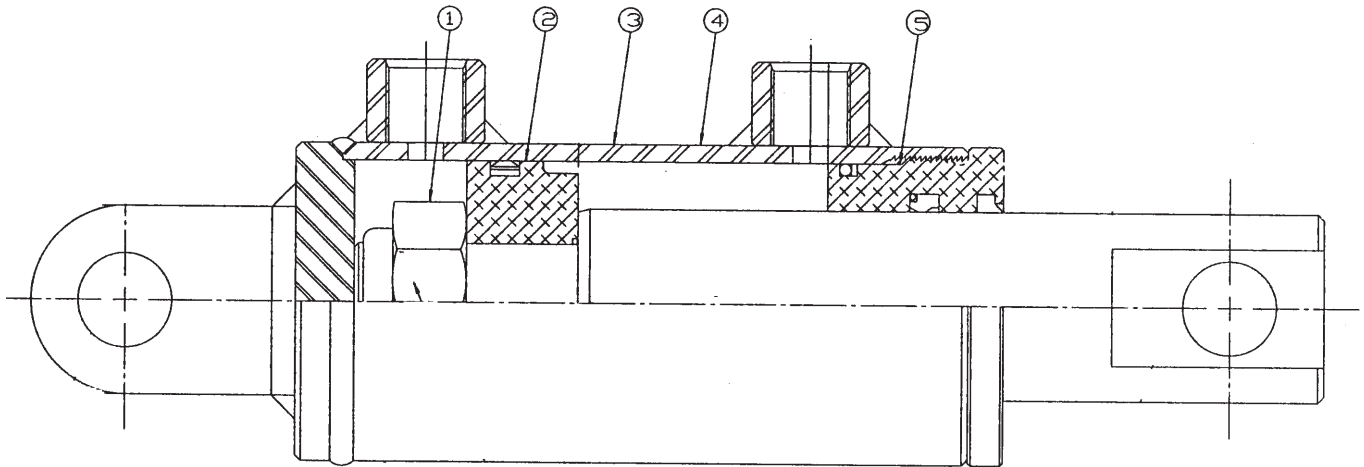
00068950 BINDER KIT
00068951 BINDER KIT, BACKHOE LOADER

Item	Qty	Part Number	Description
1	2	00068952	Chain, $\frac{3}{8}$ " x 120"
	2	00068953	Chain, $\frac{3}{8}$ " x 72" (For Backhoe Loader)
2	2	05050788	Link, Double Clevis, $\frac{5}{16}$ " x $\frac{3}{8}$ "
3	2	05050647	Hook, Grab, Clevis, MT, $\frac{3}{8}$ " Chain
4	2	05050111	Chain Binder, Ratchet, $\frac{3}{8}$ ", 5400# Work Load Limit



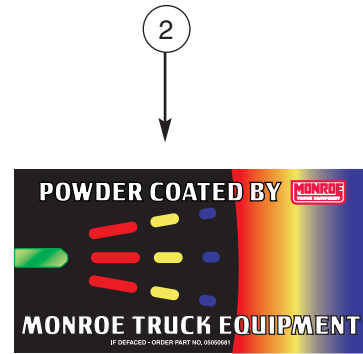
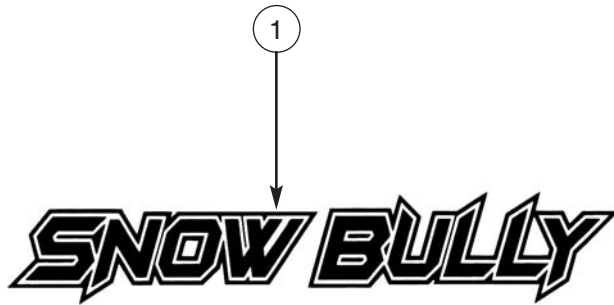
00068943 COUPLER KIT, UNIVERSAL, SKID STEER

Item	Qty	Part Number	Description
1	1	00067977	Coupler Weldment, Universal, Skid Steer
2	6	05010764	Bolt, ¼-10 x 2", G8, HHCS, Zinc
3	12	05021312	Washer, ¼", Flat, Zinc
4	6	05020849	Nut, ¼-10, GC, Toplock, C&W



05002280 CYLINDER, 3 X 15, DA, DF, NIT ROD

Item	Qty	Part Number	Description
1	1	05000022	Lock Nut, 1¼-12
2	1	05002281	Piston, UNI
3	1	05002282	Case Weldment
4	1	05002006	Rod
5	1	05002012	Head Int. Thd.
6	2	05002283	Port Plug, #10SA
7	---	---	Black Enamel Paint
8	1	05002007	Seal Kit



00068946 DECAL KIT, PLOW, SNOW BULLY

ITEM	QTY	PART #	DESCRIPTION
1	1	05051744	Decal, 12"x 6", Snow Bully, Black on White
2	1	05050681	Decal, Bonded Powder Coat Strength
3	1	05052311	Decal, Quality Check

HOW TO ORDER PARTS

To order or inquire about replacement parts, please contact the **distributor** or **store** that the product was purchased through. To speed the information flow, please have the following information ready:

- Model Number
- Serial Number
- Part Number and/or description as per the parts manual
- Quantity needed

For further information about **Monroe Truck Equipment** replacement parts, please call 800-880-0109 and ask for **Snow & Ice Parts Sales**.

RETURN POLICY

Merchandise returned to **Monroe Truck Equipment** must have a Returned Goods Authorization (RGA) form filled out completely and signed by authorized personnel. To get your RGA form, call 800-880-0109. For whole goods, ask for **Snow & Ice Sales**. For replacement parts, ask for **Snow & Ice Parts Sales**. All returned items are subject to a 15% restocking fee and must be sent freight prepaid!

MONROE TRUCK EQUIPMENT, INC. WARRANTY SNOW & ICE CONTROL PRODUCTS

Monroe Truck Equipment, Inc. warrants to the original purchaser, that if any part of the product proves to be defective in workmanship or material within **ONE YEAR** of the original installation, and is returned to us within 30 days of the discovered defect, we will (at our option) repair or replace the defective part. This warranty does not apply to damage resulting from misuse, neglect, accident, improper installation, normal wear items or lack of maintenance. This warranty is exclusive and supersedes all other warranties, whether expressed or implied. **Monroe Truck Equipment, Inc.** neither assumes, nor authorizes anyone to assume for it, any other obligation or liability in connection with this warranty and will not be liable for consequential damages.

All engines, pumps, motors, cylinders and valves are warranted by their manufacturer and not by **Monroe Truck Equipment, Inc.**. The manufacturer's warranty will apply to these parts. Electrical and hydraulic components are not to be disassembled without the express written permission of Monroe Truck Equipment. Use of replacement parts other than original equipment voids this warranty.

All defective parts returned must be accompanied by the model number, serial number, date installed, date of defect, description of defect, and the name of the distributor from whom it was purchased. All warranty claims must have prior written approval from **Monroe Truck Equipment, Inc.**

Please return the warranty registration card that accompanies this manual to confirm receipt of this parts catalog and acknowledge the information contained within. Failure to return the attached card may result in a voided warranty.



**1051 West 7th Street
 Monroe, WI 53566
 608-328-8127 ~ Fax: 608-328-4278**

***Warranty Policy
 Uninstalled Parts and Equipment provided by Monroe Truck Equipment***

Monroe Truck Equipment will provide the following limited warranty for a period of one year to the original purchaser of all uninstalled goods provided by Monroe Truck Equipment:

LIMITED WARRANTY: All goods provided by Monroe Truck Equipment (MTE) will be free from defects in material and workmanship for a period of one year from the date of purchase by the original purchaser. This limited warranty shall be the sole and exclusive remedy for any such product found to be defective. This limited warranty supercedes all previous warranties and is exclusive and in lieu of all other warranties, whether expressed or implied.

This limited warranty applies only to parts or accessories manufactured by MTE and/or provided by same. Except with respect to title, this limited warranty does not pertain to parts or accessories not manufactured and/or provided by MTE, regardless of whether such parts or accessories were selected and/or recommended by MTE. MTE will, as a service to the buyer, pass on any warranties received from the original manufacturer of MTE provided parts and/or accessories.

MTE will not under any circumstances be liable for any incidental or consequential damages whether in tort, contract, or otherwise, for any bodily injury, death, property damage, loss of use, or loss of income resulting from or in any way arising out of any goods provided by MTE, or their sale, use, or manufacture.

Any warranty claim deemed to be arising from the result of misuse, abuse, neglect, accident, improper installation, lack of maintenance, act of war (whether declared or otherwise), or act of God will be denied. Any repair or modification by the buyer or any third party, without the prior written consent of MTE, will void any possible warranty compensation. Any damage deemed to be the result of abnormal operation will not be compensated by this warranty.

Normal or special maintenance items such as fuels, fluids, tires, belts, hoses, filters, air cleaners, light bulbs, and any other items subject to normal wear and tear that are supplied in connection with goods provided by MTE are not allowed under this warranty.

All engines, pumps, cylinders, valves, and motors are warranted by their manufacturer and not by Monroe Truck Equipment. The manufacturer's warranty will apply to these parts. Electrical and hydraulic components are not to be disassembled without the express written consent of MTE. Any disassembly of MTE provided components without prior authorization will void the applicable warranty.

Monroe Truck Equipment shall be the sole and final determining authority as it applies to the administration of this warranty policy. Purchaser acknowledges receipt of Monroe Truck Equipment Warranty Policy and agrees to be bound by same.



GLOBAL SOLUTION
 ARMORED VEHICLES ~ SPORT TRUCK CONVERSIONS
 MUNICIPAL SNOW & ICE CONTROL ~ FIRE APPARATUS
 PICKUP TRUCK ACCESSORIES ~ TRUCK EQUIPMENT/MODIFICATIONS



Any and all warranty claims must be forwarded to MTE within 10 days of defect discovery. A copy of the original Monroe Truck Equipment invoice as well as the manufacturer's model number, serial number, and date of installation must accompany all correspondence regarding said claims. MTE will, at their option, choose whether to repair or replace the defective part unless otherwise specified by the original manufacturer of said part.

Procedures for Warranty Claims Notification

For submission of any warranty claim please contact Monroe Truck Equipment – Warranty Department at 800-356-8134

The following documentation will be needed when you call for initial warranty authorization:

1. A copy of the original MTE invoice.
2. Make, Model, and VIN or Serial Number of the equipment involved.
3. Part number and serial number of the part in question.
4. A complete description of the problem.

The following must accompany any claim submitted to Monroe Truck Equipment:

1. Documented photographs of any physical damage.
2. Inspection notes by MTE personnel or MTE authorized 3rd party.
3. Authorization number issued by Monroe Truck Equipment – Warranty Department.

Defective parts must be returned to Monroe Truck Equipment (freight prepaid) within 30 days of issuance of Authorization Number.

Monroe Truck Equipment reserves the right to void any warranty for failure to comply with Monroe Truck Equipment Warranty Policy.

This policy is effective January 1, 2004