

# LIFTMOORE 1032 CRANE

10,000 FT.-LB. MOMENT RATING  
3,200 LB. MAXIMUM CAPACITY

The Model 1032 all hydraulic crane is designed for extended duty applications. The 1032 comes with power rotation, power elevation and power extension as standard.

• **1032XP-15**

Hydraulic power extension from 7 Ft. to 11 Ft. with a manual pull out to 15 Ft.

With its 10,000 ft-lb. Moment rating and 3200 lb. maximum load the 1032 has the strength to handle many field service jobs.

• **Wireless Proportional Controls are Standard**

This control system gives the operator of the crane variable speed control of each crane function. Complete with "Tethered CAN Wire"



**Model  
1032XP-15  
Shown**

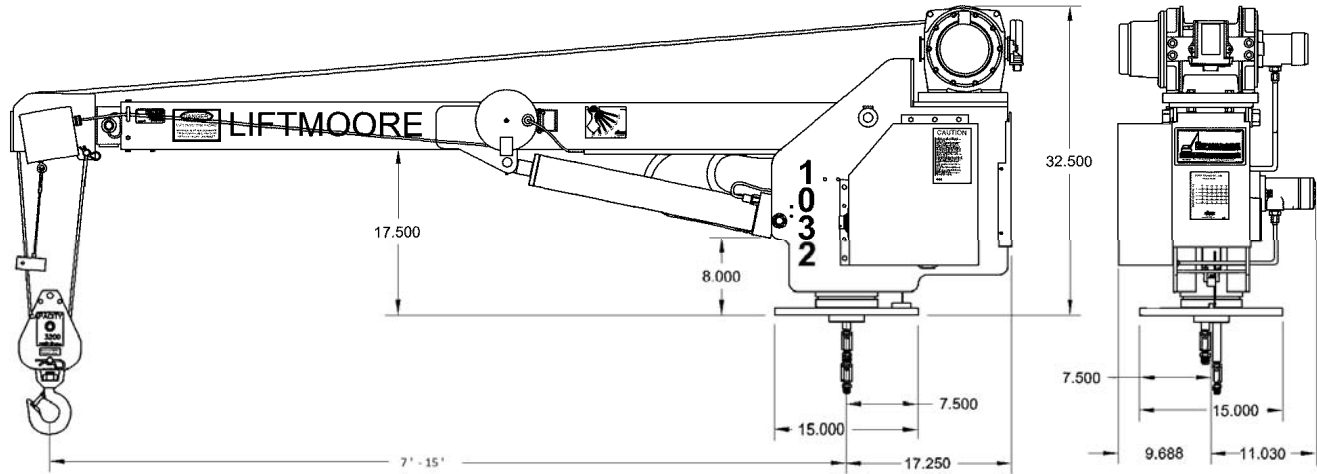
LOAD CAPACITY - LBS.		10,000 FT-LBS					
BOOM LENGTH - FT.	ANGLE - DEGREES						
	0°	15°	30°	45°	60°	75°	
7	1429	1479	1650	2020	2857	3200	
9	1111	1150	1283	1571	2222	3200	
11	909	941	1050	1286	1818	3200	
13	769	796	888	1088	1538	2972	
15	667	690	770	943	1333	2576	



HOUSTON, TEXAS  
FAX: (800) 824-5559 (USA & Canada)  
FAX: (713) 688-6324  
PHONE: (713) 688-5533  
www.liftmoore.com



# 1032 SPECIFICATIONS



## MOMENT RATING:

10,000 Ft.-Lbs.

## LIFT CAPACITIES:

* 3200 Lbs. @ 3 ft.	909 Lbs. @ 11 ft.
* 2500 Lbs. @ 5 ft.	769 Lbs. @ 13 ft.
1428 Lbs. @ 7 ft.	666 Lbs. @ 15 ft.
1111 Lbs. @ 9 ft.	

\* Travel block & double line hookup for loads greater than 2000 Lbs.

## HOIST WINCH:

The hoist winch is a planetary gear design with 2,000 lb. Capacity. The winch has a 21:1 gear ratio. The safety brake includes a one way clutch that releases on hoist up. The ratio between winch drum and wire rope diameters meet ANSI B30.5 requirements. The winch is powered by a low speed, high torque hydraulic motor. Line speed (single line) is 34 FPM at 5 GPM flow.

## BOOM:

The boom is capable of moving from -5 to +75 Degrees. A double acting cylinder with an integral counterbalance valve elevates the boom. The counterbalance valve has two important functions, this valve holds the cylinder in the event of hose failure and it controls the rate of boom descent. In addition it will relieve excess pressure induced on the boom.

## WIRE ROPE and SHEAVES:

62 Ft. of ¼ in. galvanized aircraft cable is supplied with a minimum breaking strength of 7000 lbs. The wire rope is outside of the boom and visible for operators continual inspection. A traveling block for easy two-part hookup is included. All sheaves meet ANSI requirements.

## 1032XP-15:

The boom extends under power from 7 Ft. to 11 Ft. with a 4-Ft. manual pull out to 15 Ft.

## HYDRAULIC SYSTEM:

This crane uses a pressure compensated flow control hydraulic system. A pilot operated differential sensing valve controls the flow rate to the rotation, elevation and extension functions. Excess flow is returned to tank at function pressure, not the relief pressure preventing excessive heat build up.

With it'sproportional flow control system the speed of each function can be varied between zero and full flow trough a trigger switch in the pendant control.

Fluid supply requirements are 6 GPM maximum flow @ 2500 PSI maximum pressure.

## ROTATION SYSTEM:

A worm gear set driven by a low speed, high torque hydraulic motor powers the crane's rotation function. The 1032 Crane rotates on two 3.75" ID tapered roller bearings. 375-degree rotation is standard.

## CONTROLS:

Includes wireless proportional controls. Allowing for precise handling Operator has precise control of all functions through a trigger switch mounted in the wireless transmitter. Includes the C.A.N. tethered cable.

## LOAD SENSOR:

A load-limiting sensor is installed in the elevation cylinder. This sensor will shut down hoist up, boom out & boom down when an overload is detected. The sensor will reset after the load is lowered.

## ANTI TWO BLOCK:

The anti two-block is standard on this crane and prevents extending the boom against the travel block and breaking the cable.

## ELECTRICAL:

The 1032 Crane's powered functions are all controlled by 12V. D.C. electric solenoid valves. 25 ft of 10-gauge wire and a 15-amp fuse are included.

## MOUNTING: A minimum 11,000 Lb. GVWR recommended.

Four 0.5" X 2.5" long Grade 8 hex head cap screws and lock nuts are provided. Mounting plate is 15" square with a 12" square bolt pattern.

## OUTRIGGERS:

An outrigger is needed for stability requirements of OSHA 1910.180. The outrigger is necessary to reduce the load on the crane's rotation system and the truck's suspension.



HOUSTON, TEXAS  
 FAX: (800) 824-5559 (USA & Canada)  
 FAX: (713) 688-6324  
 PHONE: (713) 688-5533  
[www.liftmoore.com](http://www.liftmoore.com)

# LIFTMOORE 1640 CRANE

16,000 FT.-LB. MOMENT RATING  
4,000 LB. MAXIMUM CAPACITY

The Model 1640 features all hydraulic operation with a planetary winch. The efficient planetary drive winch produces wire line speeds up to 30 Ft. per Minute with only a 5 GPM flow. Single line capacity of the winch is 3000 Lbs.

•**1640 X-16**

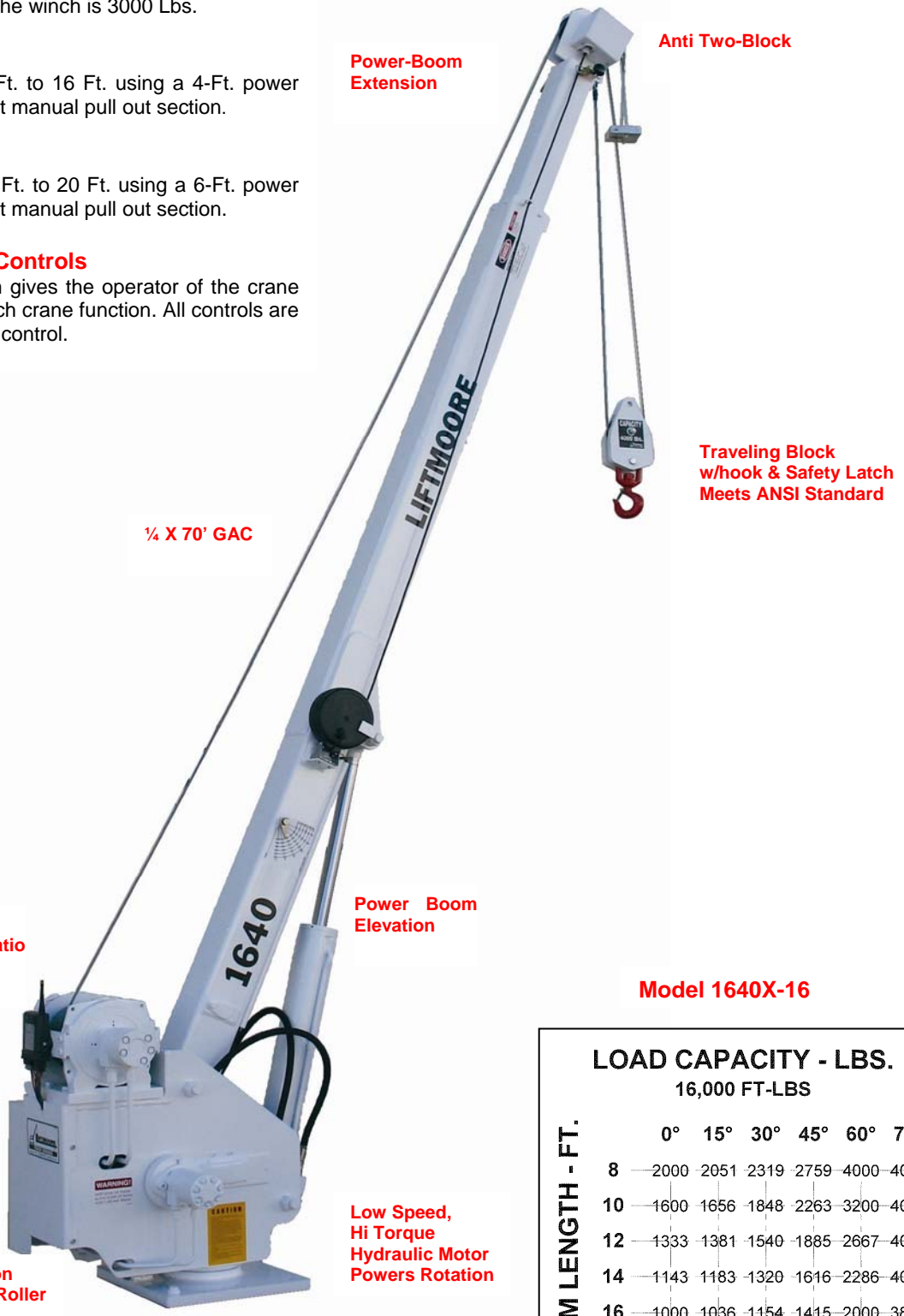
The boom extends from 8 Ft. to 16 Ft. using a 4-Ft. power extension cylinder and a 4-Ft manual pull out section.

•**1640X-20**

The boom extends from 10 Ft. to 20 Ft. using a 6-Ft. power extension cylinder and a 4-Ft manual pull out section.

•**Optional Proportional Controls**

This optional control system gives the operator of the crane variable speed control of each crane function. All controls are through the remote pendant control.



Power-Boom Extension

Anti Two-Block

Traveling Block w/hook & Safety Latch Meets ANSI Standard

1/4" X 70' GAC

Planetary Gear Winch Drum meets ANSI Ratio Requirements

Power Boom Elevation

Rotates on Tapered Roller Bearings

Low Speed, Hi Torque Hydraulic Motor Powers Rotation

**Model 1640X-16**

**LOAD CAPACITY - LBS.**  
16,000 FT-LBS

BOOM LENGTH - FT.	16,000 FT-LBS					
	0°	15°	30°	45°	60°	75°
8	2000	2051	2319	2759	4000	4000
10	1600	1656	1848	2263	3200	4000
12	1333	1381	1540	1885	2667	4000
14	1143	1183	1320	1616	2286	4000
16	1000	1036	1154	1415	2000	3865
18	889	920	1026	1257	1778	3434
20	800	828	924	1131	1600	3091

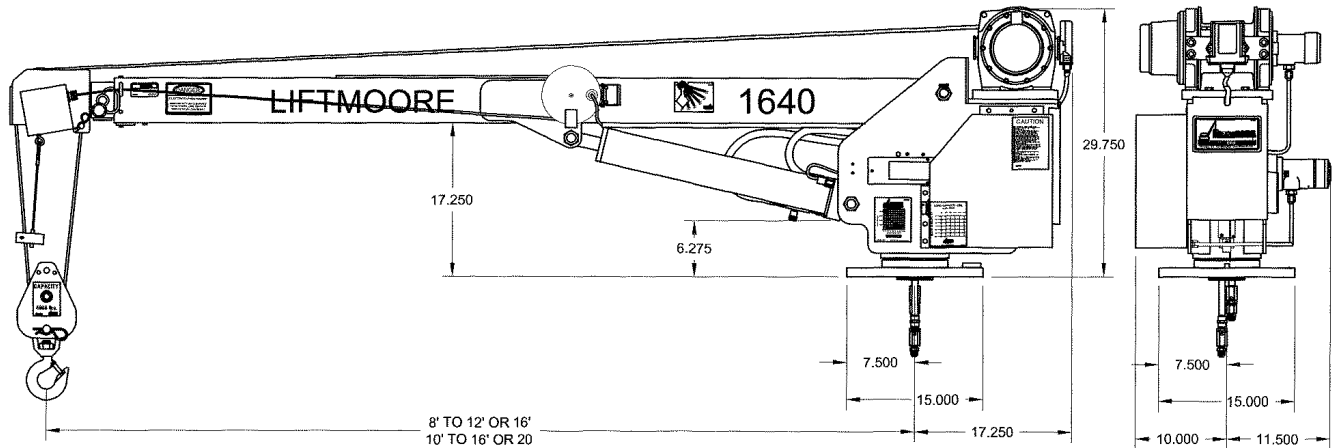


HOUSTON, TEXAS  
FAX: (800) 824-5559 (USA & Canada)  
FAX: (713) 688-6324  
PHONE: (713) 688-5533  
www.liftmoore.com



713-688-5533  
WWW.LIFTMOORE.COM

# 1640 SPECIFICATIONS



## MOMENT RATING:

16,000 Ft.-Lbs.

## LIFT CAPACITIES:

* 4000 Lbs. @ 4 ft.	1333 Lbs. @ 12 ft.
2666 Lbs. @ 6 ft.	1142 Lbs. @ 14 ft.
2000 Lbs. @ 8 ft.	1000 Lbs. @ 16 ft.
1600 Lbs @ 10 ft.	800 Lbs. @ 20 ft.

\* Travel block & double line hookup for loads greater than 3000 Lbs.

## HOIST WINCH:

The hoist winch is planetary gear driven for the most efficient operation in the industry. The winch is powered by a low speed, high torque hydraulic motor. Single line speed of the winch is 30 Ft per Minute with a 5 GPM input flow. Winch drum to wire rope ratio meet ANSI B30.5 requirements. The winch has a single line, bare drum capacity of 3000 Lbs, and incorporates a load applied mechanical brake located in the winch drum.

## WIRE ROPE and SHEAVES:

70 Ft. of ¼ in. galvanized aircraft cable is supplied with a minimum breaking strength of 7000 lbs. The wire rope is outside of the boom and visible for operator's continual inspection. A traveling block for two-part hookup is included. All sheaves meet ANSI requirements.

## BOOM:

The boom angle varies from -5 to +75 degrees elevated by a 3.5 In. diameter double acting cylinder. An integrally mounted counterbalance valve is included with the cylinder for positive load holding and safety. The counterbalance valve has three important functions, this valve holds the cylinder in the event of hose failure and it controls the rate of boom descent, and functions as a relief valve in the event of an induces overload.

## 1640X-16

The boom extends under power from 8 Ft. to 12 Ft. with a 4 ft. Manual pull out to 16 Ft.

## 1640X-20

The boom extends under power from 10 Ft. to 16 Ft. with a 4 ft. manual pull out to 20 Ft.

## HYDRAULIC SYSTEM:

An engine driven hydraulic pump powers all crane functions. (P.T.O., pump, reservoir and hoses are not supplied) all directional control and flow control valves are incorporated in a single manifold. The pressure compensated flow control system will dump excess flow at slightly above the function operating pressure, not the relief pressure setting. Flow and pressure requirements are 6 GPM maximum flow @ 2700 PSI maximum pressure.

With the **optional** proportional flow control system the speed of each function can be varied between zero and full flow through a trigger switch in the pendant control. (Models 1640XP)

## ROTATION SYSTEM:

A 54:1 self locking worm gear powered by a low speed, high torque hydraulic motor drives the cranes rotation, The 1640 rotates on two 4.00 in. ID tapered roller bearings. Rotation is limited to 370 degrees.

## REMOTE PENDANT CONTROL:

A 25-Ft. long remote pendant is provided for control of each powered function. All switches are momentary contact. The Pendant control is removable from the crane to prevent unauthorized use of the crane.

## LOAD SENSOR:

A load-limiting sensor is installed in the elevation cylinder. This sensor will shut down hoist up, boom out & boom down when an overload is detected. The sensor will reset after the load is lowered.

## ANTI TWO BLOCK:

An anti two-block is standard on this crane and prevents extending the boom against the travel block with the resulting possible cable breakage.

## MOUNTING: A minimum 14,500 Lb. GVWR recommended.

Four 0.75" x 3.0" long Grade 8 hex head cap screws and lock nuts are supplied for mounting. Hole pattern is 12" square. Mounting base is 15" square.

## ACCESSORIES:

An optional outrigger is needed for stability requirements of OSHA 1910.180. The outrigger is necessary to reduce the load on the crane's rotation assembly and the truck's suspension. A boom rest is needed to support the boom while in transit. Liftmoore can supply either of these options.



HOUSTON, TEXAS  
 FAX: (800) 824-5559 (USA & Canada)  
 FAX: (713) 688-6324  
 PHONE: (713) 688-5533  
[www.liftmoore.com](http://www.liftmoore.com)

# LIFTMOORE 2550 CRANE

25,000 FT. LB. MOMENT RATING  
5,000 LB. MAXIMUM CAPACITY

Liftmoore's 2550 all hydraulic powered crane is the crane for your extended duty requirements. This model is designed for applications requiring longer duty cycles such as loading or unloading and longer lifting operations. With its 25,000 Ft. Lb. moment rating and 5,000 Lb. maximum capacity at 5 Ft. the 2550 provides the needed capacity for most field service applications.

360 degree continuous and unlimited rotation is standard on the 2550. Rotation is through a 45:1 ratio worm gear reducer driving a gear bearing slewing ring

- **2550X-20** Power extension from 10 Ft to 16 Ft with a manual pull out to 20 Ft.
- **2550XP 12-20** Full power extension from 12 Ft to 20 Ft. with wireless Proportional controls standard



**Model 2550X**

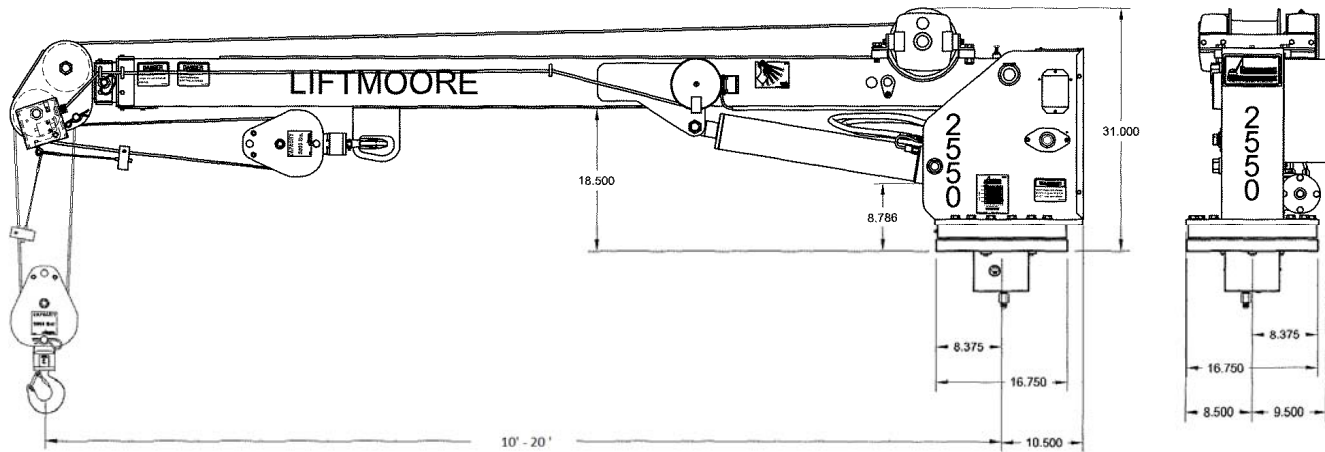
LOAD CAPACITY - LBS.		25,000 FT-LBS					
BOOM LENGTH - FT.		0°	15°	30°	45°	60°	75°
10	—	2500	2588	2887	3536	5000	5000
12	—	2083	2157	2406	2946	4167	5000
14	—	1786	1849	2062	2525	3571	5000
16	—	1563	1618	1804	2210	3125	5000
18	—	1389	1438	1604	1964	2778	5000
20	—	1250	1294	1443	1768	2500	4830



HOUSTON, TEXAS  
 FAX: (800) 824-5559 (USA & Canada)  
 FAX: (713) 688-6324  
 PHONE: (713) 688-5533  
 www.liftmoore.com

**LIFTMOORE**  
 713-688-5533  
 WWW.LIFTMOORE.COM

# 2550 SPECIFICATIONS



## MOMENT RATING:

25,000 Ft.-Lbs.

## HOIST WINCH:

The winch is a worm gear design with 38:1 gear ratio. A multiple disk safety brake is installed on the worm shaft that incorporates a one way clutch that releases on winch up. The winch is powered by a low speed, high torque hydraulic motor. Single line no load speed of the winch is 20 ft. per minute at 6 GPM. Ratio between winch drum and wire rope meets ANSI B30.5 requirements.

** 5000 Lbs. @ 5 ft.	1562 Lbs. @ 16 ft.
** 3125 Lbs. @ 8 ft.	1388 Lbs. @ 18 ft.
2500 Lbs. @ 10 ft.	1250 Lbs. @ 20 ft.
2083 Lbs. @ 12 ft.	

\*\* Two part line required for loads above 3000 Lbs.

## WIRE ROPE and SHEAVES:

The crane is supplied with 80 Ft. of 5/16 in. galvanized aircraft cable. Minimum breaking strength of the rope is 9,800 lbs. The wire rope is outside of the boom and visible for operators continual inspection. A 3-ton capacity thrust bearing swivel-traveling block for easy two-part hookup is included. All sheaves meet ANSI requirements.

## BOOM:

The boom is capable of moving from -5 to +75 Degrees, elevated by a 4.00 in. bore double acting cylinder. The cylinder has an integral counterbalance valve with relief set at 2500 PSI. The counter balance valve will hold the cylinder in the event of hose failure and it controls the rate of boom decent.

Two Standard Booms as listed below

### Model 2550X-20:

The boom extends under power from 10 Ft. to 16 Ft. and manually from 16 Ft. to 20 Ft. with one intermediate position at 18 Ft.

### Model 2550XP 12-20:

The boom extends under power from 12 Ft. to 20 Ft. Includes wireless Proportional controls as standard.

## HYDRAULIC SYSTEM:

For smooth operation and minimum heat buildup a pressure compensated flow control system is used. The system will not build up pressure above the level required to operate a function. This reduces the heat buildup in the oil and the power required from the engine. Valves are in a series control circuit.

## ROTATION SYSTEM:

Rotation is unlimited on a gear bearing with an internal gear driven by a worm gearbox. The worm gearbox ratio is 45:1 and it is driven by a low speed, high torque hydraulic motor.

## CONTROLS:

**2550X-20:** A 25-Ft. long remote pendant is provided for control of each powered function. The pendant control is removable from the crane to prevent unauthorized use of the crane.

**2550XP 12-20** is supplied with wireless proportional controls, allowing for precise handling of the load as the operator has control of the function's speed through a trigger switch mounted in the wireless transmitter.

## LOAD SENSOR

A load-limiting sensor is installed in the elevation cylinder. This sensor will shut down hoist up, boom out and boom down when an overload is detected. The sensor will reset after the load is lowered.

## ELECTRICAL:

The 2550 crane's powered functions are all controlled by 12V DC. electric solenoid valves. 25Ft. of 10 gauge wire and a 15 Amp fuse are included.

## ANTI TWO-BLOCK:

The anti two-block is standard on this crane and prevents extending the boom against the travel block with possible breakage of the cable

## MOUNTING: A minimum 14,500 Lb. GVWR recommended.

Four 7/8" Grade 8 bolts are required. Bolts are not furnished. Mounting plate is 16-3/4" square with a 14-3/4" square bolt pattern.

## ACCESSORIES:

An outrigger is needed for stability requirements of OSHA 1910.180. The outrigger is necessary to reduce the load on the crane's rotation assembly and the truck's suspension. A Boom rest is also required. Liftmoore offers both as options.



HOUSTON, TEXAS  
 FAX: (800) 824-5559 (USA & Canada)  
 FAX: (713) 688-6324  
 PHONE: (713) 688-5533  
 www.liftmoore.com

# LIFTMOORE 3055DXP

**30,000 FT.- LB. MOMENT RATING**  
**5,500 LB. MAXIMUM CAPACITY**

The Liftmoore 3055 is the ideal midsized crane for those wanting full hydraulic extension plus the efficient planetary winch.

Unlimited power rotation is standard. Rotation is powered through a 45:1 ratio worm gearbox with a bronze worn gear for positive locking and smoothest operation. The crane rotates on a gear bearing slewing ring.

Wireless FM Radio Proportional Controls are standard, complete with "Tethered CAN Wire"

Full Power Extension from 10' to 20'

**Power Extension from 10' to 20'**

**Anti Two-Block**

**3/8" Galvanized Aircraft Wire Rope**

**Travel Block w/ Swivel hook**

**Planetary Gear Winch**

**Hydraulic Boom Elevation**

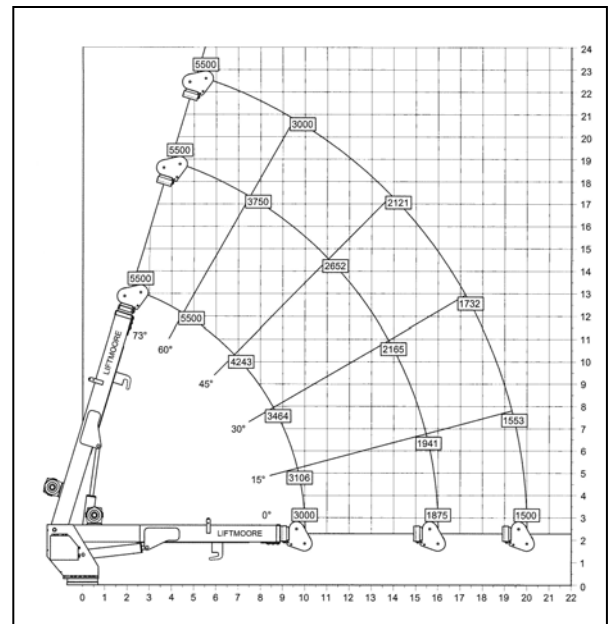
**Model 3055XP-20**

**Proportional Controls**



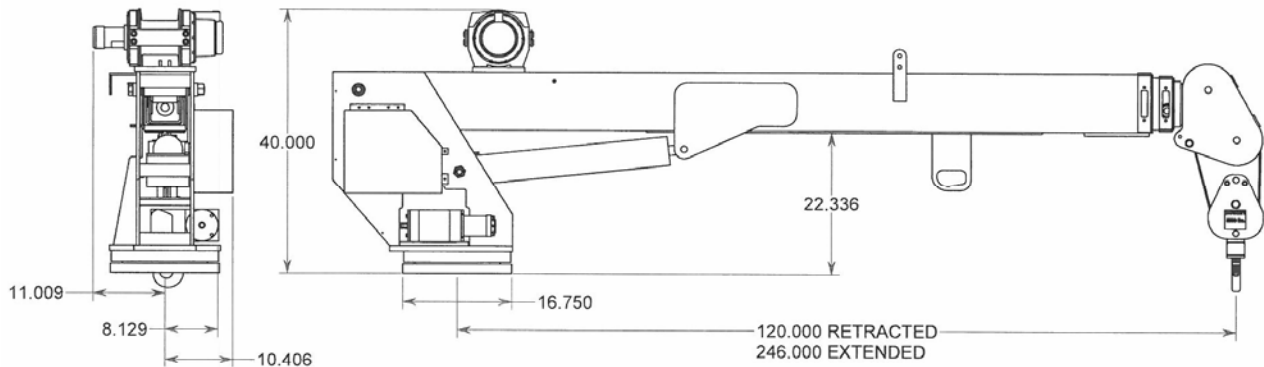
**Wireless Radio Controls Standard**

**Unlimited Power Rotation**



HOUSTON, TEXAS  
 FAX: (800) 824-5559 (USA & Canada)  
 FAX: (713) 688-6324  
 PHONE: (713) 688-5533  
 www.liftmoore.com

# 3055DXP - SPECIFICATIONS



**CAPACITY:** Moment rating of 30,000 ft.-lbs. with lift capacities as follows.

** 5500 Lbs. @ 5.5 ft.	1875 Lbs. @ 16 ft.
** 3750 Lbs. @ 8 ft.	1666 Lbs. @ 18 ft.
** 3000 Lbs. @ 10 ft.	1500 Lbs. @ 20 ft.
2500 Lbs. @ 12 ft.	

\*\* Two part line required for loads above 2,500 lbs.

**HOIST WINCH:** The hoist winch is planetary gear design with a 3,000 lb. bare drum capacity. The winch is powered by a low speed, high torque hydraulic motor. Single line no load speed of the winch is 40 ft. per minute at 8 GPM. Ratio between winch drum and wire rope meets ANSI B30.5 requirements.

**WIRE ROPE and SHEAVES:** The crane is supplied with 95 Ft. of 3/8 in. galvanized aircraft wire rope. Minimum breaking strength of the rope is 14,400 lbs. The wire rope is outside of the boom and visible for operators continual inspection. A 3-ton capacity thrust bearing swivel hook and traveling block for easy two-part hookup is included. All sheaves meet ANSI requirements.

**HYDRAULIC SYSTEM:** All crane functions are hydraulically powered by an externally (engine) driven hydraulic pump. PTO, Pump, Reservoir and Hoses are not supplied with crane. Flow and Pressure requirements are 8 GPM and 2750 PSI. A proportional hydraulic valve in the manifold controls the crane's speed. All directional control valves are incorporated in a single manifold. A pressure compensated flow control system is used. This system allows excess flow to be dumped at the pressure required by the operating function. This reduces heat build up in the hydraulic oil.

**BOOM ELEVATION:** The boom is capable of operating from -5 to + 75 degrees. A double acting cylinder elevates the boom. The cylinder has an integral counterbalance valve. The counterbalance valve has three safety purposes. It will hold the cylinder in the event of hose failure, it controls the rate of boom descent and it functions as a relief valve. The cylinder rod is chrome plated and poly seals are used in the cylinder for best possible load holding capability.

**BOOM EXTENSION:** Extends under hydraulic power from 10 to 20 feet. Two Hydraulic cylinders with an integral counterbalance valve extend the boom throughout its 10-foot extension.

**ROTATION SYSTEM:** Unlimited rotation is delivered on a gear bearing with an internal gear driven by a worm gearbox. The worm gearbox ratio is 45:1 and it is driven by a low speed, high torque hydraulic motor.

**CONTROLS:** Supplied with wireless proportional controls, Allowing for precise handling of the load as the operator has control of the function's speed through a trigger switch mounted in the wireless transmitter. Supplied with C.A.N tethering cable

**LOAD SENSOR** A load sensor is included as standard equipment. The sensor is set to limit overloads when using hoist up, boom extend out & boom down. Boom up is limited by the systems hydraulic pressure setting. When an overload is detected the load can be lowered to reset the overload sensor.

**ANTI TWO-BLOCK:** The anti two-block is standard on this crane and prevents extending the boom against the travel block with possible breakage of the cable

**ELECTRICAL:** The 3055 crane's functions are controlled by 12V DC electric solenoid valves. 25 Ft. of 10 gauge wire and a 15 Amp fuse are included.

**MOUNTING: A minimum 17,500 Lb. GVWR recommended.** Four 7/8" Grade 8 bolts are required. Bolts are not furnished. Mounting plate is 16-3/4" square with a 14-3/4" square bolt Patten.

**ACCESSORIES:** An outrigger is needed for stability requirements of OSHA 1910.180. The outrigger is necessary to reduce the load on the crane's rotation mechanism and the truck's suspension. A Boom rest is also required. Liftmoore offers both as options.



HOUSTON, TEXAS  
 FAX: (800) 824-5559 (USA & Canada)  
 FAX: (713) 688-6324  
 PHONE: (713) 688-5533  
 www.liftmoore.com



# LIFTMOORE 3660 CRANE

36,000 FT.-LB. MOMENT RATING  
6,000 LB. MAXIMUM CAPACITY

Liftmoore's 3660 hydraulic powered crane is the crane for your extended duty requirements. This model is designed for applications requiring longer duty cycles such as loading or unloading and longer lifting operations. With its 36,000 Ft. Lb. moment rating and 6,000 Lb. maximum capacity at 6 Ft. the 3660 provides the needed capacity for most field service applications.

360 degree continuous and unlimited rotation is standard on the 3660. Rotation is through a 45:1 ratio worm gear reducer driving a gear bearing slewing ring

- **3660X-20** Power extension from 10 Ft to 16 Ft with a manual pull out to 20 Ft.
- **3660XP-20** Power extension from 10 Ft to 16 Ft. with a manual pull out to 20 Ft., Wireless proportional controls standard.



Pressure Compensated  
Flow Control

ANSI Rated  
Worm Gear Winch

Rotates on Gear  
Bearing Slewing Ring

Worm Gear Rotation

Model 3660X-20

## LOAD CAPACITY - LBS. 36,000 FT-LBS

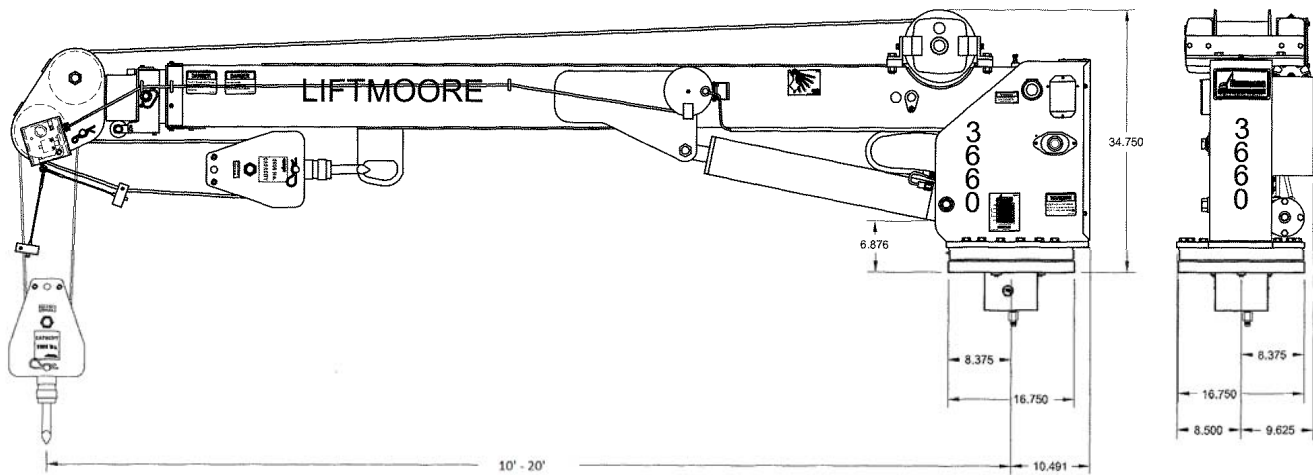
BOOM LENGTH - FT.	LOAD CAPACITY - LBS.					
	0°	15°	30°	45°	60°	75°
10	3600	3730	4160	5090	6000	6000
12	3000	3105	3465	4245	6000	6000
14	2570	2660	2970	3635	5145	6000
16	2250	2330	2600	3180	4500	6000
18	2000	2070	2310	2830	4000	6000
20	1800	1865	2080	2545	3600	6000



HOUSTON, TEXAS  
FAX: (800) 824-5559 (USA & Canada)  
FAX: (713) 688-6324  
PHONE: (713) 688-5533  
www.liftmoore.com



# 3660 SPECIFICATIONS



## MOMENT RATING:

36,000 Ft.-Lbs.

## HOIST WINCH:

The hoist winch is a worm gear design with 38:1 gear ratio. A multiple disk safety brake is installed on the worm shaft that incorporates a one way clutch that releases on winch up. The winch is powered by a low speed, high torque hydraulic motor. Single line no load speed of the winch is 20 ft. per minute at 6 GPM. Ratio between winch drum and wire rope meets ANSI B30.5 requirements.

** 6000 Lbs. @ 6 ft.	2250 Lbs. @ 16 ft.
** 4500 Lbs. @ 8 ft.	2000 Lbs. @ 18 ft.
3000 Lbs. @ 12 ft.	1800 Lbs. @ 20 ft.

\*\* Two part line required for loads above 3000Lbs.

## WIRE ROPE and SHEAVES:

The crane is supplied with 95 Ft. of 3/8 in. galvanized aircraft cable. Minimum breaking strength of the rope is 14,400 lbs. The wire rope is outside of the boom and visible for operators continual inspection. A 3-ton capacity thrust bearing swivel hook and traveling block for easy two-part hookup is included. All sheaves meet ANSI requirements.

## BOOM:

The boom is capable of moving from -5 to +75 Degrees. It is elevated by a 4.50 In. bore double acting cylinder. The cylinder has an integral counterbalance valve with relief set at 2750 Psi. The counter balance valve will hold the cylinder in the event of hose failure and it controls the rate of boom decent.

Two Standard Booms as listed below:

### Model 3660X-20:

The boom extends under power from 10 Ft. to 16 Ft. with a 4-Ft manual pull out to 20 Ft. with one intermediate position at 18 Ft.

### Model 3660XP-20:

The boom extends under power from 10 Ft. to 16 Ft with a 4 Ft manual pull out to 20 Ft. Includes wireless proportional controls as standard.

## HYDRAULIC SYSTEM:

For smooth operation and minimum heat buildup a pressure compensated flow control system is used. The system will not build up pressure above the level required to operate a function. This reduces the heat buildup in the oil and the power required from the engine. A series control circuit is used.

## ROTATION SYSTEM:

Rotation is 360 degrees continuous and unlimited on a gear bearing with an internal gear driven by a worm gearbox. The worm gearbox ratio is 45:1 and it is driven by a low speed, high torque hydraulic motor.

## CONTROLS:

**3660X-20:** A 25-Ft. long remote pendant is provided for control of each powered function. The pendant control is removable from the crane to prevent unauthorized use of the crane.

**3660XP-20:** is supplied with wireless proportional controls, allowing for precise handling of the load as the operator has control of the function's speed through a trigger switch mounted in the wireless transmitter.

## LOAD SENSOR

A load-limiting sensor is installed in the elevation cylinder. This sensor will shut down hoist up, boom out & boom down when an overload is detected. The sensor will rest after the load is lowered.

## ELECTRICAL:

The 3660 crane's functions are controlled by 12V DC electric solenoid valves. 25 Ft. of 10 gauge wire and a 15 Amp fuse are included.

## ANTI TWO-BLOCK:

The anti two-block is standard on this crane and prevents extending the boom against the travel block with possible breakage of the cable

## MOUNTING: A minimum 17,500 Lb. GVWR recommended.

Four 7/8" Grade 8 bolts are required. Bolts are not furnished. Mounting plate is 16-3/4" square with a 14-3/4" square bolt Patten.

## ACCESSORIES:

An outrigger is needed for stability requirements of OSHA 1910.180. The outrigger is necessary to reduce the load on the crane's rotation mechanism and the truck's suspension. A Boom rest is also required. Liftmoore offers both as options.



HOUSTON, TEXAS  
 FAX: (800) 824-5559 (USA & Canada)  
 FAX: (713) 688-6324  
 PHONE: (713) 688-5533  
 www.liftmoore.com

# LIFTMOORE 4064 CRANE

40,000 FT.-LB. MOMENT RATING  
6,400 LB. MAXIMUM CAPACITY

- Power Extension to 22 FT.
- Wireless or Wired Control
- Planetary Gear Winch
- Unlimited Rotation
- External Gear Bearing
- Worm Gear Rotation
- Rectangular Boom
- 4064XP-22 Full Power extension from 10 Ft. to 22 Ft.
- 4064XP-30 Full Power extension from 14 Ft. to 30 Ft.



Power Boom Extension

Anti Two-Block

95 ft of 3/8" GAC

Travel Block with Swivel Hook & Safety Latch

Planetary Gear Winch

Power Boom Elevation

Model 4064XP

Available with Either  
Wired or Wireless  
Controls

Rotates on Gear  
Bearing Slewing

Worm Gear Rotation

## LOAD CAPACITY - LBS. 40,000 FT-LBS

BOOM LENGTH - FT.	0°	15°	30°	45°	60°	75°
10	4000	4141	4619	5657	6400	6400
12	3333	3451	3849	4714	6400	6400
14	2857	2958	3299	4041	5714	6400
16	2500	2588	2887	3536	5000	6400
18	2222	2301	2566	3143	4444	6400
20	2000	2071	2309	2828	4000	6400
22	1818	1882	2099	2571	3636	6400

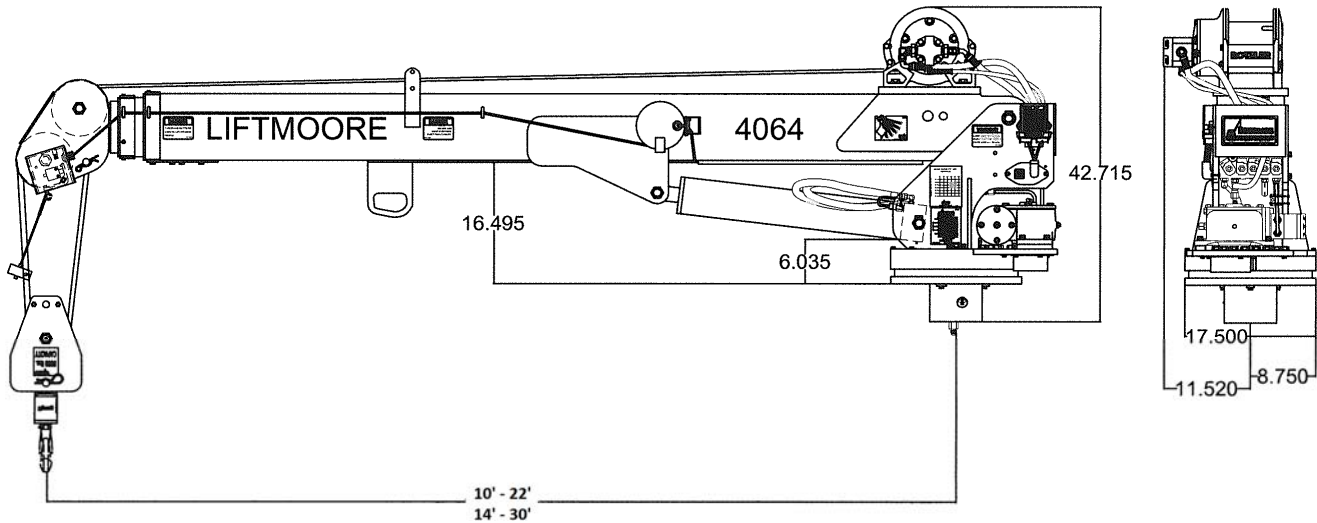


HOUSTON, TEXAS  
FAX: (800) 824-5559 (USA & Canada)  
FAX: (713) 688-6324  
PHONE: (713) 688-5533  
www.liftmoore.com

  
713-688-5533  
WWW.LIFTMOORE.COM

22377

# 4064 SPECIFICATIONS



**CAPACITY:** Moment rating of 40,000 ft.-lbs. with lift capacities as follows.

- 6400 lbs. @ 6.2 ft.\*
- 4000 lbs. @ 10 ft. \*
- 2660 lbs. @ 15 ft.
- 2000 lbs. @ 20 ft.
- 1818 lbs. @ 22 ft.

\* Requires use of travel block double line for loads above 3,000 lbs.

**HOIST WINCH:** The hoist winch is a planetary gear design with a 4,200 lb. single line, bare drum capacity. Ratio between winch drum and wire rope meets ANSI B30.5 requirements. A gear type hydraulic motor powers the winch. No load line speed is 45 FPM @ 6 GPM. A spring applied, pressure released brake system is used for holding and lowering loads. A one way clutch releases the brake during hoisting.

**WIRE ROPE and SHEAVES:** The crane is supplied with 95 Ft. of 3/8 in. galvanized aircraft cable. Minimum breaking strength of the rope is 14,400 lbs. The wire rope is outside of the boom and visible for operators continual inspection. A 3-ton capacity hook with a thrust bearing swivel, traveling block for easy two-part rigging is included. Sheaves are a non-metallic material for improved life of both the sheave and wire rope. All sheaves meet ANSI requirements.

**HYDRAULIC SYSTEM:** All crane functions are hydraulically powered by an externally (engine) driven hydraulic pump. PTO, Pump, Reservoir and Hoses are not supplied with crane. Flow and Pressure requirements are 8 GPM and 2750 PSI. A proportional hydraulic valve in the manifold controls the crane's speed. All directional control valves are incorporated in a single manifold. A pressure compensated flow control system is used. This system allows excess flow to be dumped at the pressure required by the operating function. This reduces heat build up in the hydraulic oil.

**ROTATION SYSTEM:**

Rotation is 360 degrees continuous and unlimited on a gear bearing with an external gear driven by a worm gearbox. The worm gearbox ratio is 45:1 and it is driven by a low speed, high torque hydraulic motor.

**CONTROL:** Either a standard wired control pendant or a wireless radio control can be supplied for controlling the crane. Either system provides a trigger for speed control. The radio transmitter includes a rechargeable battery system. The wireless control is supplied with a CAN wire system so that it can be used as a wired control. The transmitter can be charged with this cable. A 12VDC in cab charger is supplied.

**BOOM ELEVATION:** The boom is capable of operating from -5 to + 75 degrees. A double acting cylinder elevates the boom. The cylinder has an integral counterbalance valve. The counterbalance valve has three safety purposes. It will hold the cylinder in the event of hose failure, it controls the rate of boom descent and it functions as a relief valve. The cylinder rod is chrome plated and poly seals are used in the cylinder for best possible load holding capability.

**BOOM EXTENSION:**

**4064XP-22:** Extends under hydraulic power from 10 to 22 feet. Two Hydraulic cylinders with an integral counterbalance valve extend the boom throughout its 12-foot extension.

**4064XP-30:** Extends under hydraulic power from 14 to 30 feet. Two Hydraulic cylinders with an integral counterbalance valve extend the boom throughout its 16-foot extension

**ANTI TWO-BLOCK:**

The anti two-block is standard on this crane & prevents extending the boom against the travel block with possible breakage of the cable

**LOAD SENSOR:**

A load sensor is included as standard equipment. The sensor is set to limit overloads when using hoist up, boom extend out & boom down. Boom up is limited by the systems hydraulic pressure setting. When an overload is detected the load can be lowered to reset the overload sensor.

**MOUNTING: A minimum 19,500 Lb. GVWR recommended.**

Four 7/8" Grade 8 bolts are required. Bolts are not furnished. Mounting plate is 17.5" square with a 14-3/4" square bolt pattern.

**ACCESSORIES:**

An outrigger is needed for stability requirements of OSHA 1910.180. The outrigger is necessary to reduce the load on the crane's rotation mechanism and the truck's suspension. A Boom rest is also required. Liftmoore offers both as options.



HOUSTON, TEXAS  
 FAX: (800) 824-5559 (USA & Canada)  
 FAX: (713) 688-6324  
 PHONE: (713) 688-5533  
 www.liftmoore.com

# LIFTMOORE 5080 CRANE

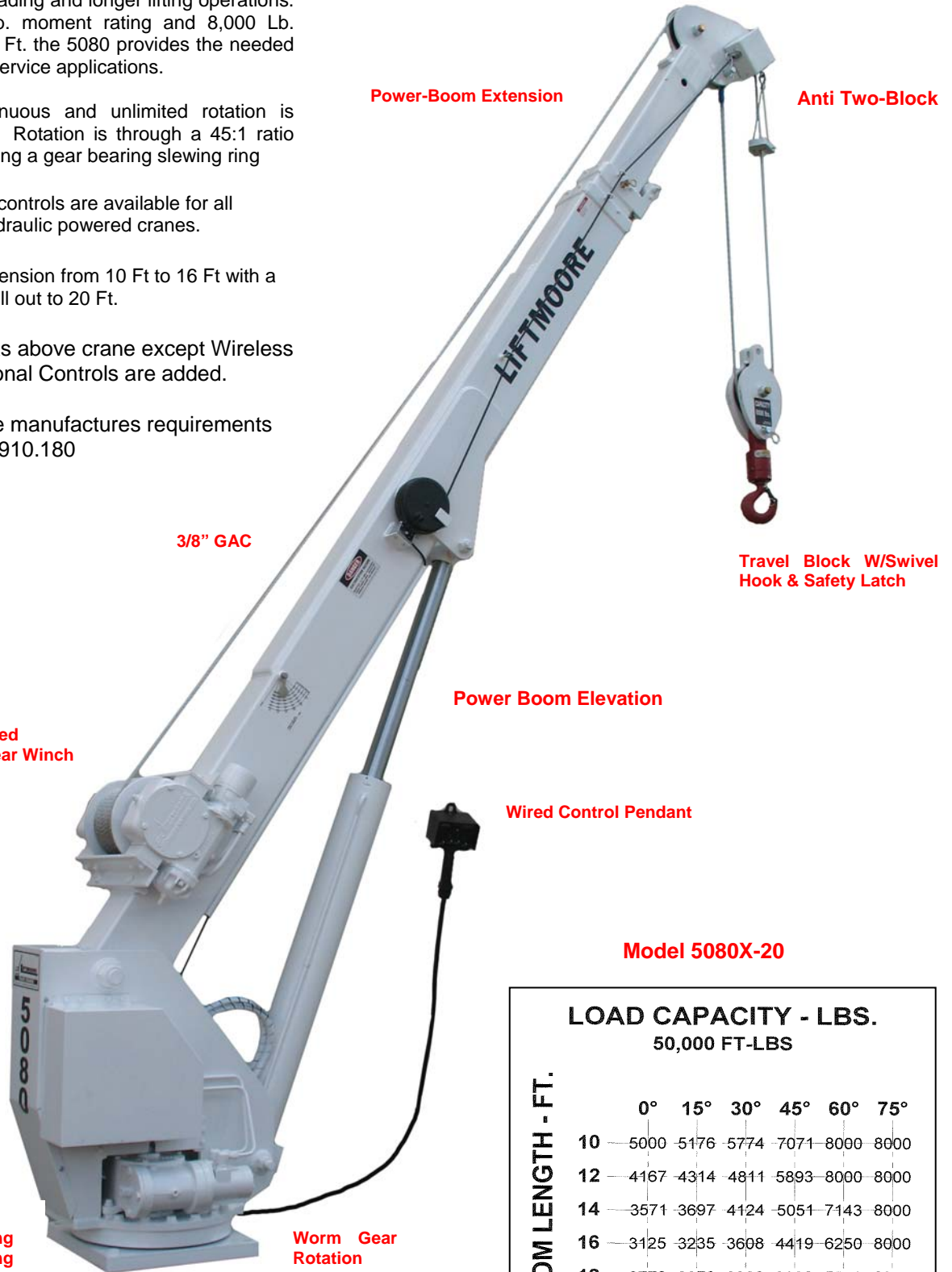
50,000 FT.-LB. MOMENT RATING  
8,000 LB. MAXIMUM CAPACITY

Liftmoore's 5080 all hydraulic powered crane is the crane for your extended duty requirements. This model is designed for applications requiring longer duty cycles such as loading or unloading and longer lifting operations. With its 50,000 Ft. Lb. moment rating and 8,000 Lb. maximum capacity at 6 Ft. the 5080 provides the needed capacity for most field service applications.

360 degrees of continuous and unlimited rotation is standard on the 5080. Rotation is through a 45:1 ratio worm gear reducer driving a gear bearing slewing ring

**Optional:** Proportional controls are available for all Liftmoore hydraulic powered cranes.

- **5080X-20** Power extension from 10 Ft to 16 Ft with a manual pull out to 20 Ft.
- **5080XP-20** Same as above crane except Wireless Proportional Controls are added.
- The 5080 meets the manufactures requirements of OSHA 29 CFR 1910.180



Pressure Compensated Flow Control

ANSI Rated Worm Gear Winch

Rotates on Gear Bearing Slewing Ring

Worm Gear Rotation



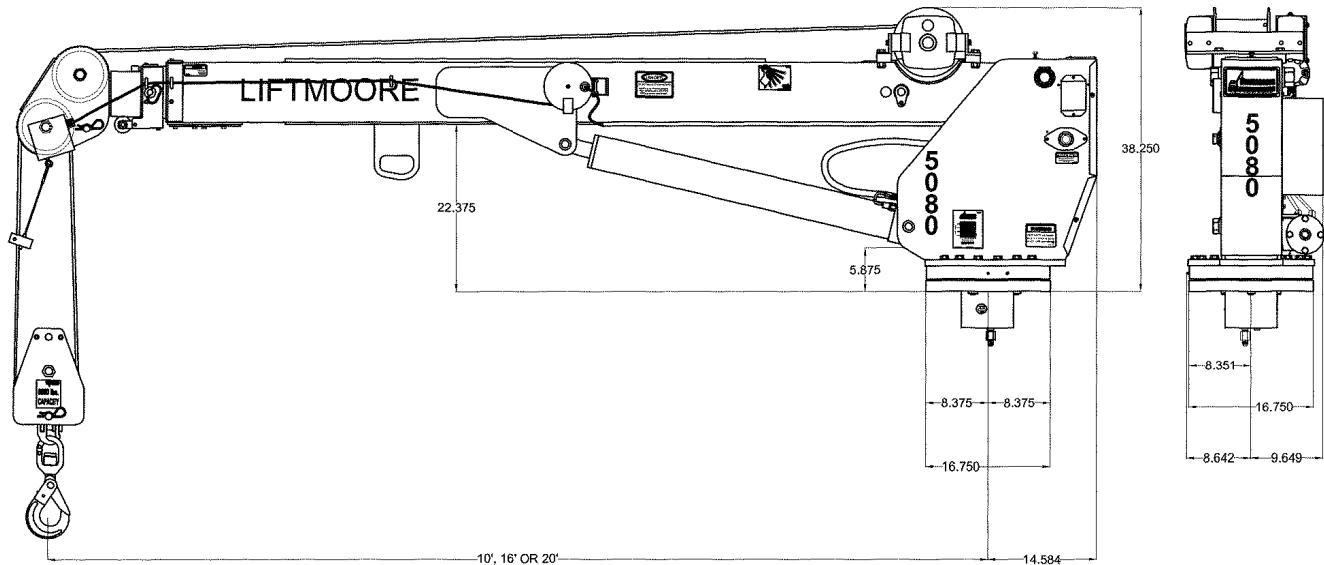
HOUSTON, TEXAS  
FAX: (800) 824-5559 (USA & Canada)  
FAX: (713) 688-6324  
PHONE: (713) 688-5533  
www.liftmoore.com

Model 5080X-20

LOAD CAPACITY - LBS.		50,000 FT.-LBS					
BOOM LENGTH - FT.							
	0°	15°	30°	45°	60°	75°	
10	5000	5176	5774	7071	8000	8000	
12	4167	4314	4811	5893	8000	8000	
14	3571	3697	4124	5051	7143	8000	
16	3125	3235	3608	4419	6250	8000	
18	2778	2876	3208	3928	5556	8000	
20	2500	2588	2887	3536	5000	8000	

  
713-688-5533  
WWW.LIFTMOORE.COM

# 5080 SPECIFICATIONS



## MOMENT RATING:

50,000 Ft.-Lbs.

## HOIST WINCH:

The hoist winch is a worm gear design with 38:1 gear ratio. A multiple disk safety brake is installed on the worm shaft that incorporates a one way clutch that releases on winch up. The winch is powered by a low speed, high torque hydraulic motor. Single line no load speed of the winch is 19 ft. per minute at 6 GPM. Ratio between winch drum and wire rope meets ANSI B30.5 requirements.

** 8000 Lbs. @ 6 ft.	3571 Lbs. @ 14 ft.
** 6250 Lbs. @ 8 ft.	3125 Lbs. @ 16 ft.
** 5000 Lbs. @ 10 ft.	2777 Lbs. @ 18 ft.
** 4166 Lbs. @ 12 ft.	2500 Lbs. @ 20 ft.

\*\* Two part line required for loads above 4000Lbs.

## WIRE ROPE and SHEAVES:

The crane is supplied with 95 Ft. of 3/8 in. galvanized aircraft cable. Minimum breaking strength of the rope is 14,400 lbs. The wire rope is outside of the boom and visible for operator's continual inspection. A 4-ton capacity hook with thrust bearing swivel traveling block for easy two-part hookup is included. All sheaves meet ANSI requirements.

## BOOM ELEVATION:

The boom is capable of moving from -5 to +75 Degrees. It is elevated by a 4.50 in. bore, double acting cylinder. The cylinder has an integral counterbalance valve with relief set at 2750 PSI. The counter balance valve will hold the cylinder in the event of hose failure and it controls the rate of boom descent.

## BOOM EXTENSION:

The boom is extended hydraulically from 10 Ft. to 16 Ft. by a 3" bore hydraulic cylinder and is extended manually from 16 ft. to 20 ft. with one intermediate position at 18 Ft. The extension cylinder is mounted inside the boom for protection and includes a counterbalance valve for holding the boom in case of hose failure. The power extendable portion of the boom slides on nylatron slide pads for minimum friction.

## HYDRAULIC SYSTEM:

For smooth operation and minimum heat buildup a pressure compensated flow control system is used. The system will not build up pressure above the level required to operate a function. This reduces the heat buildup in the oil and the power required from the engine. Directional control valves are mounted in a series circuit.

## ROTATION SYSTEM:

Rotation is 360 degrees continuous and unlimited on a gear bearing with an internal gear driven by a worm gearbox. The worm gearbox ratio is 45:1 and it is driven by a low speed, high torque hydraulic motor.

## CONTROLS:

**5080X-20:** A 25-Ft. long remote pendant is provided for control of each powered function. The pendant control is removable from the crane to prevent unauthorized use of the crane.

**5080XP-20:** Is supplied with wireless proportional controls, Allowing for precise handling of the load as the operator has control of each function's speed with a trigger switch mounted in the wireless transmitter.

## LOAD SENSOR

A load-limiting sensor is installed in the elevation cylinder. This sensor will shut down hoist up, boom out & boom down when an overload is detected. The sensor will reset after the load is lowered.

## ELECTRICAL:

The 5080 crane's powered functions are all controlled by 12V DC. electric solenoid valves. 25Ft. of 10 gauge wire and a 15 Amp fuse are included.

## ANTI TWO-BLOCK:

The anti two-block is standard on this crane and prevents extending the boom against the travel block with possible breakage of the cable

## MOUNTING: A minimum 20,000 Lb. GVWR recommended.

Four 1" Grade 8 bolts are required. Bolts are not furnished. Mounting plate is 16-3/4" square with a 14-3/4" square bolt pattern.

## ACCESSORIES:

An outrigger is needed for stability requirements of OSHA 1910.180. A Boom rest is also required. Liftmoore offers both as options.



HOUSTON, TEXAS  
 FAX: (800) 824-5559 (USA & Canada)  
 FAX: (713) 688-6324  
 PHONE: (713) 688-5533  
 www.liftmoore.com

# LIFTMOORE 72100 CRANE

72,000 FT.-LB. MOMENT RATING  
10,000 LB. MAXIMUM CAPACITY

Liftmoore's 72100 is the largest capacity crane we produce. Moment rating of the crane is 72,000 ft.-lbs. with a maximum lifting capacity of 10,000 lbs. at a 7.2 ft load radius.

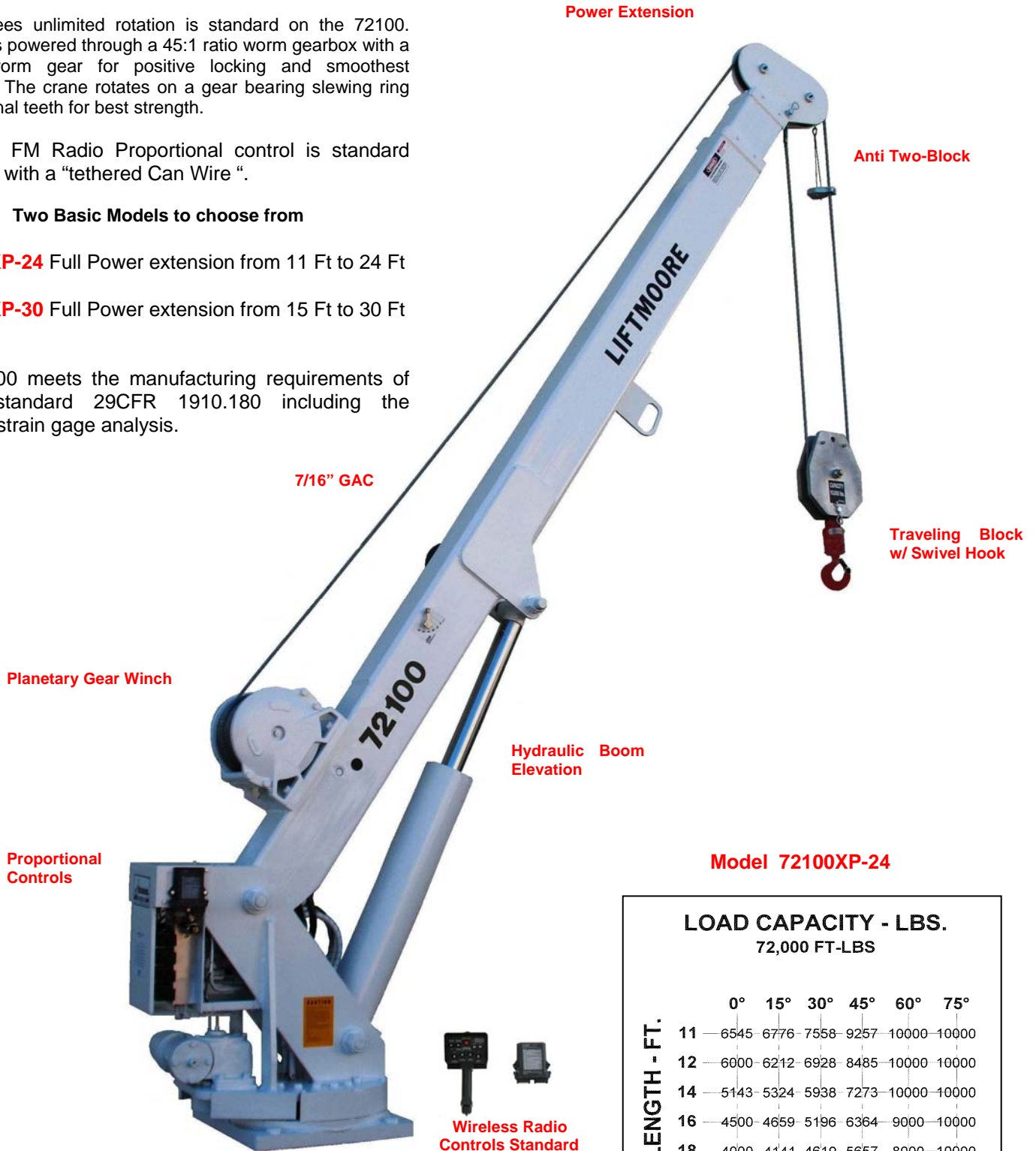
360 degrees unlimited rotation is standard on the 72100. Rotation is powered through a 45:1 ratio worm gearbox with a bronze worm gear for positive locking and smoothest operation. The crane rotates on a gear bearing slewing ring with external teeth for best strength.

Wireless FM Radio Proportional control is standard complete with a "tethered Can Wire".

## Two Basic Models to choose from

- **72100XP-24** Full Power extension from 11 Ft to 24 Ft
- **72100XP-30** Full Power extension from 15 Ft to 30 Ft

The 72100 meets the manufacturing requirements of OSHA standard 29CFR 1910.180 including the required strain gage analysis.



Model 72100XP-24

## LOAD CAPACITY - LBS. 72,000 FT.-LBS

	0°	15°	30°	45°	60°	75°
11	6545	6776	7558	9257	10000	10000
12	6000	6212	6928	8485	10000	10000
14	5143	5324	5938	7273	10000	10000
16	4500	4659	5196	6364	9000	10000
18	4000	4141	4619	5657	8000	10000
20	3600	3727	4157	5091	7200	10000
22	3273	3388	3779	4628	6545	10000
24	3000	3106	3464	4243	6000	10000



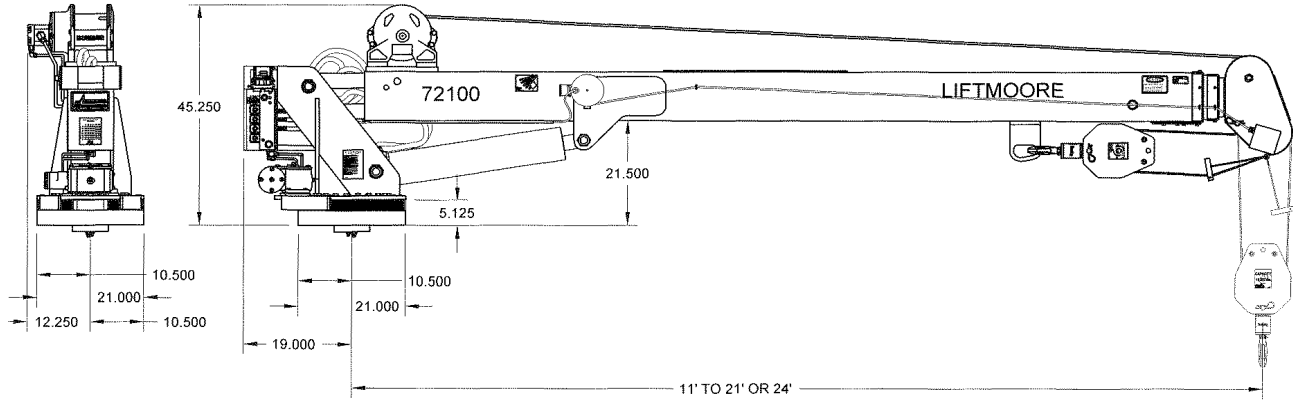
360° Unlimited Rotation,  
External Gear Bearing

HOUSTON, TEXAS  
FAX: (800) 824-5559 (USA & Canada)  
FAX: (713) 688-6324  
PHONE: (713) 688-5533  
www.liftmoore.com

Wireless Radio  
Controls Standard

  
713-688-5533  
WWW.LIFTMOORE.COM

# 72100 SPECIFICATIONS



## MOMENT RATING:

72,000 Ft.-Lbs.

## HOIST WINCH:

A planetary gear drive hoist is included. This is the most efficient method of powering the winch. Single line no load speed of the winch is 35 feet per minute with a 6 GPM flow rate. Winch drum to wire line ratio meets ANSI B30.5 requirements.

10,000 Lbs. @ 7.2 ft **	5,142 Lbs. @ 14 ft. **
7,200 Lbs. @ 10 ft. **	4,000 Lbs. @ 18 ft.
6,000 Lbs. @ 12 ft.	3,000 Lbs. @ 24 ft.

\*\* Two part line required for loads above 5000Lbs.

## WIRE ROPE and SHEAVES:

The crane is supplied with 100 Ft. of 7/16 In. galvanized aircraft cable. Minimum breaking strength of the rope is 17,600 lbs. The wire rope is outside of the boom and visible for operator's continual inspection. A 5-ton travel block for easy two-part hookup is included. The hook includes an easy turning roller thrust bearing. All sheaves meet ANSI requirements.

## BOOM:

The boom angle varies from -5 to +75 Degrees. Both the elevation and extension cylinders include an integrally mounted counterbalance valve for positive load holding. The boom extends on Nylatron slide pads for minimum friction.

**72100XP-24:** Power extension from 11 ft. to 24 ft. with a two stage Hydraulic cylinder.

**72100XP-30:** Power extension from 15 ft. to 30 ft. with a two stage Hydraulic cylinder.

## ROTATION:

A ball bearing slewing ring is used for crane rotation. The ring has an external gear for greatest possible strength. The rotation gearbox is powered by a low speed, high torque hydraulic motor, which drives the 13,000 In-Lb rated bronze worm gear box providing a smooth, safe rotation mechanism. The gearbox uses roller bearings on all shafts for the longest possible trouble free life. The crane rotates continuously and with out restriction

## RADIO REMOTE CONTROL:

FM radio remote control is standard equipment on the 72100. This digital control includes the proportional controller for hydraulic flow control and monitors the load sensor and anti two-block systems. Includes a system to reduce boom "bounce" during boom down operation. No mechanical relays are used with this control system. A battery charger is included.

## HYDRAULIC SYSTEM:

Proportional hydraulic control is standard on the 72100. The system provides variable speed control of all crane functions with the remote control. For smooth operation and minimum heat buildup a pressure compensated flow control system is used. A series control circuit is used so that more than one function will operate simultaneously until maximum pressure is reached.

## POWER SOURCE:

The crane requires both Hydraulic and 12 VDC electric power. Hydraulic flow and pressure requirements are 8 GPM and 2750 PSI. An on-off switch, fuse and 25 ft of 10 gauge wire are supplied for standard truck installation.

## ENGINE CONTROLS (OPTIONAL):

Engine start, stop and speed control can be included with the remote control. A separate receiver is used in conjunction with the FM controls so that unrestricted rotation is maintained. Truck must be equipped for remote operation

## LOAD SENSOR

A load-limiting sensor is installed in the elevation cylinder. This sensor will shut down hoist up, boom out & boom down when an overload is detected. The sensor will rest after the load is lowered.

## ANTI TWO-BLOCK:

The anti two-block is standard on this crane & prevents extending the boom against the travel block with possible breakage of the cable

## MOUNTING: A minimum 30,000 Lb. GVWR recommended.

Four 1-1/4" Grade 8 bolts are required. Bolts are not furnished. The crane mounts on a 21" square base plate with a 15.5 in. X 18.5 in. bolt pattern.

## ACCESSORIES:

An outrigger is needed for stability requirements of OSHA 1910.180. A boom rest is also required. Liftmoore offers both as options.



HOUSTON, TEXAS  
 FAX: (800) 824-5559 (USA & Canada)  
 FAX: (713) 688-6324  
 PHONE: (713) 688-5533  
 www.liftmoore.com

Bulletin 452-B 12/30/13



# LIFTMOORE 60100 CRANE

60,000 FT.-LB. MOMENT RATING  
10,000 LB. MAXIMUM CAPACITY

Liftmoore's 60100 is the second largest capacity crane we have produced. Moment rating of the crane is 60,000 ft.-lbs. with a maximum lifting capacity of 10,000 lbs. at a 6 ft load radius. The 60100 is an ideal crane for those needing a large crane yet not requiring the extra capacity of its big brother in the 72,000 ft-lb class of crane.

360 degrees unlimited rotation is standard on the 60100. Rotation is powered through a 45:1 ratio worm gearbox with a bronze worm gear for positive locking and smoothest operation. The crane rotates on a gear bearing slewing ring with external teeth for best strength.

Wireless FM Radio Proportional control is standard, complete with "tethered Can Wire "

- **60100XP-24** Full Power extension from 11 Ft to 24 Ft
- **60100XP-30** Full Power extension from 15 Ft to 30 Ft

The 60100 meets the manufacturing requirements of OSHA standard 29 CFR 1910.180 including the required strain gage analysis.

Power Extension

Anti Two-Block

7/16" GAC

Traveling Block w/ Swivel hook

Planetary Gear Winch

Hydraulic Boom Elevation

Model  
60100XP-24

Proportional Controls



Wireless Radio Controls Standard

360° Unlimited Rotation,  
External Gear Bearing

		LOAD CAPACITY - LBS. 60,000 FT-LBS					
		0°	15°	30°	45°	60°	75°
BOOM LENGTH - FT.	12	5000	5716	5774	7071	10000	10000
	14	4286	4437	4949	6061	8571	10000
	16	3750	3882	4330	5303	7500	10000
	18	3333	3451	3849	4714	6667	10000
	20	3000	3106	3464	4243	6000	10000
	22	2727	2823	3149	3857	5455	10000
24	2500	2588	2887	3536	5000	9659	



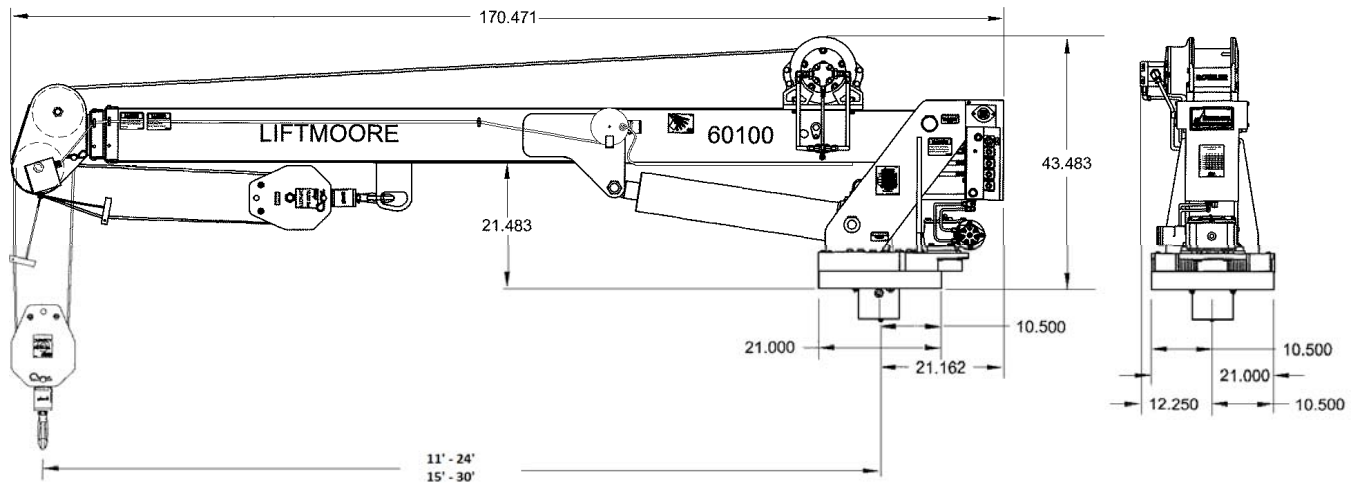
713-688-5533  
WWW.LIFTMOORE.COM

P/N 24067



HOUSTON, TEXAS  
FAX: (800) 824-5559 (USA & Canada)  
FAX: (713) 688-6324  
PHONE: (713) 688-5533  
www.liftmoore.com

# 60100 SPECIFICATIONS



## MOMENT RATING:

60,000 Ft.-Lbs.

## HOIST WINCH:

A planetary gear drive hoist is included. This is the most efficient method of hoisting the load. Single line no load speed of the winch is 35 feet per minute with a 6 GPM flow rate. Winch drum to wire line ratio meets ANSI B30.5 requirements.

10,000 Lbs. @ 6 ft.**	3,750 Lbs. @ 16 ft.
7,500 Lbs. @ 8 ft.**	3,333 Lbs. @ 18 ft.
6,000 Lbs. @ 10 ft.**	3,000 Lbs. @ 20 ft.
5,000 Lbs. @ 12 ft.	2,500 Lbs. @ 24 ft.

\*\* Two part line required for loads above 5000Lbs.

## WIRE ROPE and SHEAVES:

The crane is supplied with 100 Ft. of 7/16 in. galvanized aircraft cable. Minimum breaking strength of the rope is 17,600 lbs. The wire rope is outside of the boom and visible for operators continual inspection. A 5-ton travel block for easy two-part hookup is included. The hook includes a easy turning roller thrust bearing. All sheaves meet ANSI requirements.

## BOOM:

The boom angle varies from -5 to +75 Degrees. Both the elevation and extension cylinders include an integrally mounted counterbalance valve for positive load holding. The boom extends on Nylatron slide pads for minimum friction.

**60100XP-24:** Power extension from 11 ft to 24 ft with a two stage Hydraulic cylinder.

**60100XP-30:** Power extension from 15 ft. to 30 ft. with a two stage Hydraulic cylinder.

## ROTATION:

A ball bearing slewing ring is used for crane rotation. The ring has an external gear for greatest possible strength. The rotation gearbox is powered by a low speed, high torque hydraulic motor, which drives the 13,000 In-Lb rated bronze worm gear box providing a smooth, safe rotation mechanism. The gearbox uses roller bearings on all shafts for the longest possible trouble free life. The crane rotation is unlimited.

## RADIO REMOTE CONTROL:

FM radio remote control is standard equipment on the 60100. This digital flow control includes the proportional controller for hydraulic flow and monitors the load sensor and anti two-block systems. It includes a system to reduce boom "bounce" during boom down operation. No mechanical relays are used with this control system. A battery charger is included.

## HYDRAULIC SYSTEM:

Proportional hydraulic control is standard on the 60100. The system provides variable speed control of all crane functions with the remote control. For smooth operation and minimum heat buildup a pressure compensated flow control system is used. A series control circuit is used so that more than one function will operate simultaneously until maximum pressure is reached.

## POWER SOURCE:

The crane requires both Hydraulic and 12 VDC electric power. Hydraulic flow and pressure requirements are 8 GPM and 2750 PSI. An on-off switch, fuse and 25 ft of 10 gauge wire are supplied for standard truck installation.

## ENGINE CONTROLS (OPTIONAL):

Engine start, stop and speed control can be included with the remote control. A separate receiver is used in conjunction with the FM controls so that unrestricted rotation is maintained. Truck must be equipped for remote operation

## LOAD SENSOR

A load-limiting sensor is installed in the elevation cylinder. This sensor will shut down hoist up, boom out & boom down when an overload is detected. The sensor will reset after the load is lowered.

## ANTI TWO-BLOCK:

The anti two-block is standard on this crane and prevents extending the boom against the travel block with possible breakage of the cable

## MOUNTING: A minimum 26,000 Lb. GVWR recommended.

Four 1-1/4" Grade 8 bolts are required. Bolts are not furnished. The crane mounts on a 21" square base plate with a 15.5 in. X 18.5 in. bolt pattern.

## ACCESSORIES:

An outrigger is needed for stability requirements of OSHA 1910.180. A Boom rest is also required. Liftmoore offers both as options.



HOUSTON, TEXAS  
 FAX: (800) 824-5559 (USA & Canada)  
 FAX: (713) 688-6324  
 PHONE: (713) 688-5533  
 www.liftmoore.com